

Protect Your Horse from Mosquitoes & Disease



Call Central Mass Mosquito Control and let us survey your property for mosquito larval sites. Mosquitoes need shallow, still water in order to complete their life cycle. We can check and treat these sites (if needed) with environmentally friendly products, reducing exposure to mosquitoes, WNV and EEE.

CALL US TODAY!!



Central Mass Mosquito Control Project
111 Otis St. Northborough, Mass. 01532
tel. (508) 393-3055 • fax (508) 393-8492
www.cmmcp.org

Protect Your Horse from Mosquitoes & Disease



Call Central Mass Mosquito Control and let us survey your property for mosquito larval sites. Mosquitoes need shallow, still water in order to complete their life cycle. We can check and treat these sites (if needed) with environmentally friendly products, reducing exposure to mosquitoes, WNV and EEE.

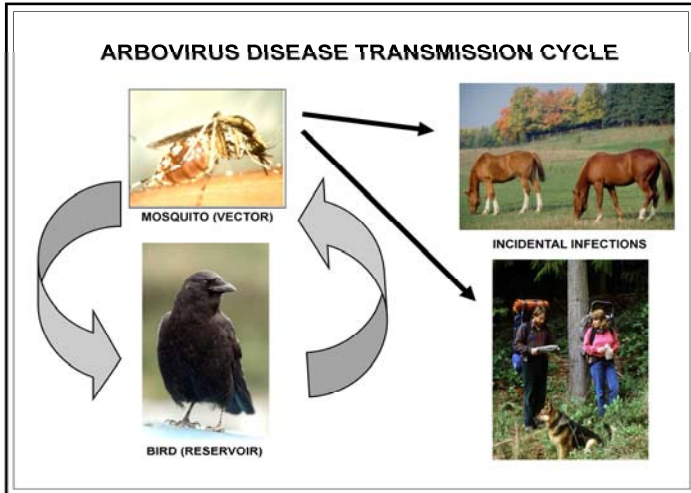
CALL US TODAY!!



Central Mass Mosquito Control Project
111 Otis St. Northborough, Mass. 01532
tel. (508) 393-3055 • fax (508) 393-8492
www.cmmcp.org

FACTS ABOUT WNV AND EEE

- ◆ Mosquitoes transmit WNV and EEE from birds to both humans and horses.
- ◆ Neither EEE or WNV can be passed from horse to human by contact with body fluids or any other physical mechanism.
- ◆ Horses can be vaccinated for both EEE and WNV - **please see your veterinarian.**
- ◆ There is no human vaccine currently available for WNV or EEE.



The best way to protect your horse from EEE or WNV is to have your horse vaccinated and to minimize exposure to mosquitoes.

HOW TO PROTECT YOUR HORSE FROM MOSQUITOES:

- ◆ Stable your horse during peak mosquito hours, dawn and dusk, and throughout the night if possible.
- ◆ Keep your stable dark at night; some mosquitoes are attracted to incandescent lights that glow yellow.
- ◆ Change water in water troughs & clean troughs weekly.
- ◆ If possible, remove all birds, including chickens, that are in close to the stable.
- ◆ Store wheelbarrows and empty buckets upside down.
- ◆ If you're in a high mosquito area, consider using topical treatments containing mosquito repellents labeled for horses. **Contact your veterinarian before use and be sure to follow all label directions.**
- ◆ Remove or cover old tires & drain tarps holding water.

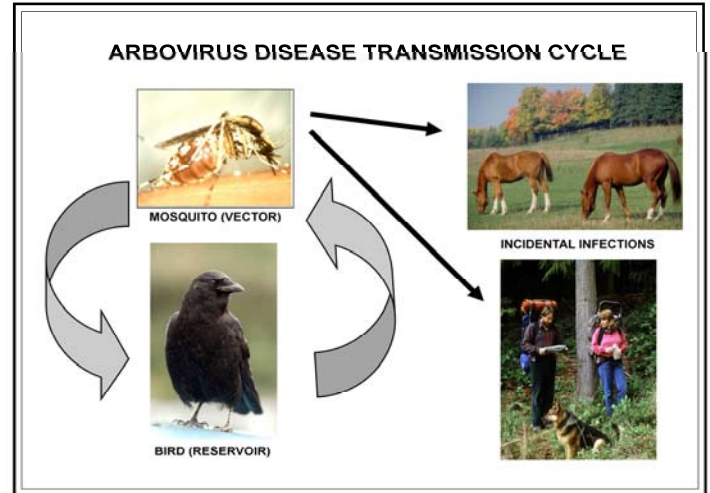
~ REMEMBER: MOSQUITOES NEED STILL WATER ~

FOR MORE INFORMATION:

Dept. of Agricultural Resources: (617) 626-1795
Dept. of Public Health - Viral Serology Lab: (617) 983-6396
www.mass.gov/dph - www.usda.gov - www.cdc.gov

FACTS ABOUT WNV AND EEE

- ◆ Mosquitoes transmit WNV and EEE from birds to both humans and horses.
- ◆ Neither EEE or WNV can be passed from horse to human by contact with body fluids or any other physical mechanism.
- ◆ Horses can be vaccinated for both EEE and WNV - **please see your veterinarian.**
- ◆ There is no human vaccine currently available for WNV or EEE.



The best way to protect your horse from EEE or WNV is to have your horse vaccinated and to minimize exposure to mosquitoes.

HOW TO PROTECT YOUR HORSE FROM MOSQUITOES:

- ◆ Stable your horse during peak mosquito hours, dawn and dusk, and throughout the night if possible.
- ◆ Keep your stable dark at night; some mosquitoes are attracted to incandescent lights that glow yellow.
- ◆ Change water in water troughs & clean troughs weekly.
- ◆ If possible, remove all birds, including chickens, that are in close to the stable.
- ◆ Store wheelbarrows and empty buckets upside down.
- ◆ If you're in a high mosquito area, consider using topical treatments containing mosquito repellents labeled for horses. **Contact your veterinarian before use and be sure to follow all label directions.**
- ◆ Remove or cover old tires & drain tarps holding water.

~ REMEMBER: MOSQUITOES NEED STILL WATER ~

FOR MORE INFORMATION:

Dept. of Agricultural Resources: (617) 626-1795
Dept. of Public Health - Viral Serology Lab: (617) 983-6396
www.mass.gov/dph - www.usda.gov - www.cdc.gov