



RESOURCES

American Beekeeping Federation:
<http://www.abfnet.org/>

Grow Wise, Bee Smart:
<http://growwise.org/>

USDA Bee Watch:
<https://www.usda.gov/media/blog/2014/05/15/see-honeybees-work-usda-launches-beewatch>

US EPA: Protecting Bees:
<http://www2.epa.gov/pollinator-protection>

State Reclamation & Mosquito Control Board:
<http://www.mass.gov/eea/agencies/agr/pesticides/mosquito/>

**Please contact us for
more information**

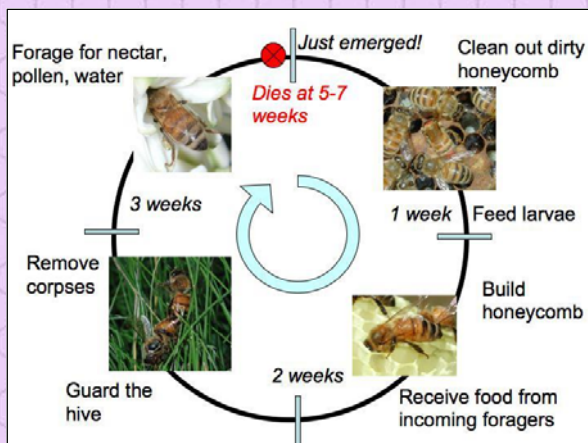


Central Mass Mosquito Control
111 Otis Street
Northborough, MA 01532
(508) 393-3055 • www.cmmcp.org



*Honeybees & mosquito
control in Central Mass.*
What's the buzz??

Honeybees are one of many important pollinators in our environment



Bees and other pollinators have a cooperative connection with plants. When bees collect pollen and nectar for food, they move pollen from one flower to another, maintaining the cycle of healthy plant reproduction.

CMMCP uses dilute, non-residual pyrethroids at low flow rates to control adult mosquitoes.

Spraying is done after sunset and when weather conditions permit.

We keep a listing of beekeepers and geocode them on GPS units in all spray trucks. Sprayers are shut down when approaching listed beehives.

For more information to register as an exclusion property please check <http://www.cmmcp.org/exclusion.htm>.



Environmental testing done in 2010 and 2012 by several state agencies including Agriculture, Public Health and Environmental Protection did not find any residues of sumithrin after aerial spraying. Beehive monitoring did not show any negative effects from these applications.

We are committed to providing mosquito control services to protect public health as part of an Integrated Pest Management (IPM) program.