

## 5). PUBLIC EDUCATION

Educating the public about mosquitoes and their biology is an important aspect of our program. We offer a comprehensive program geared towards school-aged children. The Project produces educational materials, and all member Town Halls, Libraries, etc. are stocked with this information. We have a special program geared specifically towards senior citizens, an at-risk population for mosquito-borne viruses. We also display at Health Fairs and other community organized events.

<http://www.cmmcp.org/public-education>

## 6). RESEARCH AND EFFICACY

While CMMCP is an agency charged with the control of mosquitoes, we strive to check for efficacy of our products and techniques, and perform research in new areas of control. Past areas of study have included: Mosquito Resistance to Pesticides; Spray Program Efficacy; Yearly Resident Satisfaction Survey, Host Seeking Activities of Mosquitoes in Central Mass., and many others.

<http://www.cmmcp.org/research-efficacy>

## 7). SOURCE REDUCTION

We have a curbside tire collection and recycling program for residents to eliminate this larval mosquito habitat from the environment. We also coordinate with communities in Earth Day cleanups, hazardous waste day events, etc.

<http://www.cmmcp.org/tire-collection-program>

## 8). BEAVER MITIGATION

Installation of water level control device and other procedures. This program is available subject to current local, state and federal regulations, and some limitations apply. For more information please check:

<http://www.cmmcp.org/beaver-mitigation-program>

MEMBERSHIP IN CMMCP OFFERS RESIDENTS ACCESS TO A FULL PROGRAM OF MOSQUITO CONTROL. CMMCP HAS MADE GREAT STRIDES OVER THE YEARS TO REDUCE DEPENDENCY ON SPRAYING BY PLACING GREATER EMPHASIS ON LARVAL CONTROL, PUBLIC EDUCATION, DITCH MAINTENANCE AND SOURCE REDUCTION. SPRAYING IS DONE ONLY AFTER REQUEST BY A PROPERTY OWNER. IF MOSQUITO-BORNE VIRUSES ARE IDENTIFIED, SPRAYING IS DONE IF LOCAL AND STATE OFFICIALS ARE CONSULTED AND IT HAS BEEN DETERMINED THAT SPRAYING IS AN APPROPRIATE RESPONSE.

RESIDENTS MAY EXCLUDE THEIR PROPERTY FROM ANY PART OF OUR PROGRAM AT ANY TIME.

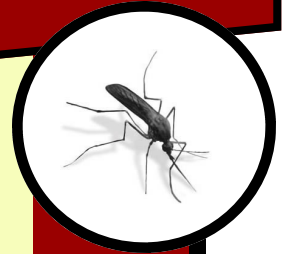
FOR MORE INFORMATION PLEASE GO TO

**[WWW.CMMCP.ORG](http://WWW.CMMCP.ORG)**



**MEMBERSHIP IN  
THE**

***CENTRAL MASS.  
MOSQUITO  
CONTROL PROJECT***



**WHAT SERVICES  
ARE AVAILABLE ?**

**CENTRAL MASS MOSQUITO CONTROL PROJECT  
111 OTIS STREET  
NORTHBOROUGH, MA 01532  
(508) 393-3055  
[www.cmmcp.org](http://www.cmmcp.org)**

## MEMBERSHIP IN CMMCP - WHAT SERVICES ARE AVAILABLE?

CMMCP is a Massachusetts state agency that operates under the State Reclamation & Mosquito Control Board, an agency in the Dept. of Agricultural Resources. We work closely with several other state agencies, most notably the Dept. of Public Health and the Dept. of Environmental Protection. Membership in CMMCP allows a full program of mosquito control to be accessed by residents and town officials. The annual cost of membership is determined by the Dept. of Revenue and is a



*Mosquito larvae*

factor of the equalized evaluations and the total land area of each town. This amount is withheld from the local aid package sent out by the State each year and placed into our budget.

We were formed in 1973 and currently provide service to 44 member cities and towns in both Worcester and Middlesex counties. We employ 22 full time staff and hire up to 10 seasonal staff each summer to work in our surveillance department and assist in other areas such as

research, source reduction, larval control and ditch maintenance. We operate out of a newly renovated, state-of-the-art facility in Northborough, and we are the largest mosquito control project in the state covering over 810 square miles. We constantly strive to offer the latest advances and procedures in mosquito control operations. Our website at <https://www.cmmcp.org> has detailed information on our program. For more information please call our office at (508) 393-3055 during business hours or e-mail us anytime at [cmmcp@cmmcp.org](mailto:cmmcp@cmmcp.org).

### MOSQUITO CONTROL SERVICES

We offer a full program of mosquito control which consists of 8 components: larval control; adult control; ditch maintenance; mosquito surveillance; public education; research and efficacy; source reduction (tire recycling) and beaver mitigation. Details of each program are outlined in this pamphlet.

#### 1). LARVAL MOSQUITO CONTROL

Wetlands and suspected mosquito larval sites are monitored by specially-trained technicians from March through September to determine the need for applications of environmentally sensitive products (typically Bti) to control the larval mosquito. By controlling mosquitoes in their larval stage the need for adult mosquito spraying is greatly reduced.

<http://www.cmmcp.org/larval-control-program>

#### 2). ADULT MOSQUITO CONTROL

Adult mosquito control (called adulticiding) is only done by REQUEST OF RESIDENTS & TOWN OFFICIALS, OR AS A RESPONSE TO VIRUS CONFIRMATIONS. If adult mosquito populations have reached established thresholds, GPS tracked, computer controlled truck-mounted sprayers are used to reduce the adult mosquito levels in targeted areas. The Project has worked diligently over the past 30 years to achieve the goal of reducing the dependency on adulticiding by increasing the emphasis on the other proactive services outlined in this pamphlet. If mosquito-borne viruses are identified, we work closely with local and state health officials to determine the appropriate response.

<http://www.cmmcp.org/adulticide-program>

#### 3). DITCH MAINTENANCE

CMMCP conducts maintenance on ditches to improve water

flow, cleans roadside culverts and man-made ponds to improve water quality, thereby restoring historic flow patterns and reducing the potential for larval mosquito habitat in these areas.

<http://www.cmmcp.org/ditch-maintenance-program>

#### 4). MOSQUITO SURVEILLANCE

Mosquito populations are monitored in both the larval and adult stages to determine the appropriate control methods to be employed, record prevalent mosquito species, and determine disease transmission potential. We supplement the Dept. of Public Health's arbovirus surveillance program, and send in samples weekly from all member communities to be tested for mosquito-borne viruses.

<http://www.cmmcp.org/arbovirus-surveillance-program>