

# CMMCP WEEKLY SURVEILLANCE REPORT



**EPI week #33**  
**Aug. 12-18, 2007**

**Frank Cornine**, *Field Biologist*  
**Curtis Best**, *Staff Entomologist*  
**Tim McGlinchy**, *Director of Operations*  
**Tim Deschamps**, *Executive Director*

**Central Mass. Mosquito Control Project**  
**Weekly Report- 8/12/07-8/18/07**  
**MMWR Week #33**

**Cumulative Surveillance Summary**

<b>Target Species</b>	<b><i>Ae. vex</i></b>	<b><i>Cq. per</i></b>	<b><i>Cs. mel</i></b>	<b><i>Oc. can</i></b>	<b><i>Culex</i></b>	<b>All Species</b>
<b>No. Pools</b>	65	384	187	194	466	2345
<b>Total Specimens</b>	314	19579	998	1091	6404	31471
<b>No. Pools WNV +</b>	0	0	0	0	1*	1*
<b>No. Pools EEE +</b>	0	0	0	0	0	0

\* Positive WNV pool of *Culex pipiens/restuans* found in Marlborough DPH trap set  
7/29/07

**Weather Summary (Northborough, MA):** The weather for this week averaged 69.87°F, which was .92°F cooler than the prior week. The recorded high temperature was 88.4°F with a recorded low temperature of only 52.0°F. There was 0.27 inches of precipitation this week compared to .58 inches of rain observed last week. The cumulative rainfall for the month of August has been 1.09 inches (rainfall total for July was 6.07 inches).

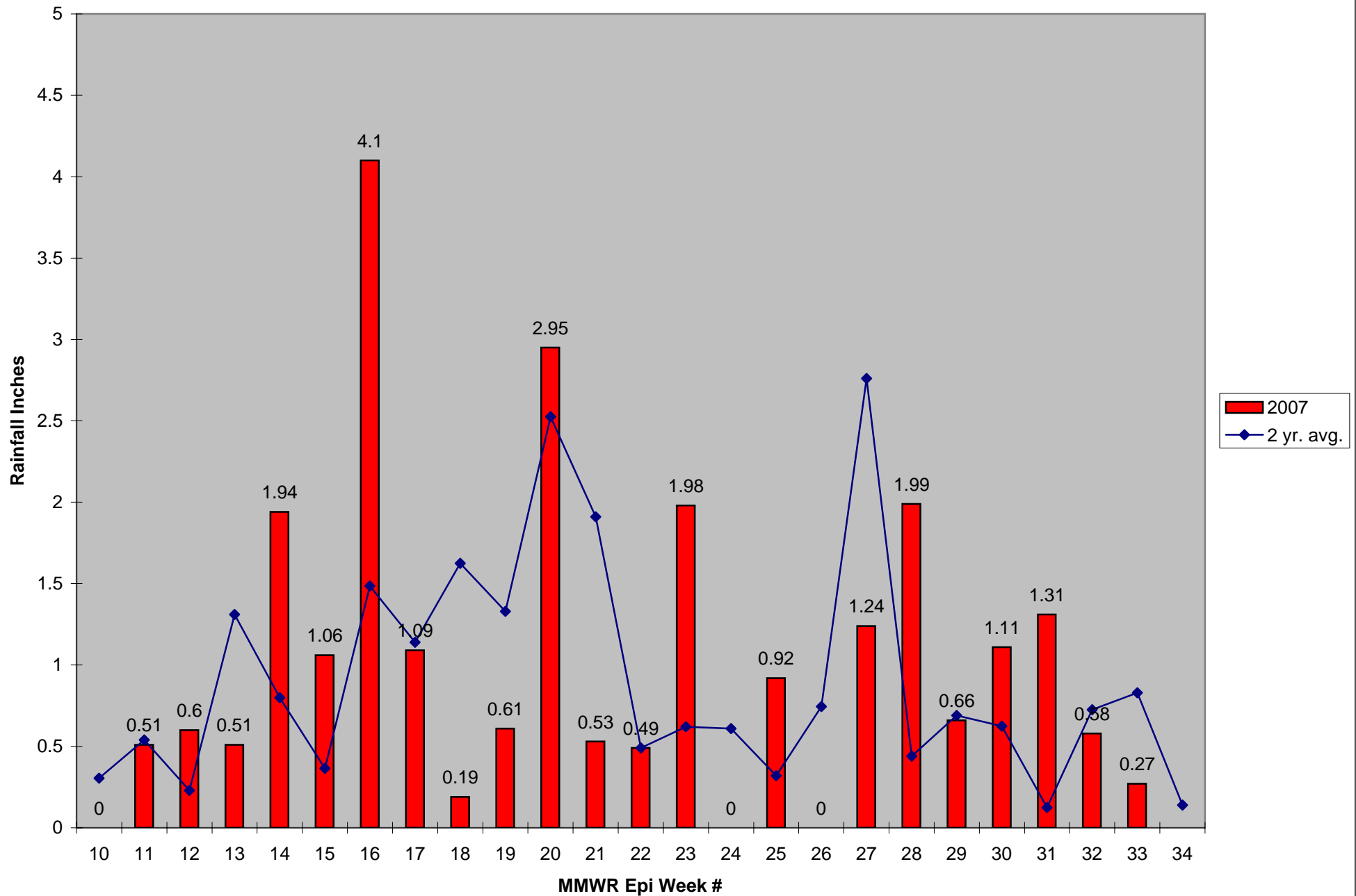
**CMMCP Weekly Mosquito Summary-**

<b>Target Species</b>	<b>Δ From Last Week</b>	<b>Δ From Last Year</b>	<b>Predominant Trap Site(s)</b>
<i>Aedes vexans</i>	+75.00%	-80.56%	Leominster
<i>Coquillettidia perturbans</i>	+93.90%	+89.66%	Stow, Sturbridge
<i>Culiseta melanura</i>	-45.83%	-85.06%	Hopkinton, Tewksbury
<i>Ochlerotatus canadensis</i>	-50.00%	-85.71%	Stow, Westford
<i>Culex</i> Species	+49.18%	-30.27%	Chelmsford, Hopedale
All Species	+66.92%	+9.46%	Hopedale, Stow

The predominant mosquito species for the week was *Coquillettidia perturbans*.

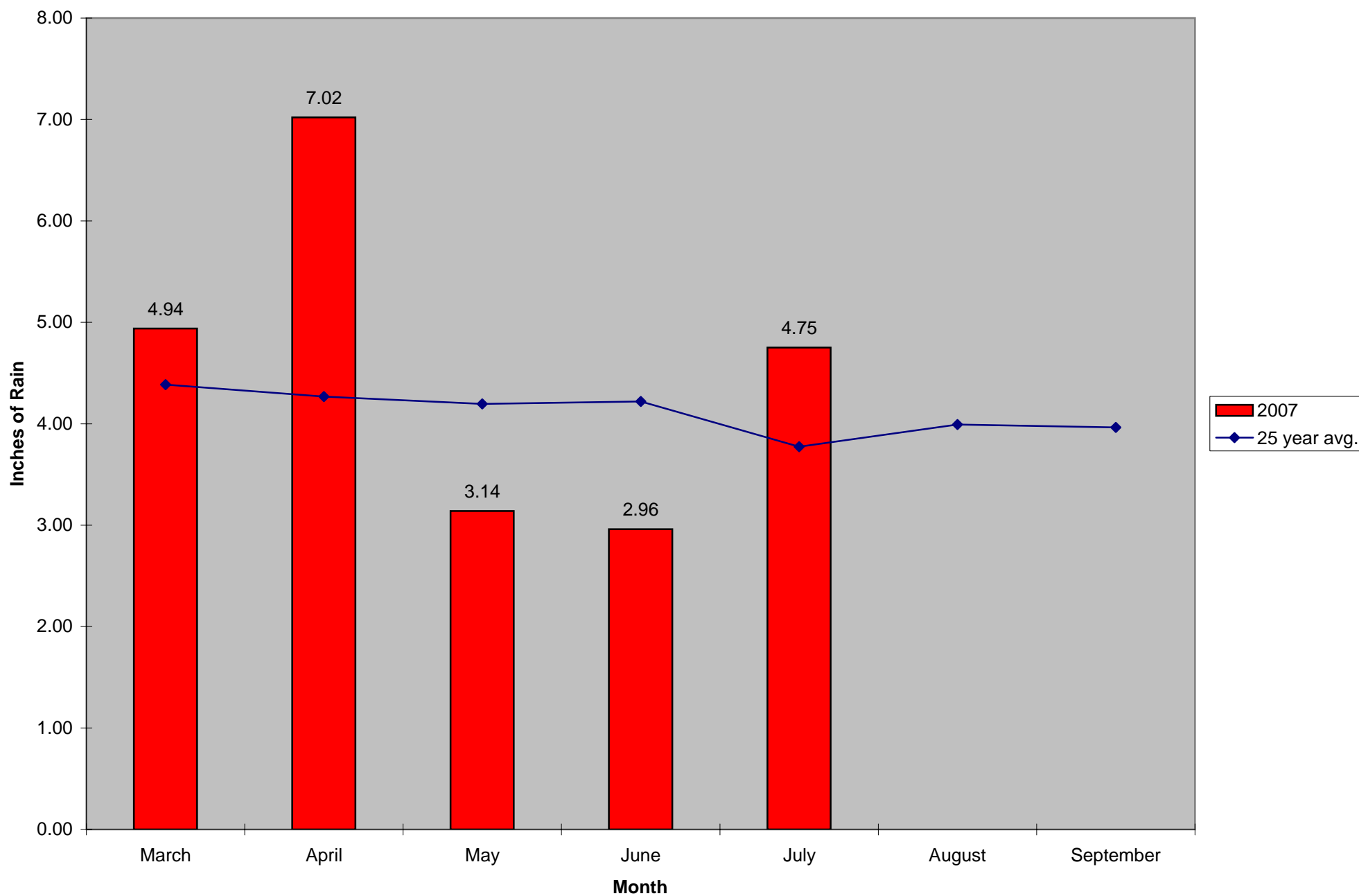
Service requests were down approximately 21% from the previous week according to the CMMCP Request Database.

2007 CMMCP Weekly Rainfall vs. 2 Year Average\*



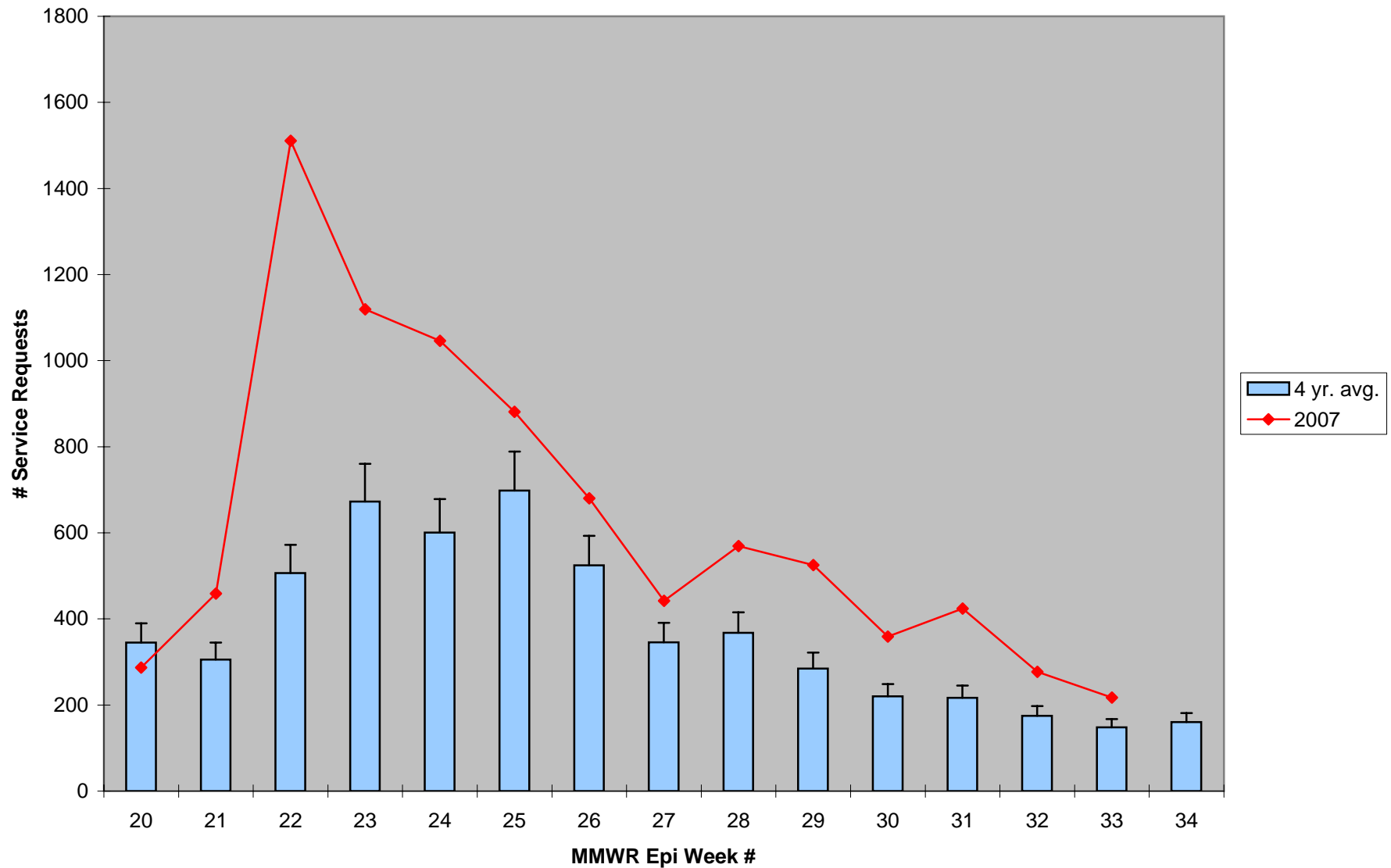
\*Source: CMMCP Weather Station - Northborough, MA

2007 Mass. Rainfall Data vs. 25 Year Average\*



\*Source: [http://www.nrcc.cornell.edu/climate/Climate\\_summary.html](http://www.nrcc.cornell.edu/climate/Climate_summary.html)

### ULV Service Request History Comparison 2003-2007



Standard deviation +13%

Source: CMMCP Request Database

39 towns 2007: 36 towns 2003-2006