

CMMCP WEEKLY SURVEILLANCE REPORT



EPI week #36
Sept. 2 - 8, 2007

Frank Cornine, *Field Biologist*
Curtis Best, *Staff Entomologist*
Tim McGlinchy, *Director of Operations*
Tim Deschamps, *Executive Director*

Central Mass. Mosquito Control Project
Weekly Report- 9/2/07-9/8/07
MMWR Week #36

Cumulative Surveillance Summary

Target Species	<i>Ae. vex</i>	<i>Cq. per</i>	<i>Cs. mel</i>	<i>Oc. can</i>	<i>Culex</i>	All Species
No. Pools	71	458	213	194	561	2767
Total Specimens	334	19963	1048	1091	7447	33577
No. Pools WNV +	0	0	0	0	2*	2*
No. Pools EEE +	0	0	0	0	0	0

* Positive WNV pools of *Culex pipiens/restuans* found in:
Marlborough DPH trap (set 7/29/07) & Holliston DPH trap (set 8/21/07)

Weather Summary (Northborough, MA): The weather for this week averaged 68.76°F, which was 3.74°F cooler than the prior week. The recorded high temperature was 94.7°F with a recorded low temperature of only 44.8°F. There was only 0.03 inches of recorded precipitation this week compared to 0 inches observed last week. The cumulative rainfall for the month of September has been 0.03 inches (rainfall total for August was 1.10 inches).

CMMCP Weekly Mosquito Summary-

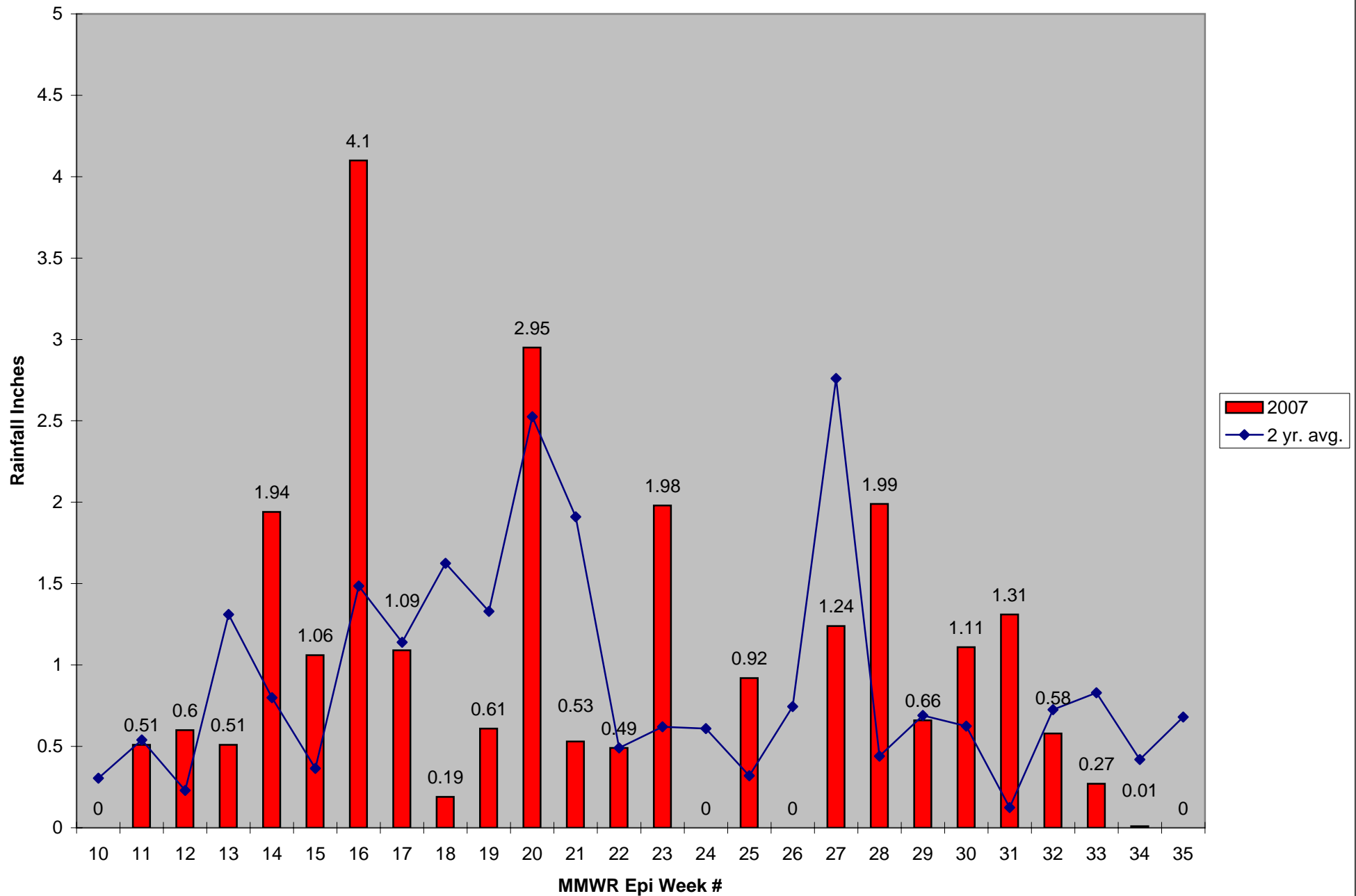
Target Species	Δ From Last Week	Δ From Last Year	Predominant Trap Site(s)
<i>Aedes vexans</i>	+1400.00%*	-55.88%	Chelmsford
<i>Coquillettidia perturbans</i>	-30.69%	-50.70%	Stow, Westborough
<i>Culiseta melanura</i>	-38.89%	-84.29%	Westborough
<i>Ochlerotatus canadensis</i>	0.00%	-100.00%	N/A
<i>Culex</i> Species	-41.65%	+79.58%	Hopedale
All Species	-26.76%	-5.21%	Chelmsford, Hopedale

*This comparison is not as significant as it appears due to extreme low numbers.

The predominant mosquito species for the week was *Culex pipiens/restuans*.

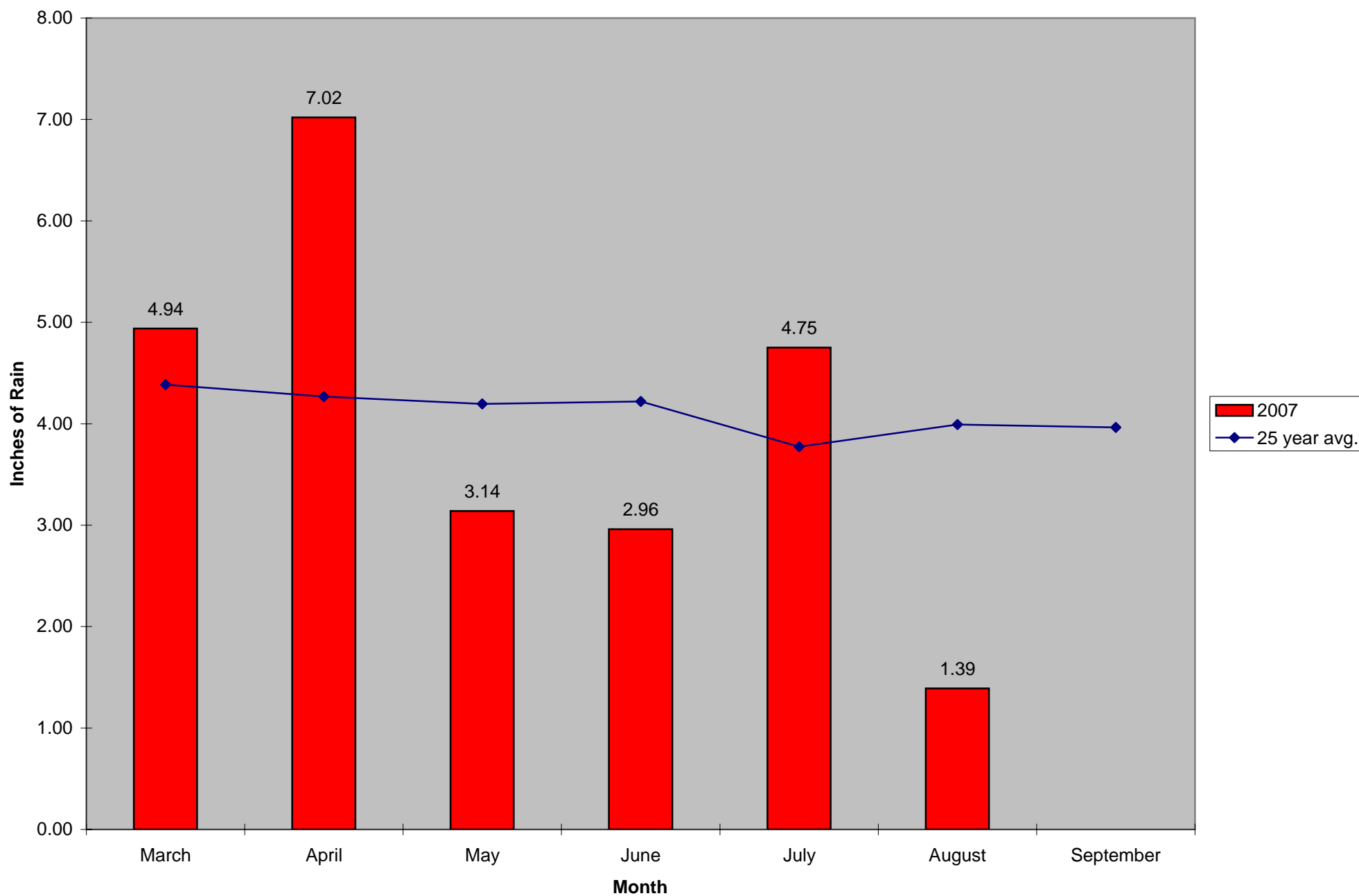
Service requests were down approximately 80% from the previous week according to the CMMCP Request Database.

2007 CMMCP Weekly Rainfall vs. 2 Year Average*



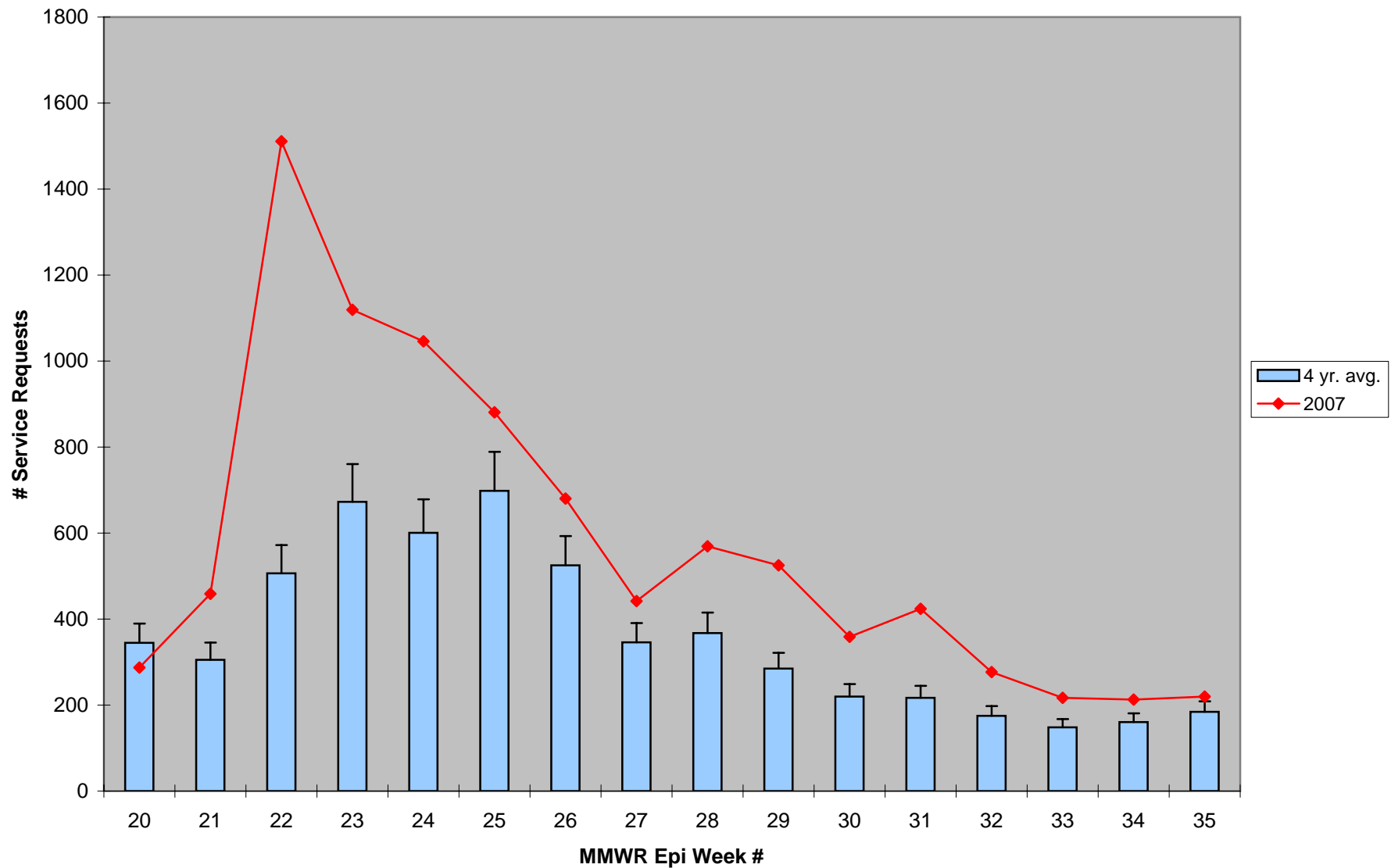
*Source: CMMCP Weather Station - Northborough, MA

2007 Mass. Rainfall Data vs. 25 Year Average*



*Source: http://www.nrcc.cornell.edu/climate/Climate_summary.html

ULV Service Request History Comparison 2003-2007



Standard deviation +13%

Source: CMMCP Requests Databases

39 towns 2007: 36 towns 2003-2006