

CMMCP WEEKLY SURVEILLANCE REPORT



EPI week #24
June 8 - 14, 2008

Frank Cornine, *Field Biologist*
Curtis Best, *Staff Entomologist*
Tim McGlinchy, *Director of Operations*
Tim Deschamps, *Executive Director*

Central Mass. Mosquito Control Project
Weekly Report- 6/8/08-6/14/08
MMWR Epi Week #24

Cumulative Surveillance Summary

Target Species	<i>Ae. vex</i>	<i>Cq. per</i>	<i>Cs. mel</i>	<i>Oc. can</i>	<i>Culex</i>	All Species
No. Pools	4	26	22	43	77	351
Total Specimens	84	255	102	619	895	2873
No. Pools WNV +	0	0	0	0	0	0
No. Pools EEE +	0	0	0	0	0	0

Weather Summary (Northborough, MA): The weather for this particular week averaged 76.14°F with a recorded high temperature of 99.9°F and a recorded low temperature of only 47.4°F. For this week there was also a total of .15 inches of rain observed. Compared to the previous week, it was approximately 11.3°F warmer on average, and rained about .58 inches less. Including this week, rainfall for the month of June has totaled .88 inches, compared to May which finished with 1.98 inches.

CMMCP Mosquito Summary-

Target Species	Δ From Last Week	Δ From Last Year	Predominant Trap Site(s)
-----------------------	-----------------------------	-----------------------------	---------------------------------

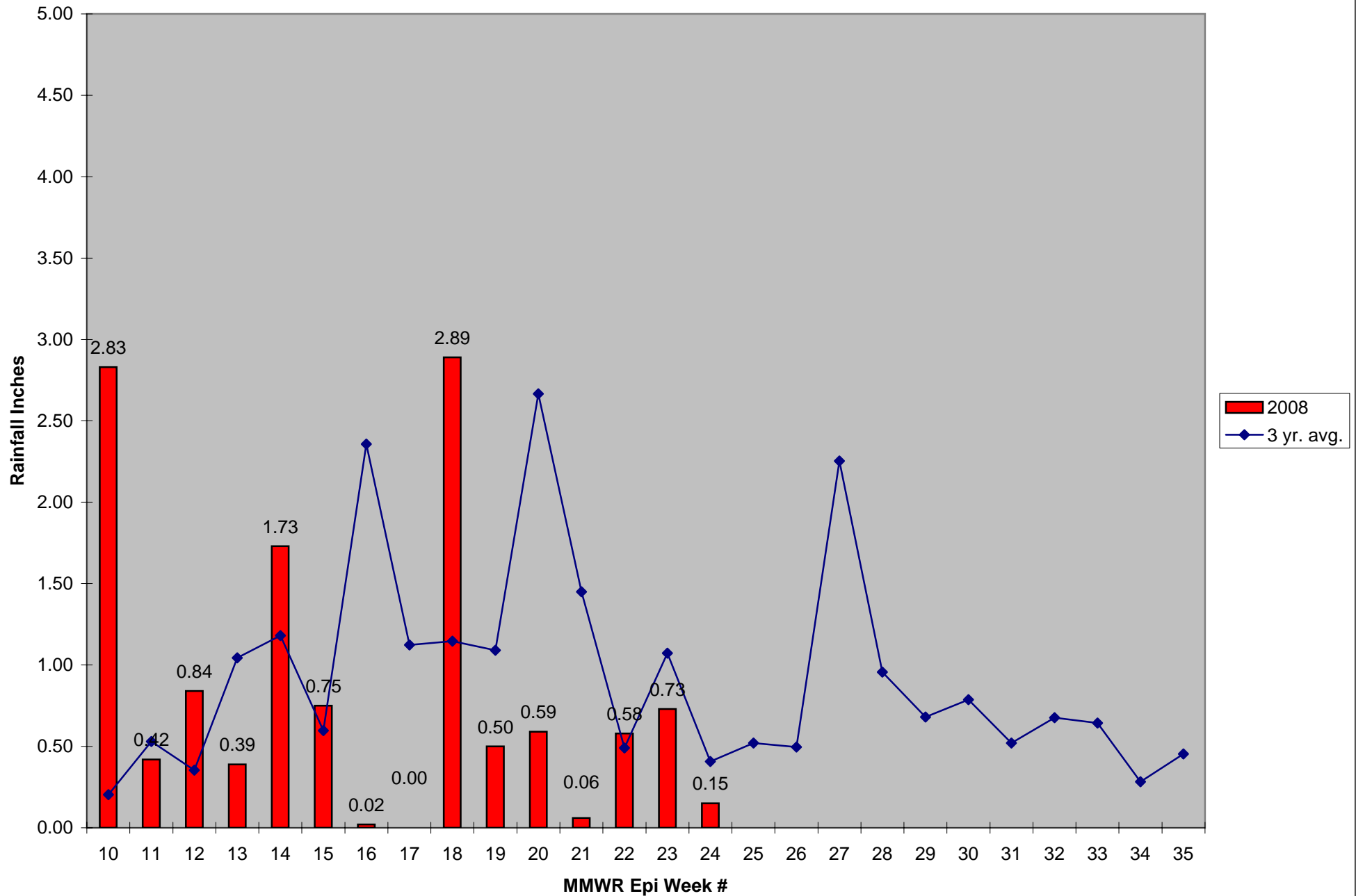
<i>Aedes vexans</i>	-47.27%	+45.00%	Hopkinton (Fruit St.)
<i>Coquillettidia perturbans</i>	+1621.43%	-64.92%	Ashland, Lancaster
<i>Culiseta melanura</i>	-38.10%	-73.83%	Tewksbury
<i>Ochlerotatus canadensis</i>	-74.19%	-7.30%	Ashland
<i>Culex</i> Species	-28.21%	+101.08%	Stow, Shrewsbury
All Species	-36.11%	-22.60%	Ashland, Stow

The predominant mosquito species for the week was *Culex pipiens/restuans*.

Monthly rainfall for May was 1.98 inches below the 26 year average of 4.16 inches. Weekly rainfall for the past 6 weeks was less than one inch per week (.435 average per week). The last significant rain event was Epi week 18 with 2.89 inches total rainfall.

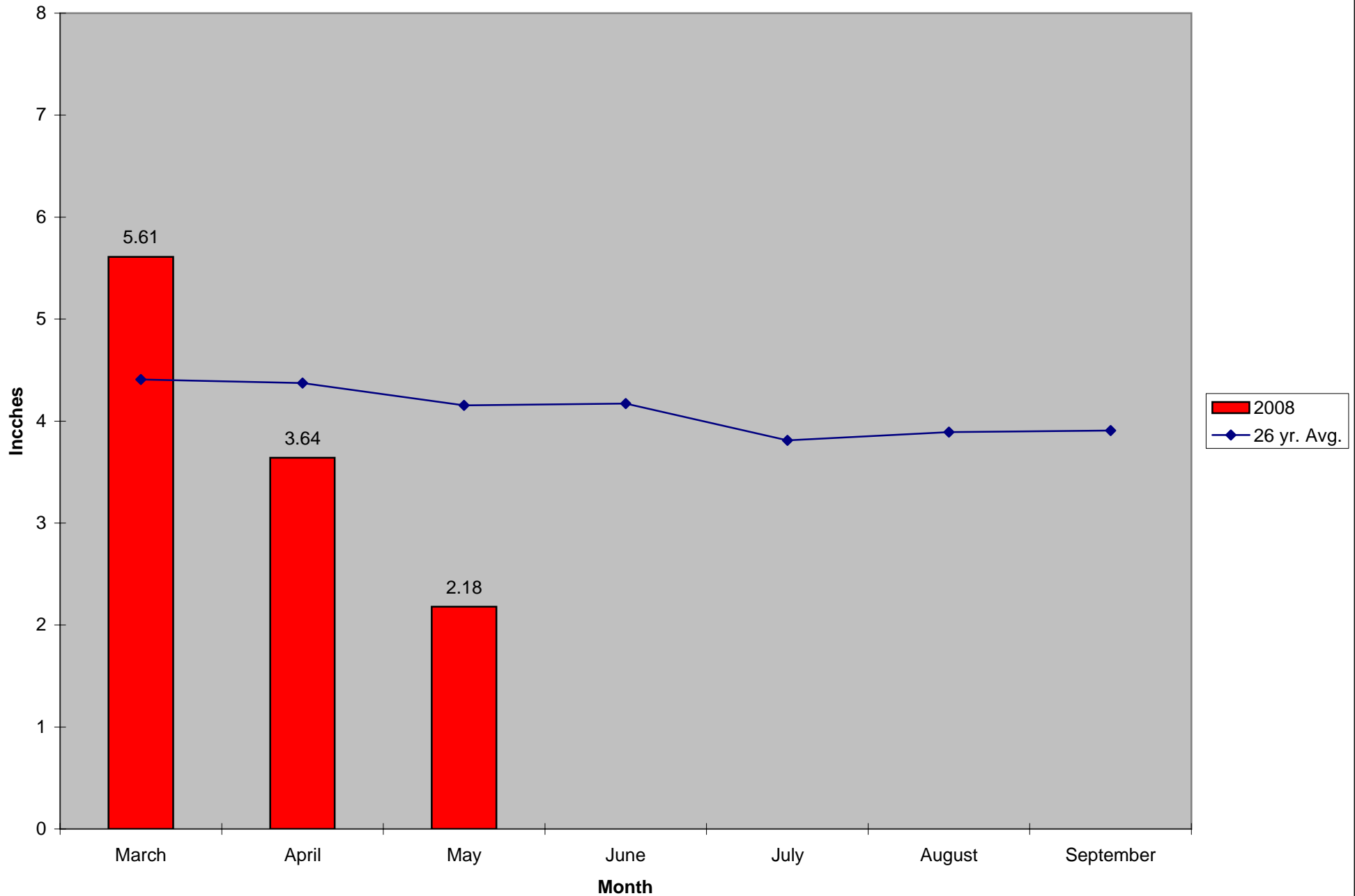
Service requests are 26% above the 5 year average but 21% lower than the previous week with 870 requests received.

2008 CMMCP Weekly Rainfall vs. 3 Year Average*



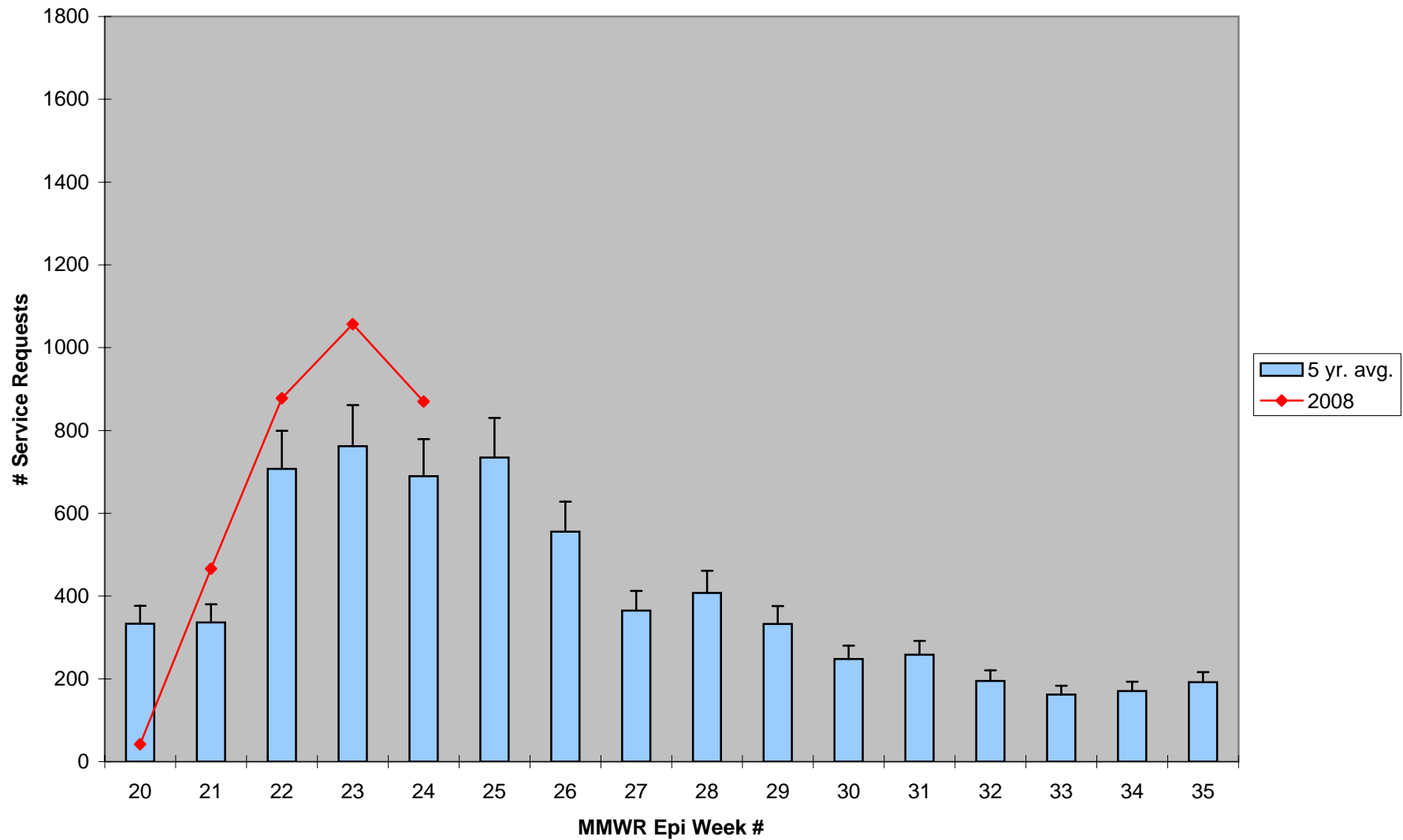
*Source: CMMCP Weather Station - Northborough, MA

2008 Mass. Rainfall Data vs. 26 Year Average*



*Source: Northeast Regional Climate Center: http://www.nrcc.cornell.edu/climate/Climate_summary.html

ULV Service Request History Comparison 2003-2008



Error bars show approx. number of requests if we had 39 cities and towns over the 5 year average