

CMMCP WEEKLY SURVEILLANCE REPORT



EPI week #25
June 15 - 21, 2008

Frank Cornine, *Field Biologist*
Curtis Best, *Staff Entomologist*
Tim McGlinchy, *Director of Operations*
Tim Deschamps, *Executive Director*

Central Mass. Mosquito Control Project
Weekly Report- 6/15/08-6/21/08
MMWR Epi Week #25

Cumulative Surveillance Summary

Target Species	<i>Ae. vex</i>	<i>Cq. per</i>	<i>Cs. mel</i>	<i>Oc. can</i>	<i>Culex</i>	All Species
No. Pools	5	59	36	62	122	538
Total Specimens	85	994	187	754	1560	4636
No. Pools WNV +	0	0	0	0	0	0
No. Pools EEE +	0	0	0	0	0	0

Weather Summary (Northborough, MA): The weather for this particular week averaged 64.19°F with a recorded high temperature of 82.6°F and a recorded low temperature of only 50.2°F. For this week there was also a total of 1.06 inches of rain observed. Compared to the previous week, it was approximately 11.95°F cooler on average, and rained about .91 inches more. Including this week, rainfall for the month of June has totaled 1.94 inches, compared to May which finished with 1.98 inches.

CMMCP Mosquito Summary-

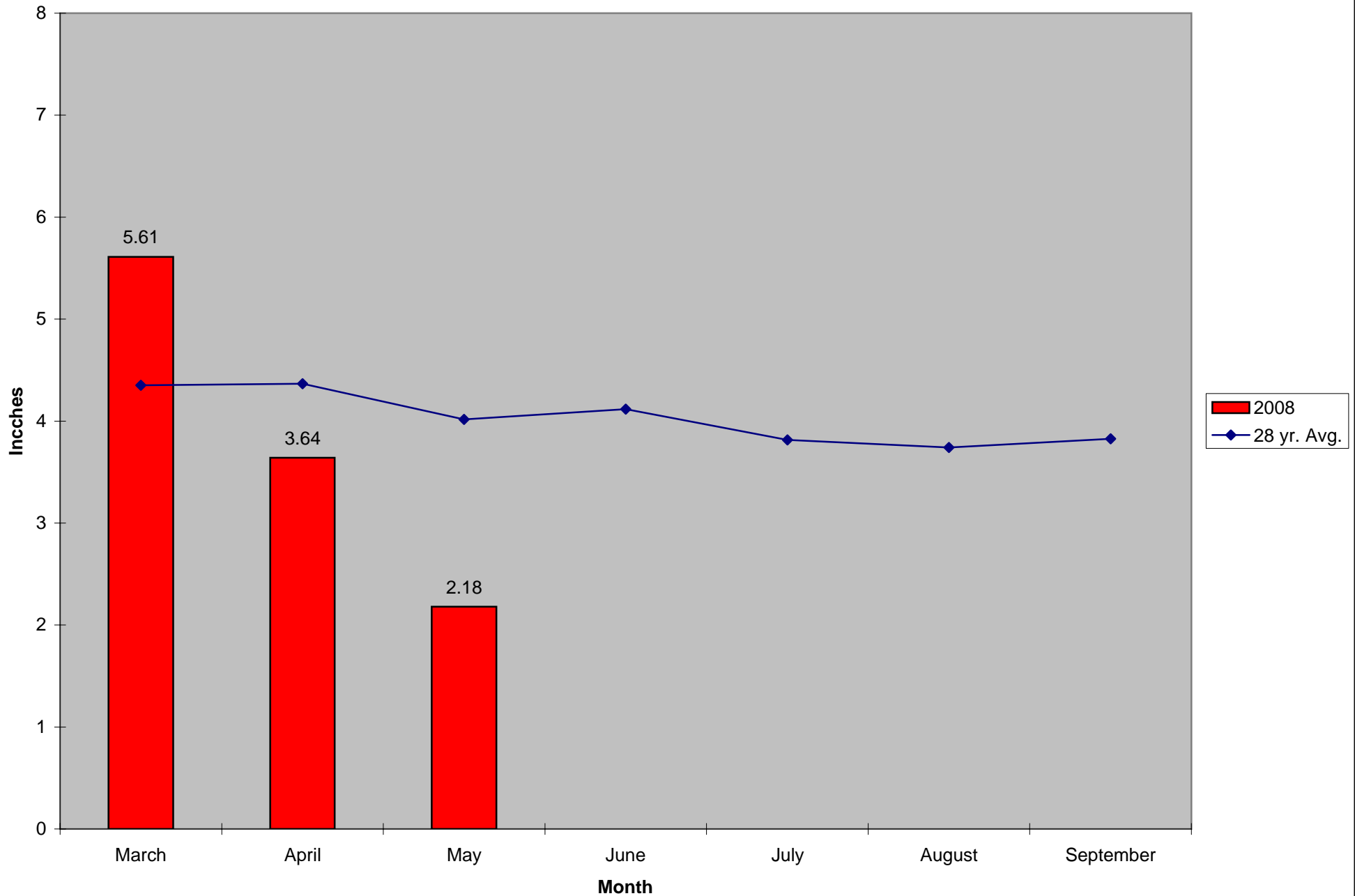
Target Species	Δ From Last Week	Δ From Last Year	Predominant Trap Site(s)
<i>Aedes vexans</i>	-96.55%	-96.77%	Sturbridge
<i>Coquillettidia perturbans</i>	+206.64%	-45.54%	Hopkinton, Wilmington
<i>Culiseta melanura</i>	+117.95%	-12.37%	Tewksbury
<i>Ochlerotatus canadensis</i>	+6.30%	+31.07%	Hopkinton
<i>Culex</i> Species	+77.81%	+71.83%	Clinton, Marlborough, Stow
All Species	+57.41%	-21.01%	Hopkinton, Wilmington

The predominant mosquito species for the week was *Coquillettidia perturbans*.

Monthly rainfall for May was 1.84 inches below the 28 year average of 4.02 inches. Weekly rainfall for the past 6 weeks was less than one inch per week (.435 average per week). The last significant rain event was Epi week 18 with 2.89 inches total rainfall.

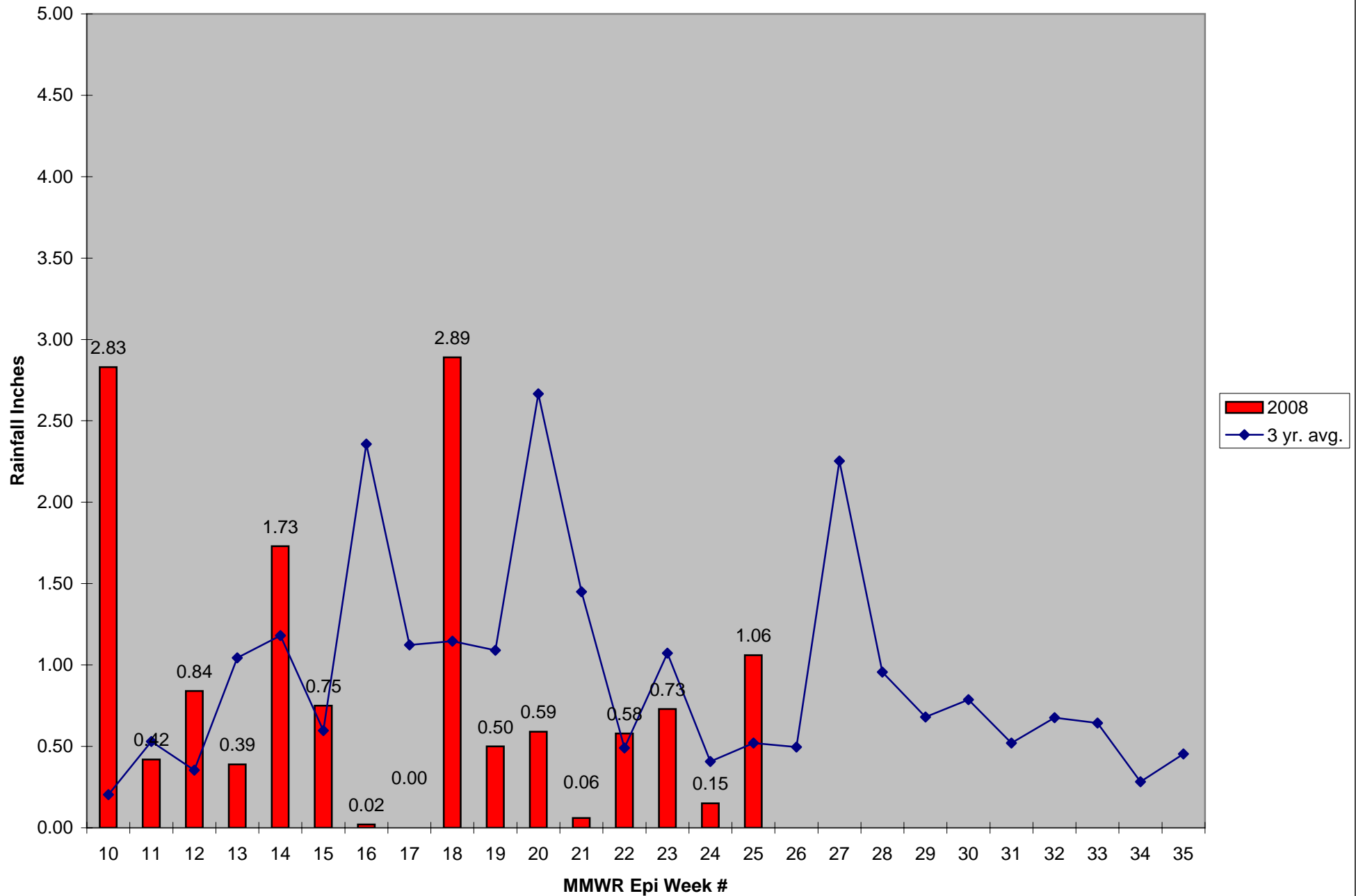
Service requests are 13% below the 5 year average and 38% lower than the previous week with 638 requests received.

2008 Mass. Rainfall Data vs. 28 Year Average*



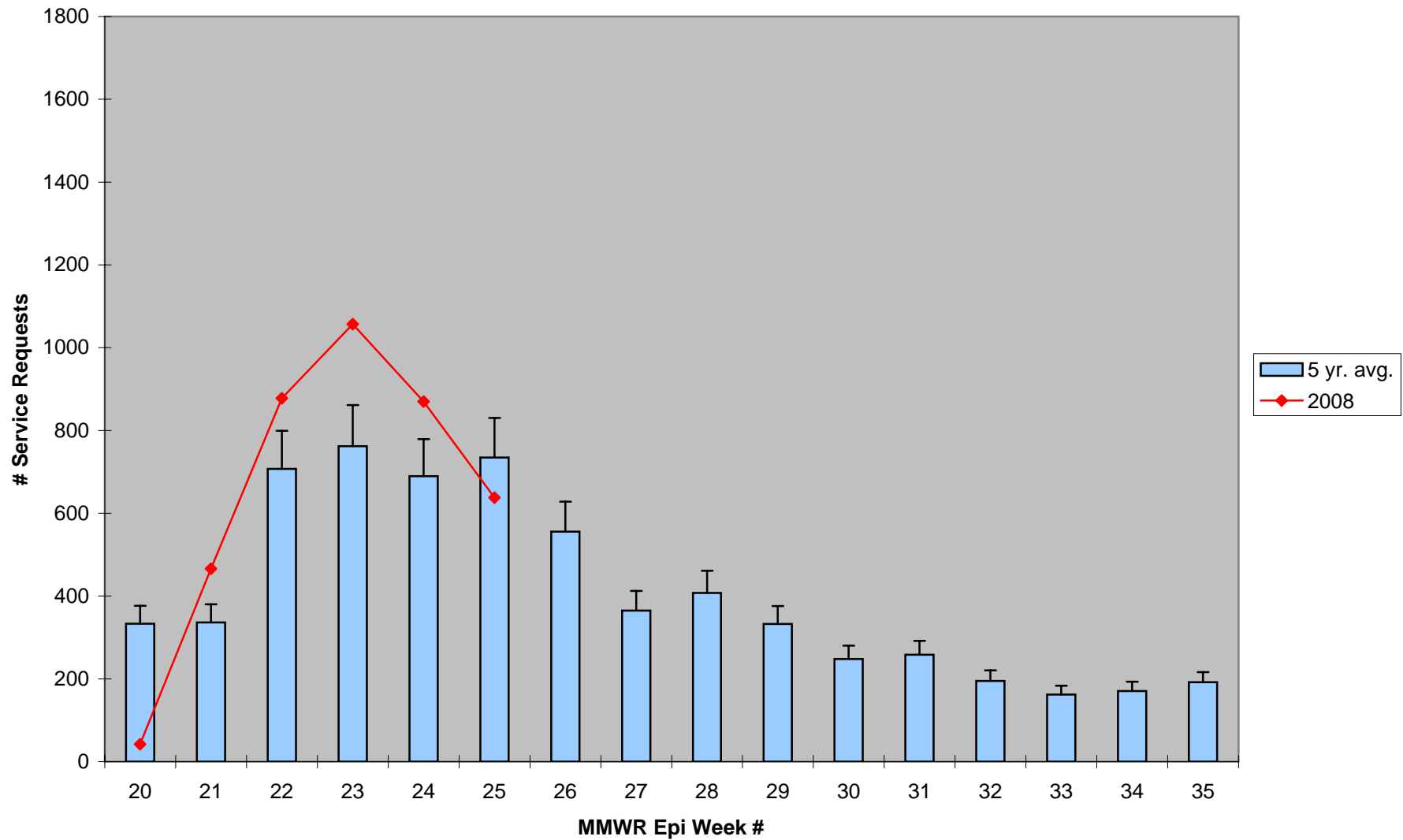
*Source: Northeast Regional Climate Center: http://www.nrcc.cornell.edu/climate/Climate_summary.html

2008 CMMCP Weekly Rainfall vs. 3 Year Average*



*Source: CMMCP Weather Station - Northborough, MA

ULV Service Request History Comparison 2003-2008



Error bars show approx. number of requests if we had 39 cities and towns over the 5 year average