

CMMCP WEEKLY SURVEILLANCE REPORT



EPI week #26
June 22 - 28, 2008

Frank Cornine, *Field Biologist*
Curtis Best, *Staff Entomologist*
Tim McGlinchy, *Director of Operations*
Tim Deschamps, *Executive Director*

Central Mass. Mosquito Control Project
Weekly Report- 6/22/08-6/28/08
MMWR Week #26

Cumulative Surveillance Summary

Target Species	<i>Ae. vex</i>	<i>Cq. per</i>	<i>Cs. mel</i>	<i>Oc. can</i>	<i>Culex</i>	All Species
No. Pools	5	94	53	81	168	730
Total Specimens	85	2725	233	924	2440	7669
No. Pools WNV +	0	0	0	0	0	0
No. Pools EEE +	0	0	0	0	0	0

Weather Summary (Northborough, MA): The weather for this particular week averaged 69.33°F with a recorded high temperature of 84.1°F and a recorded low temperature of only 59.2°F. For this week there was also a total of 1.29 inches of rain observed. Compared to the previous week, it was approximately 5.13°F warmer on average, and rained about .23 inches more. Including this week, rainfall for the month of June has totaled 3.23 inches, compared to May which finished with 1.98 inches.

CMMCP Mosquito Summary-

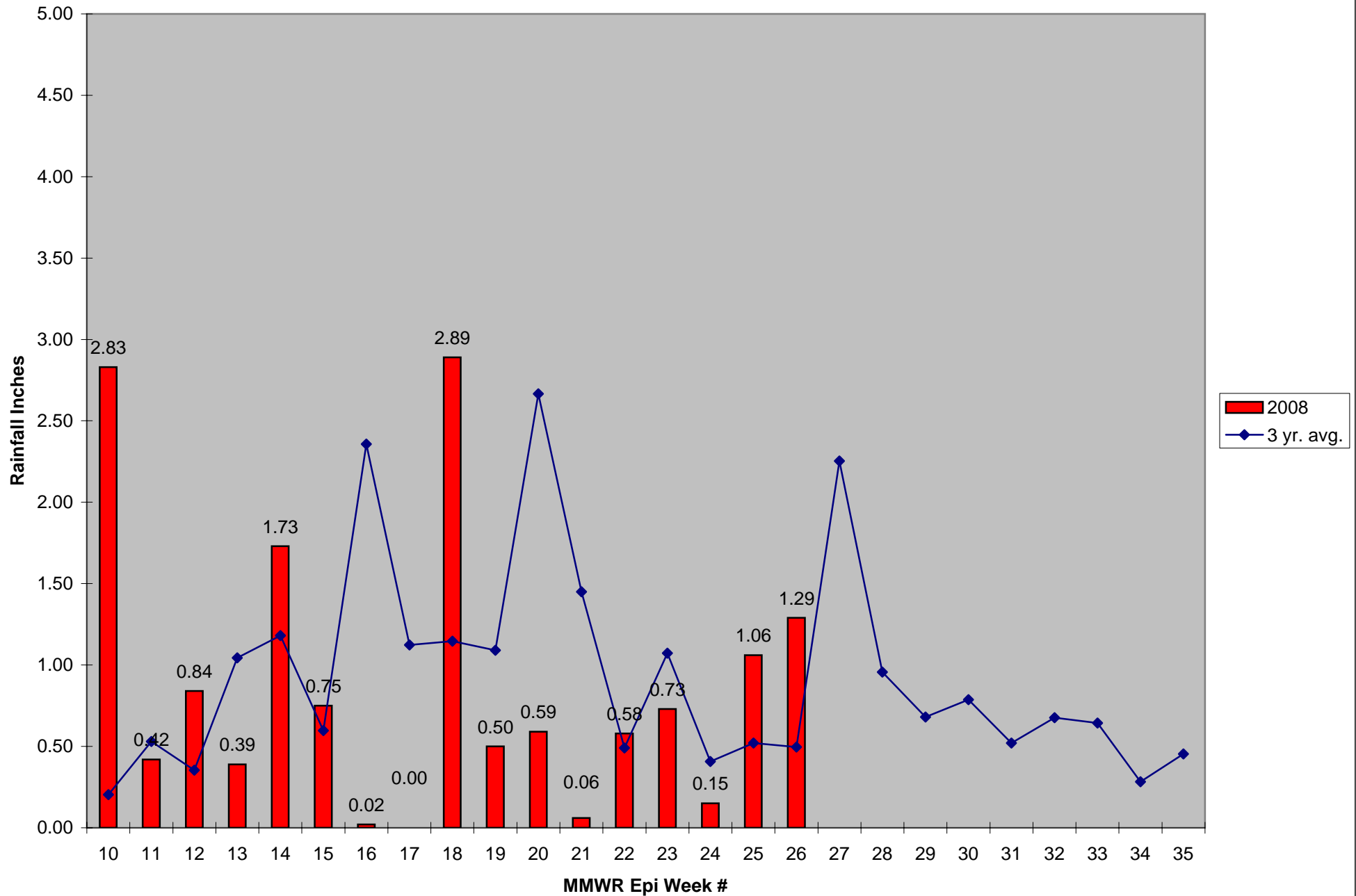
Target Species	Δ From Last Week	Δ From Last Year	Predominant Trap Site(s)
<i>Aedes vexans</i>	-100.00%	-100.00%	N/A
<i>Coquillettidia perturbans</i>	+134.24%	-31.61%	Dracut, Hopkinton
<i>Culiseta melanura</i>	-45.88%	-63.20%	Billerica
<i>Ochlerotatus canadensis</i>	+25.93%	+86.81%	Marlborough, Hopkinton
<i>Culex</i> Species	+32.33%	+22.56%	Clinton, Hudson, Stow
All Species	+72.04%	-16.31%	Dracut, Hopkinton

The predominant mosquito species for the week was *Coquillettidia perturbans*.

Monthly rainfall for May was 1.84 inches below the 28 year average of 4.02 inches. Rainfall for this week was 1.29".

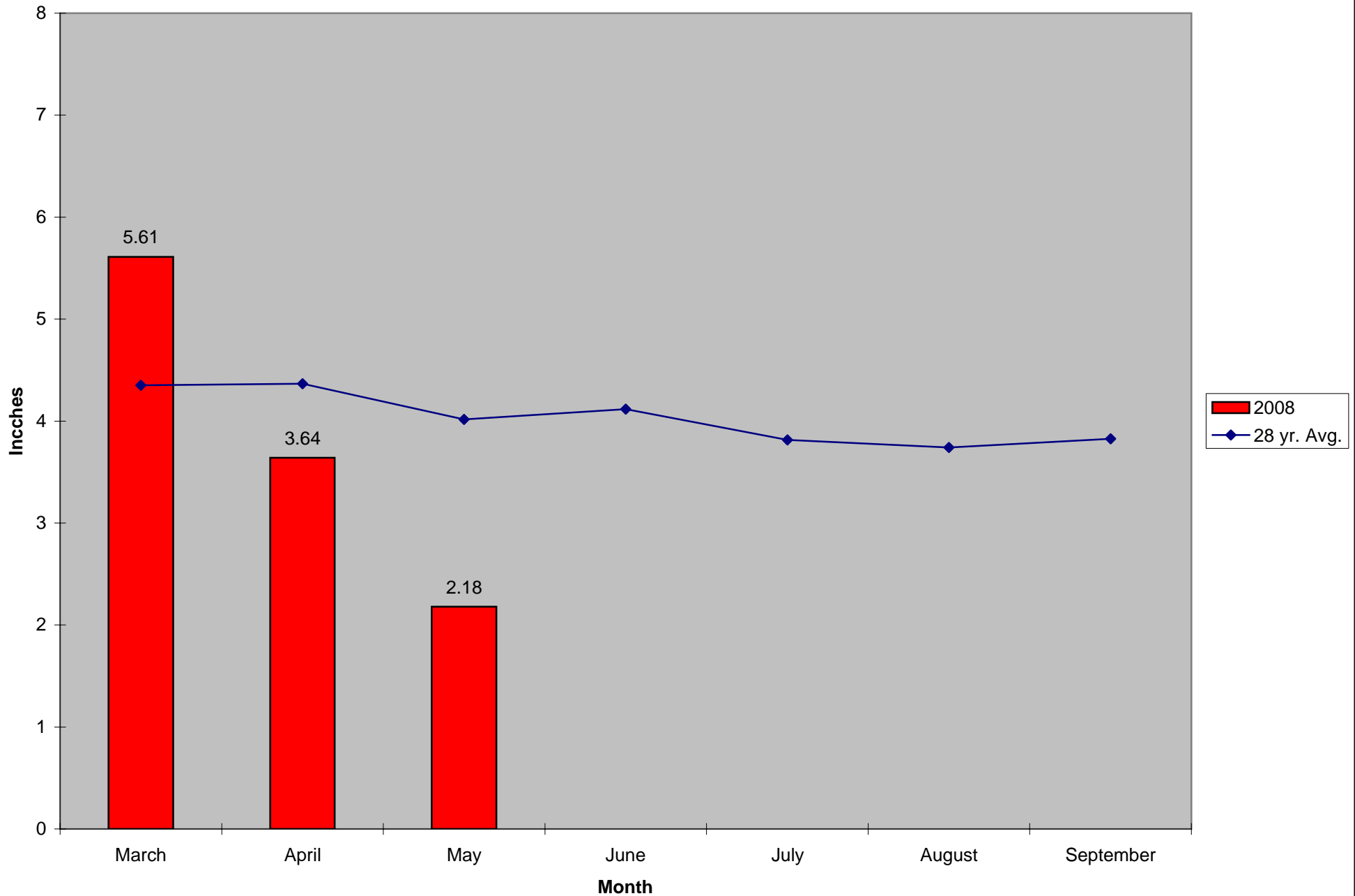
Service requests have been consistent the past 3 weeks, and are 13% above the 5 year average and <1% lower than the previous week with 629 requests received.

2008 CMMCP Weekly Rainfall vs. 3 Year Average*



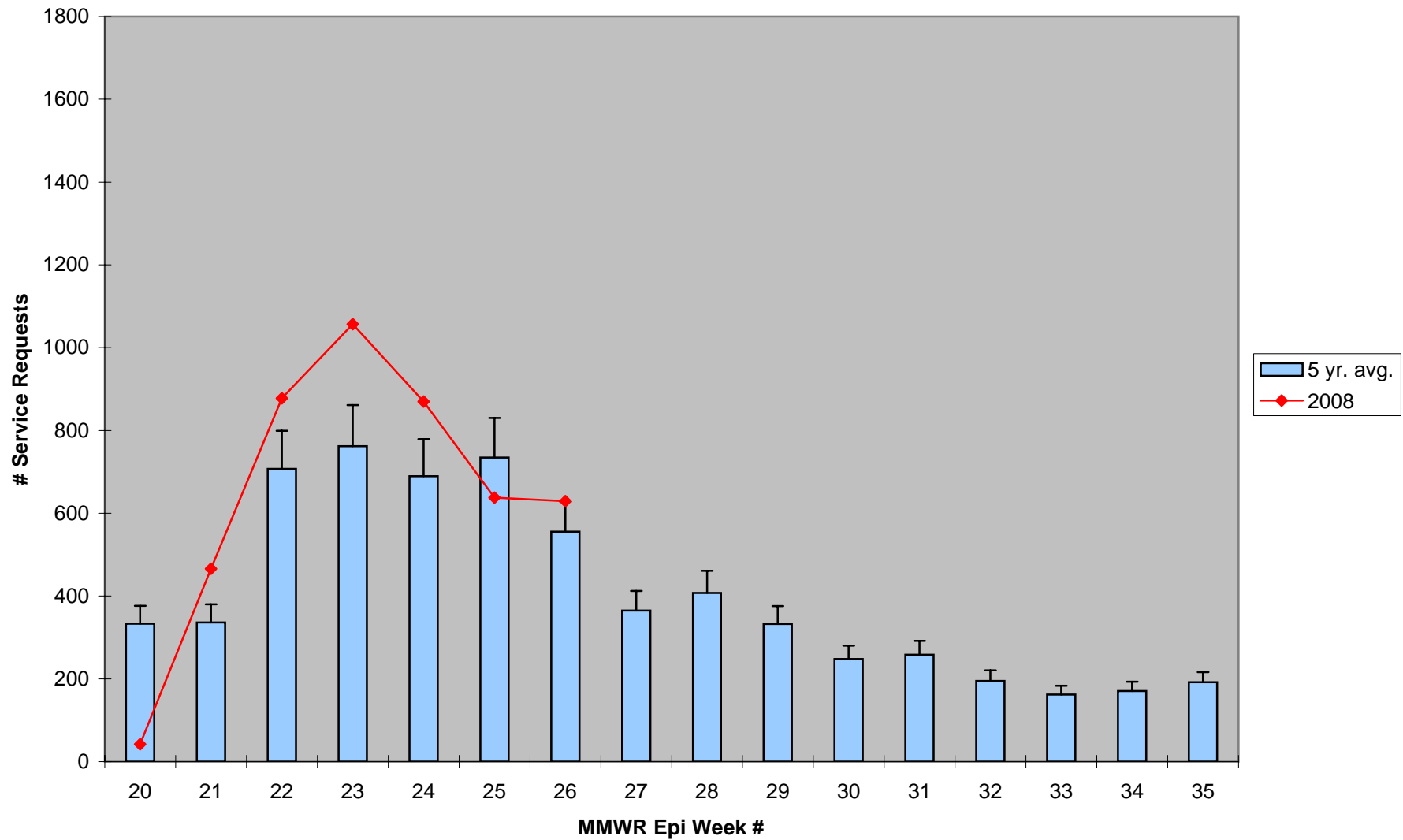
*Source: CMMCP Weather Station - Northborough, MA

2008 Mass. Rainfall Data vs. 28 Year Average*



*Source: Northeast Regional Climate Center: http://www.nrcc.cornell.edu/climate/Climate_summary.html

ULV Service Request History Comparison 2003-2008



Error bars show approx. number of requests if we had 39 cities and towns over the 5 year average