

CMMCP WEEKLY SURVEILLANCE REPORT



EPI week #28
July 6 - 12, 2008

Frank Cornine, *Field Biologist*
Curtis Best, *Staff Entomologist*
Tim McGlinchy, *Director of Operations*
Tim Deschamps, *Executive Director*

Central Mass. Mosquito Control Project
Weekly Report- 7/6/08-7/12/08
MMWR Week #28

Cumulative Surveillance Summary

Target Species	<i>Ae. vex</i>	<i>Cq. per</i>	<i>Cs. mel</i>	<i>Oc. can</i>	<i>Culex</i>	All Species
No. Pools	16	155	77	110	242	1098
Total Specimens	118	7568	392	1025	3732	14422
No. Pools WNV +	0	0	0	0	1*	1*
No. Pools EEE +	0	0	0	0	0	0

*Pool of WNV+ *Culex pipiens/restuans* collected in Millbury on 7/1/08

Weather Summary (Northborough, MA): The weather for this particular week averaged 85.21°F with a recorded high temperature of 89.7°F and a recorded low temperature of only 57.0°F. For this week there was also a total of 0.52 inches of rain observed. Compared to the previous week, it was approximately 14.71°F warmer on average, and rained about .97 inches less. After this week, the rainfall for the month of July has totaled 1.63 inches.

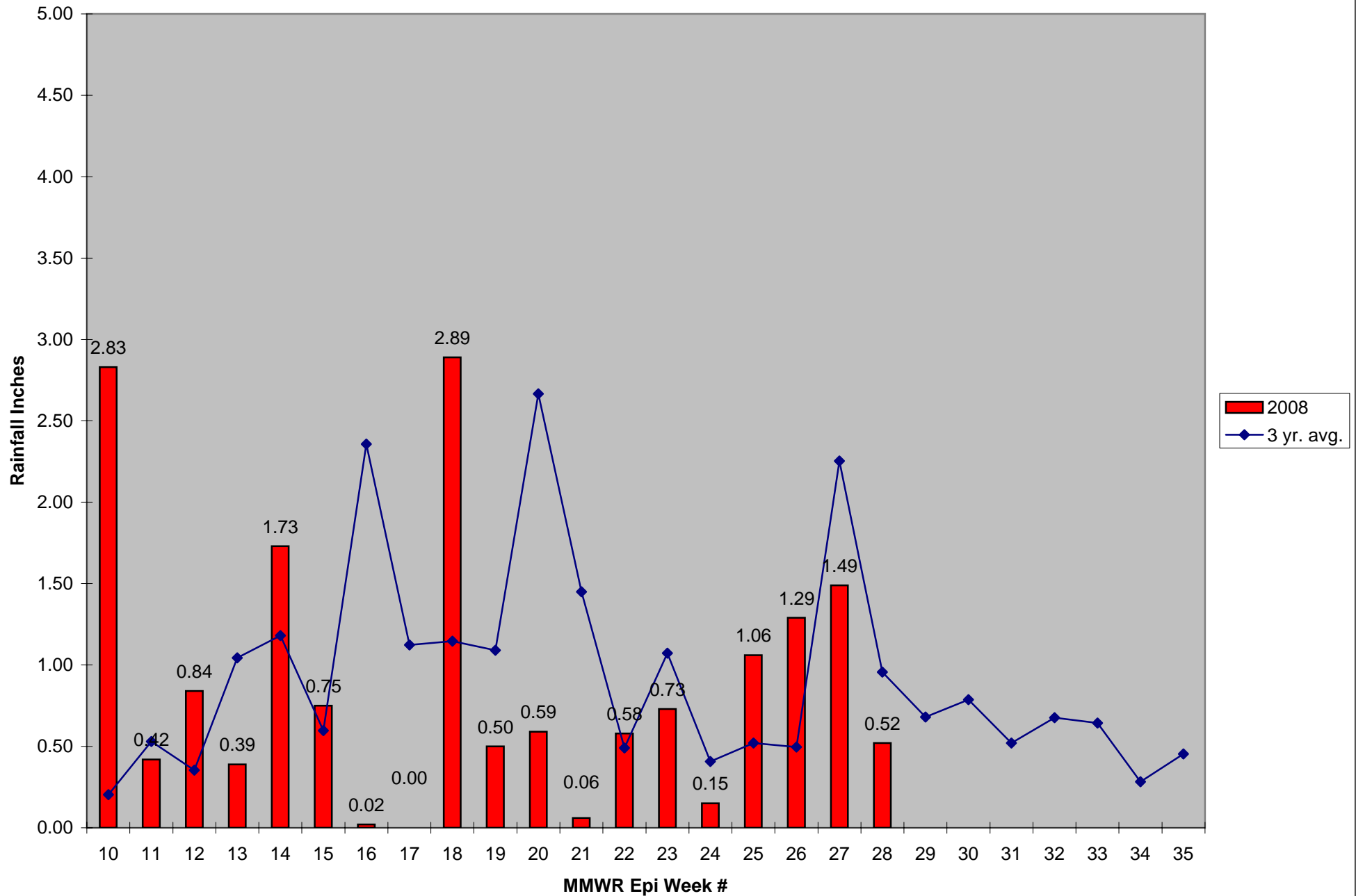
CMMCP Mosquito Summary-

Target Species	Δ From Last Week	Δ From Last Year	Predominant Trap Site(s)
<i>Aedes vexans</i>	+∞	-56.58%	Westborough
<i>Coquillettidia perturbans</i>	-3.93%	-47.83%	Westborough, Boxborough, Stow
<i>Culiseta melanura</i>	+33.82%	+30.00%	Shrewsbury, Westborough
<i>Ochlerotatus canadensis</i>	+10.42%	-50.47%	Dracut
<i>Culex</i> Species	+81.48%	+5.98%	Clinton
All Species	+12.23%	-38.42%	Westborough, Clinton, Boxborough

The predominant mosquito species for the week was *Coquillettidia perturbans*.

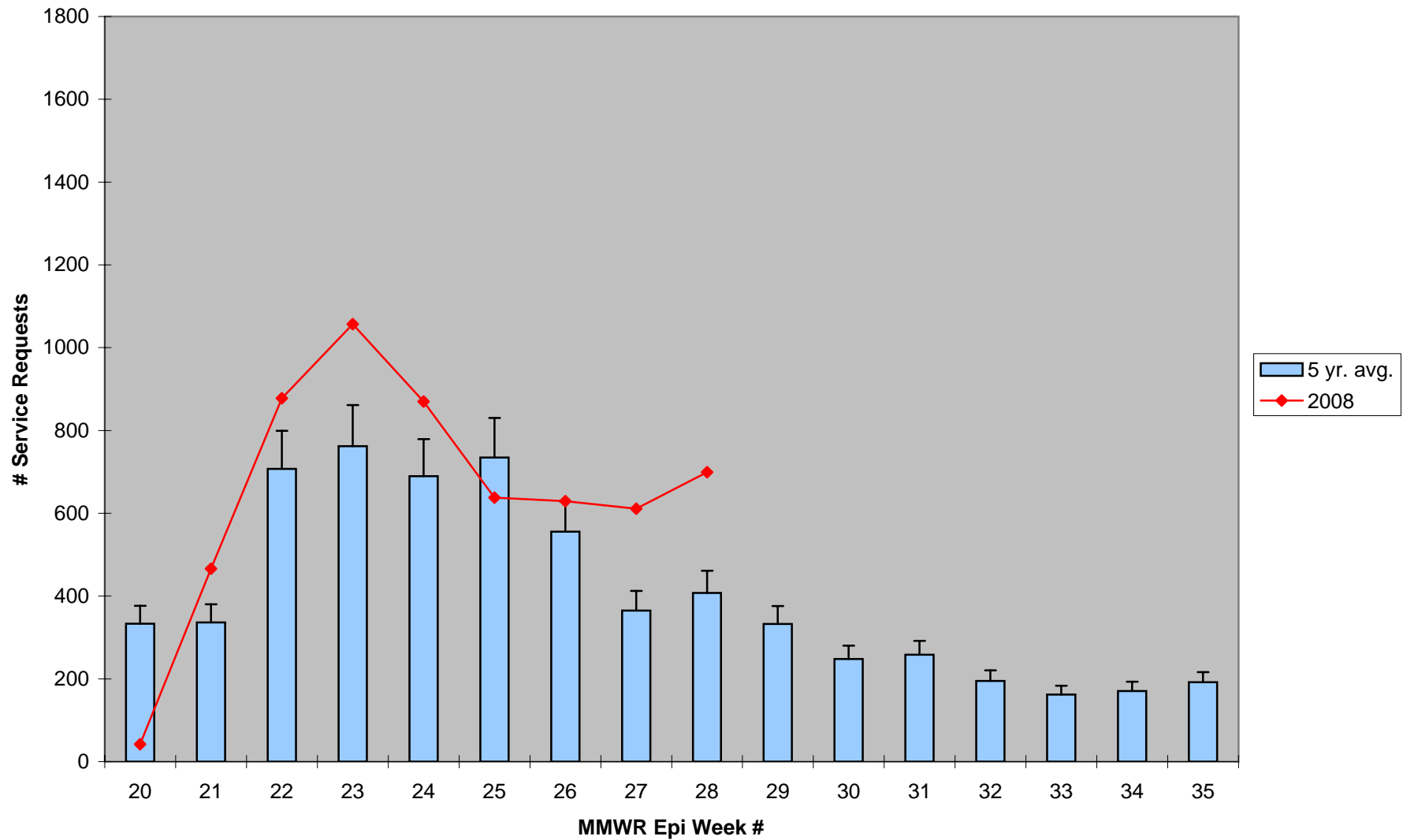
Service requests have been consistent the past 4 weeks (average 644/week), but are 71% above the 5 year average and 14% higher than the previous week with 699 requests received.

2008 CMMCP Weekly Rainfall vs. 3 Year Average*



*Source: CMMCP Weather Station - Northborough, MA

ULV Service Request History Comparison 2003-2008



Error bars show approx. number of requests if we had 39 cities and towns over the 5 year average