

CMMCP WEEKLY SURVEILLANCE REPORT



EPI week #31
July 27 – Aug. 2, 2008

Frank Cornine, *Field Biologist*
Curtis Best, *Staff Entomologist*
Tim McGlinchy, *Director of Operations*
Tim Deschamps, *Executive Director*

Central Mass. Mosquito Control Project
Weekly Report- 7/27/08-8/2/08
MMWR Week #31

Cumulative Surveillance Summary

Target Species	<i>Ae. vex</i>	<i>Cq. per</i>	<i>Cs. mel</i>	<i>Oc. can</i>	<i>Culex</i>	All Species
No. Pools	43	250	119	137	362	1704
Total Specimens	273	13134	556	1197	6183	24167
No. Pools WNV +	0	0	0	0	1*	1*
No. Pools EEE +	0	0	0	0	0	0

*Pool of WNV+ *Culex pipiens/restuans* collected in Millbury on 7/1/08

Weather Summary (Northborough, MA): The weather for this particular week averaged only 72.50°F with a recorded high temperature of 87.6°F and a recorded low temperature of only 60.2°F. For this week there was also a total of 1.74 inches of rain observed. Compared to the previous week, it was approximately .24°F cooler on average, and rained about 1.85 inches less. After this week, the rainfall for the month of August has totaled .46 inches, while the month of July finished with 6.72 inches.

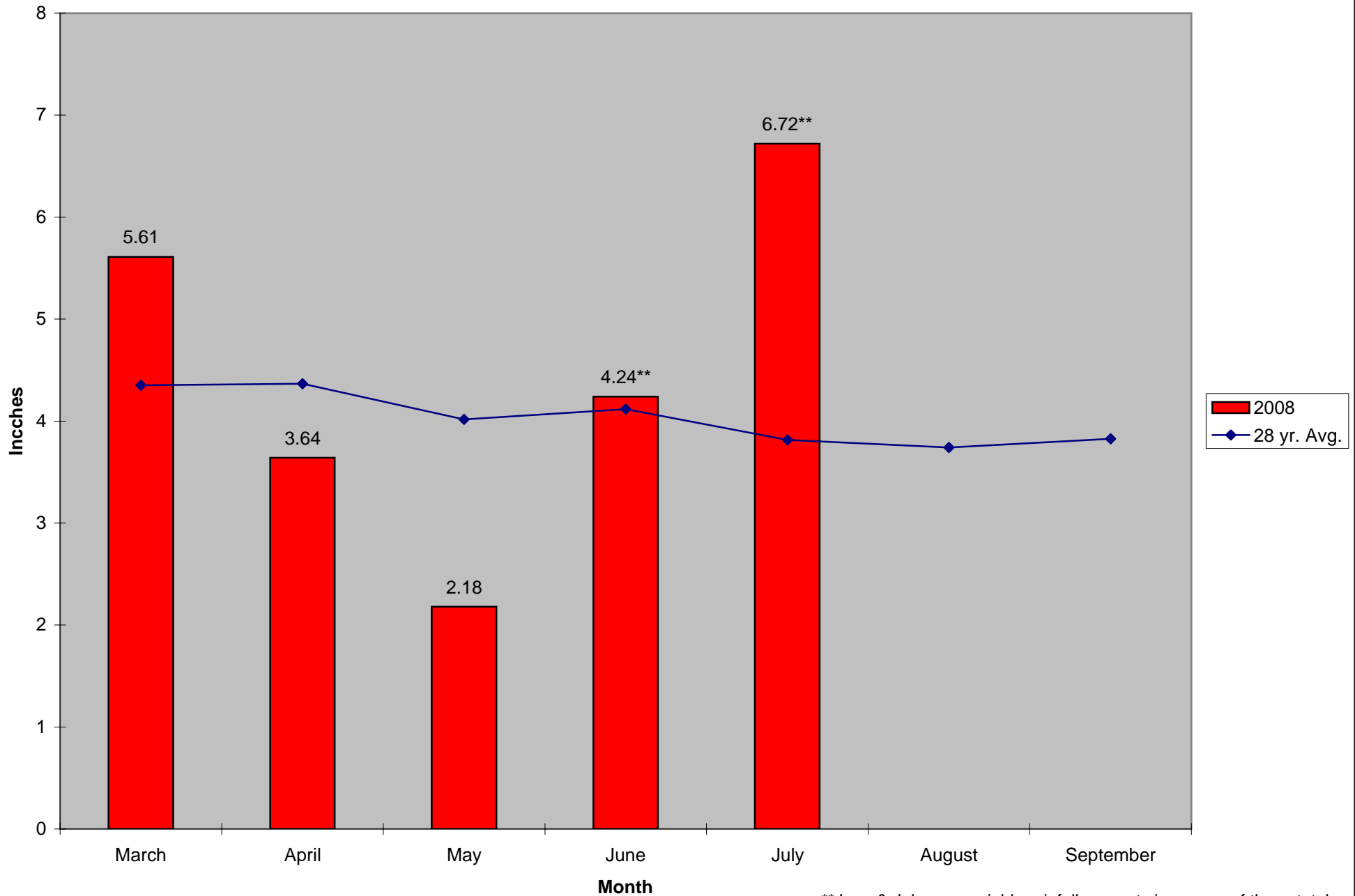
CMMCP Mosquito Summary-

Target Species	Δ From Last Week	Δ From Last Year	Predominant Trap Site(s)
<i>Aedes vexans</i>	-56.25%	+133.33%	Chelmsford, Wilmington
<i>Coquillettidia perturbans</i>	-23.04%	-21.14%	Stow, Westborough
<i>Culiseta melanura</i>	-8.06%	+90.00%	Holliston
<i>Ochlerotatus canadensis</i>	-36.67%	+90.00%	Millbury
<i>Culex</i> Species	-1.91%	-24.50%	Hopedale, Dracut, Shrewsbury
All Species	-15.53%	-17.02%	Stow, Westborough, Wilmington

The predominant mosquito species for the week was *Coquillettidia perturbans*.

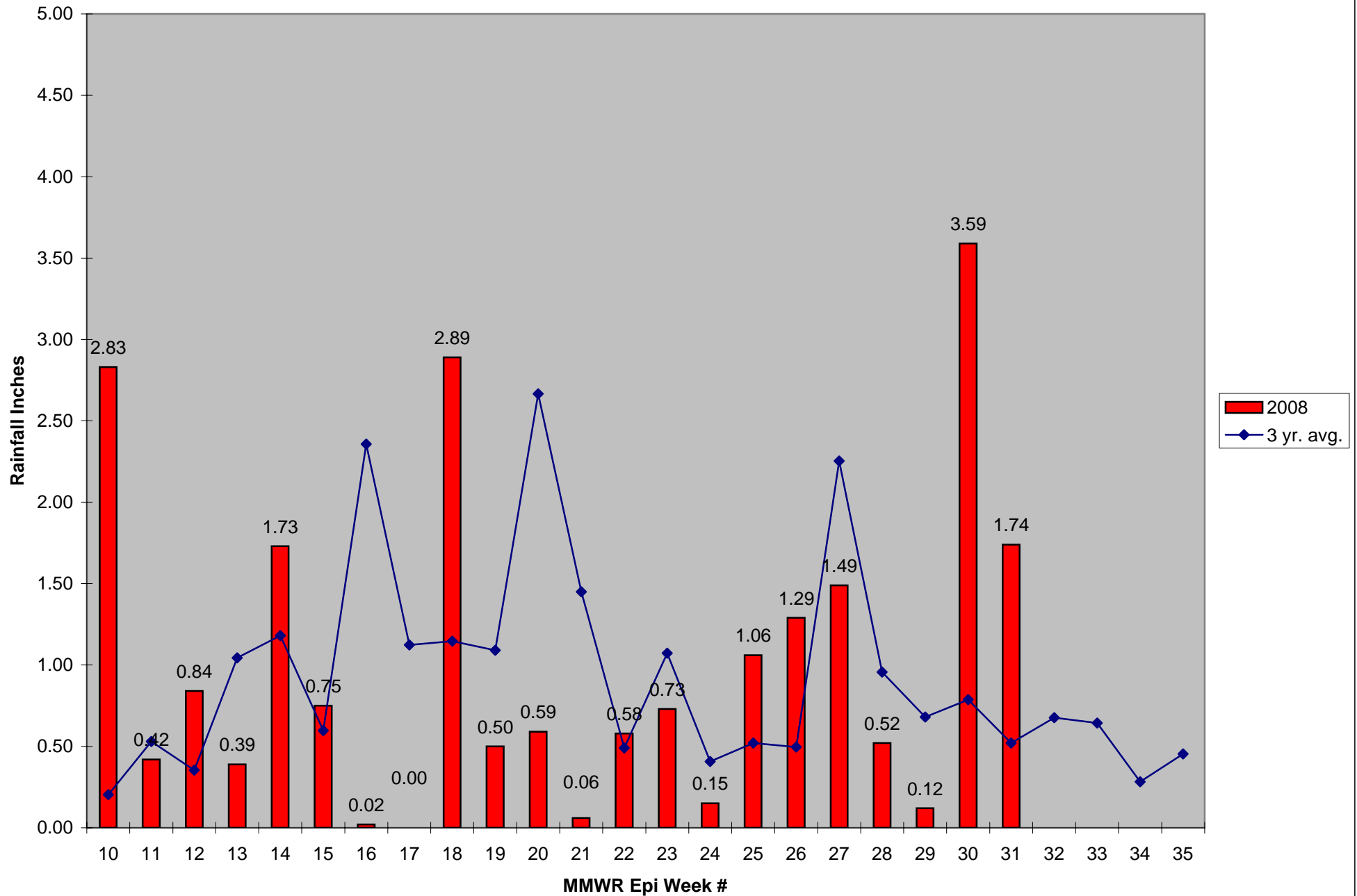
Service requests (409 total) dropped again 16% compared to the previous week, but are 58.5% above the 5 year average.

2008 Mass. Rainfall Data vs. 28 Year Average*



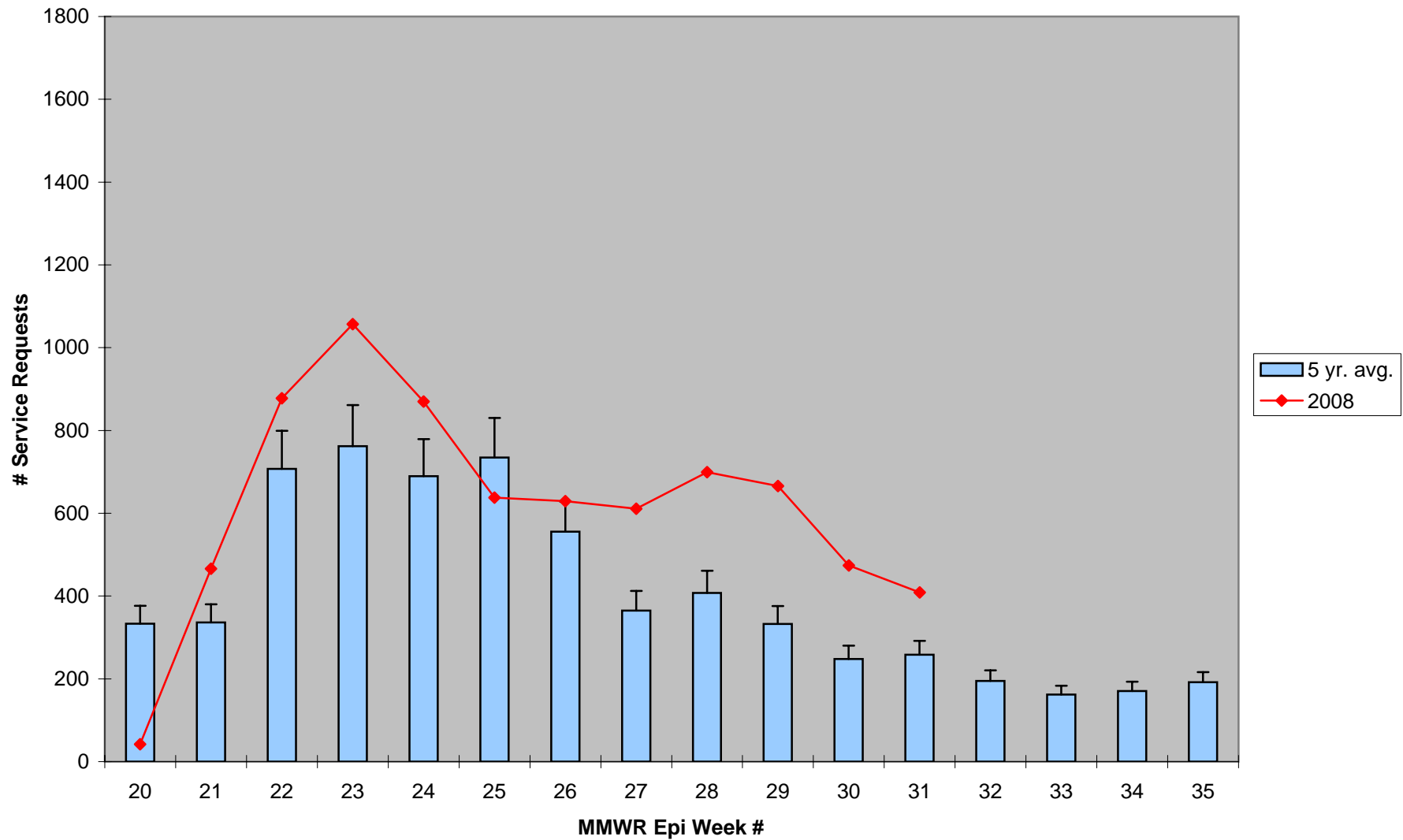
**June & July saw variable rainfall amounts in excess of these totals

2008 CMMCP Weekly Rainfall vs. 3 Year Average*



*Source: CMMCP Weather Station - Northborough, MA

ULV Service Request History Comparison 2003-2008



Error bars show approx. number of requests if we had 39 cities and towns over the 5 year average