

CMMCP WEEKLY SURVEILLANCE REPORT



EPI week #32
August 3-9, 2008

Frank Cornine, Field Biologist
Curtis Best, Staff Entomologist
Tim McGlinchy, Director of Operations
Tim Deschamps, Executive Director

Central Mass. Mosquito Control Project
Weekly Report- 8/3/08-8/9/08
MMWR Week #32

Cumulative Surveillance Summary

Target Species	<i>Ae. vex</i>	<i>Cq. per</i>	<i>Cs. mel</i>	<i>Oc. can</i>	<i>Culex</i>	All Species
No. Pools	62	281	133	140	406	1915
Total Specimens	465	13975	641	1200	7155	26528
No. Pools WNV +	0	0	0	0	1*	1*
No. Pools EEE +	0	0	0	0	0	0

*Pool of WNV+ *Culex pipiens/restuans* collected in Millbury on 7/1/08

Weather Summary (Northborough, MA): The weather for this particular week averaged only 67.93°F with a recorded high temperature of 81.6°F and a recorded low temperature of only 57.2°F. For this week there was also a total of 1.73 inches of rain observed. Compared to the previous week, it was approximately 4.57°F cooler on average, and rained only .01 inches less. After this week, the rainfall for the month of August has totaled 2.19 inches, while the month of July finished with 6.72 inches.

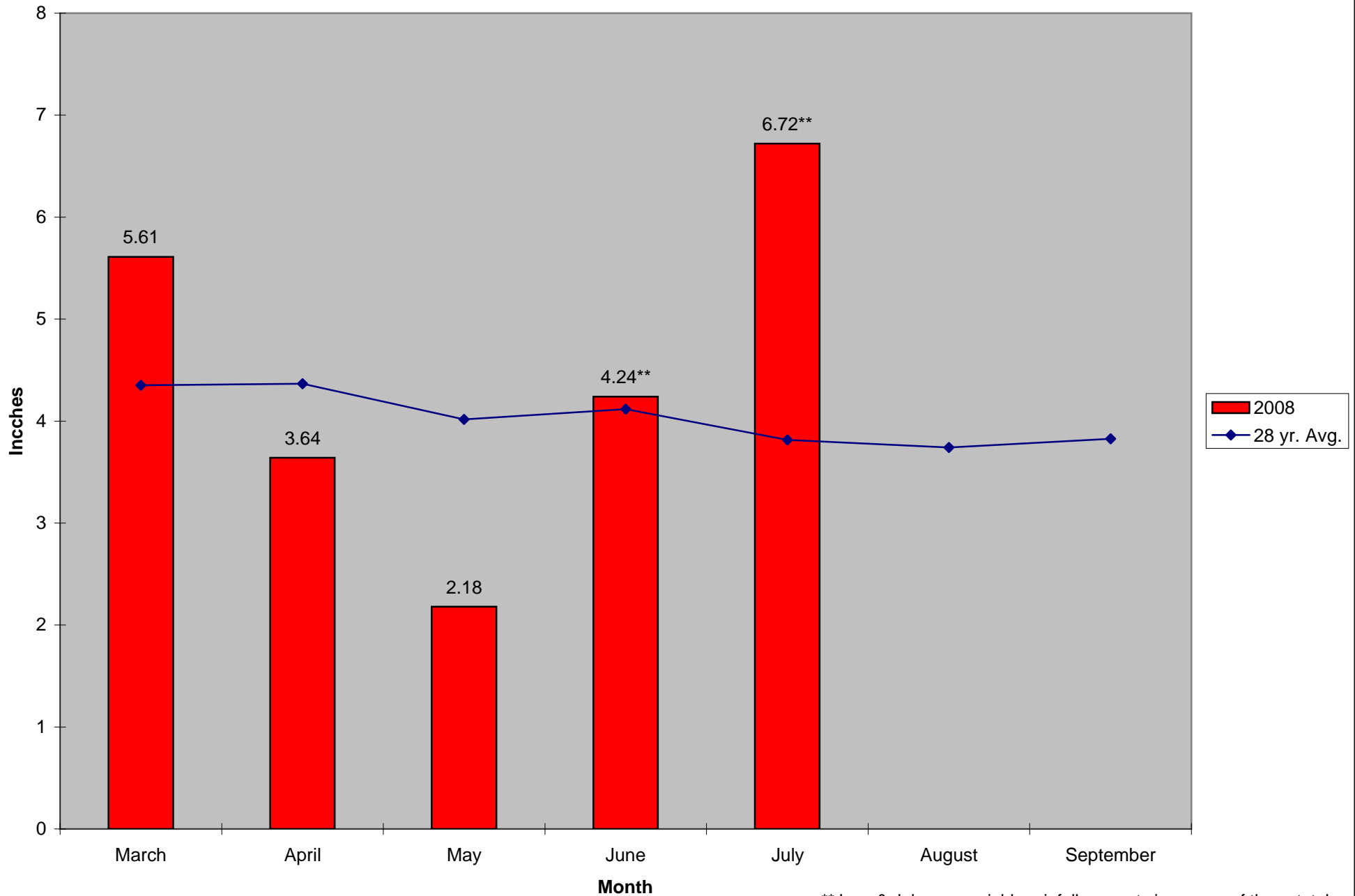
CMMCP Mosquito Summary-

Target Species	Δ From Last Week	Δ From Last Year	Predominant Trap Site(s)
<i>Aedes vexans</i>	+1271.4%	+ ∞	Wilmington, Ashland, Natick
<i>Coquillettidia perturbans</i>	-35.95%	+70.93%	Wilmington, Clinton, Billerica
<i>Culiseta melanura</i>	+49.12%	+254.17%	Boxborough, Holliston
<i>Ochlerotatus canadensis</i>	-84.21%	-25.00%	Boxborough, Hopkinton, Westford
<i>Culex</i> Species	+35.38%	+165.57%	Stow, Marlborough, Ashland
All Species	+0.04%	+122.53%	Wilmington, Stow, Ashland

The predominant mosquito species for the week was *Culex pipiens/restuans*.

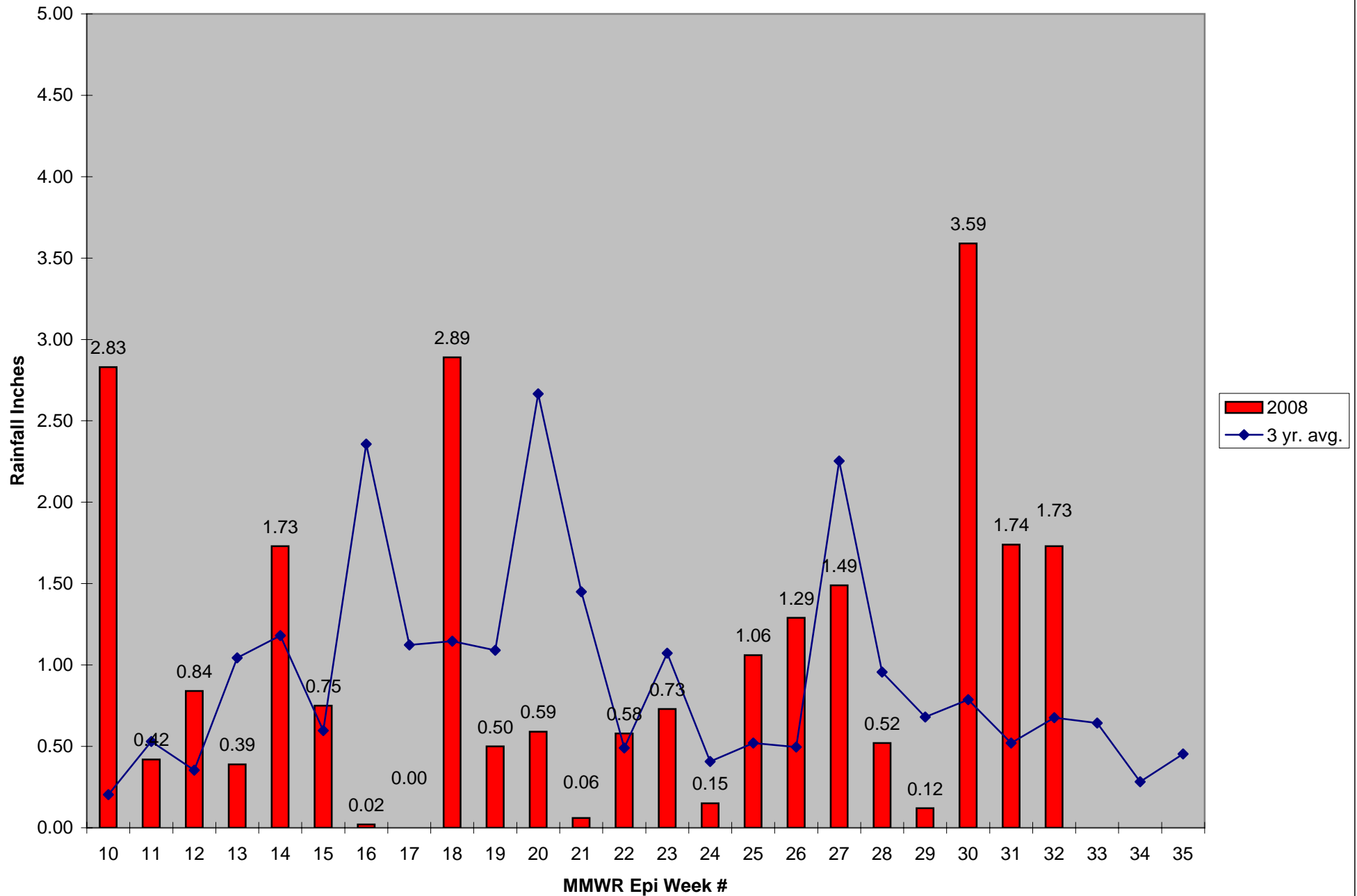
Service requests declined again from the previous week by 20%, but remain 74.5% higher than the five year average.

2008 Mass. Rainfall Data vs. 28 Year Average*



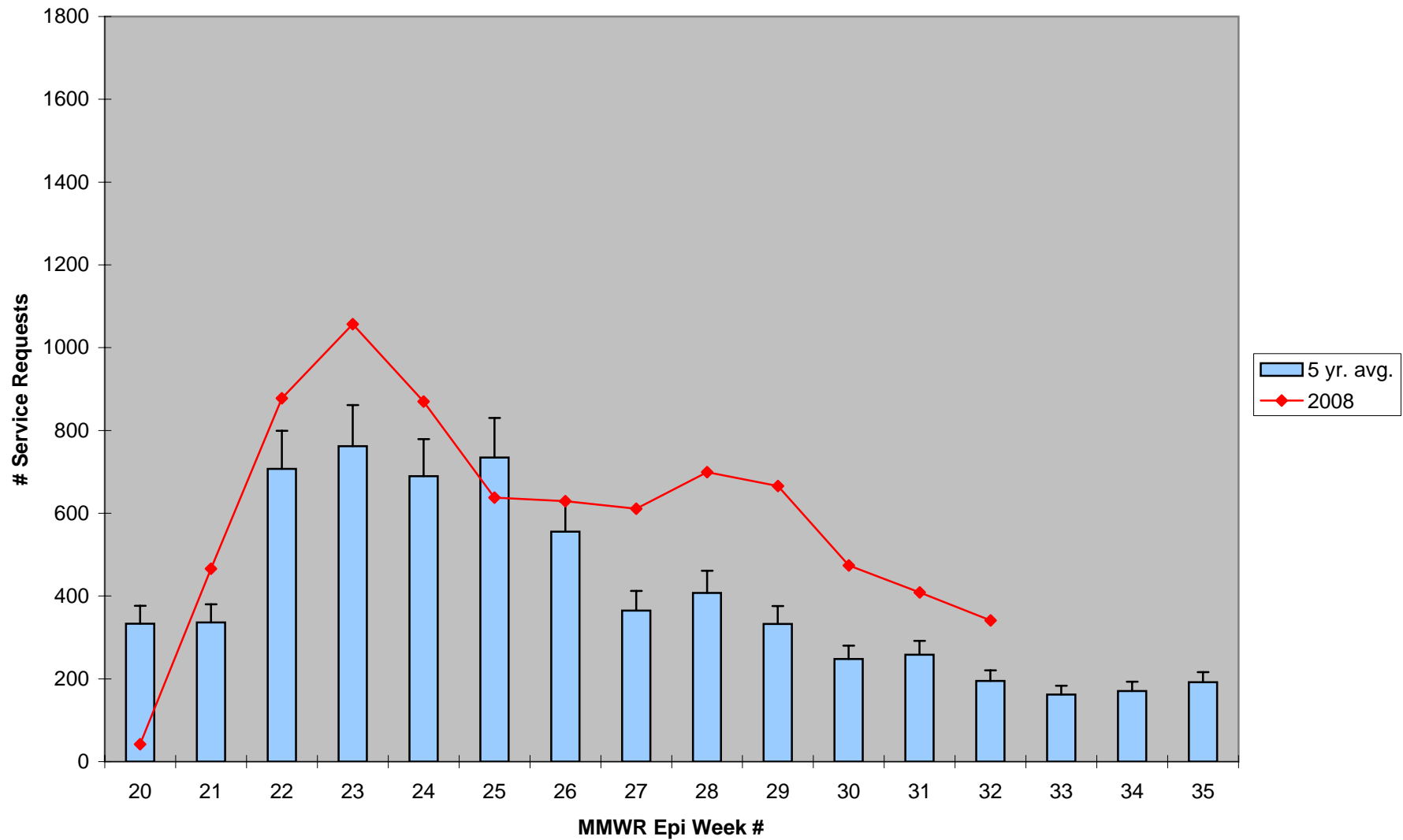
**June & July saw variable rainfall amounts in excess of these totals

2008 CMMCP Weekly Rainfall vs. 3 Year Average*



*Source: CMMCP Weather Station - Northborough, MA

ULV Service Request History Comparison 2003-2008



Error bars show approx. number of requests if we had 39 cities and towns over the 5 year average