

CMMCP WEEKLY SURVEILLANCE REPORT



EPI week #33
August 10-16, 2008

Frank Cornine, *Field Biologist*
Curtis Best, *Staff Entomologist*
Tim McGlinchy, *Director of Operations*
Tim Deschamps, *Executive Director*

Central Mass. Mosquito Control Project
Weekly Report- 8/10/08-8/16/08
MMWR Epi Week #33

Cumulative Surveillance Summary

Target Species	<i>Ae. vex</i>	<i>Cq. per</i>	<i>Cs. mel</i>	<i>Oc. can</i>	<i>Culex</i>	All Species
No. Pools	84	317	153	154	454	2193
Total Specimens	709	14690	804	1281	8249	29412
No. Pools WNV +	0	0	0	0	1*	1*
No. Pools EEE +	0	0	0	0	0	0

*Pool of WNV+ *Culex pipiens/restuans* collected in Millbury on 7/1/08

Weather Summary (Northborough, MA): The weather for this particular week averaged only 66.59°F with a recorded high temperature of 82.6°F and a recorded low temperature of only 56.2°F. For this week there was also a total of 0.76 inches of rain observed. Compared to the previous week, it was approximately 1.34°F cooler on average, and rained .97 inches less. After this week, the rainfall for the month of August has totaled 2.95 inches, while the month of July finished with 6.72 inches.

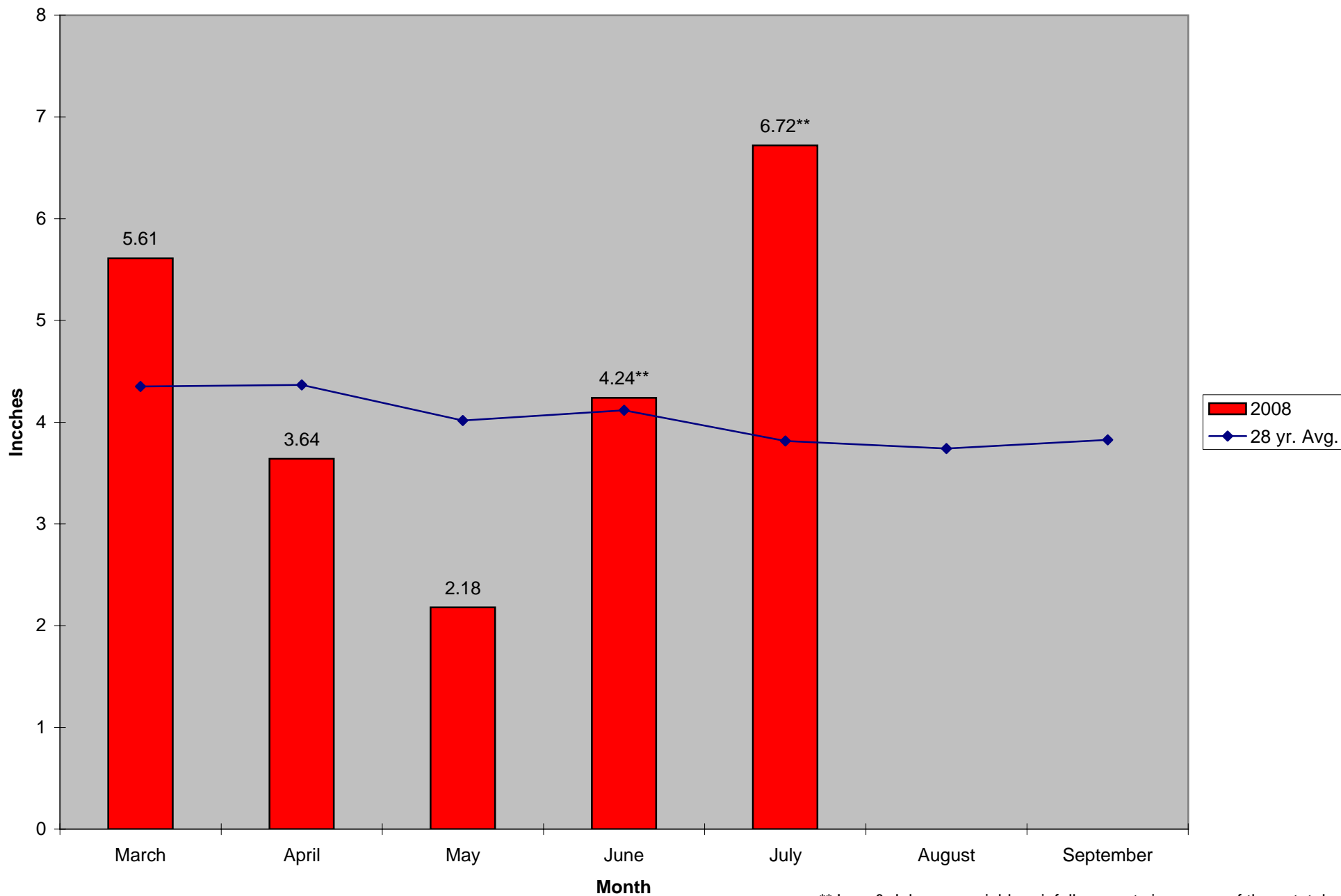
CMMCP Mosquito Summary-

Target Species	Δ From Last Week	Δ From Last Year	Predominant Trap Site(s)
<i>Aedes vexans</i>	+27.08%	+3385.71%	Webster, Millbury, Westborough
<i>Coquillettidia perturbans</i>	-14.98%	-25.05%	Ashland, Westborough, Webster
<i>Culiseta melanura</i>	+91.76%	+1153.85%	Millbury, Westborough, Hopkinton
<i>Ochlerotatus canadensis</i>	+2600.00%	+3950.00%	Millbury
<i>Culex</i> Species	+12.55%	+100.37%	Milford, Shrewsbury, Westborough
All Species	+22.15%	+62.85%	Ashland, Westborough, Millbury

The predominant mosquito species for the week was *Culex pipiens/restuans*.

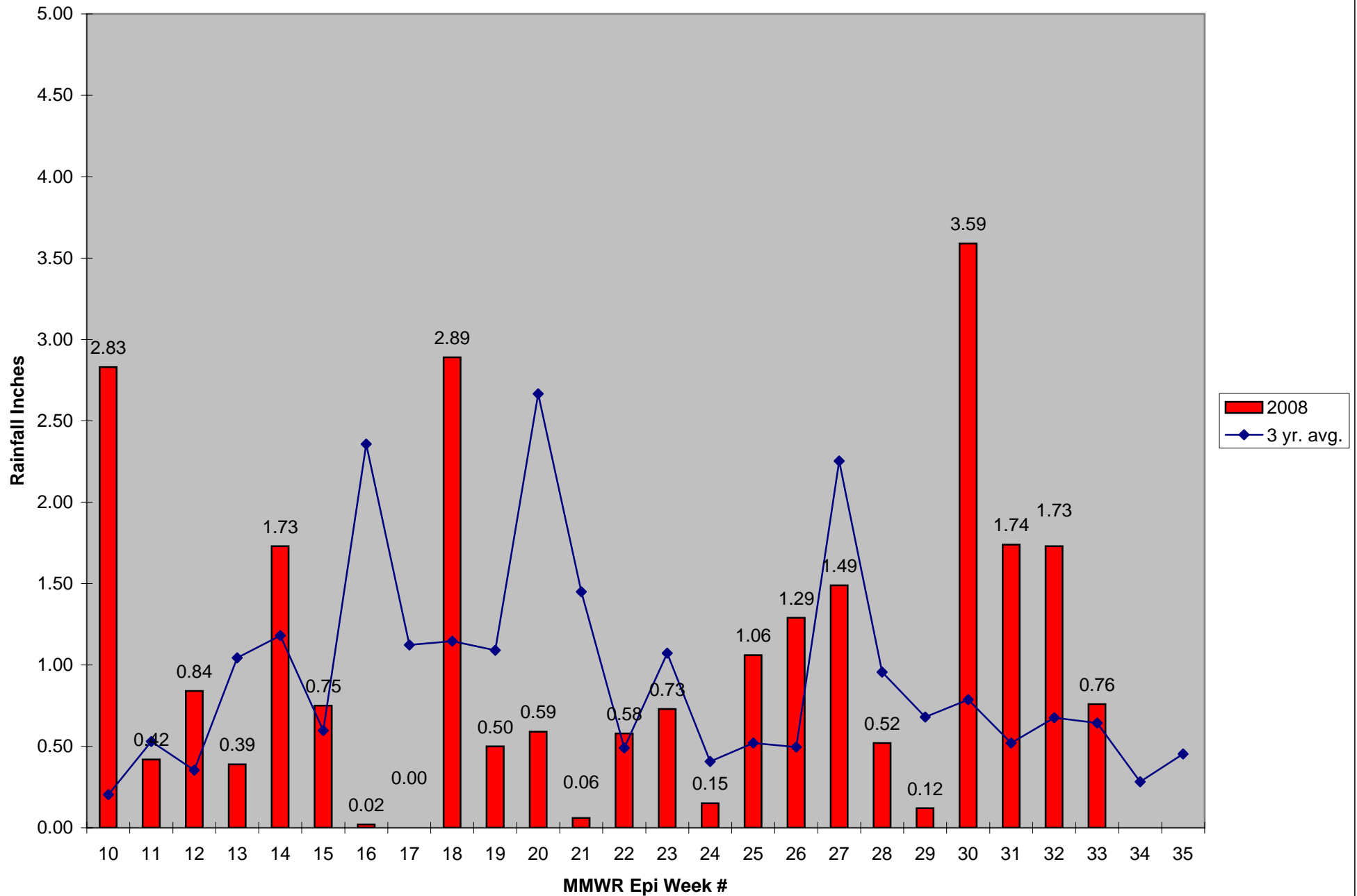
Service requests rose by 50% after a 3 week decline, and remain 315% higher than the five year average.

2008 Mass. Rainfall Data vs. 28 Year Average*



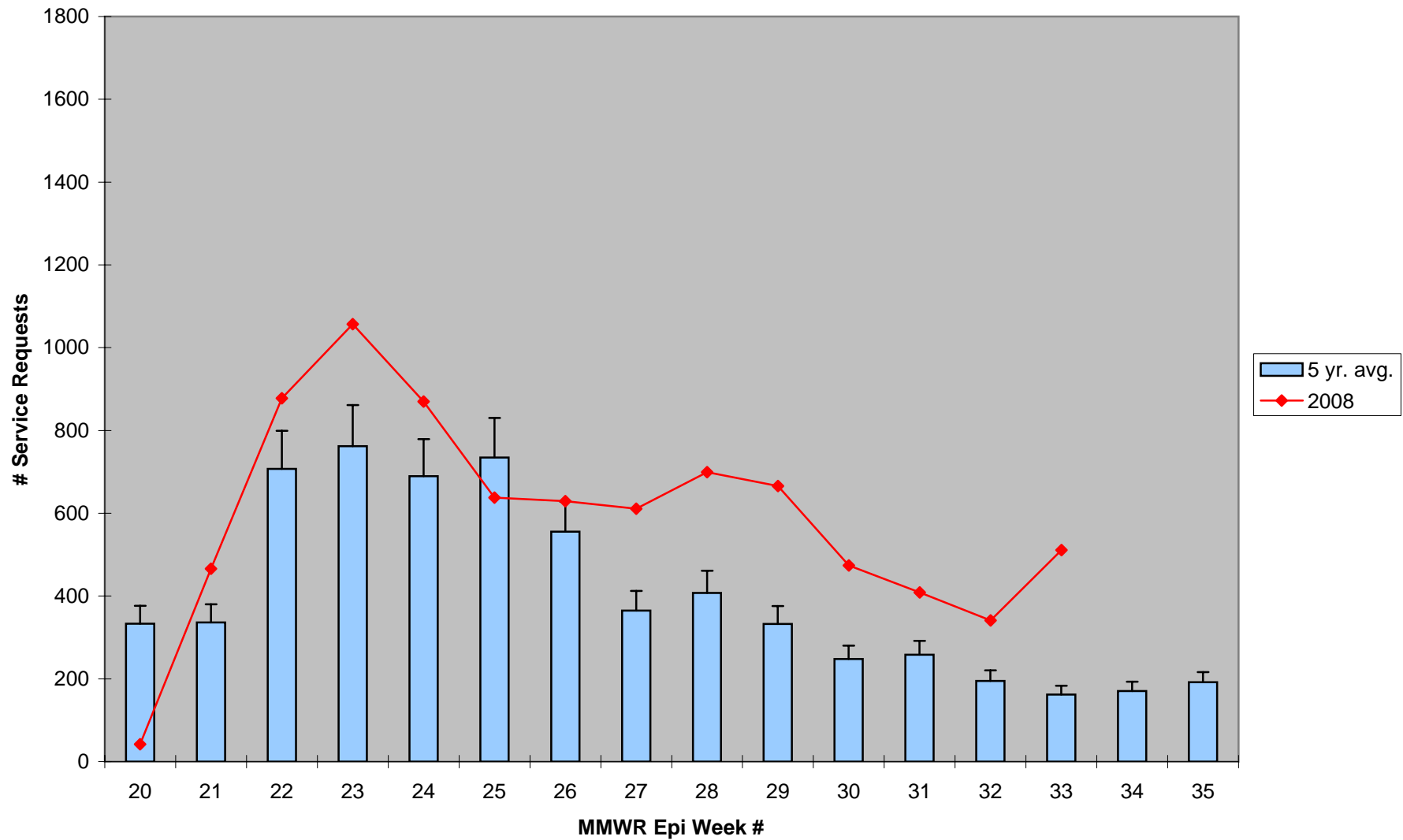
**June & July saw variable rainfall amounts in excess of these totals

2008 CMMCP Weekly Rainfall vs. 3 Year Average*



*Source: CMMCP Weather Station - Northborough, MA

ULV Service Request History Comparison 2003-2008



Error bars show approx. number of requests if we had 39 cities and towns over the 5 year average