

# CMMCP WEEKLY SURVEILLANCE REPORT



**EPI week #34**  
**August 17-23, 2008**

**Frank Cornine, *Field Biologist***  
**Curtis Best, *Staff Entomologist***  
**Tim McGlinchy, *Director of Operations***  
**Tim Deschamps, *Executive Director***

**Central Mass. Mosquito Control Project**  
**Weekly Report- 8/17/08-8/23/08**  
**MMWR Epi Week #34**

**Cumulative Surveillance Summary**

Target Species	<i>Ae. vex</i>	<i>Cq. per</i>	<i>Cs. mel</i>	<i>Oc. can</i>	<i>Culex</i>	All Species
No. Pools	98	340	162	167	490	2394
Total Specimens	764	15092	840	1305	8904	30837
No. Pools WNV +	0	0	0	0	2*	2*
No. Pools EEE +	0	0	0	0	0	0

\*Pool of WNV+ *Culex pipiens/restuans* collected in Millbury on 7/1/08

\*Pool of WNV+ *Culex pipiens/restuans* collected in Clinton on 8/13/08

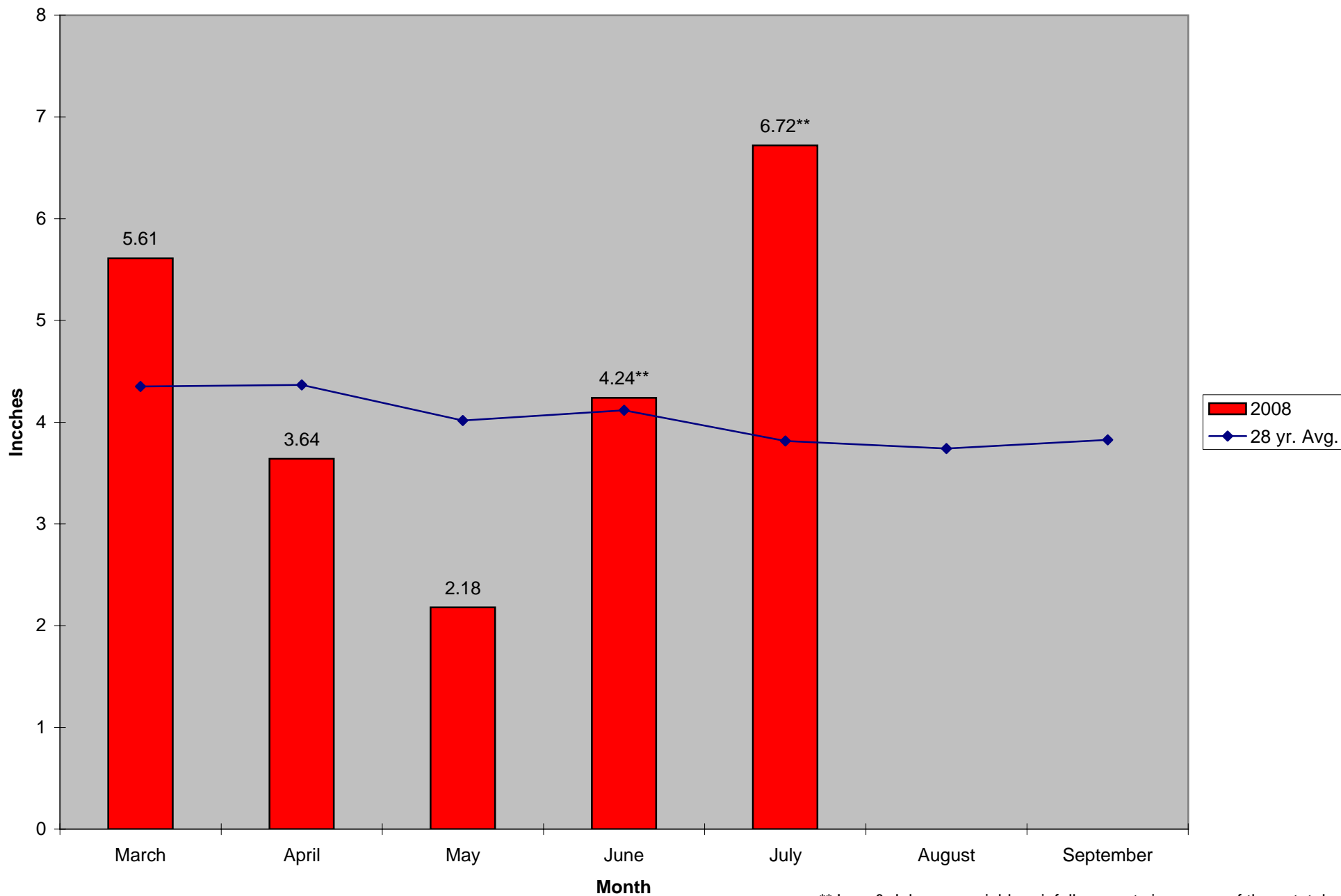
**Weather Summary (Northborough, MA):** The weather for this particular week averaged only 68.57°F with a recorded high temperature of 86.5°F and a recorded low temperature of only 48.6°F. For this week there was also a total of only 0.03 inches of rain observed. Compared to the previous week, it was approximately 1.98°F cooler on average, and rained .73 inches less. After this week, the rainfall for the month of August has totaled 2.98 inches, while the month of July finished with 6.72 inches.

**CMMCP Mosquito Summary-**

Target Species	Δ From Last Week	Δ From Last Year	Predominant Trap Site(s)
<i>Aedes vexans</i>	-77.46%	+1275.0%	Stow, Ayer
<i>Coquillettidia perturbans</i>	-43.78%	+142.17%	Ayer
<i>Culiseta melanura</i>	-77.91%	+157.14%	Westborough
<i>Ochlerotatus canadensis</i>	-70.37%	+2400.0%	Natick, Holliston, Westford, Westborough
<i>Culex</i> Species	-40.13%	+139.93%	Dracut, Westborough, Stow
All Species	-50.59%	+97.10%	Ayer, Hopkinton, Westborough, Stow

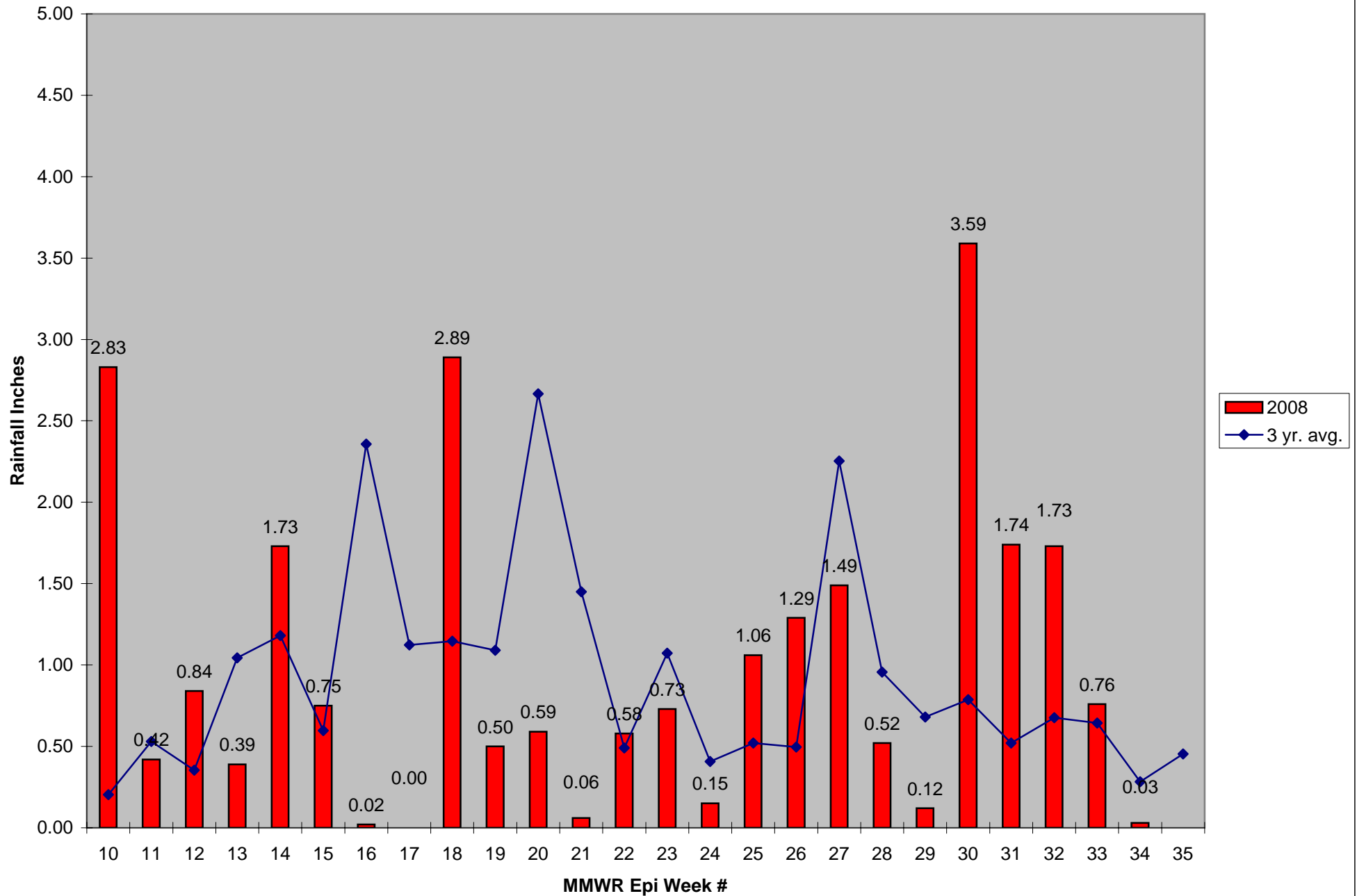
The predominant mosquito species for the week was *Culex pipiens/restuans*. Service requests rose by 15% over last week, and remain 345% higher than the five year average.

### 2008 Mass. Rainfall Data vs. 28 Year Average\*



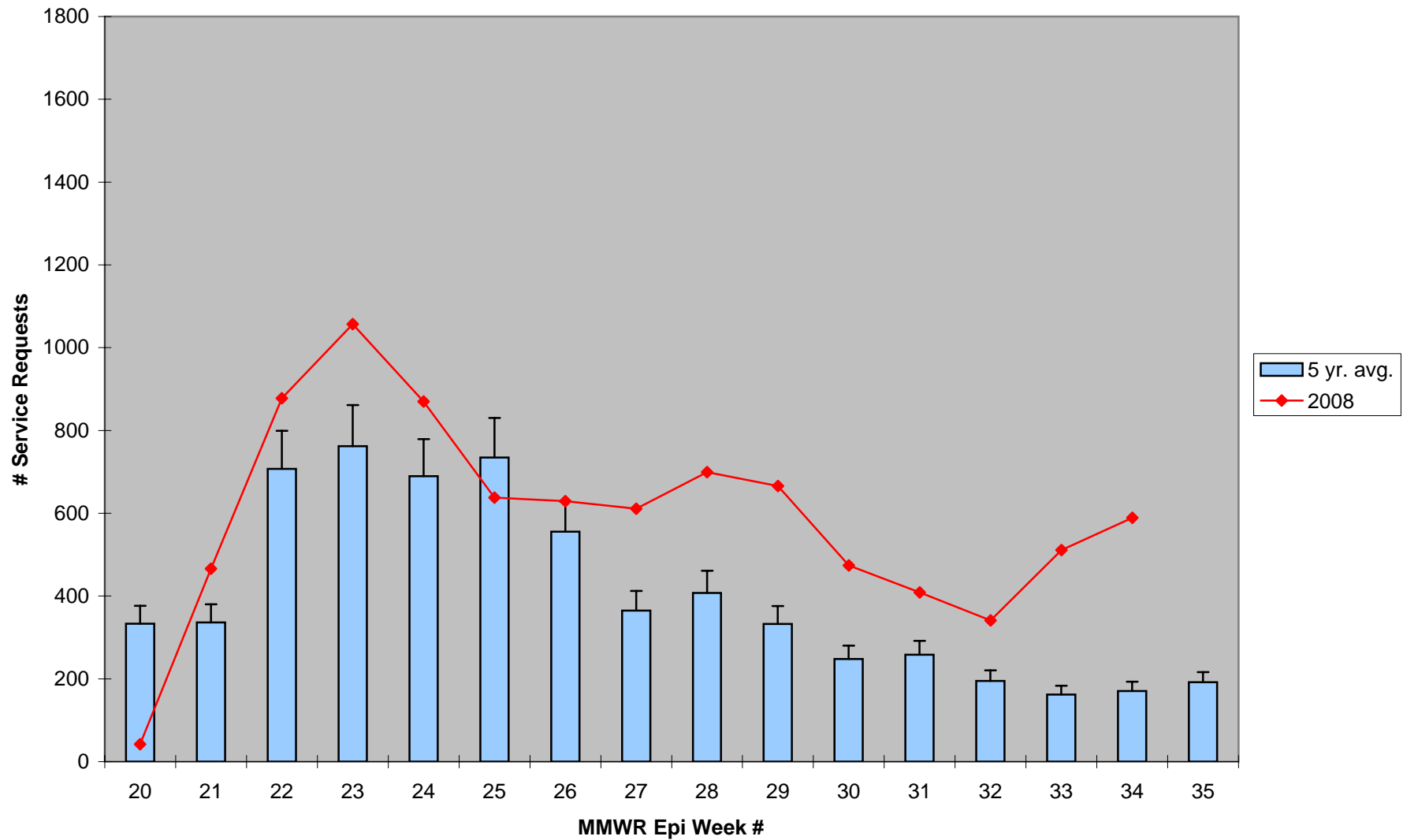
\*\*June & July saw variable rainfall amounts in excess of these totals

2008 CMMCP Weekly Rainfall vs. 3 Year Average\*



\*Source: CMMCP Weather Station - Northborough, MA

### ULV Service Request History Comparison 2003-2008



Error bars show approx. number of requests if we had 39 cities and towns over the 5 year average