

CMMCP WEEKLY SURVEILLANCE REPORT



EPI week #35
August 24-30, 2008

Frank Cornine, *Field Biologist*
Curtis Best, *Staff Entomologist*
Tim McGlinchy, *Director of Operations*
Tim Deschamps, *Executive Director*

Central Mass. Mosquito Control Project
Weekly Report- 8/24/08-8/30/08
MMWR Epi Week #35

Cumulative Surveillance Summary

Target Species	<i>Ae. vex</i>	<i>Cq. per</i>	<i>Cs. mel</i>	<i>Oc. can</i>	<i>Culex</i>	All Species
No. Pools	117	364	170	178	534	2601
Total Specimens	835	15269	862	1342	9772	32343
No. Pools WNV +	0	0	0	0	2*	2*
No. Pools EEE +	0	0	0	0	0	0

*Pool of WNV+ *Culex pipiens/restuans* collected in Millbury on 7/1/08

*Pool of WNV+ *Culex pipiens/restuans* collected in Clinton on 8/13/08

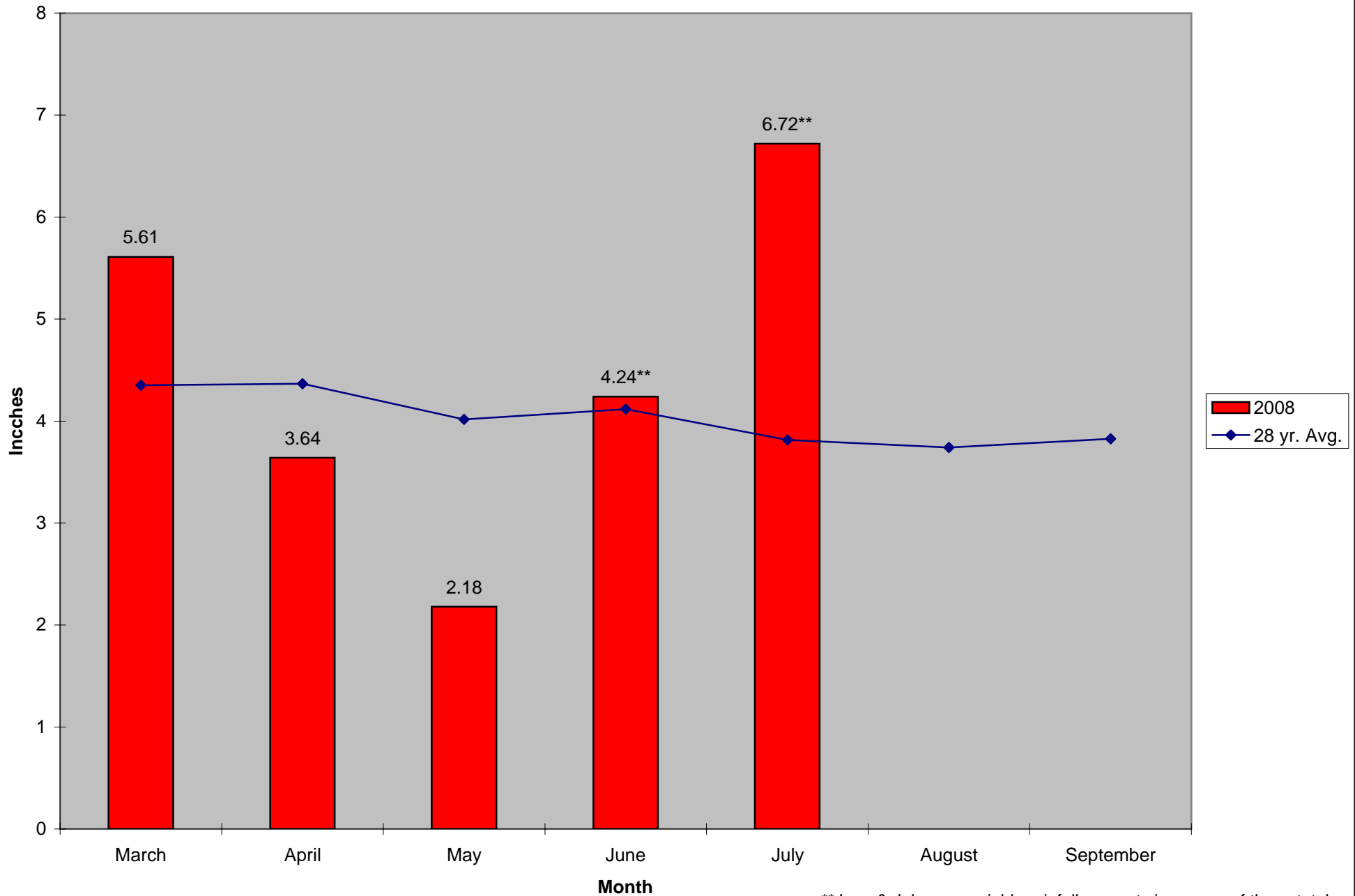
Weather Summary (Northborough, MA): The weather for this particular week averaged only 66.91°F with a recorded high temperature of 82.2°F and a recorded low temperature of only 48.8°F. For this week there was also a total of only 0.06 inches of rain observed. Compared to the previous week, it was approximately 1.66°F cooler on average, and rained .03 inches more. After this week, the rainfall for the month of August has totaled 3.04 inches, while the month of July finished with 6.72 inches.

CMMCP Mosquito Summary-

Target Species	Δ From Last Week	Δ From Last Year	Predominant Trap Site(s)
<i>Aedes vexans</i>	+29.09%	~ +7000%	Boxborough
<i>Coquillettidia perturbans</i>	-55.97%	+19.59%	Webster, Westborough, Natick
<i>Culiseta melanura</i>	-38.89%	-12.00%	Boxborough, Holliston
<i>Ochlerotatus canadensis</i>	+54.17%	~ +3600%	Boxborough, Millbury
<i>Culex</i> Species	+32.52%	+68.54%	Hopedale, Westborough, Shrewsbury
All Species	+5.68%	+72.31%	Hopedale, Westborough

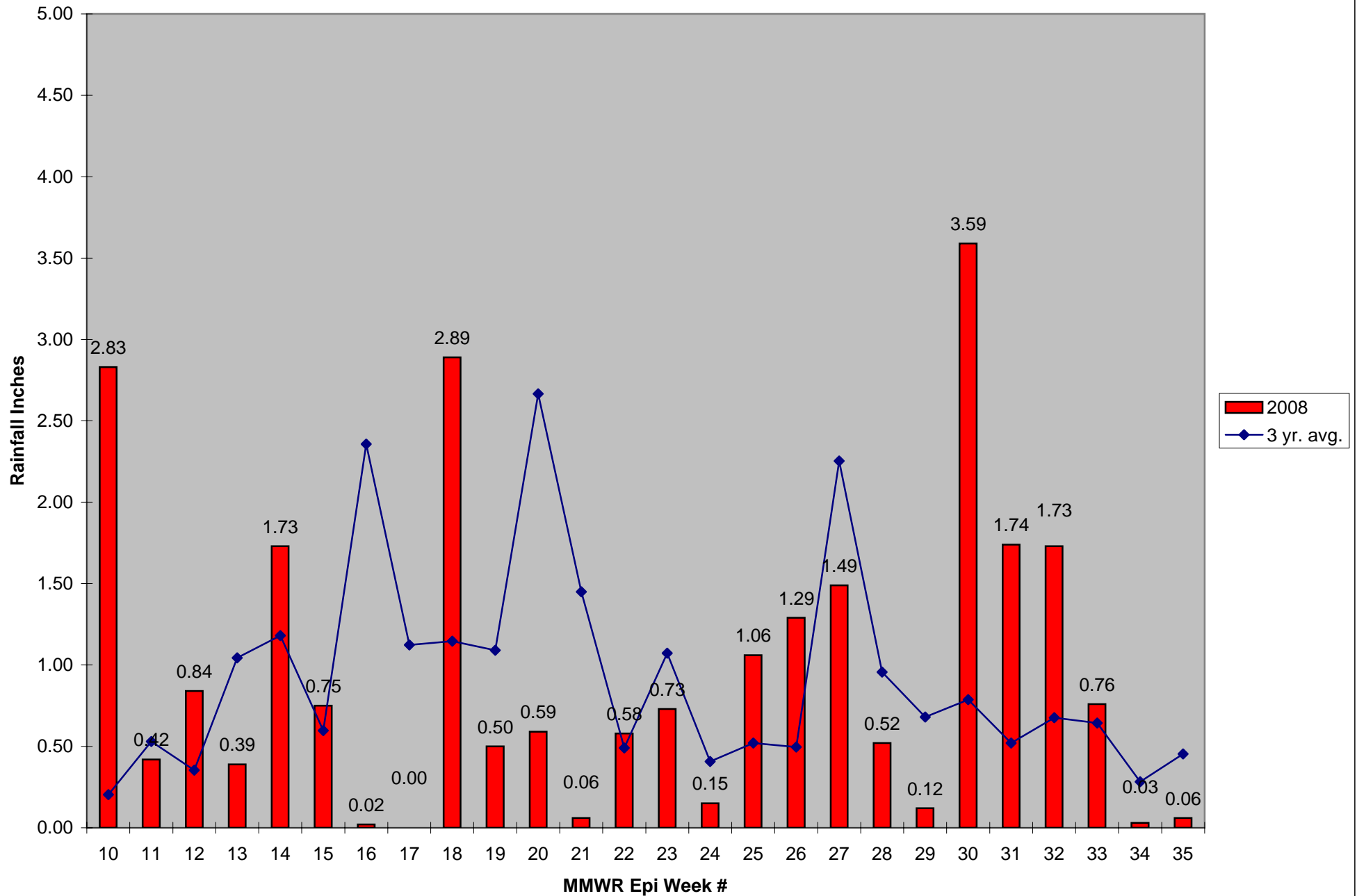
The predominant mosquito species for the week was *Culex pipiens/restuans*, with a 32% increase from week 34. *Ae.vexans* numbers have spiked nearly 30% after dropping over 75% last week, with *Oc. canadensis* showing similar numbers. With two weeks of below average rainfall floodwater species are expected to continue to diminish. *Cq. perturbans* numbers have continued a steady decline along with *Cs. melanura*. Service calls declined by 39% from week 34 but are still 221% higher than the 5 year average.

2008 Mass. Rainfall Data vs. 28 Year Average*



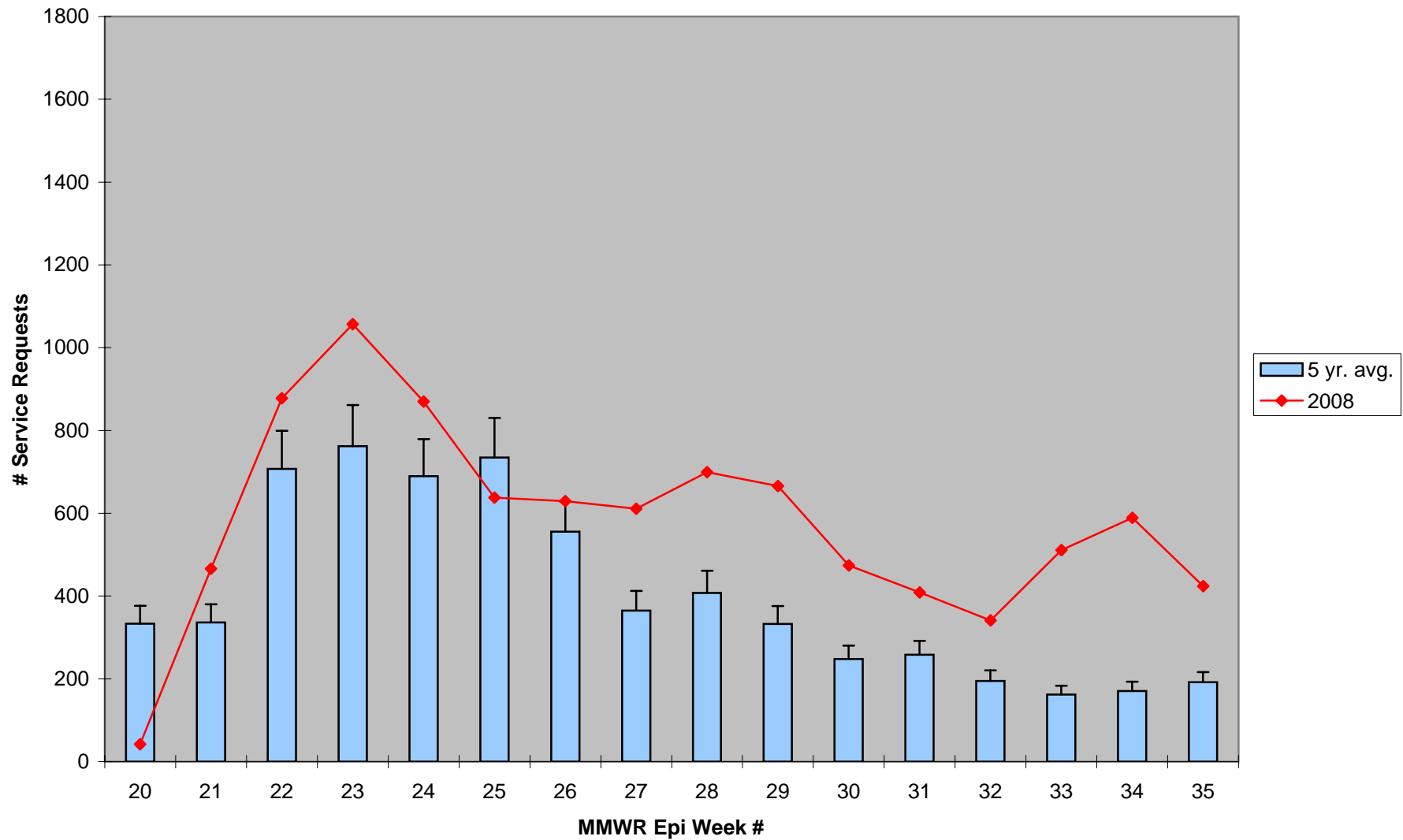
**June & July saw variable rainfall amounts in excess of these totals

2008 CMMCP Weekly Rainfall vs. 3 Year Average*



*Source: CMMCP Weather Station - Northborough, MA

ULV Service Request History Comparison 2003-2008



Error bars show approx. number of requests if we had 39 cities and towns over the 5 year average