

CMMCP WEEKLY SURVEILLANCE REPORT



EPI week #36
August 31 - Sept. 6, 2008

Frank Cornine, *Field Biologist*
Curtis Best, *Staff Entomologist*
Tim McGlinchy, *Director of Operations*
Tim Deschamps, *Executive Director*

Central Mass. Mosquito Control Project
Weekly Report- 8/31/08-9/6/08
MMWR Week #36

Cumulative Surveillance Summary

Target Species	<i>Ae. vex</i>	<i>Cq. per</i>	<i>Cs. mel</i>	<i>Oc. can</i>	<i>Culex</i>	All Species
No. Pools	137	385	192	190	567	2824
Total Specimens	907	15424	962	1377	10471	33819
No. Pools WNV +	0	0	0	0	4*	4*
No. Pools EEE +	0	0	0	0	0	0

*Pool of WNV+ *Culex pipiens/restuans* collected in Millbury on 7/1/08

*Pool of WNV+ *Culex pipiens/restuans* collected in Clinton on 8/13/08

*Pool of WNV+ *Culex pipiens/restuans* collected in Auburn on 9/4/08

*Pool of WNV+ *Culex pipiens/restuans* collected in Shrewsbury on 9/4/08

Weather Summary (Northborough, MA): The weather for this particular week averaged only 70.51°F with a recorded high temperature of 88.0°F and a recorded low temperature of only 53.8°F. For this week there was also a total of only 3.81 inches of rain observed. Compared to the previous week, it was approximately 3.6°F warmer on average, and rained 3.75 inches more. After this week, the rainfall for the month of September has totaled 3.81 inches, while the month of August finished with 4.08 inches.

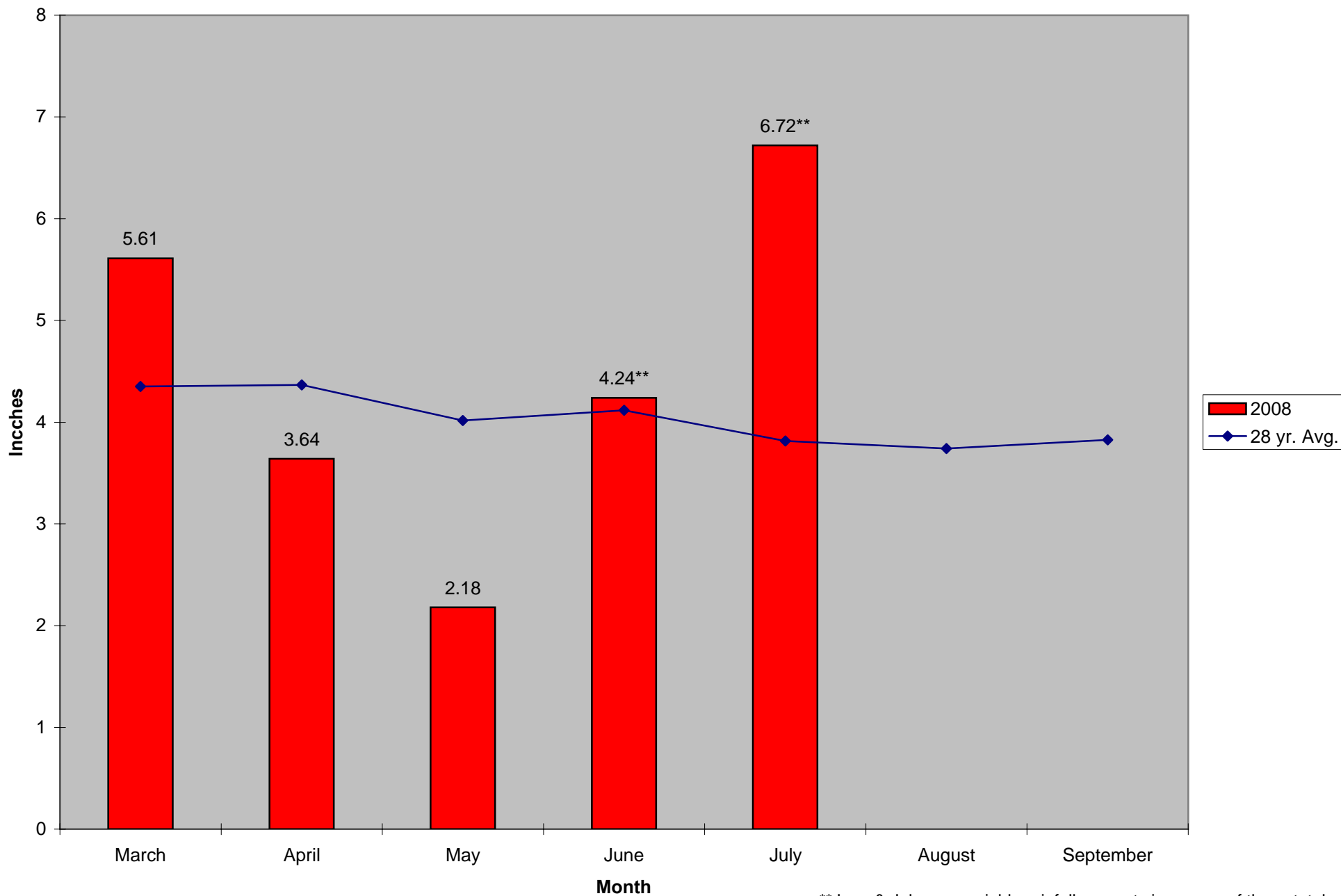
CMMCP Mosquito Summary-

Target Species	Δ From Last Week	Δ From Last Year	Predominant Trap Site(s)
----------------	---------------------	---------------------	--------------------------

<i>Aedes vexans</i>	+80.00%	+227.3%	Southborough
<i>Coquillettidia perturbans</i>	+115.3%	+115.3%	Boxborough, Westborough
<i>Culiseta melanura</i>	+614.3%	+733.3%	Boxborough, Berlin
<i>Ochlerotatus canadensis</i>	+94.44%	~ 3600%	Boxborough, Berlin, Westford
<i>Culex</i> Species	+12.92%	+169.9%	Hopedale, Clinton
All Species	+58.03%	+171.3%	Hopedale, Boxborough

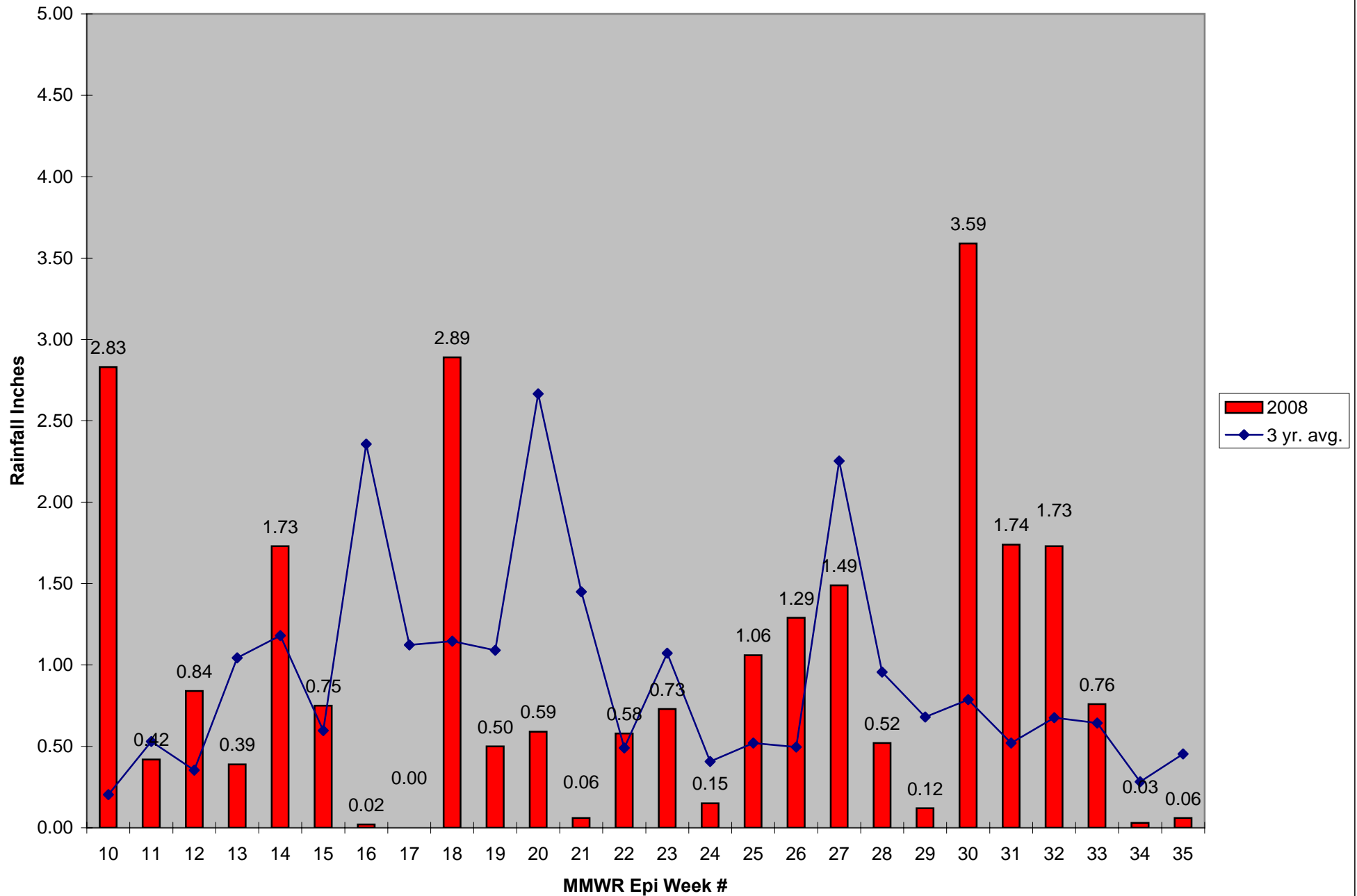
The predominant mosquito species for the week was *Culex pipiens/restuans*.

2008 Mass. Rainfall Data vs. 28 Year Average*



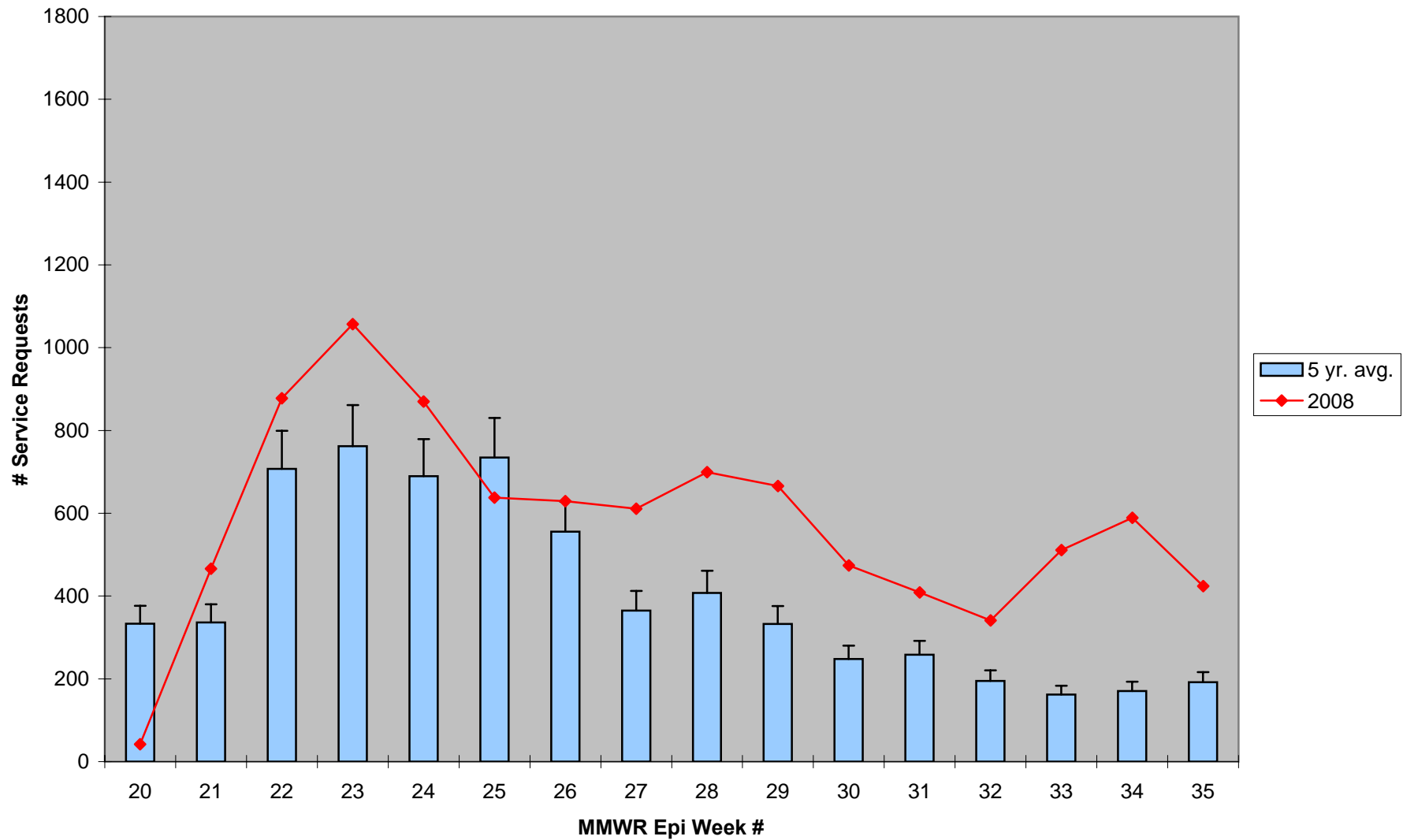
**June & July saw variable rainfall amounts in excess of these totals

2008 CMMCP Weekly Rainfall vs. 3 Year Average*



*Source: CMMCP Weather Station - Northborough, MA

ULV Service Request History Comparison 2003-2008



Error bars show approx. number of requests if we had 39 cities and towns over the 5 year average