

CMMCP WEEKLY SURVEILLANCE REPORT



EPI week #37
Sept. 7-13, 2008

Frank Cornine, *Field Biologist*
Curtis Best, *Staff Entomologist*
Tim McGlinchy, *Director of Operations*
Tim Deschamps, *Executive Director*

Central Mass. Mosquito Control Project
Weekly Report- 9/7/08-9/13/08
MMWR Week #37

Cumulative Surveillance Summary

Target Species	<i>Ae. vex</i>	<i>Cq. per</i>	<i>Cs. mel</i>	<i>Oc. can</i>	<i>Culex</i>	All Species
No. Pools	157	405	218	204	613	3079
Total Specimens	967	15567	1171	1422	11421	35650
No. Pools WNV +	0	0	1*	0	5*	6*
No. Pools EEE +	0	0	0	0	0	0

*Pool of WNV+ *Culex pipiens/restuans* collected in Millbury on 7/1/08

*Pool of WNV+ *Culex pipiens/restuans* collected in Clinton on 8/13/08

*Pool of WNV+ *Culex pipiens/restuans* collected in Auburn on 9/4/08

*Pool of WNV+ *Culex pipiens/restuans* collected in Shrewsbury on 9/4/08

*Pool of WNV+ *Culex pipiens/restuans* collected in Berlin on 9/10/08

*Pool of WNV+ *Culiseta melanura* collected in Berlin on 9/10/08

Cumulative Surveillance Summary – Bird/Mammal/Other

Species	Date	Town	County	Virus
Crow	8/5/08	Natick	Middlesex	WNV
Blue Jay	8/6/08	Dracut	Middlesex	WNV
Crow	8/13/08	Auburn	Worcester	WNV
Crow	9/8/08	Chelmsford	Middlesex	WNV
Crow	9/15/08	Blackstone	Worcester	WNV

Weather Summary (Northborough, MA): The weather for this particular week averaged only 63.71°F with a recorded high temperature of 80.7°F and a recorded low temperature of only 43.6°F. For this week there was also a total of only 1.28 inches of rain observed. Compared to the previous week, it was approximately 6.8°F cooler on average, and rained 2.53 inches less. After this week, the rainfall for the month of September has totaled 5.09 inches, while the month of August finished with 4.08 inches.

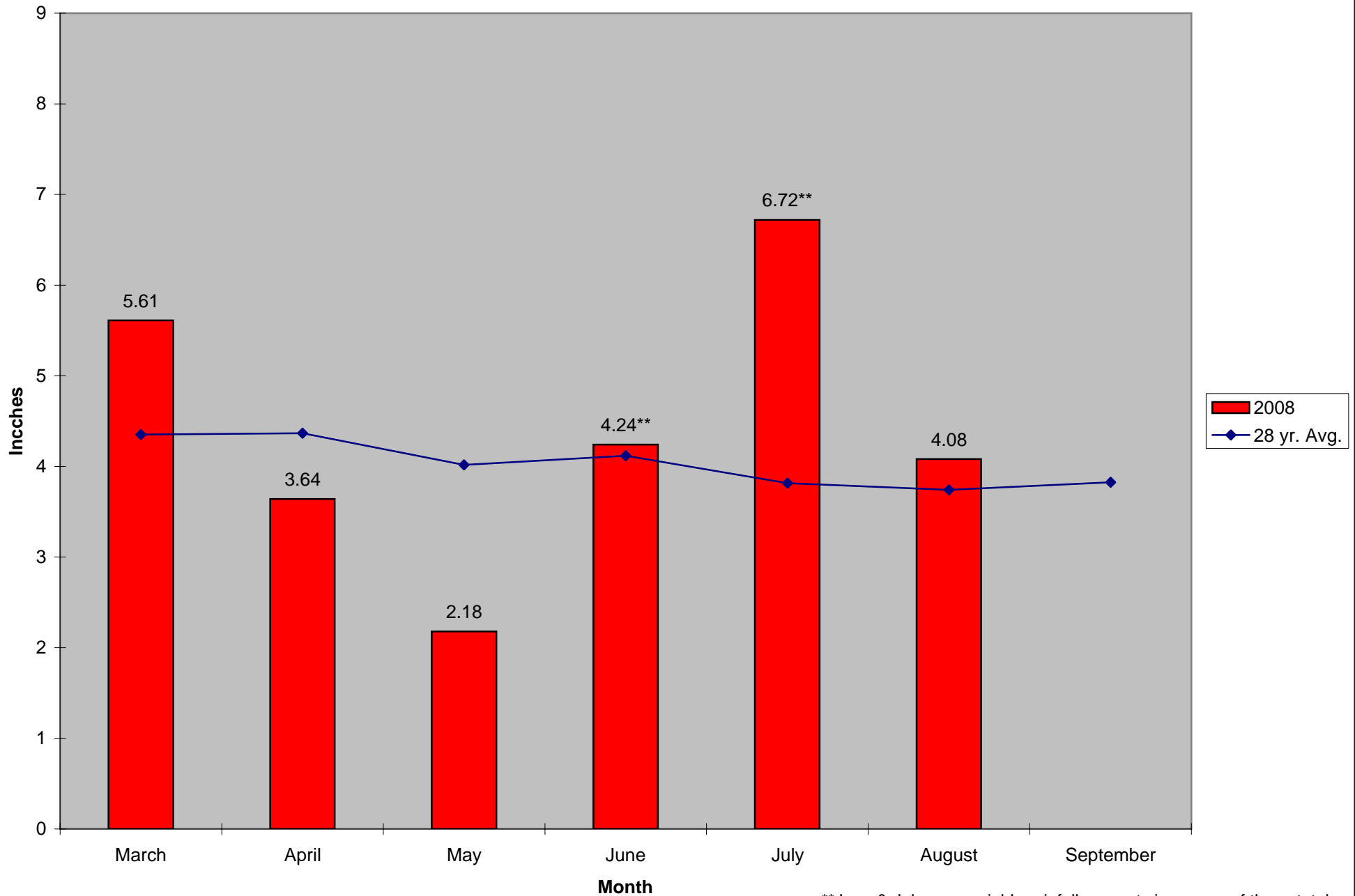
CMMCP Mosquito Summary-

Target Species	Δ From Last Week	Δ From Last Year	Predominant Trap Site(s)
----------------	---------------------	---------------------	--------------------------

<i>Aedes vexans</i>	-38.89%	~ +6000%	Hopkinton, Dracut
<i>Coquillettidia perturbans</i>	-30.32%	+217.8%	Webster, Dracut
<i>Culiseta melanura</i>	+74.00%	+95.33%	Berlin, Hopkinton, Millbury
<i>Ochlerotatus canadensis</i>	-14.29%	~ +4500%	Millbury
<i>Culex</i> Species	-13.45%	+254.5%	Millbury, Dracut, Hopedale
All Species	-11.65%	+204.7%	Millbury, Dracut

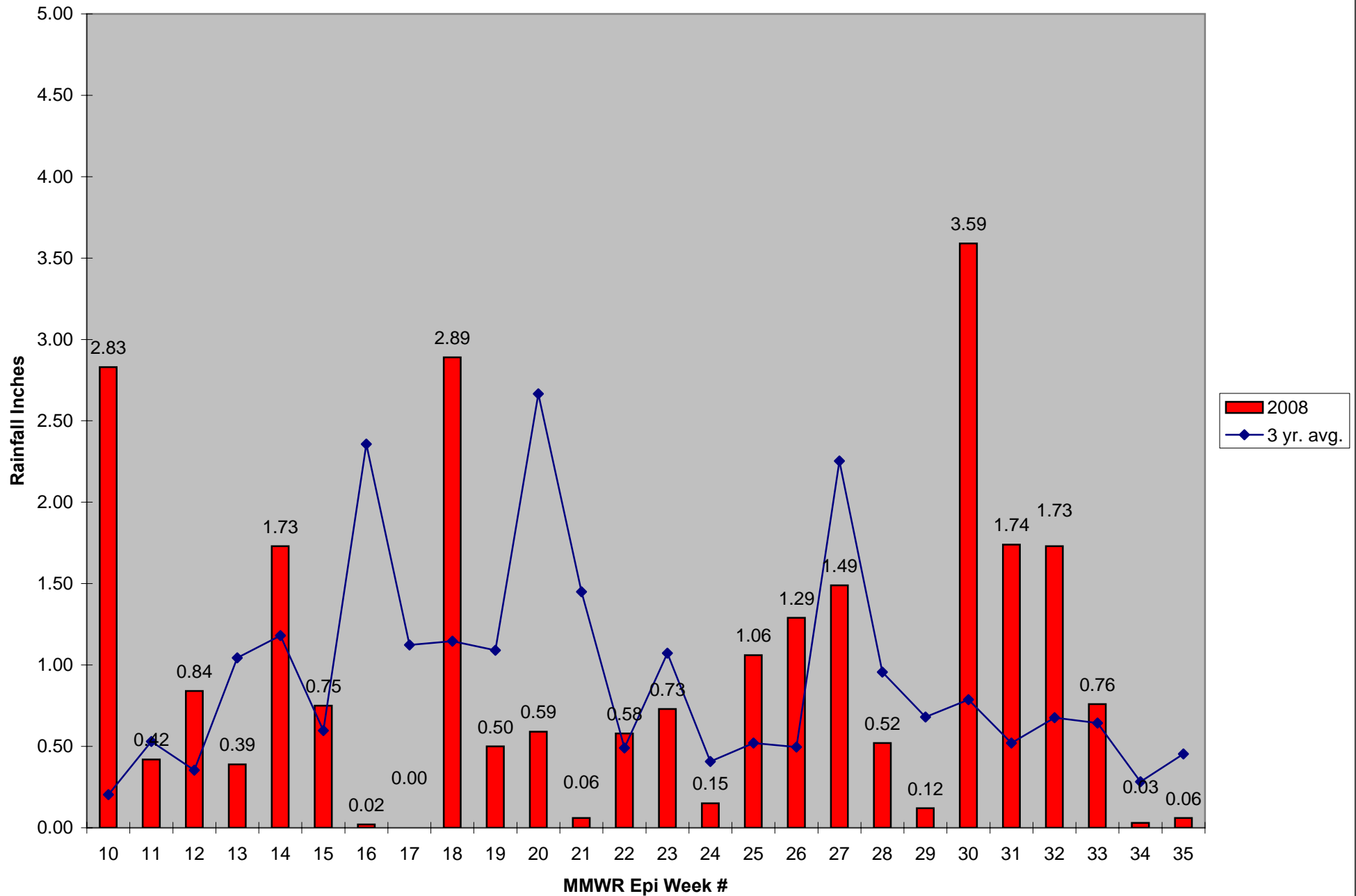
The predominant mosquito species for the week was *Culex pipiens/restuans*.

2008 Mass. Rainfall Data vs. 28 Year Average*



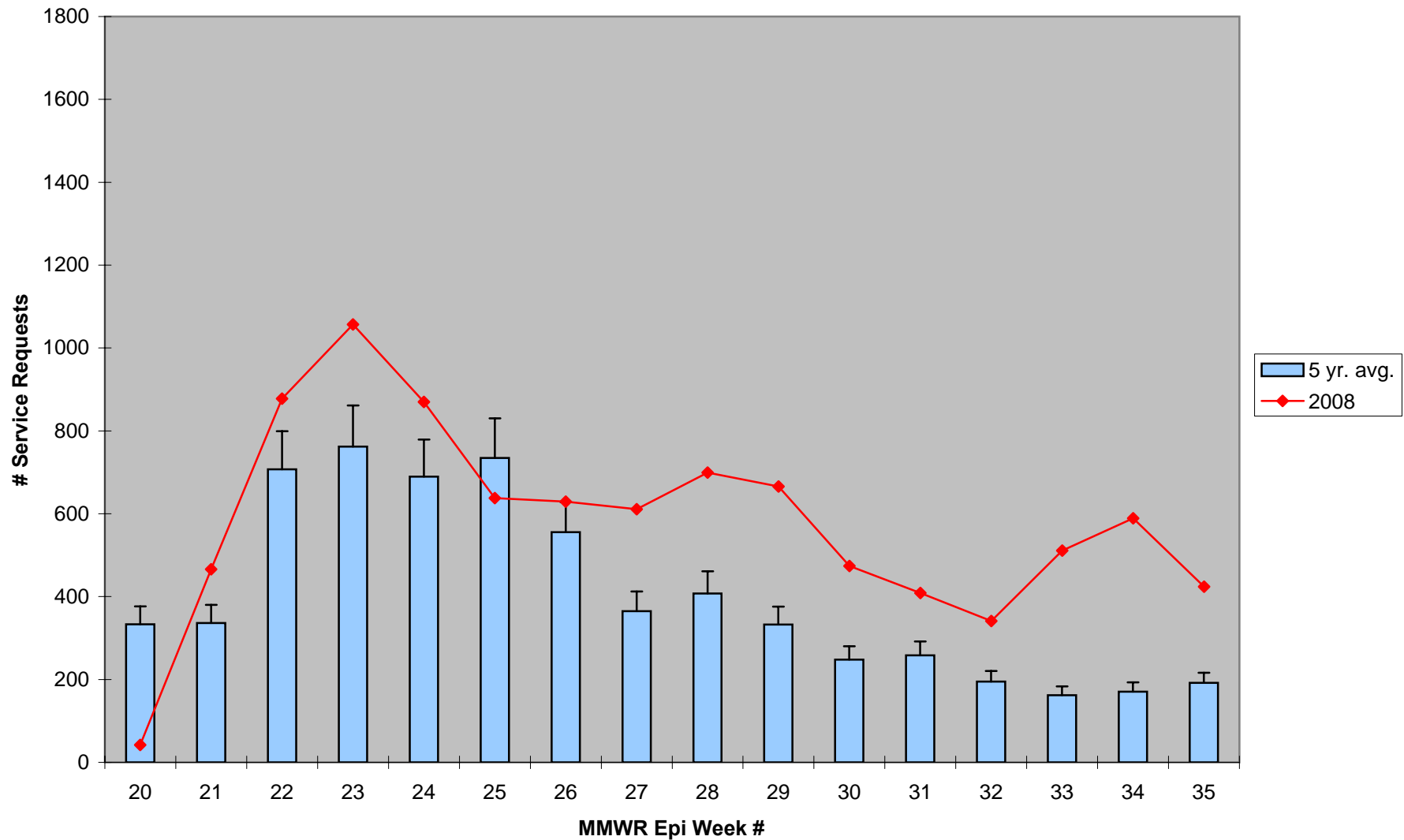
**June & July saw variable rainfall amounts in excess of these totals

2008 CMMCP Weekly Rainfall vs. 3 Year Average*



*Source: CMMCP Weather Station - Northborough, MA

ULV Service Request History Comparison 2003-2008



Error bars show approx. number of requests if we had 39 cities and towns over the 5 year average