

# CMMCP WEEKLY SURVEILLANCE REPORT



**EPI week #38**  
**Sept. 14-20, 2008**

*Frank Cornine, Field Biologist*  
*Curtis Best, Staff Entomologist*  
*Tim McGlinchy, Director of Operations*  
*Tim Deschamps, Executive Director*

**Central Mass. Mosquito Control Project**  
**Weekly Report- 9/14/08-9/20/08**  
**MMWR Week #38**

**Cumulative Surveillance Summary**

Target Species	<i>Ae. vex</i>	<i>Cq. per</i>	<i>Cs. mel</i>	<i>Oc. can</i>	<i>Culex</i>	All Species
<b>No. Pools</b>	168	418	231	213	653	3258
<b>Total Specimens</b>	988	15590	1261	1448	11974	36581
<b>No. Pools WNV +</b>	0	0	1*	0	7*	8*
<b>No. Pools EEE +</b>	0	0	0	0	0	0

\*Pool of WNV+ *Culex pipiens/restuans* collected in Millbury on 7/1/08

\*Pool of WNV+ *Culex pipiens/restuans* collected in Clinton on 8/13/08

\*Pool of WNV+ *Culex pipiens/restuans* collected in Auburn on 9/4/08

\*Pool of WNV+ *Culex pipiens/restuans* collected in Shrewsbury on 9/4/08

\*Pool of WNV+ *Culex pipiens/restuans* collected in Berlin on 9/10/08

\*Pool of WNV+ *Culiseta melanura* collected in Berlin on 9/10/08

\*Pool of WNV+ *Culex pipiens/restuans* collected in Auburn on 9/18/08

\*Pool of WNV+ *Culex pipiens/restuans* collected in Auburn on 9/18/08

**Cumulative Surveillance Summary – Bird/Mammal/Other**

Species	Date	Town	County	Virus
Crow	8/5/08	Natick	Middlesex	WNV
Blue Jay	8/6/08	Dracut	Middlesex	WNV
Crow	8/13/08	Auburn	Worcester	WNV
Crow	9/8/08	Chelmsford	Middlesex	WNV
Crow	9/11/08	Tewksbury	Middlesex	WNV
Crow	9/15/08	Blackstone	Worcester	WNV

**Weather Summary (Northborough, MA):** The weather for this particular week averaged only 60.29°F with a recorded high temperature of 78.1°F and a recorded low temperature of only 37.0°F. For this week there was also a total of only .56 inches of rain observed. Compared to the previous week, it was approximately 3.42°F cooler on average, and rained 0.72 inches less. After this week, the rainfall for the month of September has totaled 5.65 inches, while the month of August finished with 4.08 inches.

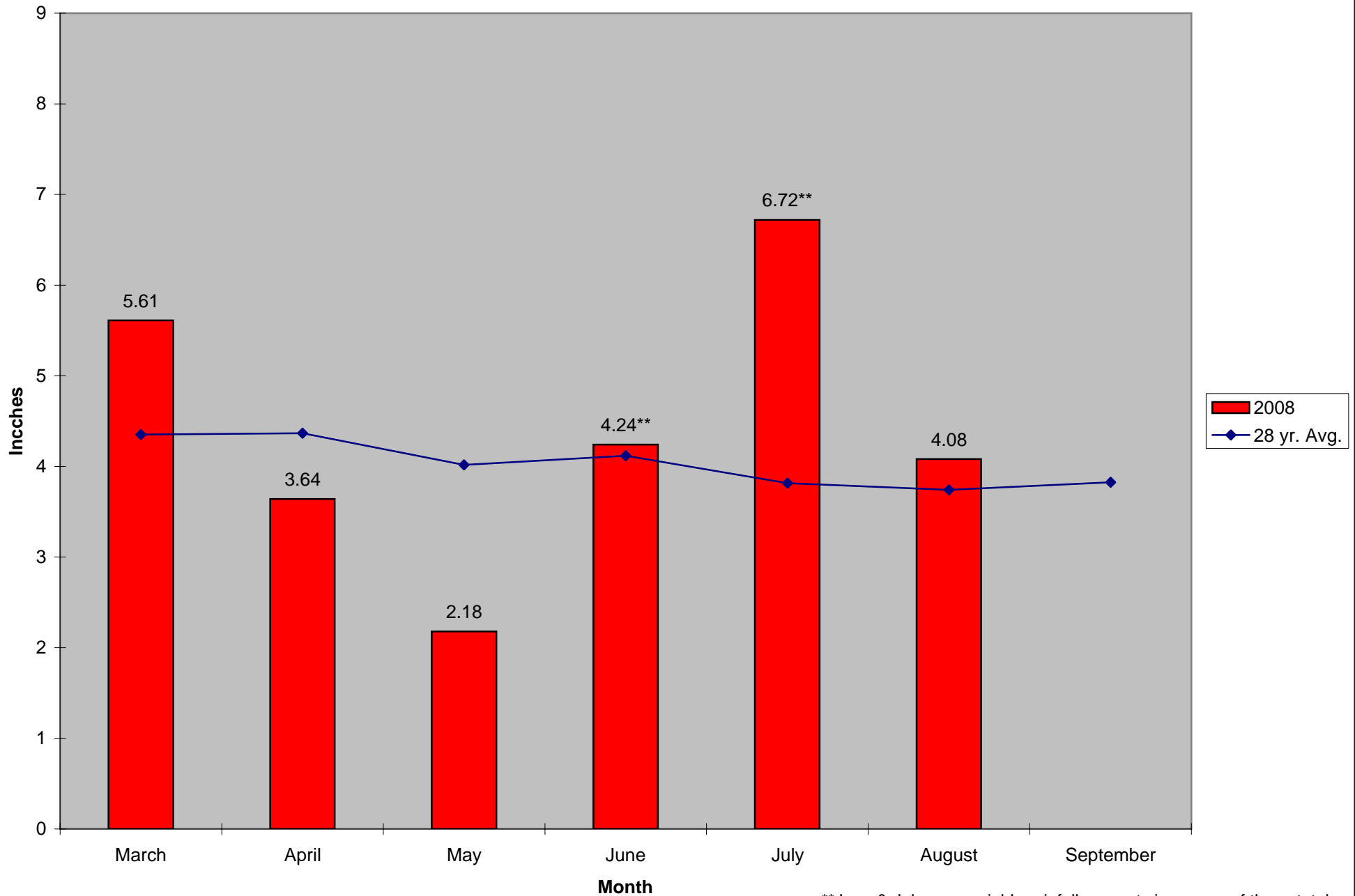
**CMMCP Mosquito Summary-**

**Target Species                      Δ From                      Δ From                      Predominant Trap Site(s)**  
    **Last Week                      Last Year**

<i>Aedes vexans</i>	-65.00%	+2000%	Southborough, Northbridge
<i>Coquillettidia perturbans</i>	-83.92%	+228.6%	Webster, Lunenburg
<i>Culiseta melanura</i>	-56.94%	+109.3%	Boxborough, Berlin
<i>Ochlerotatus canadensis</i>	-42.22%	~ +2600%	Millbury, Westford
<i>Culex</i> Species	-41.79%	+482.1%	Hopedale, Shrewsbury, Auburn
All Species	-49.15%	+273.9%	Hopedale, Boxborough, Auburn

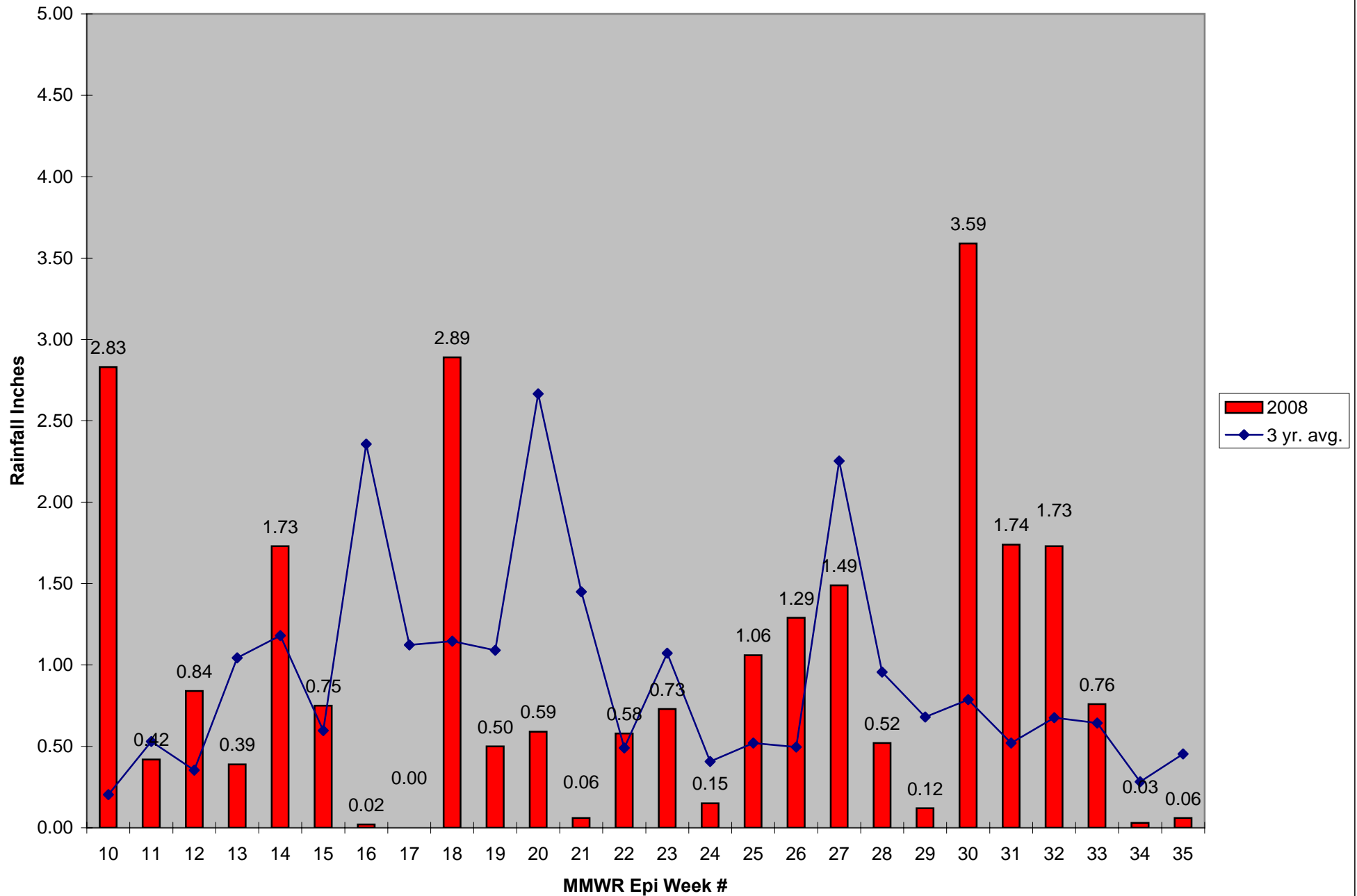
The predominant mosquito species for the week was *Culex pipiens/restuans*.

### 2008 Mass. Rainfall Data vs. 28 Year Average\*



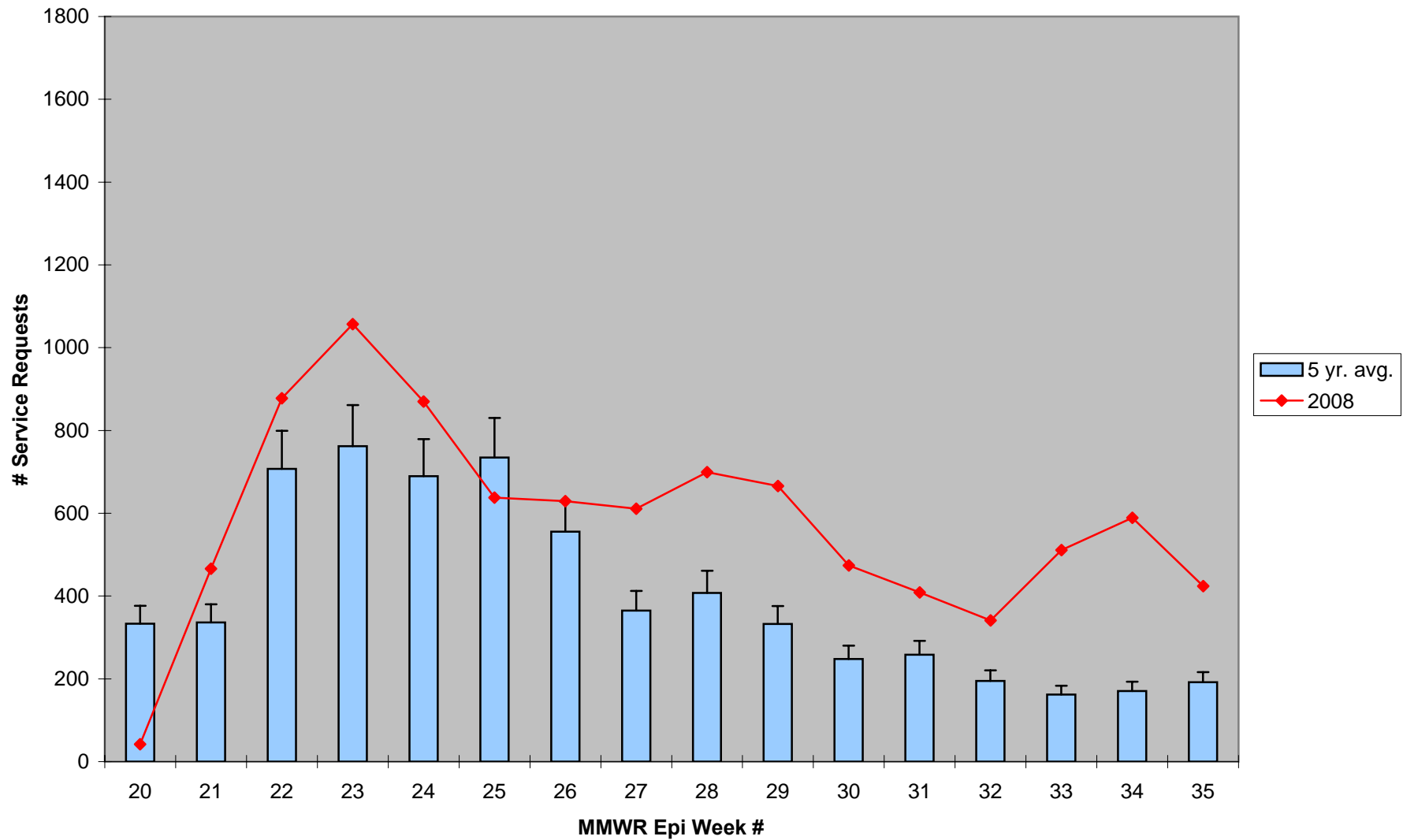
\*\*June & July saw variable rainfall amounts in excess of these totals

2008 CMMCP Weekly Rainfall vs. 3 Year Average\*



\*Source: CMMCP Weather Station - Northborough, MA

### ULV Service Request History Comparison 2003-2008



Error bars show approx. number of requests if we had 39 cities and towns over the 5 year average