

# CMMCP WEEKLY SURVEILLANCE REPORT



**EPI week #25**  
**Jun. 21 – Jun. 27, 2009**

**Frank Cornine**, *Field Biologist*  
**Curtis Best**, *Staff Entomologist*  
**Tim McGlinchy**, *Director of Operations*  
**Tim Deschamps**, *Executive Director*

**Central Mass. Mosquito Control Project**  
**Weekly Report- 6/21/09-6/27/09**  
**EPI Week #25**

**Cumulative Surveillance Summary**

<b>Target Species</b>	<b><i>Ae. vex</i></b>	<b><i>Cq. per</i></b>	<b><i>Cs. mel</i></b>	<b><i>Oc. can</i></b>	<b><i>Culex</i></b>	<b>All Species</b>
<b>No. Pools</b>	9	61	63	43	163	526
<b>Total Specimens</b>	23	1071	679	260	2030	4703
<b>No. Pools WNV +</b>	0	0	0	0	0	0
<b>No. Pools EEE +</b>	0	0	0	0	0	0

**Weather Summary (Northborough, MA):** The weather for this particular week averaged 65.71°F with a recorded high temperature of 84.5°F and a recorded low temperature of 59.8°F. For this week there was also a total of .97 inches of rain observed, raising the total for June to 3.93 inches (CMMCP/Northborough). Compared to the previous week, it was approximately 3.88°F cooler on average, and rained about .61 inches less. The total statewide rainfall for the month of May was 4.04" (CMMCP/Northborough 2.71"). Requests for spraying totaled 767 this week, just slightly above the 6 year average of 719 for EPI week #25. For the year we have received 35.9% more requests; 4,931 requests to date compared to the 6 year average of 3,628.

No arboviruses have been confirmed in our service area as of this date.

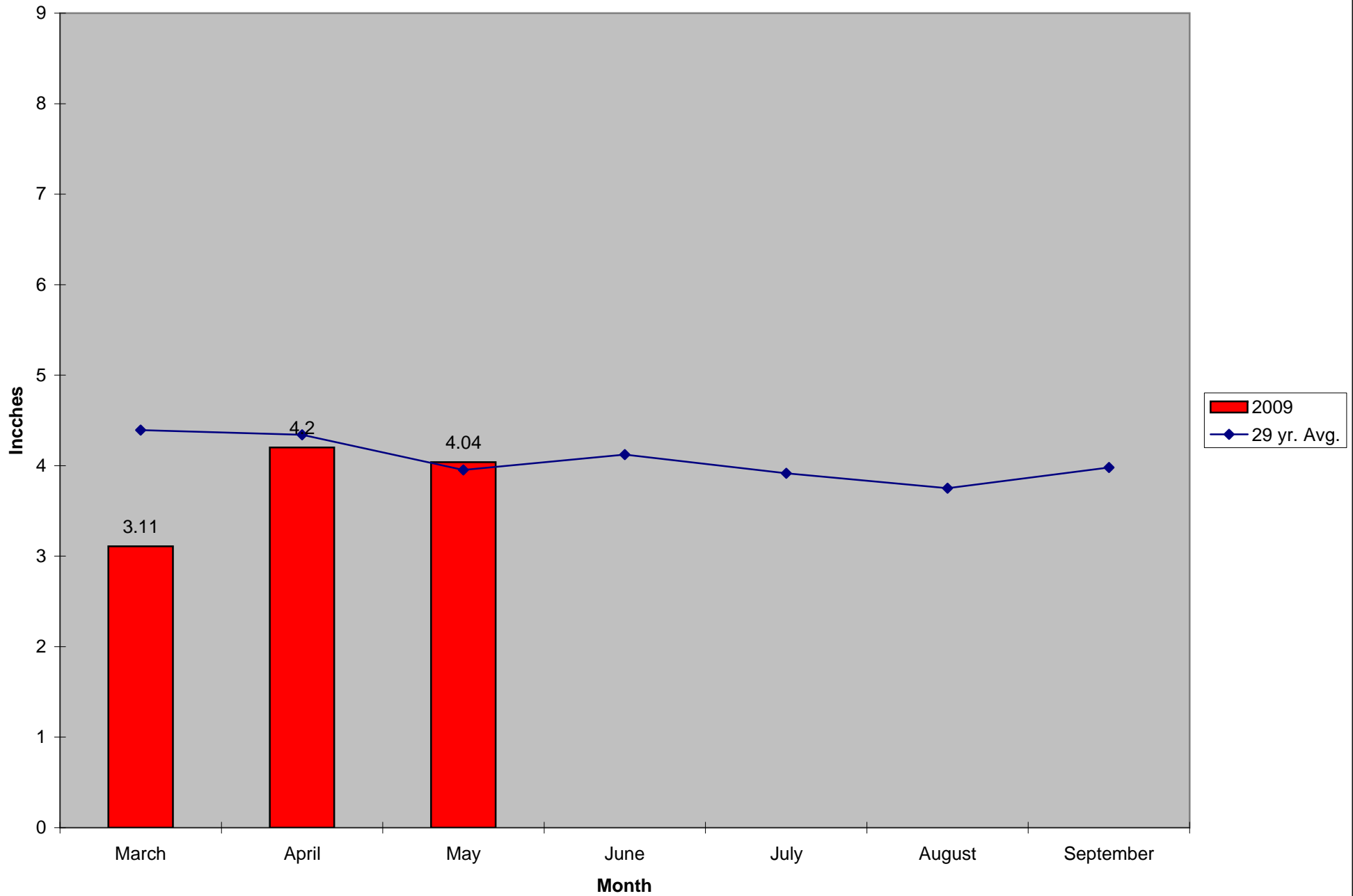
**CMMCP Mosquito Summary-**

<b>Target Species</b>	<b>Δ From Last Week</b>	<b>Δ From Last Year</b>	<b>Predominant Trap Site(s)</b>
-----------------------	-------------------------	-------------------------	---------------------------------

<i>Aedes vexans</i>	0.00%	+100.00%	Westford
<i>Coquillettidia perturbans</i>	+0.630%	+27.73%	Boxborough
<i>Culiseta melanura</i>	+39.32%	+640.9%	Boxborough, Hopkinton
<i>Ochlerotatus canadensis</i>	+62.16%	-42.86%	Hopkinton, Westford
<i>Culex</i> Species	-33.88%	-53.22%	Northbridge
All Species	+1.550%	+5.930%	Boxborough

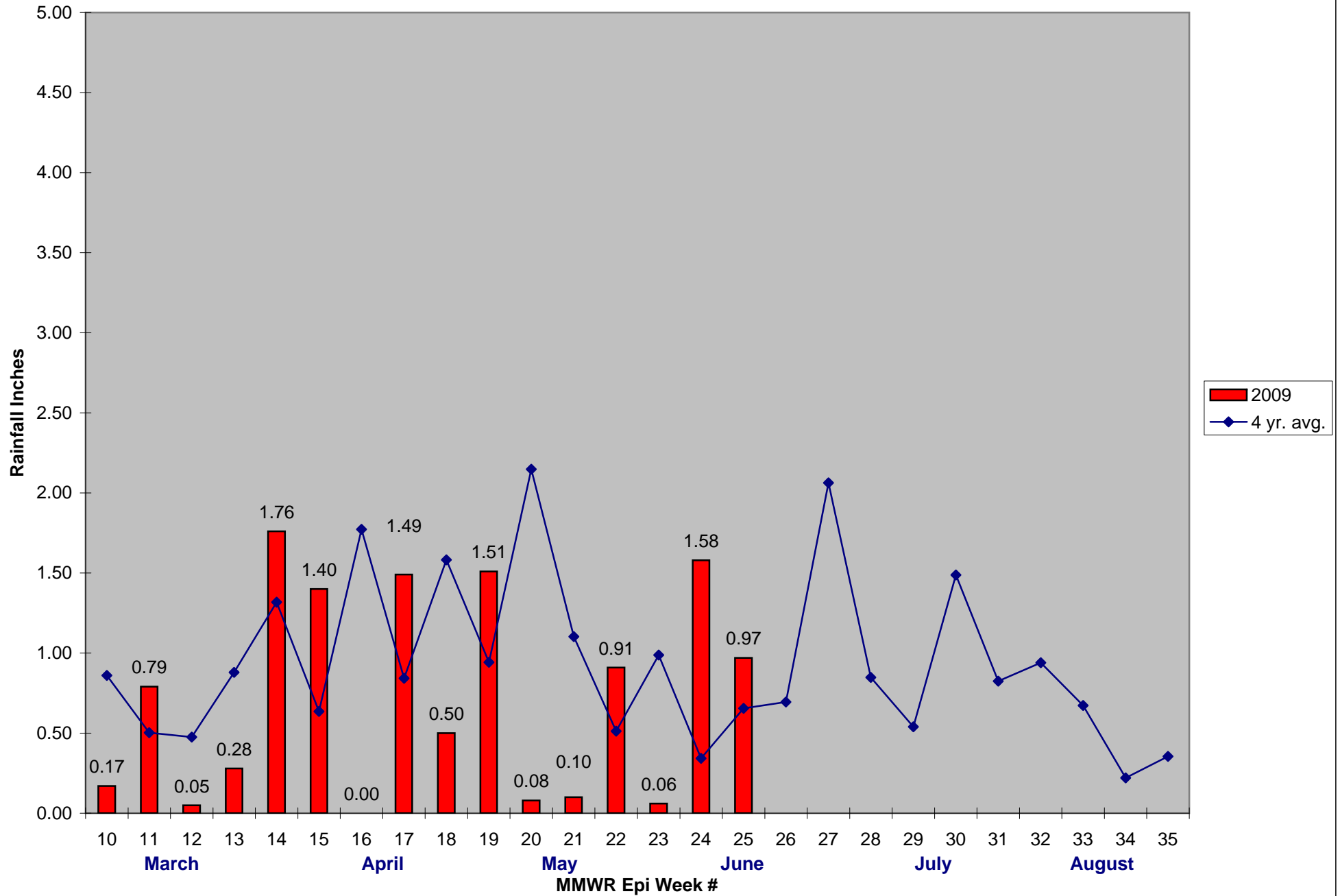
The predominant mosquito for the week was *Coquillettidia perturbans*, followed by *Culex* Species.

### 2009 Mass. Rainfall Data vs. 29 Year Average\*



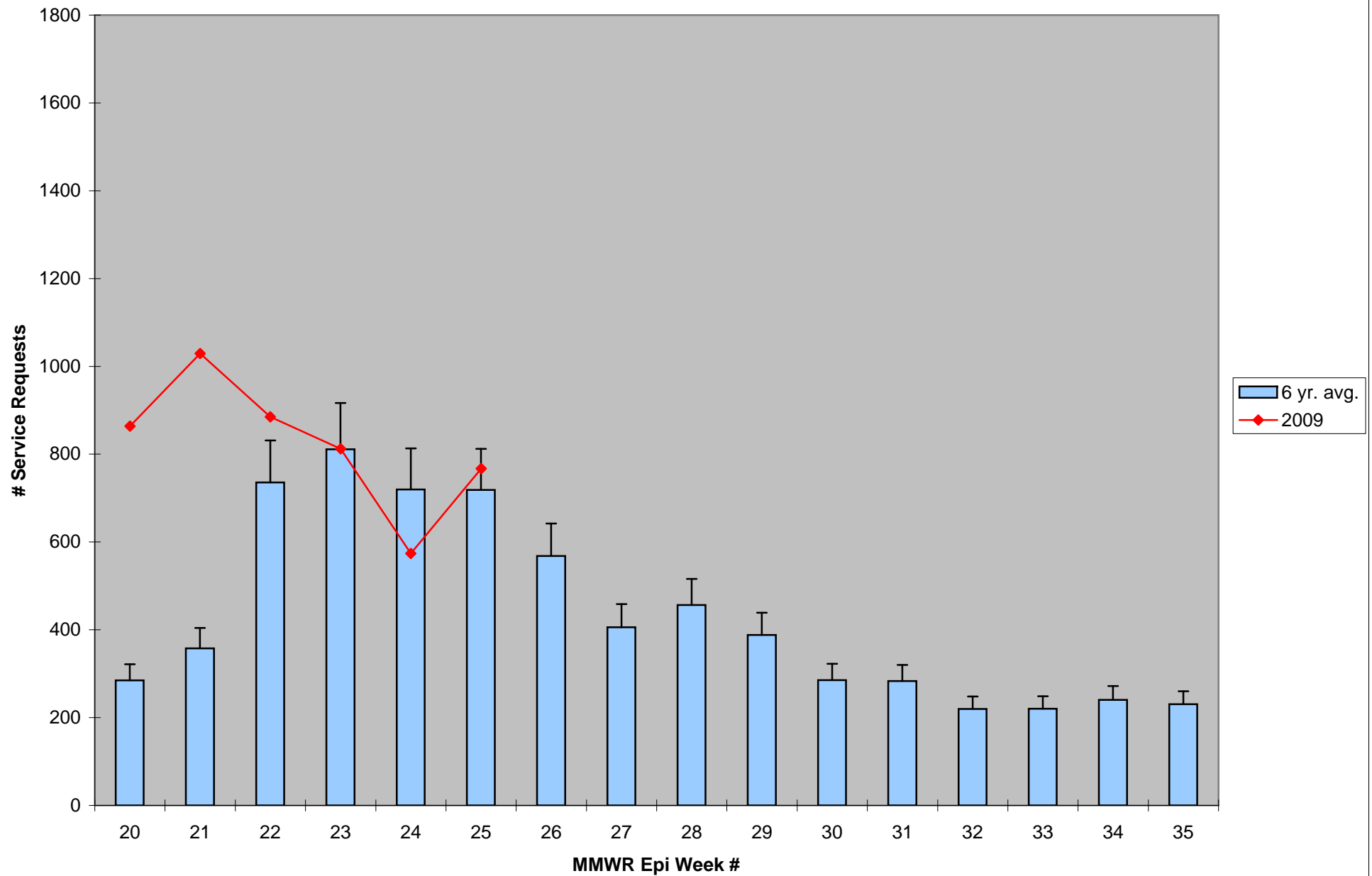
\*Source: Northeast Regional Climate Center: [http://www.nrcc.cornell.edu/page\\_summaries.html](http://www.nrcc.cornell.edu/page_summaries.html)

2009 CMMCP Weekly Rainfall vs. 4 Year Average\*



\*Source: CMMCP Weather Station - Northborough, MA

### ULV Service Request History Comparison 2003-2009



Error bars show approx. number of requests if we had 38 cities and towns over the 6 year average