

CMMCP WEEKLY SURVEILLANCE REPORT



EPI week #26
Jun. 28 – Jul. 4, 2009

Frank Cornine, *Field Biologist*
Curtis Best, *Staff Entomologist*
Tim McGlinchy, *Director of Operations*
Tim Deschamps, *Executive Director*

Central Mass. Mosquito Control Project
Weekly Report- 6/28/09-7/4/09
EPI Week #26

Cumulative Surveillance Summary

Target Species	<i>Ae. vex</i>	<i>Cq. per</i>	<i>Cs. mel</i>	<i>Oc. can</i>	<i>Culex</i>	All Species
No. Pools	12	83	76	54	205	658
Total Specimens	32	3932	797	321	2481	8290
No. Pools WNV +	0	0	0	0	0	0
No. Pools EEE +	0	0	0	0	0	0

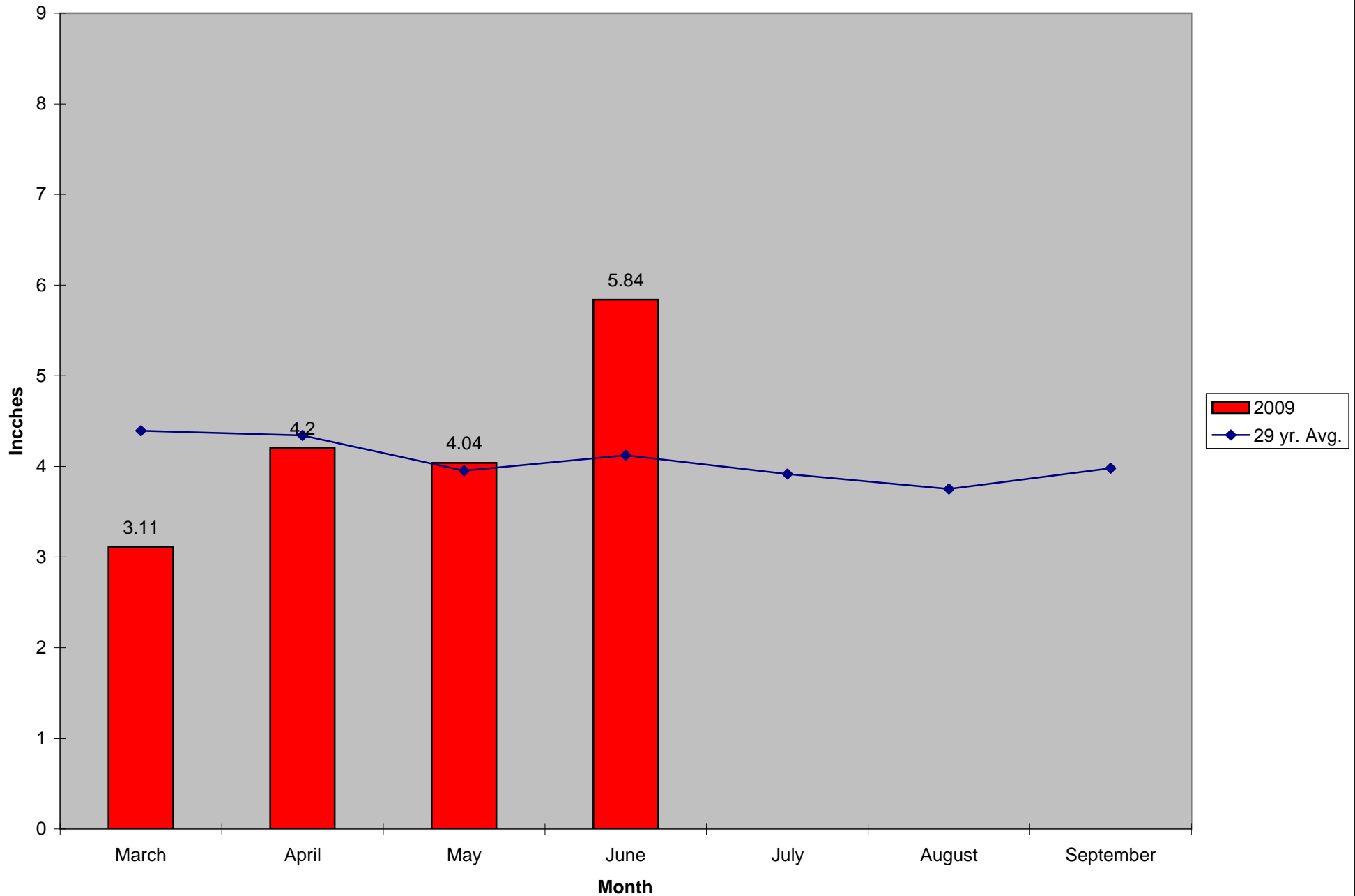
Weather Summary (Northborough, MA): The weather for this particular week averaged 65.70°F with a recorded high temperature of 81.1°F and a recorded low temperature of only 57.8°F. For this week there was also a total of 3.07 inches of rain observed, with July comprising 2.8 inches to date (CMMCP/Northborough). Compared to the previous week, it was approximately .01°F cooler on average, and rained about 2.1 inches more. The total statewide rainfall for the month of June was 5.84" (CMMCP/Northborough 4.2"). Requests for spraying totaled 898 this week, 58% above the 6 year average of 568 for EPI week #26. For the year we have received 38.9% more requests; 5,829 requests to date compared to the 6 year average of 4,196.

CMMCP Mosquito Summary-

Target Species	Δ From Last Week	Δ From Last Year	Predominant Trap Site(s)
<i>Aedes vexans</i>	+800.0%	+900.0%	Lancaster
<i>Coquillettidia perturbans</i>	+497.1%	+225.7%	Leominster, Tewksbury
<i>Culiseta melanura</i>	-27.61%	+372.0%	Wilmington
<i>Ochlerotatus canadensis</i>	+1.670%	+79.41%	Wilmington, Fitchburg
<i>Culex</i> Species	+148.1%	+48.13%	Chelmsford, Tewksbury
All Species	+258.6%	+170.1%	Tewksbury, Leominster

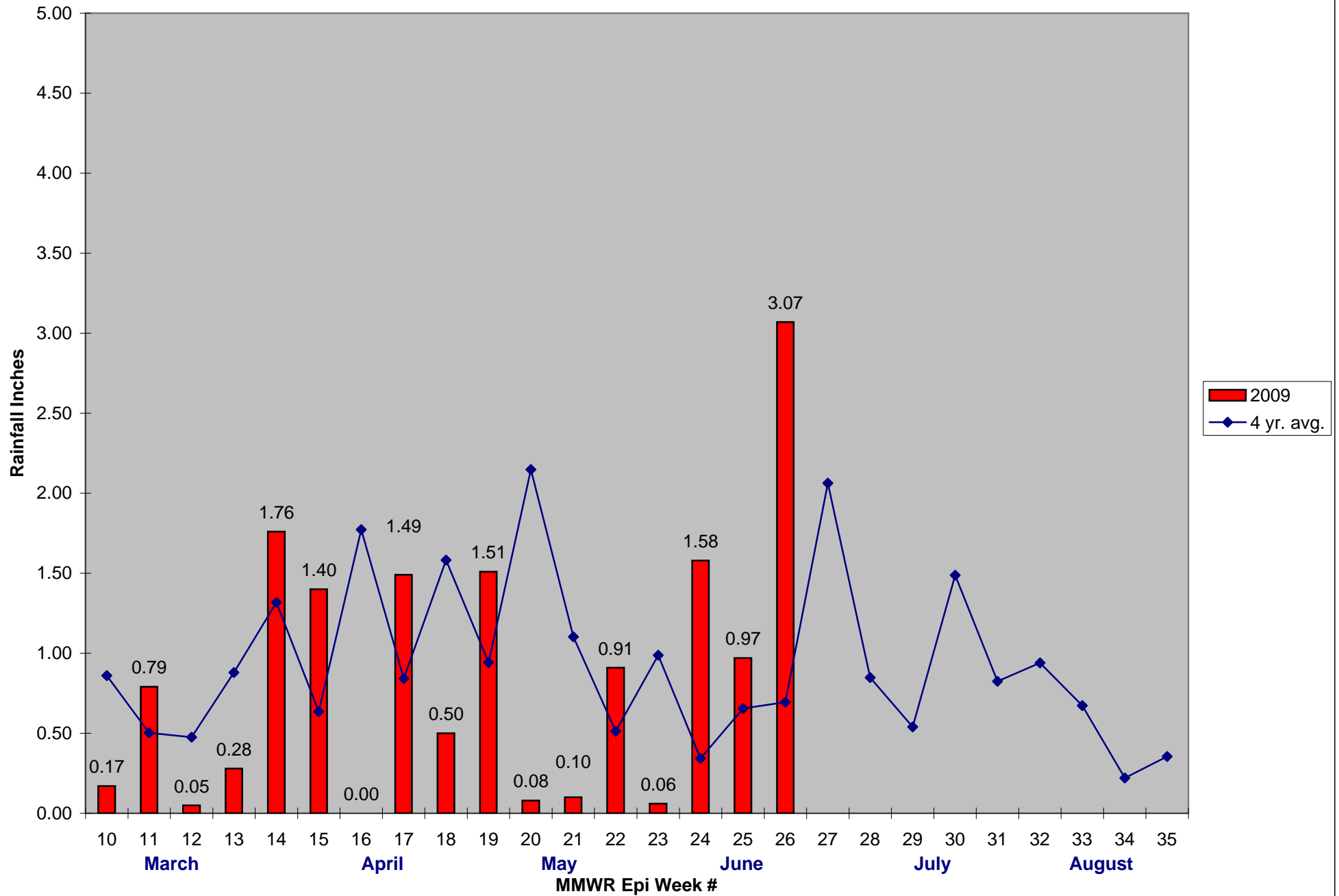
The predominant mosquito for the week was *Coquillettidia perturbans*, followed by *Culex* Species.

2009 Mass. Rainfall Data vs. 29 Year Average*



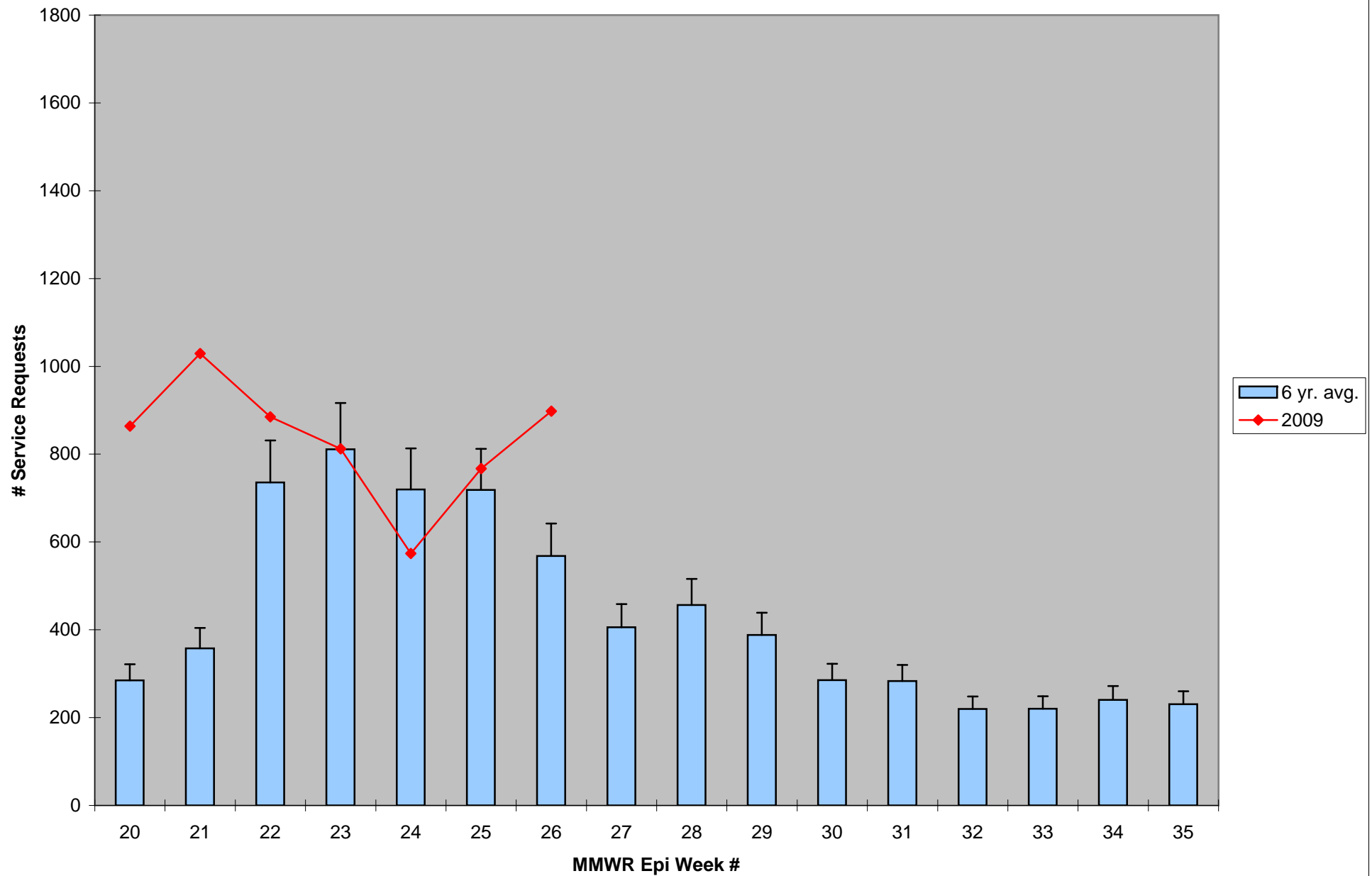
*Source: Northeast Regional Climate Center: http://www.nrcc.cornell.edu/page_summaries.html

2009 CMMCP Weekly Rainfall vs. 4 Year Average*



*Source: CMMCP Weather Station - Northborough, MA

ULV Service Request History Comparison 2003-2009



Error bars show approx. number of requests if we had 38 cities and towns over the 6 year average