

CMMCP WEEKLY SURVEILLANCE REPORT



EPI week #27
Jul. 5 – Jul. 11, 2009

Frank Cornine, *Field Biologist*
Curtis Best, *Staff Entomologist*
Tim McGlinchy, *Director of Operations*
Tim Deschamps, *Executive Director*

Central Mass. Mosquito Control Project
Weekly Report- 7/5/09-7/11/09
EPI Week #27

Cumulative Surveillance Summary

Target Species	<i>Ae. vex</i>	<i>Cq. per</i>	<i>Cs. mel</i>	<i>Oc. can</i>	<i>Culex</i>	All Species
No. Pools	18	103	92	62	256	827
Total Specimens	45	5038	905	349	3356	10601
No. Pools WNV +	0	0	0	0	0	0
No. Pools EEE +	0	0	0	0	0	0

Weather Summary (Northborough, MA): The weather for this particular week averaged 64.47°F with a recorded high temperature of 83.0°F and a recorded low temperature of only 48.6°F. For this week there was also a total of 3.41 inches of rain observed, with July comprising 6.21 inches to date (CMMCP/Northborough). Compared to the previous week, it was approximately 1.23°F cooler on average, and rained about .34 inches more. The total statewide rainfall for the month of June was 5.84" (CMMCP/Northborough 4.2"). Requests for spraying totaled 1,071 this week, 263% above the 6 year average of 406 for EPI week #27. This is a 19% increase from EPI week #26. For the year we have received 49.9% more requests; 6,900 requests to date compared to the 6 year average of 4,602.

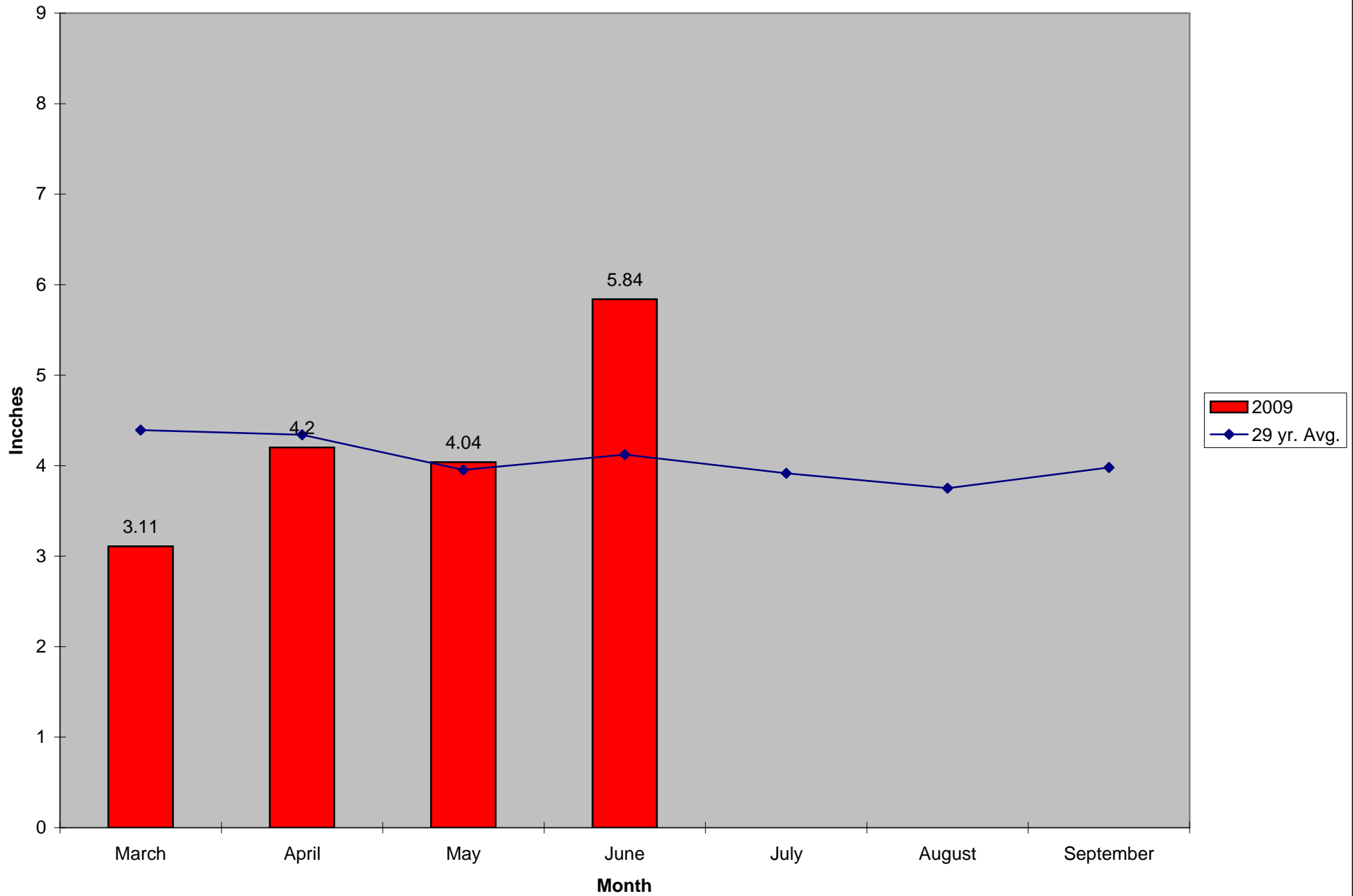
CMMCP Mosquito Summary-

Target Species	Δ From Last Week	Δ From Last Year*	Predominant Trap Site(s)
<i>Aedes vexans</i>	+44.44%	+ ∞	Southborough
<i>Coquillettidia perturbans</i>	-61.33%	+78.10%	Boxborough, Southborough
<i>Culiseta melanura</i>	-10.17%	+341.7%	Boxborough, Westborough
<i>Ochlerotatus canadensis</i>	-54.10%	-3.450%	Hopkinton
<i>Culex</i> Species	+89.17%	+355.2%	Northborough, Westborough
All Species	-38.87%	+144.1%	Boxborough, Southborough

*2008 EPI Week 27 had no observed *Aedes vexans*

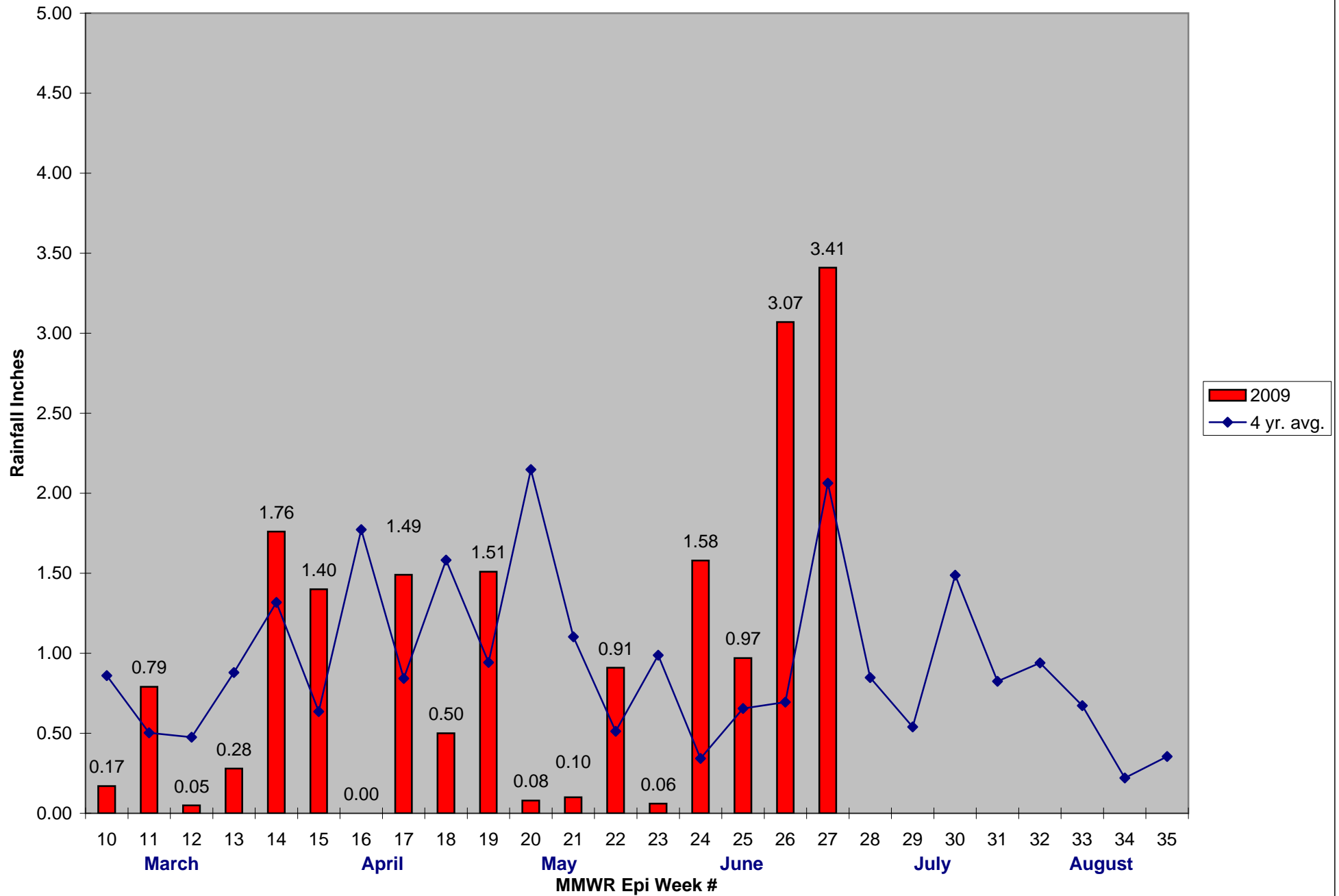
The predominant mosquito for the week was *Coquillettidia perturbans*, followed by *Culex* Species.

2009 Mass. Rainfall Data vs. 29 Year Average*



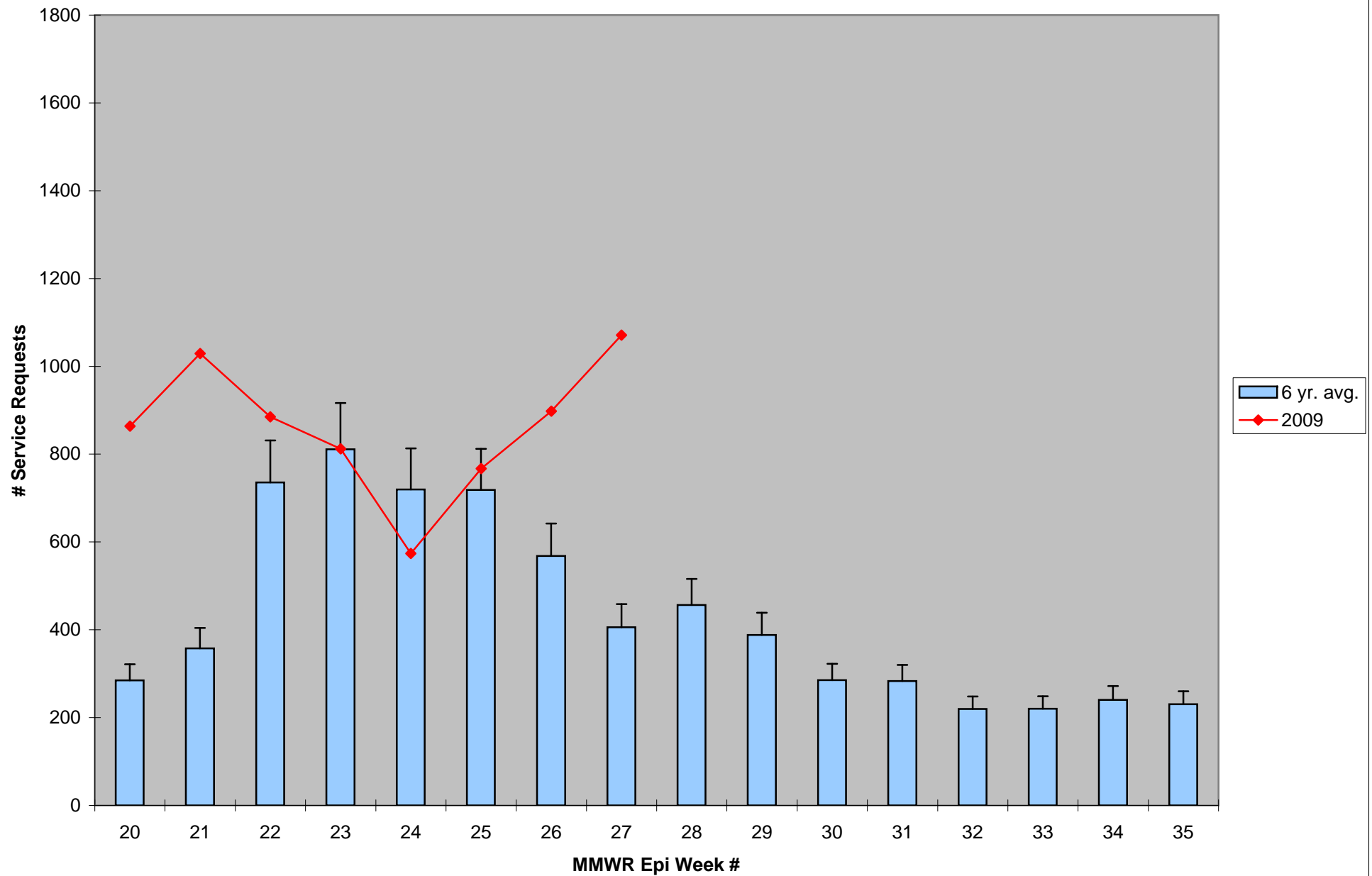
*Source: Northeast Regional Climate Center: http://www.nrcc.cornell.edu/page_summaries.html

2009 CMMCP Weekly Rainfall vs. 4 Year Average*



*Source: CMMCP Weather Station - Northborough, MA

ULV Service Request History Comparison 2003-2009



Error bars show approx. number of requests if we had 38 cities and towns over the 6 year average