

CMMCP WEEKLY SURVEILLANCE REPORT



EPI week #28
Jul. 12 – Jul. 18, 2009

Frank Cornine, *Field Biologist*
Curtis Best, *Staff Entomologist*
Tim McGlinchy, *Director of Operations*
Tim Deschamps, *Executive Director*

Central Mass. Mosquito Control Project
Weekly Report- 7/12/09-7/18/09
EPI Week #28

Cumulative Surveillance Summary

Target Species	<i>Ae. vex</i>	<i>Cq. per</i>	<i>Cs. mel</i>	<i>Oc. can</i>	<i>Culex</i>	All Species
No. Pools	28	122	106	73	315	1026
Total Specimens	111	6358	965	399	4832	13864
No. Pools WNV +	0	0	0	0	0	0
No. Pools EEE +	0	0	0	0	0	0

Weather Summary (Northborough, MA): The weather for this particular week averaged 69.51°F with a recorded high temperature of 87.0°F and a recorded low temperature of only 52.5°F. For this week there was also a total of 1.12 inches of rain observed, with July comprising 7.33 inches to date (CMMCP/Northborough). Compared to the previous week, it was approximately 5.04°F warmer on average, and rained about 2.29 inches less. The total statewide rainfall for the month of June was 5.84" (CMMCP/Northborough 4.2"). Requests for spraying totaled 949 this week, 208% above the 6 year average of 456 for EPI week #28. This is a 13% decrease from EPI week #27. For the year we have received 55.1% more requests; 7,849 requests to date compared to the 6 year average of 5,058.

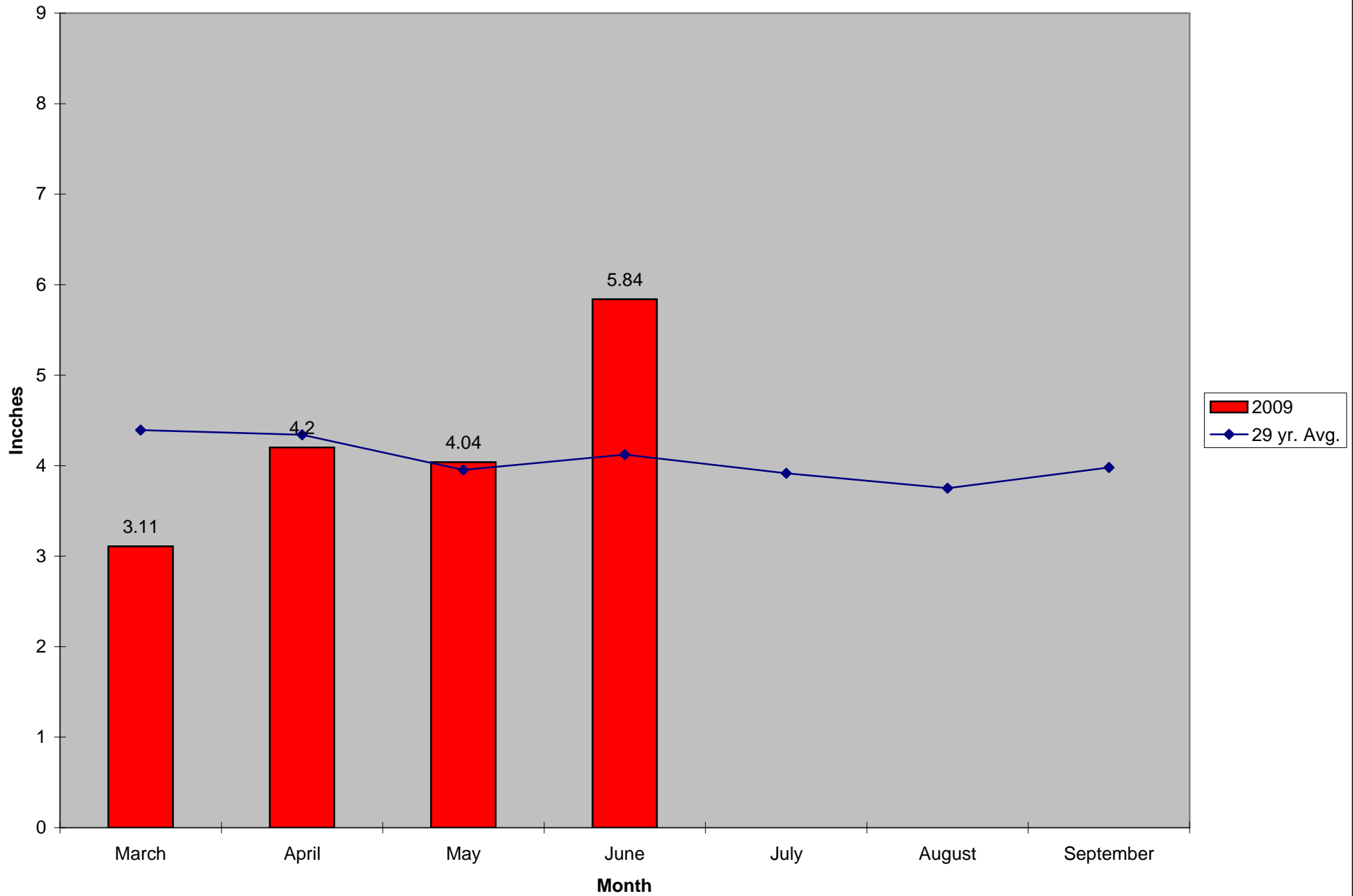
CMMCP Mosquito Summary-

Target Species	Δ From Last Week	Δ From Last Year	Predominant Trap Site(s)
----------------	---------------------	---------------------	--------------------------

<i>Aedes vexans</i>	+400.0%	+364.3%	Billerica, Leominster
<i>Coquillettidia perturbans</i>	+19.35%	-46.99%	Leominster
<i>Culiseta melanura</i>	-49.06%	+20.00%	Westford, Millbury
<i>Ochlerotatus canadensis</i>	+75.00%	+32.43%	Billerica, Fitchburg
<i>Culex</i> Species	-12.12%	+35.80%	Auburn
All Species	+8.640%	+50.13%	Leominster

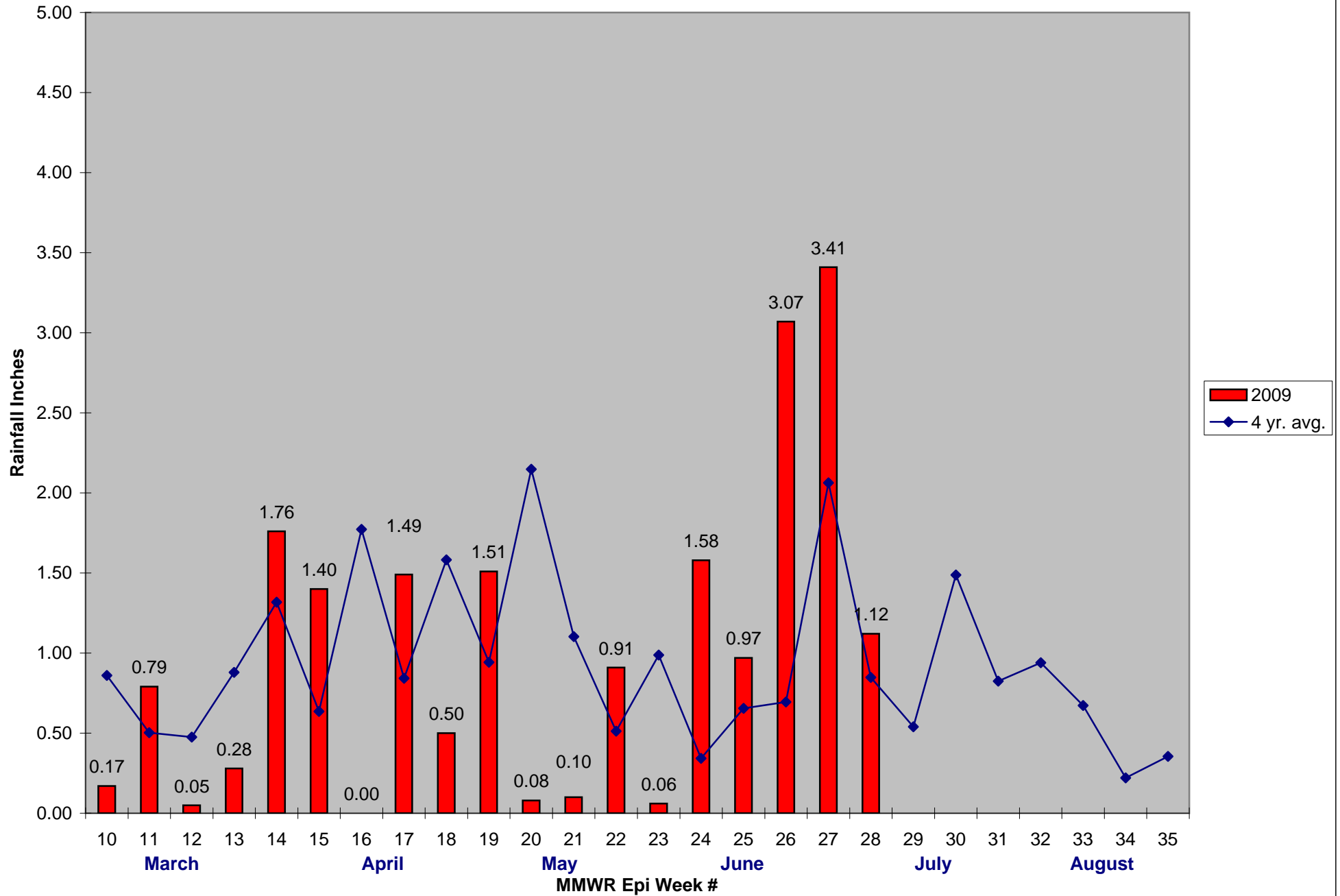
The predominant mosquito for the week was *Coquillettidia perturbans*, followed by *Culex* Species.

2009 Mass. Rainfall Data vs. 29 Year Average*



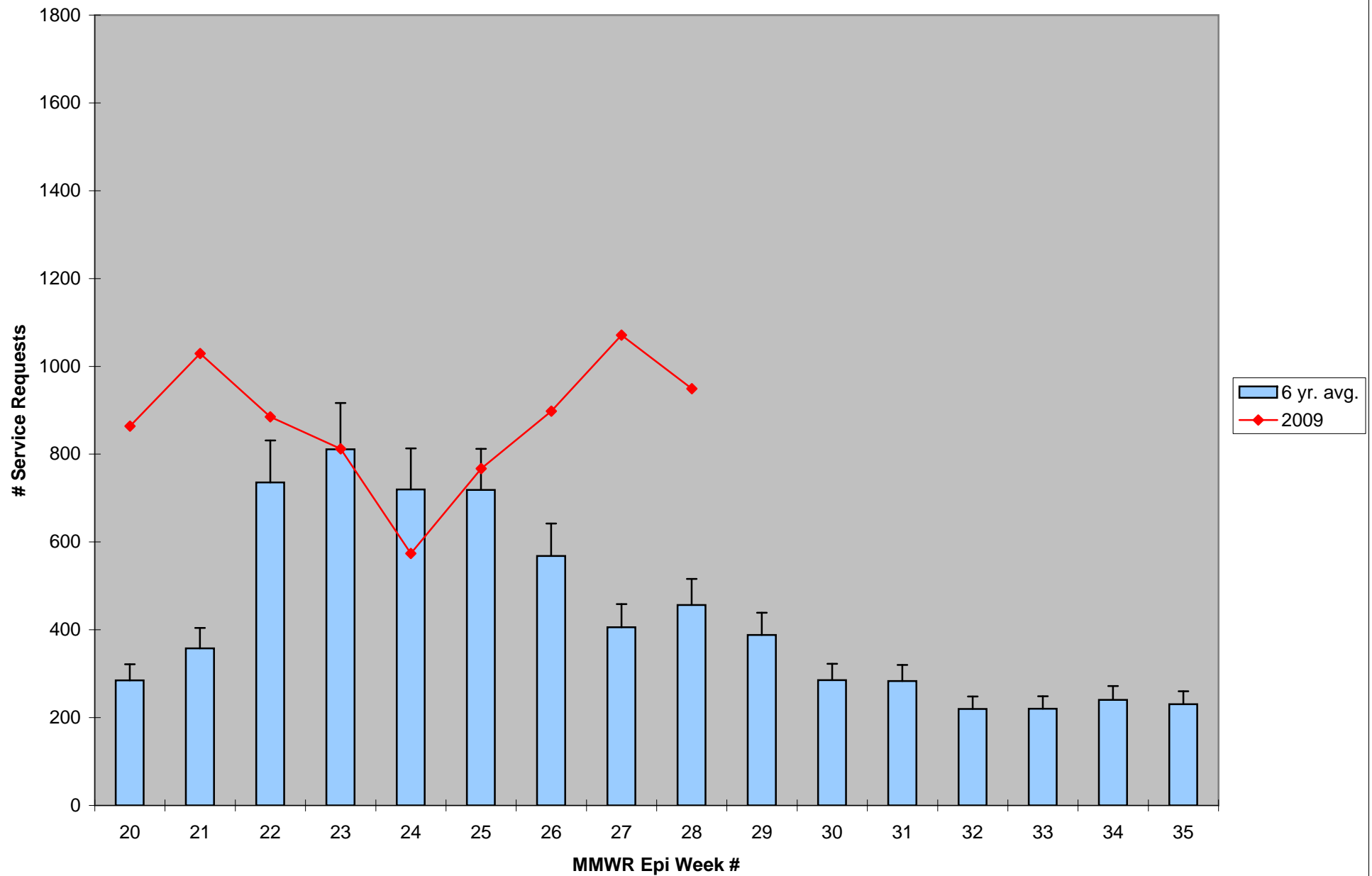
*Source: Northeast Regional Climate Center: http://www.nrcc.cornell.edu/page_summaries.html

2009 CMMCP Weekly Rainfall vs. 4 Year Average*



*Source: CMMCP Weather Station - Northborough, MA

ULV Service Request History Comparison 2003-2009



Error bars show approx. number of requests if we had 38 cities and towns over the 6 year average