

CMMCP WEEKLY SURVEILLANCE REPORT



EPI week #29
Jul. 19 – Jul. 25, 2009

Frank Cornine, *Field Biologist*
Curtis Best, *Staff Entomologist*
Tim McGlinchy, *Director of Operations*
Tim Deschamps, *Executive Director*

Central Mass. Mosquito Control Project
Weekly Report- 7/19/09-7/25/09
EPI Week #29

Cumulative Surveillance Summary

Target Species	<i>Ae. vex</i>	<i>Cq. per</i>	<i>Cs. mel</i>	<i>Oc. can</i>	<i>Culex</i>	All Species
No. Pools	38	139	124	81	367	1247
Total Specimens	196	8091	1111	425	5703	17173
No. Pools WNV +	0	0	0	0	0	0
No. Pools EEE +	0	0	0	0	0	0

Weather Summary (Northborough, MA): The weather for this particular week averaged 68.14°F with a recorded high temperature of 84.9°F and a recorded low temperature of only 57.0°F. For this week there was also a total of 3.14 inches of rain observed, with July comprising 10.47 inches to date (CMMCP/Northborough). Compared to the previous week, it was approximately 1.37°F cooler on average, and rained about 2.02 inches more. The total statewide rainfall for the month of June was 5.84" (CMMCP/Northborough 4.2"). Requests for spraying totaled 1029 this week, 265% above the 6 year average of 388 for EPI week #29. This is a 8% increase from EPI week #28. For the year we have received 63% more requests; 8,878 requests to date compared to the 6 year average of 5,447.

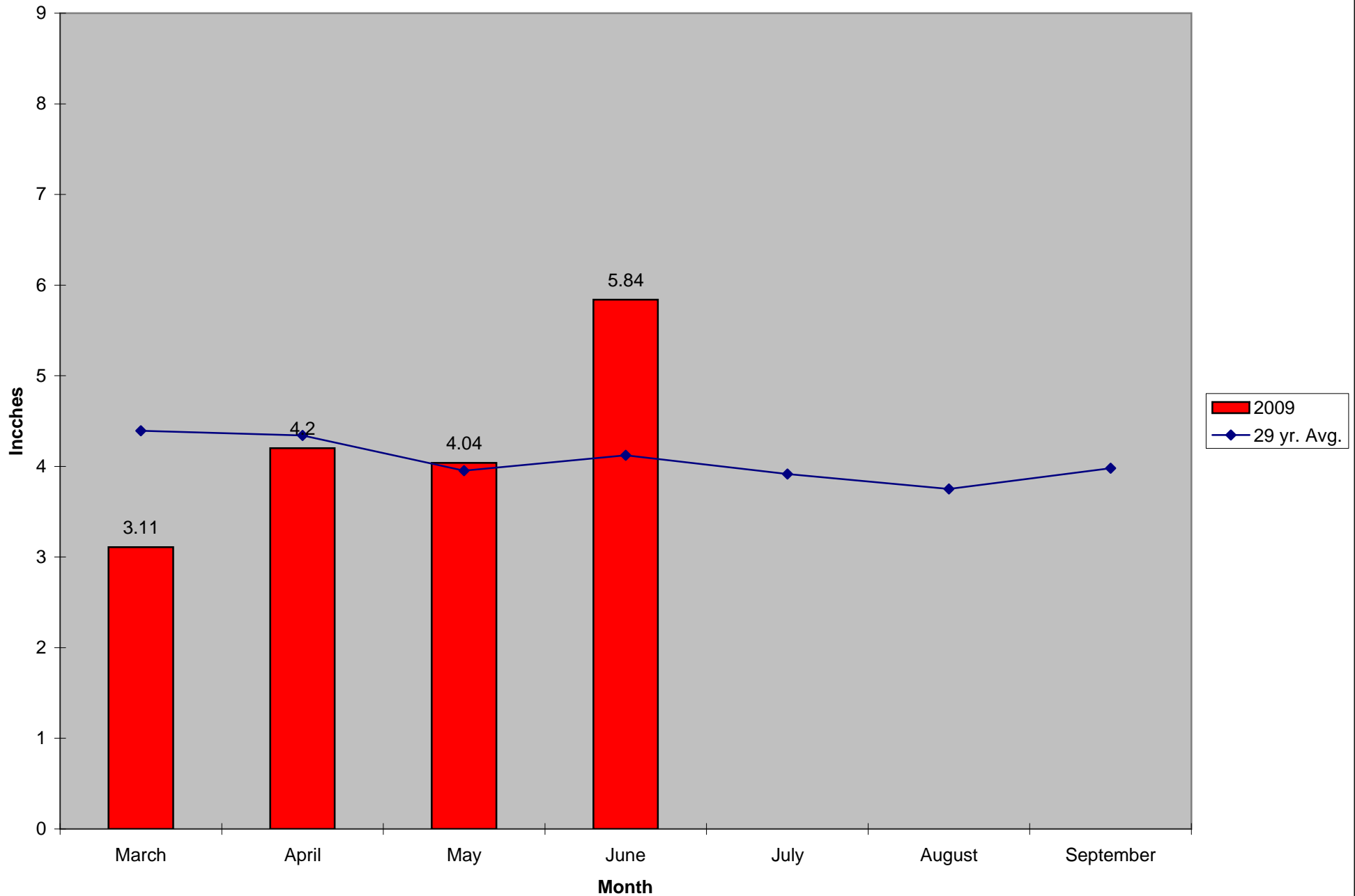
CMMCP Mosquito Summary-

Target Species	Δ From Last Week	Δ From Last Year	Predominant Trap Site(s)
----------------	---------------------	---------------------	--------------------------

<i>Aedes vexans</i>	+30.77%	+372.2%	Hudson, Hopkinton
<i>Coquillettidia perturbans</i>	+31.29%	+8.930%	Westborough
<i>Culiseta melanura</i>	+170.4%	+484.0%	Boxborough, Holliston
<i>Ochlerotatus canadensis</i>	-46.94%	+271.4%	Boxborough
<i>Culex</i> Species	+4.390%	+18.18%	Northborough, Westborough
All Species	+30.48%	+25.18%	Westborough, Boxborough

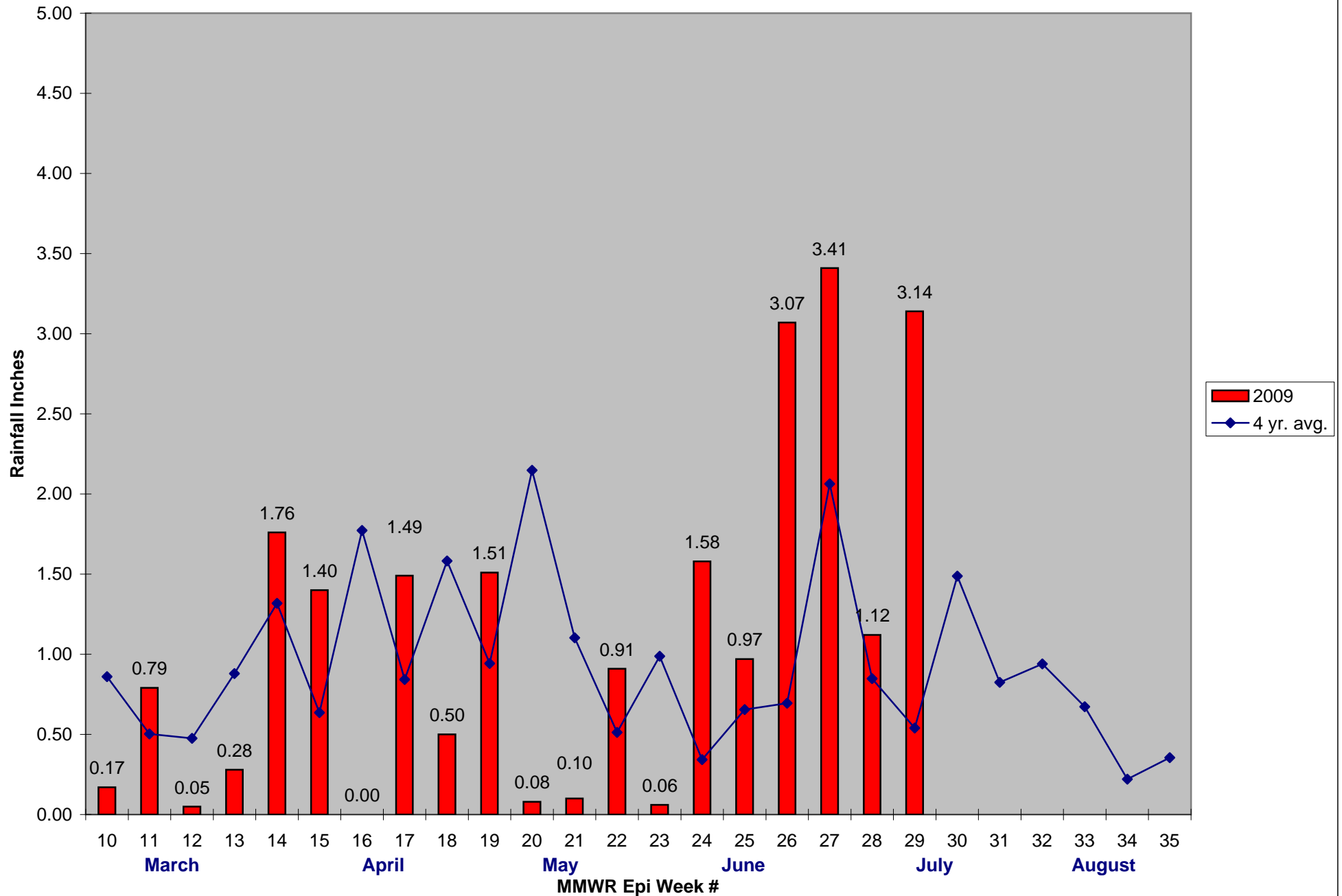
The predominant mosquito for the week was *Coquillettidia perturbans*, followed by *Culex* Species.

2009 Mass. Rainfall Data vs. 29 Year Average*



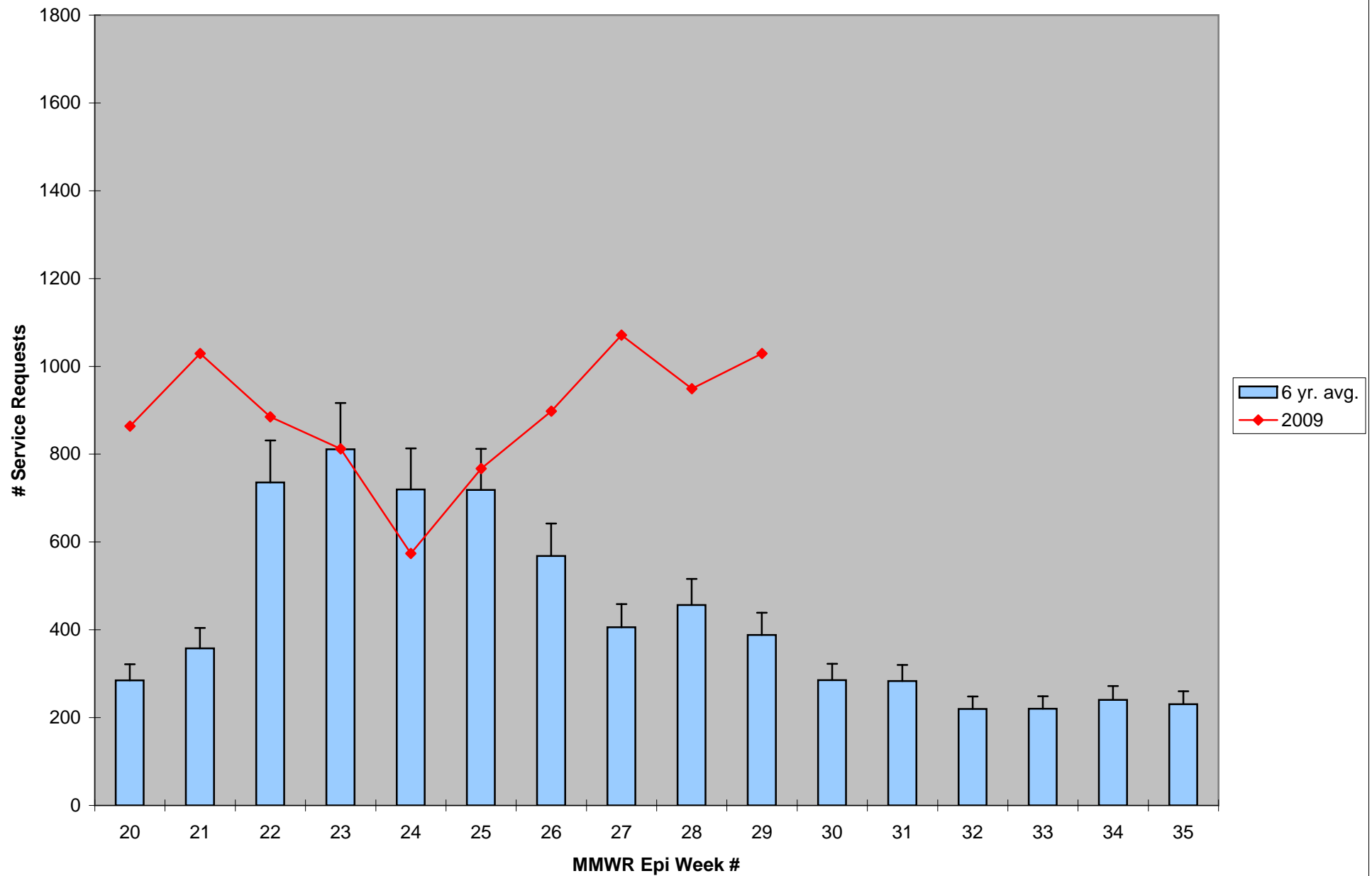
*Source: Northeast Regional Climate Center: http://www.nrcc.cornell.edu/page_summaries.html

2009 CMMCP Weekly Rainfall vs. 4 Year Average*



*Source: CMMCP Weather Station - Northborough, MA

ULV Service Request History Comparison 2003-2009



Error bars show approx. number of requests if we had 38 cities and towns over the 6 year average