

CMMCP WEEKLY SURVEILLANCE REPORT



EPI week #24
Jun. 13–19, 2010

Frank Cornine, *Field Biologist*
Curtis Best, *Staff Entomologist*
Tim McGlinchy, *Director of Operations*
Tim Deschamps, *Executive Director*

Central Mass. Mosquito Control Project
Weekly Report- 6/13/10-6/19/10
EPI Week #24

Cumulative Surveillance Summary

Target Species	<i>Ae. vex</i>	<i>Cq. per</i>	<i>Cs. mel</i>	<i>Oc. can</i>	<i>Culex</i>	All Species
No. Pools	4	48	57	43	144	497
Total Specimens	6	906	279	262	984	3094
No. Pools WNV +	0	0	0	0	0	0
No. Pools EEE +	0	0	0	0	0	0

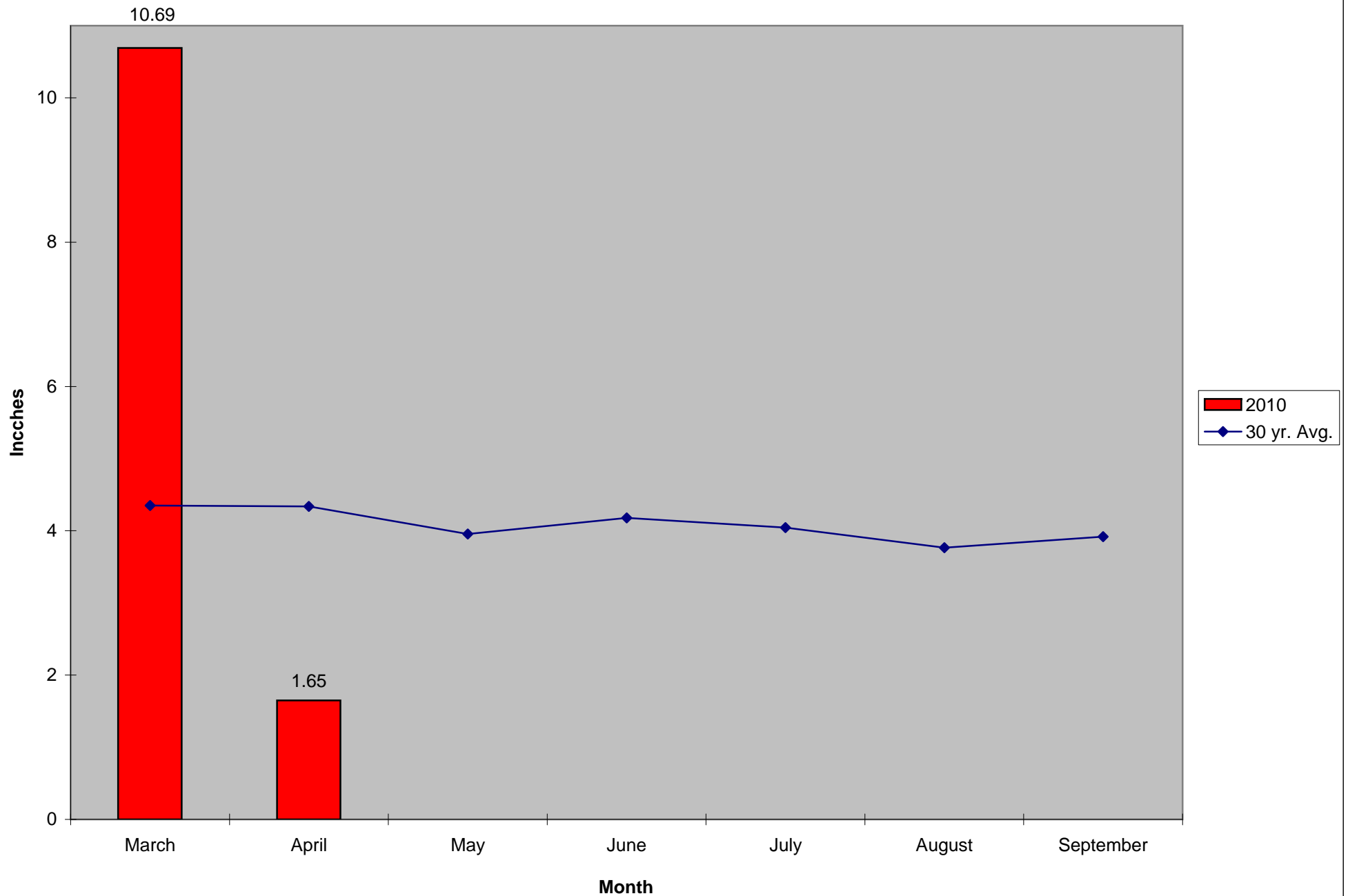
Weather Summary (Northborough, MA): The weather for this particular week averaged 67.33°F with a recorded high temperature of 89.7°F and a recorded low temperature of only 49.2°F. For this week there was also a total of 0.13 inches of rain observed. Compared to the previous week, it was approximately 6.29°F warmer on average, and rained about 1.98 inches less. June has accumulated 3.35 inches of rain, while the total rainfall for the month of May was 2.42 inches. Requests for spraying totaled 631 this week, 11% below the 7 year average of 699 for EPI week #24. This is a 15% decrease from EPI week #23. For the year we have received 68% more requests; 5,181 requests to date compared to the 7 year average of 3,088.

CMMCP Mosquito Summary*-

Target Species	Δ From Last Week	Δ From Last Year	Predominant Trap Site(s)
<i>Aedes vexans</i>	-75.00%	+00.00%	Dracut
<i>Coquillettidia perturbans</i>	+569.1%	+54.62%	Lunenburg, Wilmington
<i>Culiseta melanura</i>	+153.3%	-35.04%	Lunenburg, Wilmington, Tewksbury
<i>Ochlerotatus canadensis</i>	-81.16%	-64.86%	Holliston
<i>Culex</i> Species	+264.9%	+16.12%	Auburn
All Species	+216.4%	+21.72%	Lunenburg, Wilmington, Auburn

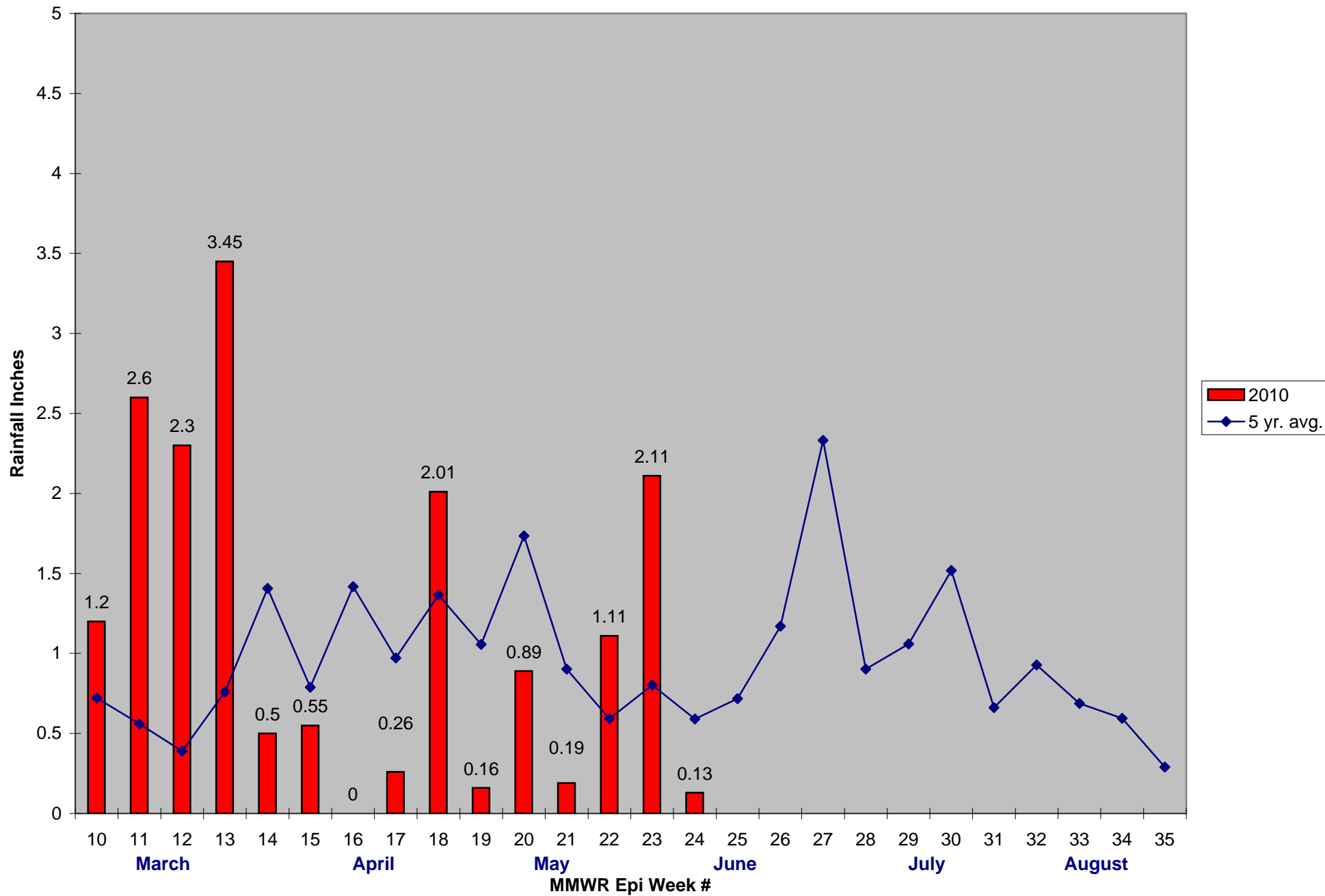
The predominant mosquito for the week was *Coquillettidia perturbans*.

2010 Mass. Rainfall Data vs. 30 Year Average*



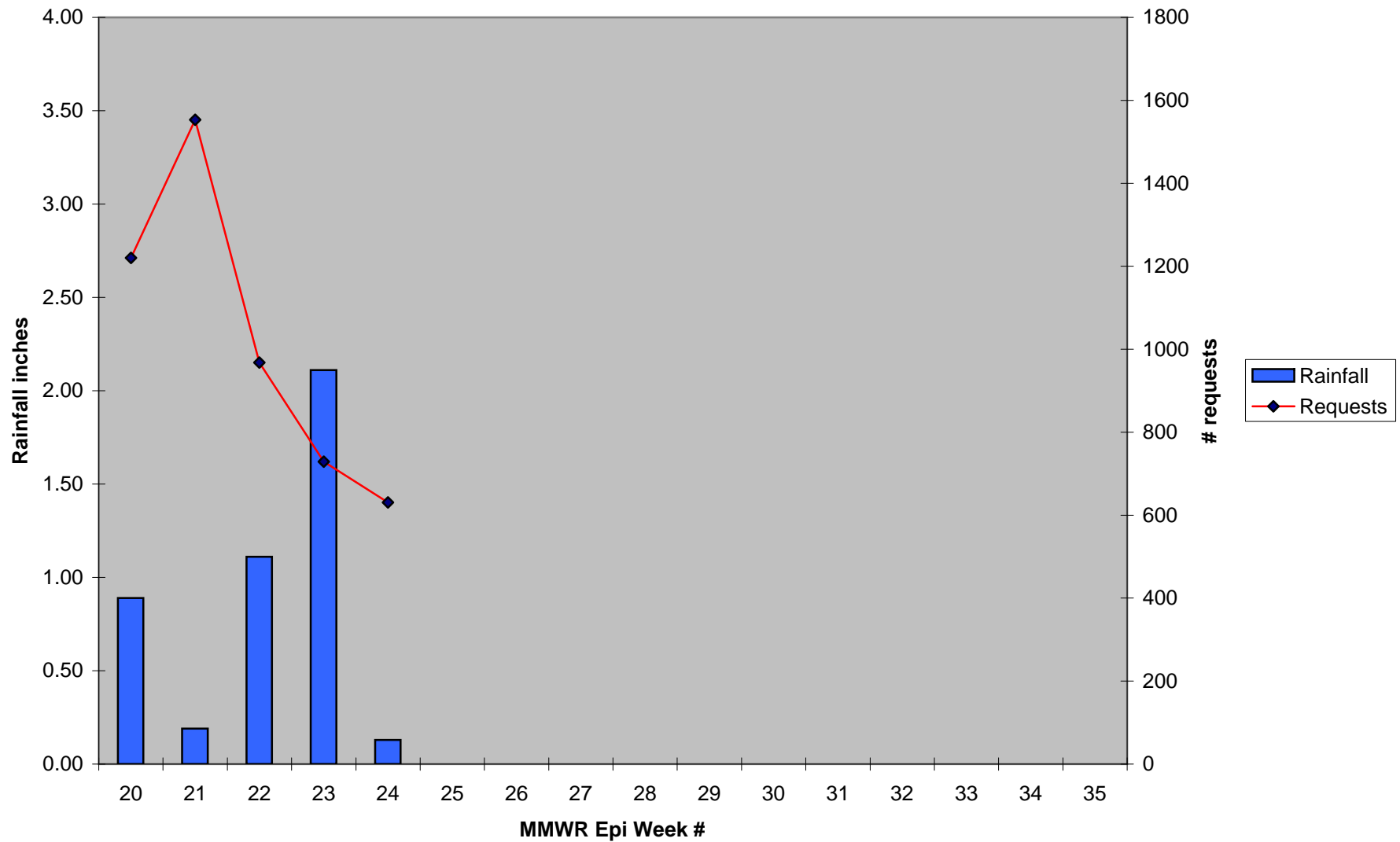
*Source: Northeast Regional Climate Center: http://www.nrcc.cornell.edu/page_summaries.html

2010 CMMCP Weekly Rainfall vs. 5 Year Average*

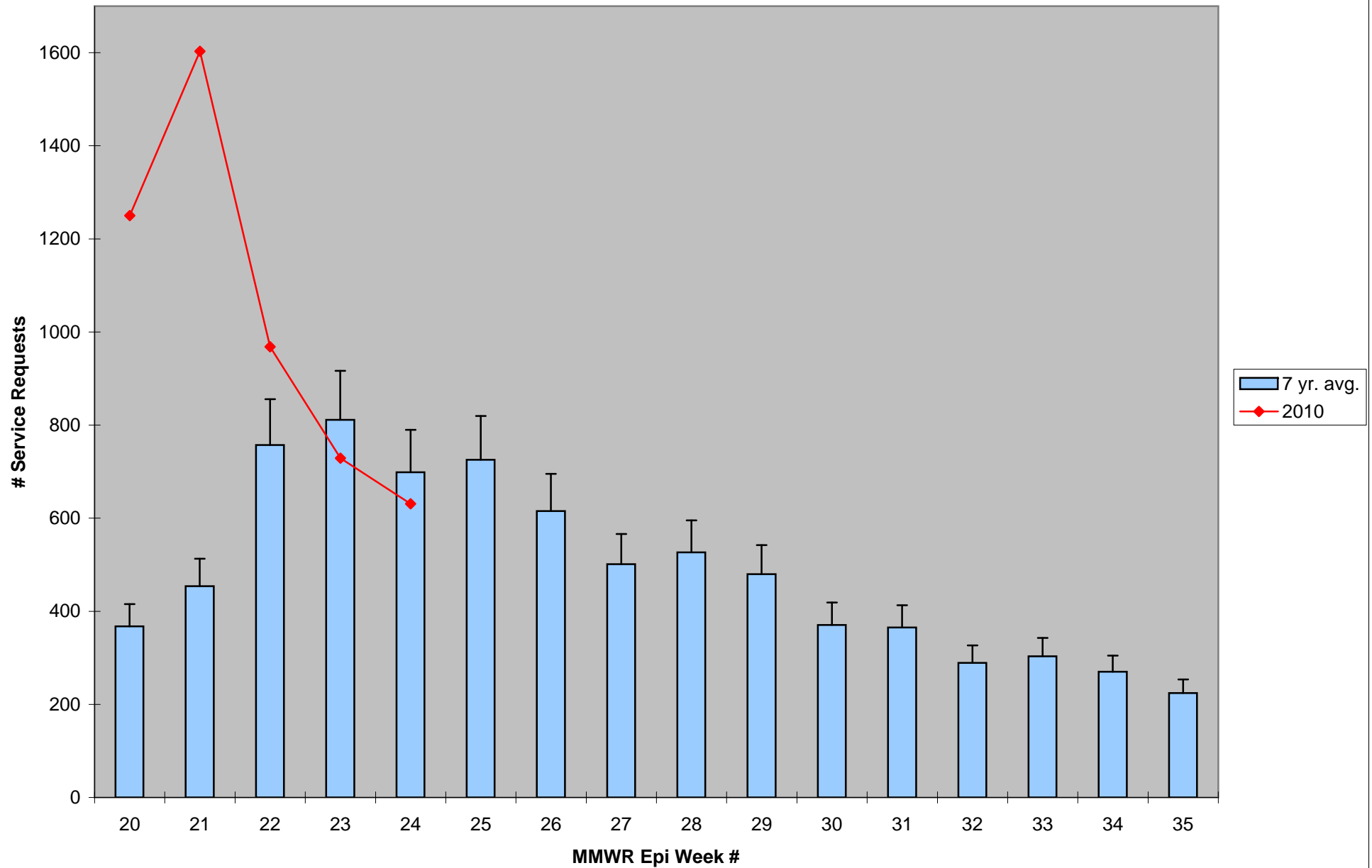


*Source: CMMCP Weather Station - Northborough, MA

2010 Rainfall vs. Requests



ULV Service Request History Comparison 2003-2010



Error bars show approx. number of requests if we had 38 cities and towns over the 6 year average