

# CMMCP WEEKLY SURVEILLANCE REPORT



**EPI week #25**  
**Jun. 20–26, 2010**

**Frank Cornine**, *Field Biologist*  
**Curtis Best**, *Staff Entomologist*  
**Tim McGlinchy**, *Director of Operations*  
**Tim Deschamps**, *Executive Director*

**Central Mass. Mosquito Control Project**  
**Weekly Report- 6/20/10-6/26/10**  
**EPI Week #25**

**Cumulative Surveillance Summary**

<b>Target Species</b>	<b><i>Ae. vex</i></b>	<b><i>Cq. per</i></b>	<b><i>Cs. mel</i></b>	<b><i>Oc. can</i></b>	<b><i>Culex</i></b>	<b>All Species</b>
<b>No. Pools</b>	4	70	79	55	198	732
<b>Total Specimens</b>	6	2191	437	369	1841	5748
<b>No. Pools WNV +</b>	0	0	0	0	0	0
<b>No. Pools EEE +</b>	0	0	0	0	0	0

**Weather Summary (Northborough, MA):** The weather for this particular week averaged 74.19°F with a recorded high temperature of 91.2°F and a recorded low temperature of only 57.6°F. For this week there was a total of 0.54 inches of rain observed. Compared to the previous week, it was approximately 6.86°F warmer on average, and rained about .49 inches more. June has accumulated 3.89 inches of rain, while the total rainfall for the month of May was 2.42 inches. Requests for spraying totaled 819 this week, 13% above the 7 year average of 725 for EPI week #25. This is a 30% increase from EPI week #24. For the year we have received 57% more requests; 6,000 requests to date compared to the 7 year average of 3,813.

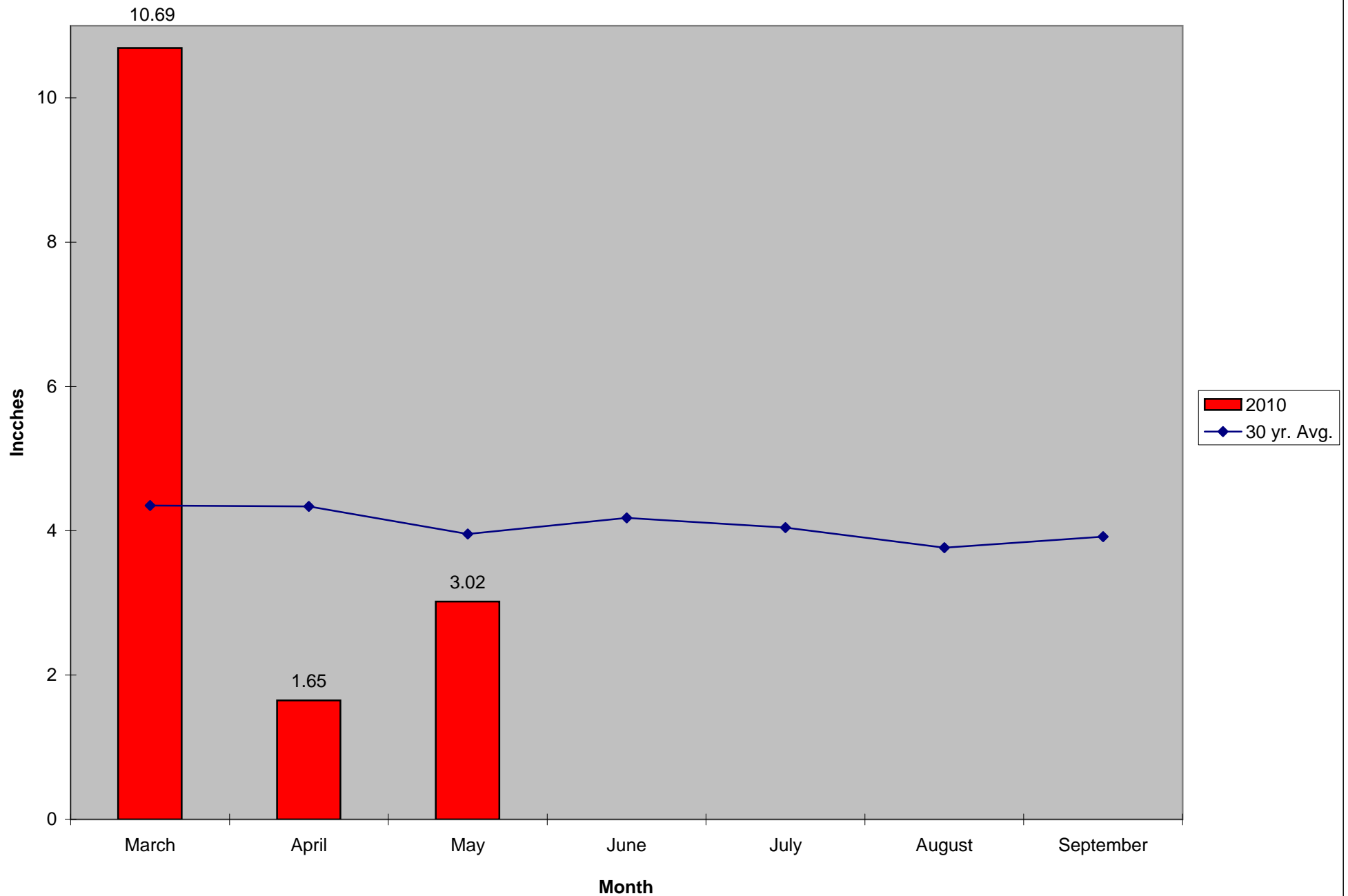
**CMMCP Mosquito Summary\*-**

**Target Species                      Δ From                      Δ From                      Predominant Trap Site(s)**  
**Last Week                      Last Year**

<i>Aedes vexans</i>	-100.0%	-100.0%	N/A
<i>Coquillettidia perturbans</i>	+41.58%	+117.5%	Shrewsbury, Stow
<i>Culiseta melanura</i>	-6.580%	-56.44%	Holliston
<i>Ochlerotatus canadensis</i>	+707.7%	+75.00%	Hopkinton
<i>Culex</i> Species	+82.92%	+221.3%	Southborough, Hopedale
All Species	+54.89%	+85.64%	Shrewsbury, Holliston

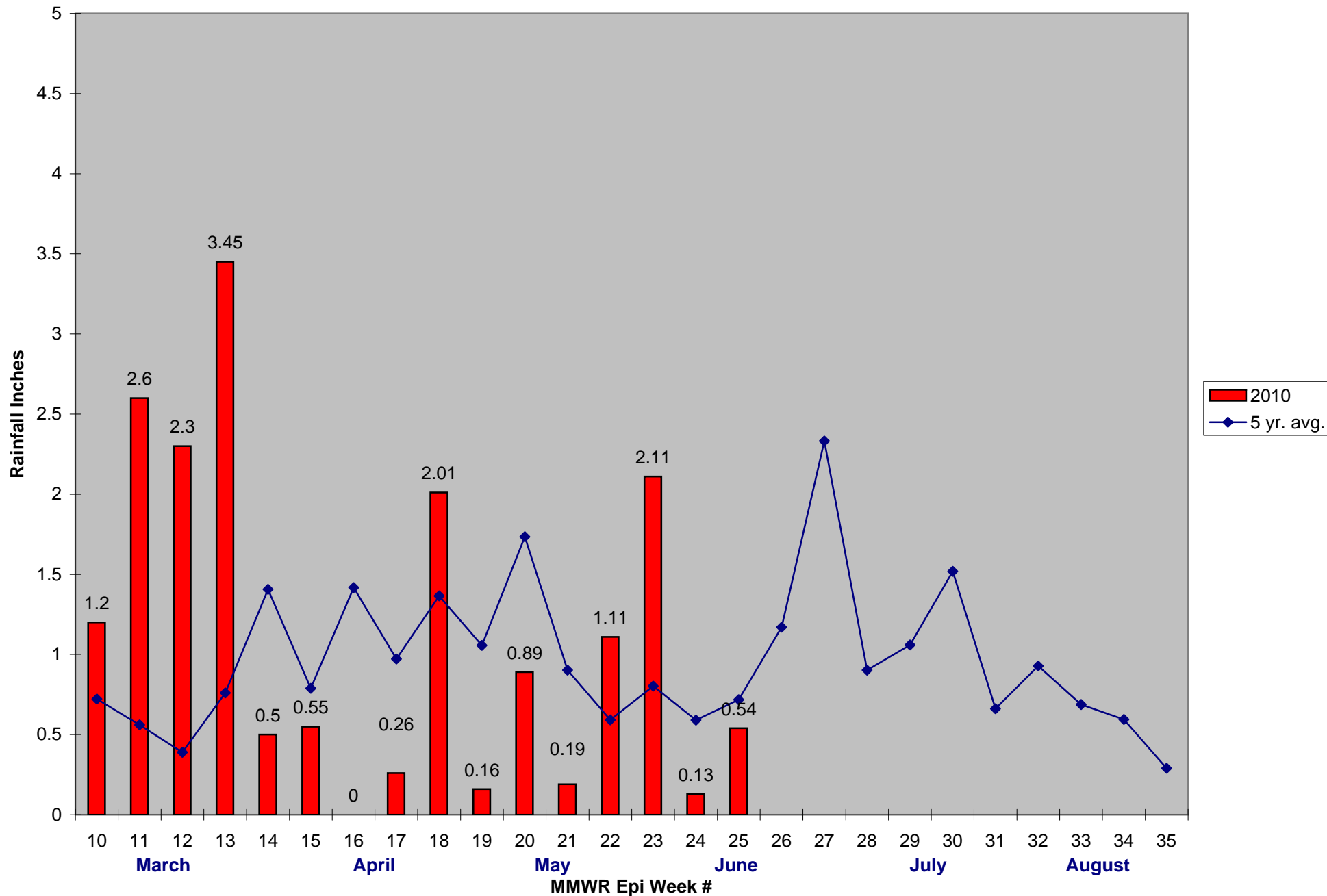
The predominant mosquito for the week was *Coquillettidia perturbans*.

### 2010 Mass. Rainfall Data vs. 30 Year Average\*



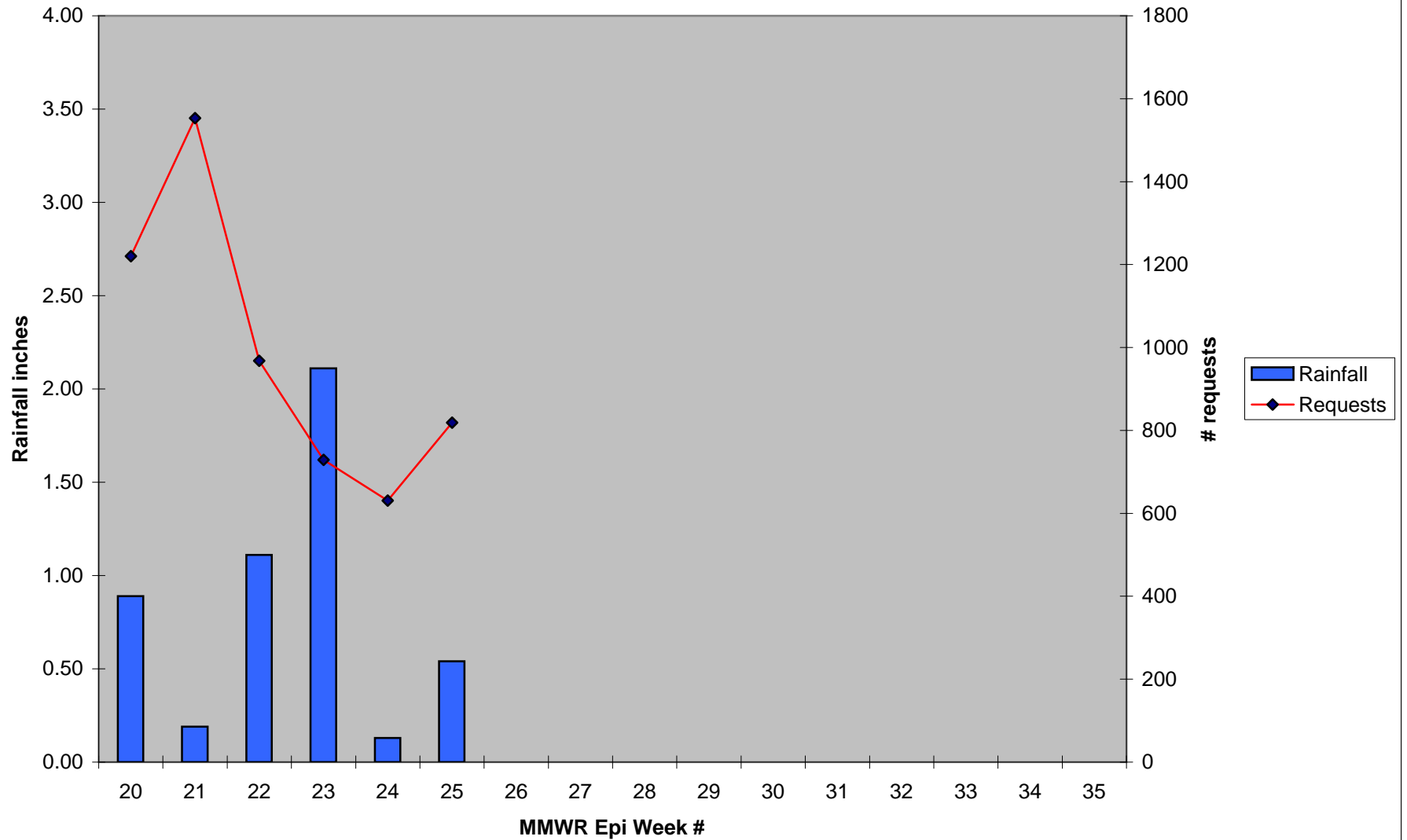
\*Source: Northeast Regional Climate Center: [http://www.nrcc.cornell.edu/page\\_summaries.html](http://www.nrcc.cornell.edu/page_summaries.html)

2010 CMMCP Weekly Rainfall vs. 5 Year Average\*

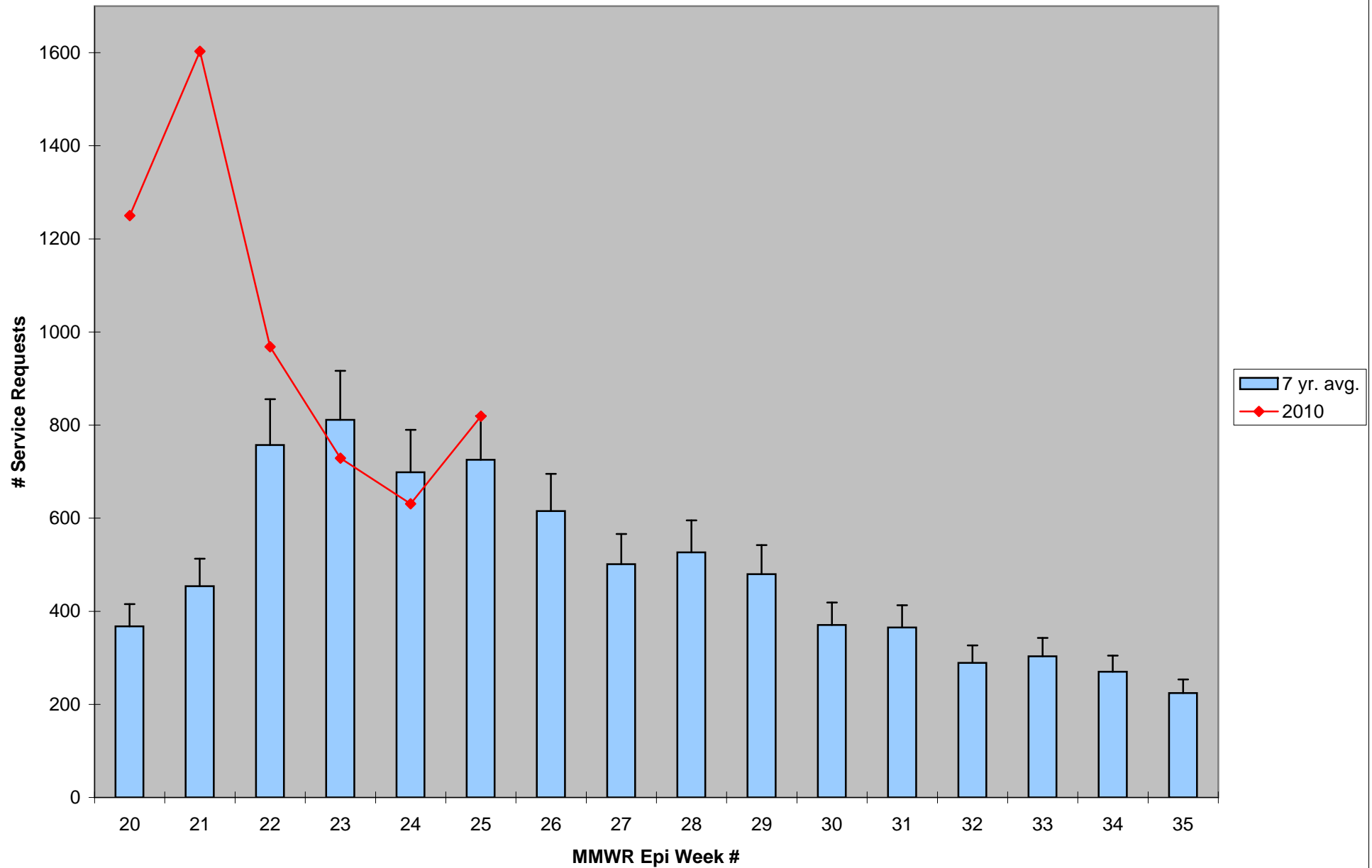


\*Source: CMMCP Weather Station - Northborough, MA

2010 Rainfall vs. Requests



### ULV Service Request History Comparison 2003-2010



Error bars show approx. number of requests if we had 38 cities and towns over the 7 year average