

CMMCP WEEKLY SURVEILLANCE REPORT



EPI week #27
Jul. 4 – 10, 2010

Frank Cornine, *Field Biologist*
Curtis Best, *Staff Entomologist*
Tim McGlinchy, *Director of Operations*
Tim Deschamps, *Executive Director*

Central Mass. Mosquito Control Project
Weekly Report- 7/4/10-7/10/10
EPI Week #27

Cumulative Surveillance Summary

Target Species	<i>Ae. vex</i>	<i>Cq. per</i>	<i>Cs. mel</i>	<i>Oc. can</i>	<i>Culex</i>	All Species
No. Pools	9	108	104	65	288	1067
Total Specimens	25	4270	515	387	2922	9480
No. Pools WNV +	0	0	0	0	0	0
No. Pools EEE +	0	0	0	0	0	0

Weather Summary (Northborough, MA): The weather for this particular week averaged 80.7°F with a recorded high temperature of 99.9°F and a recorded low temperature of only 60.3°F. For this week there was a total of 0.18 inches of rain observed. Compared to the previous week, it was approximately 8.99°F warmer on average, and rained 0.18 inches more. July has accumulated only 0.18 inches of rain, while the total rainfall for the month of June was 3.54 inches. Requests for spraying totaled 504 this week, about even with the 7 year average of 501 for EPI week #27. This is a 22% decrease from EPI week #26. For the year we have received 44% more requests; 7,120 requests to date compared to the 7 year average of 4,929.

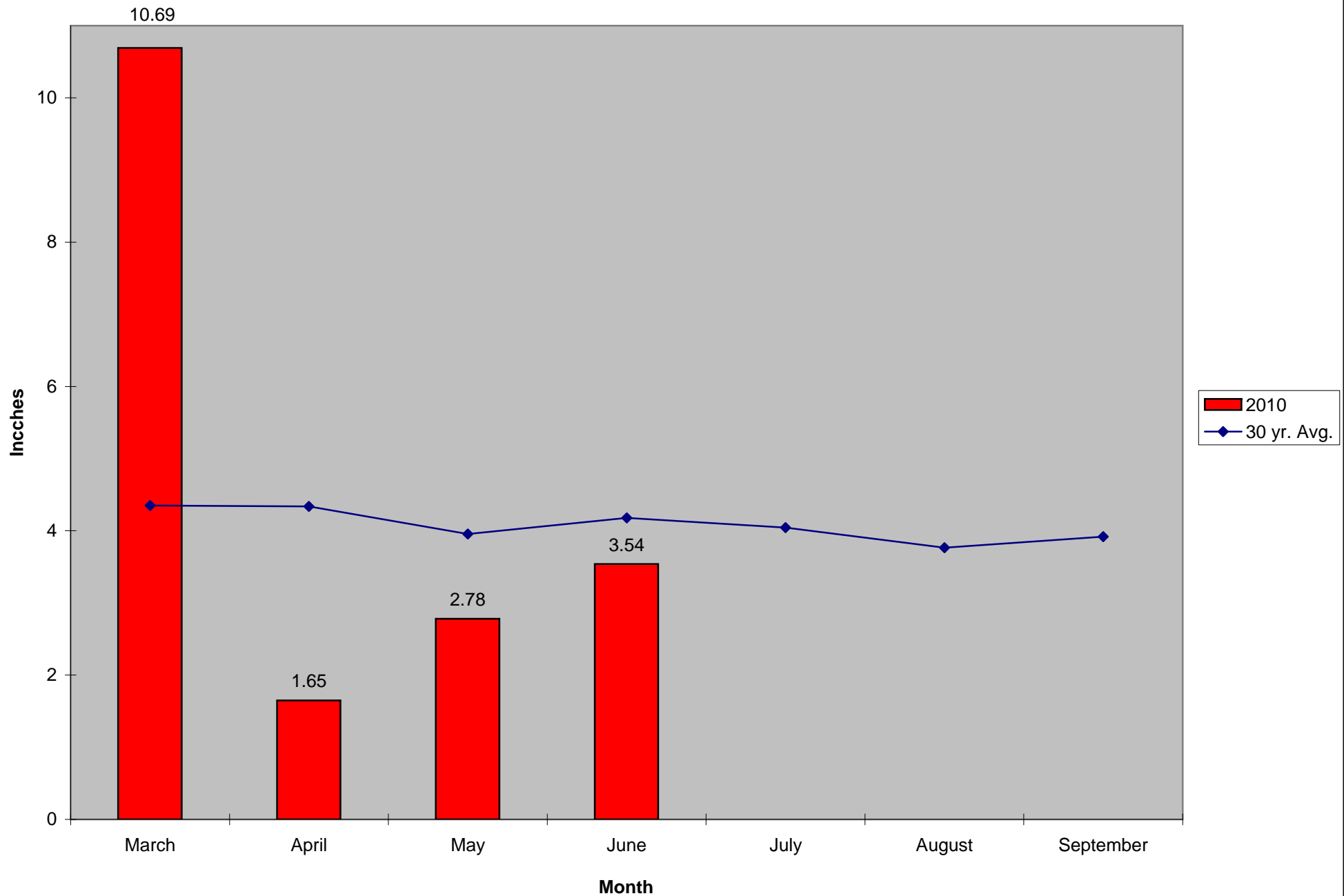
CMMCP Mosquito Summary*-

Target Species Δ From Δ From Predominant Trap Site(s)
Last Week Last Year

<i>Aedes vexans</i>	+300.0%	+50.00%	Hopkinton, Shrewsbury
<i>Coquillettidia perturbans</i>	-13.67%	+9.090%	Auburn, Acton
<i>Culiseta melanura</i>	-75.00%	-93.33%	Holliston
<i>Ochlerotatus canadensis</i>	-71.43%	-33.33%	Auburn, Shrewsbury
<i>Culex</i> Species	-21.37%	+41.10%	Westford, Northbridge
All Species	-17.67%	-2.970%	Holliston, Auburn, Acton

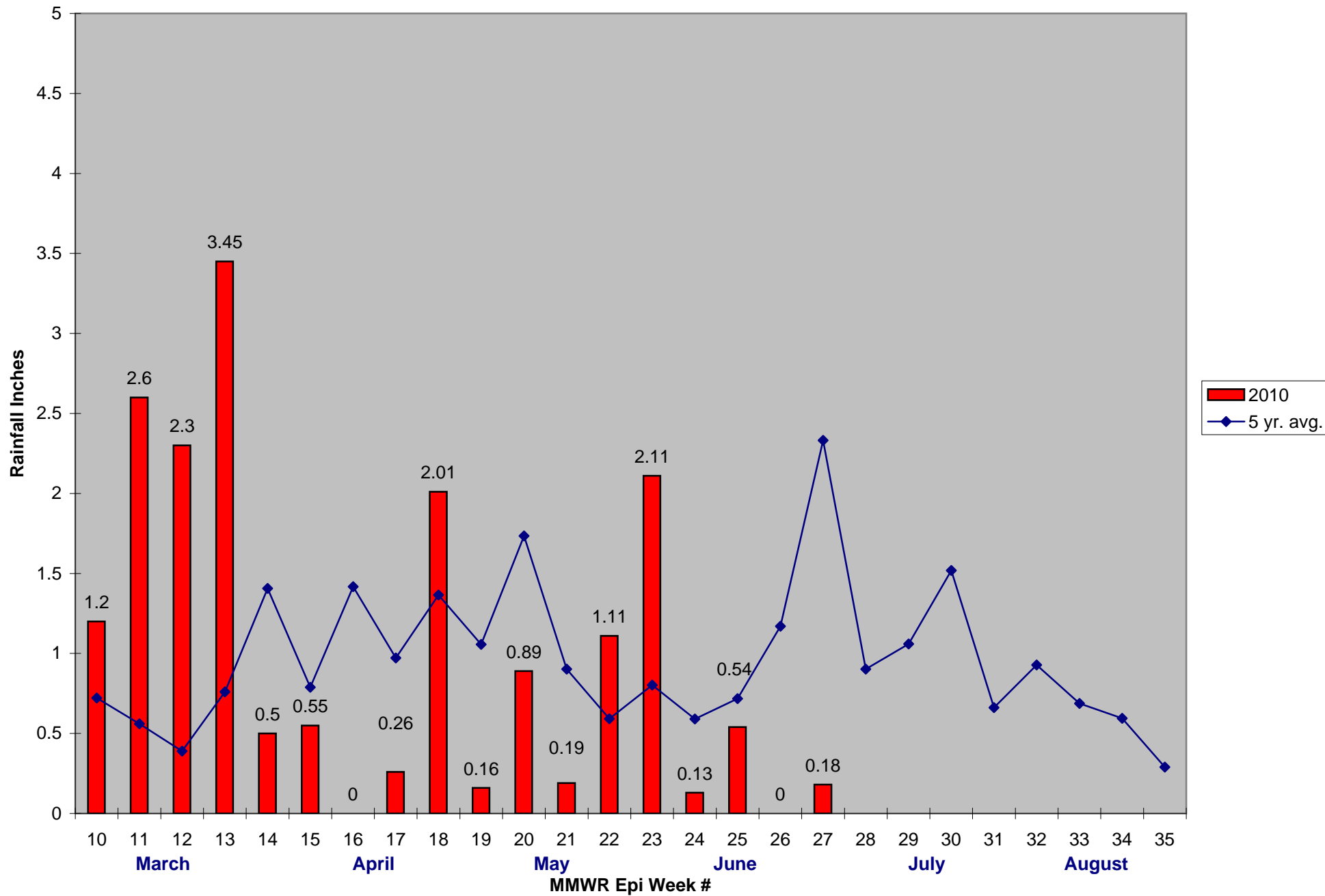
The predominant mosquito for the week was *Coquillettidia perturbans*.

2010 Mass. Rainfall Data vs. 30 Year Average*



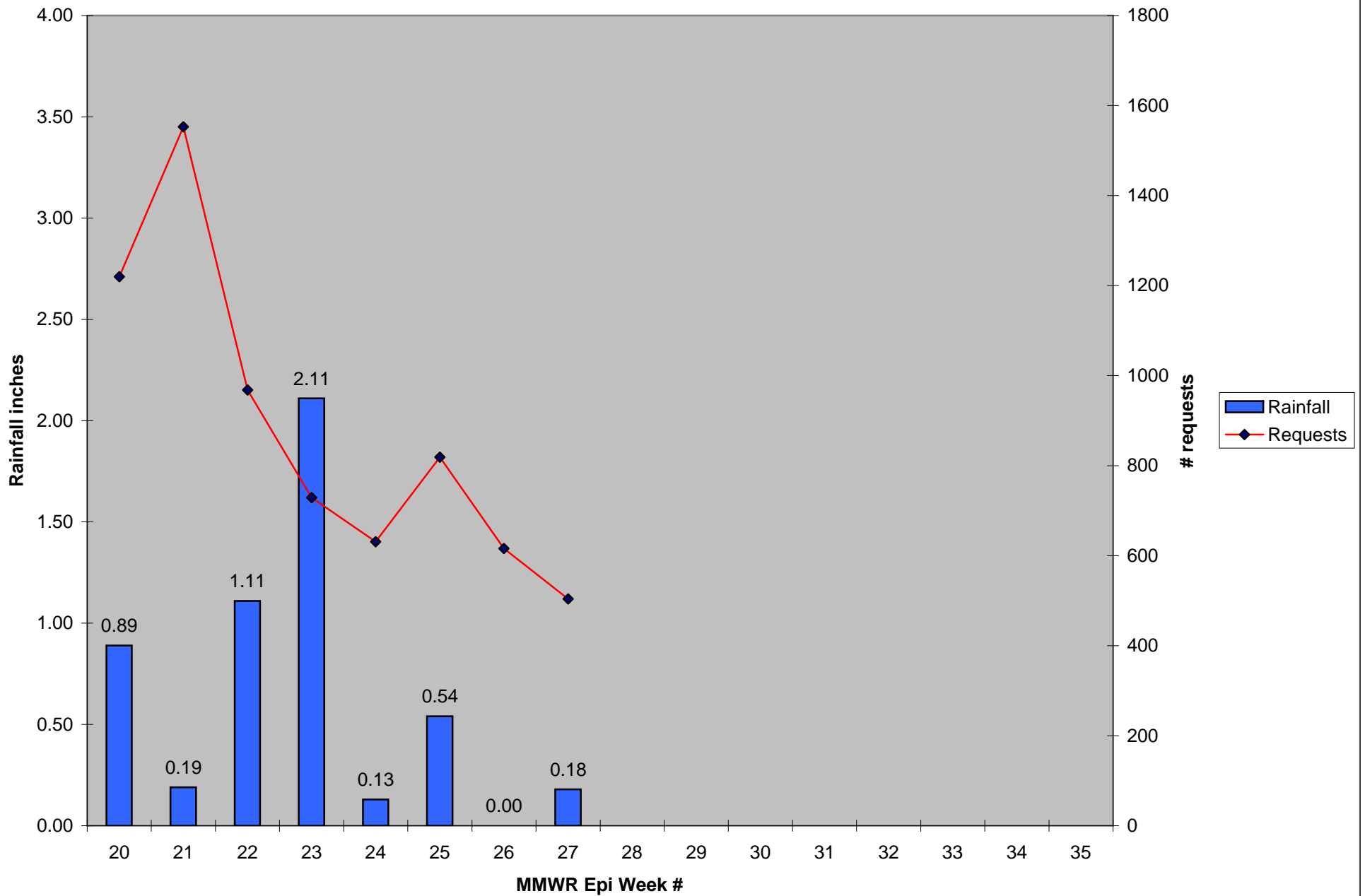
*Source: Northeast Regional Climate Center: http://www.nrcc.cornell.edu/page_summaries.html

2010 CMMCP Weekly Rainfall vs. 5 Year Average*

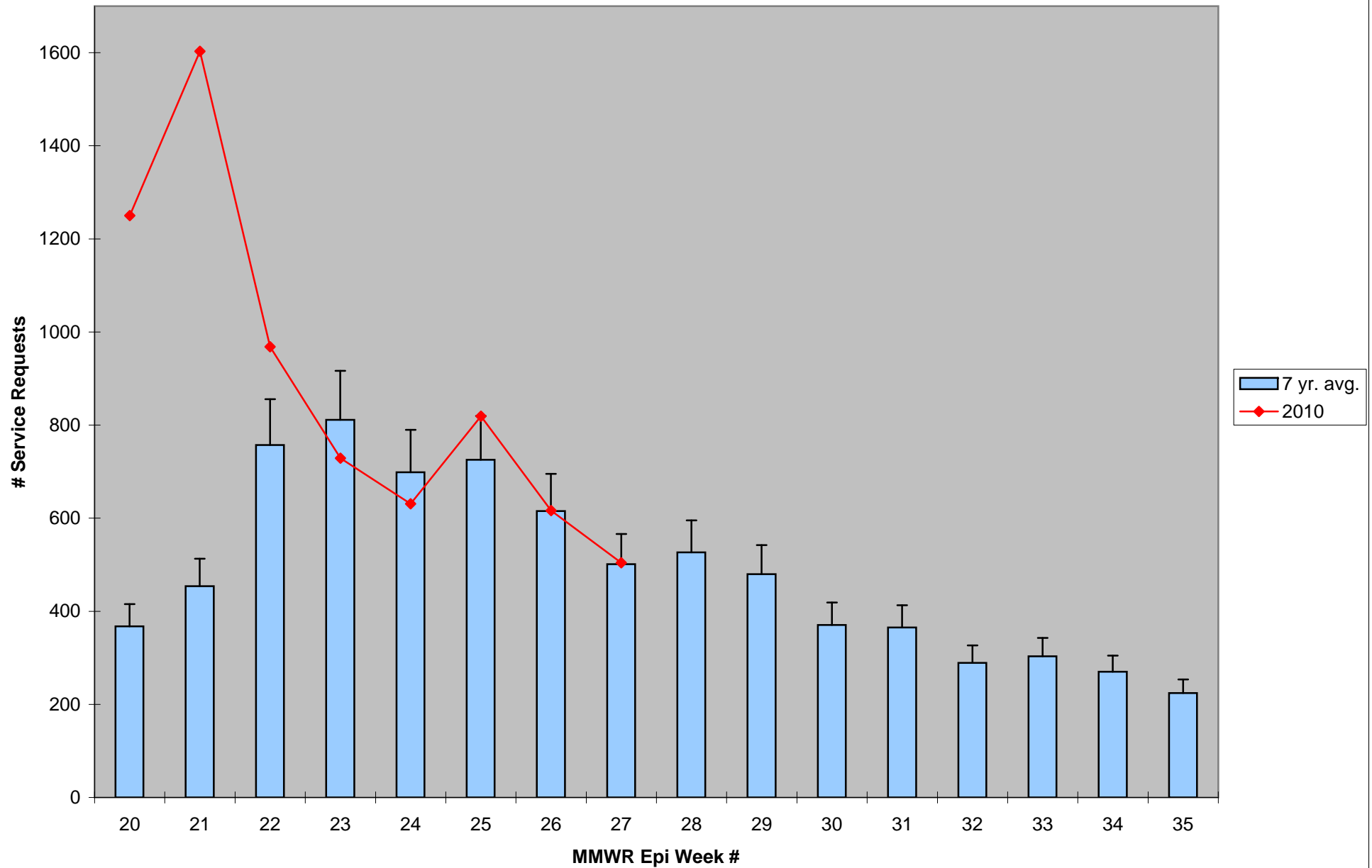


*Source: CMMCP Weather Station - Northborough, MA

2010 Rainfall vs. Requests



ULV Service Request History Comparison 2003-2010



Error bars show approx. number of requests if we had 38 cities and towns over the 7 year average