

# CMMCP WEEKLY SURVEILLANCE REPORT



**EPI week #28**  
**Jul. 11 – 17, 2010**

**Frank Cornine**, *Field Biologist*  
**Curtis Best**, *Staff Entomologist*  
**Tim McGlinchy**, *Director of Operations*  
**Tim Deschamps**, *Executive Director*

**Central Mass. Mosquito Control Project**  
**Weekly Report- 7/11/10-7/17/10**  
**EPI Week #28**

**Cumulative Surveillance Summary**

<b>Target Species</b>	<b><i>Ae. vex</i></b>	<b><i>Cq. per</i></b>	<b><i>Cs. mel</i></b>	<b><i>Oc. can</i></b>	<b><i>Culex</i></b>	<b>All Species</b>
<b>No. Pools</b>	10	132	116	67	337	1159
<b>Total Specimens</b>	26	5131	548	389	3398	11047
<b>No. Pools WNV +</b>	0	0	0	0	0	0
<b>No. Pools EEE +</b>	0	0	0	0	0	0

**Weather Summary (Northborough, MA):** The weather for this particular week averaged 76.90°F with a recorded high temperature of 92.5°F and a recorded low temperature of only 64.8°F. For this week there was a total of 0.42 inches of rain observed. Compared to the previous week, it was approximately 3.80°F cooler on average, and rained 0.25 inches more. July has accumulated only 0.59 inches of rain, while the total rainfall for the month of June was 3.54 inches. Requests for spraying totaled 437 this week, 21% less than the 7 year average of 527 for EPI week #28. This is a 15% decrease from EPI week #27. For the year we have received 38% more requests; 7,557 requests to date compared to the 7 year average of 5,456.

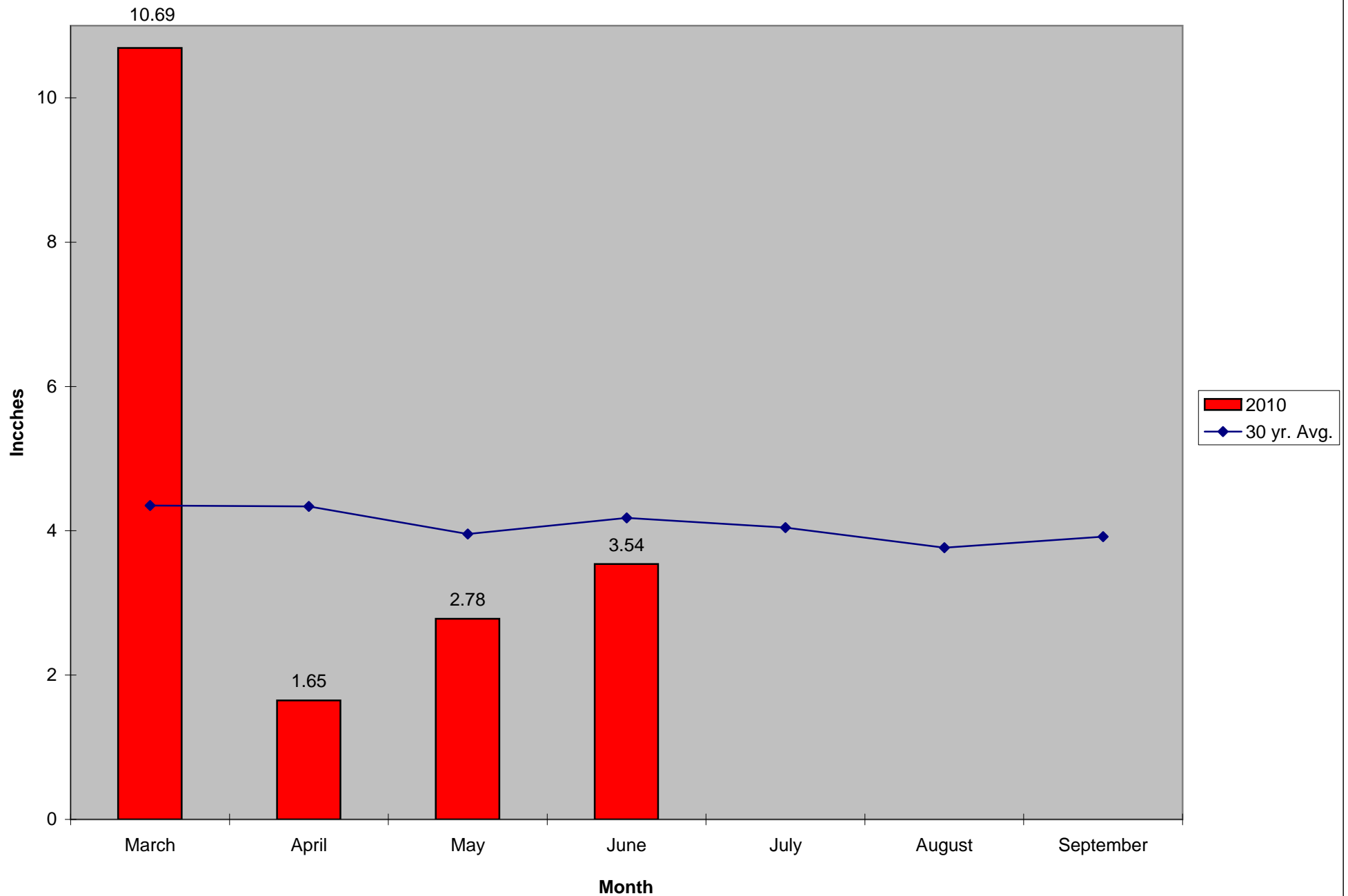
**CMMCP Mosquito Summary\*-**

**Target Species                      Δ From                      Δ From                      Predominant Trap Site(s)**  
**Last Week                      Last Year**

<i>Aedes vexans</i>	-83.33%	-98.46%	Billerica
<i>Coquillettidia perturbans</i>	+40.00%	-39.32%	Westford, Billerica
<i>Culiseta melanura</i>	+400.0%	-46.30%	Westford, Webster
<i>Ochlerotatus canadensis</i>	-50.00%	-95.92%	Westford, Webster
<i>Culex</i> Species	+51.46%	-55.61%	Chelmsford, Auburn
All Species	+41.00%	-47.58%	Westford, Billerica

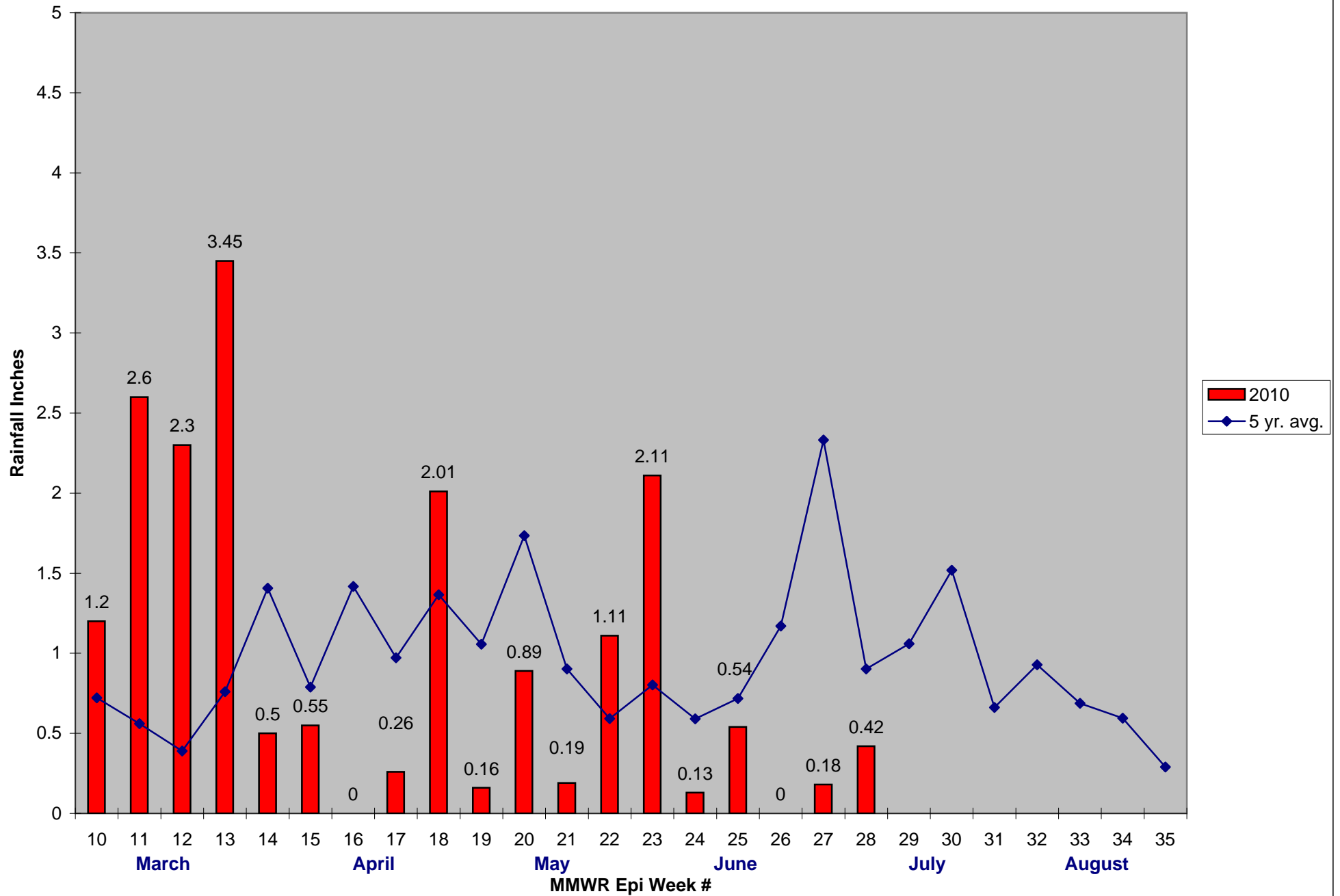
The predominant mosquito for the week was *Coquillettidia perturbans*.

### 2010 Mass. Rainfall Data vs. 30 Year Average\*



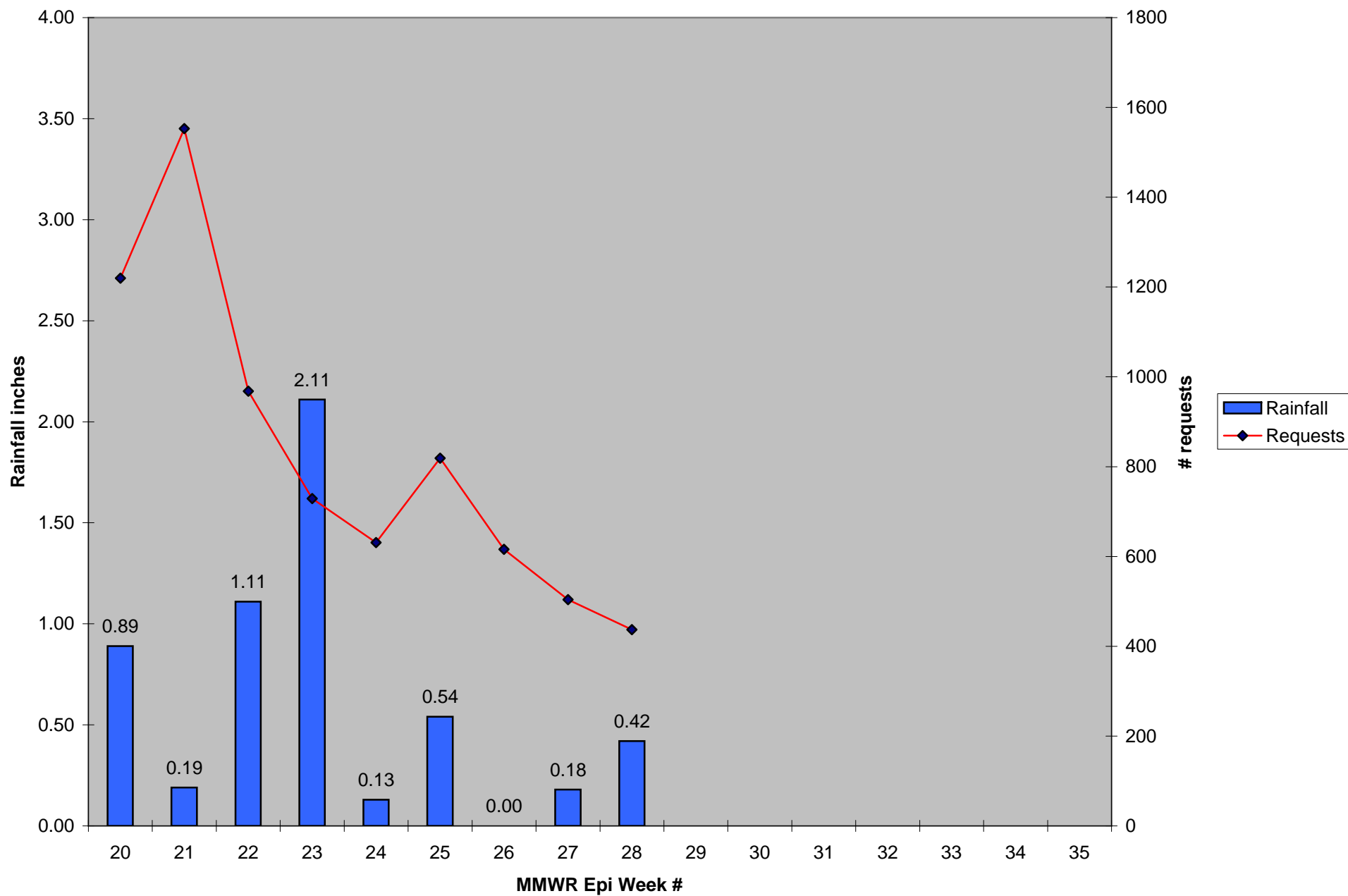
\*Source: Northeast Regional Climate Center: [http://www.nrcc.cornell.edu/page\\_summaries.html](http://www.nrcc.cornell.edu/page_summaries.html)

2010 CMMCP Weekly Rainfall vs. 5 Year Average\*

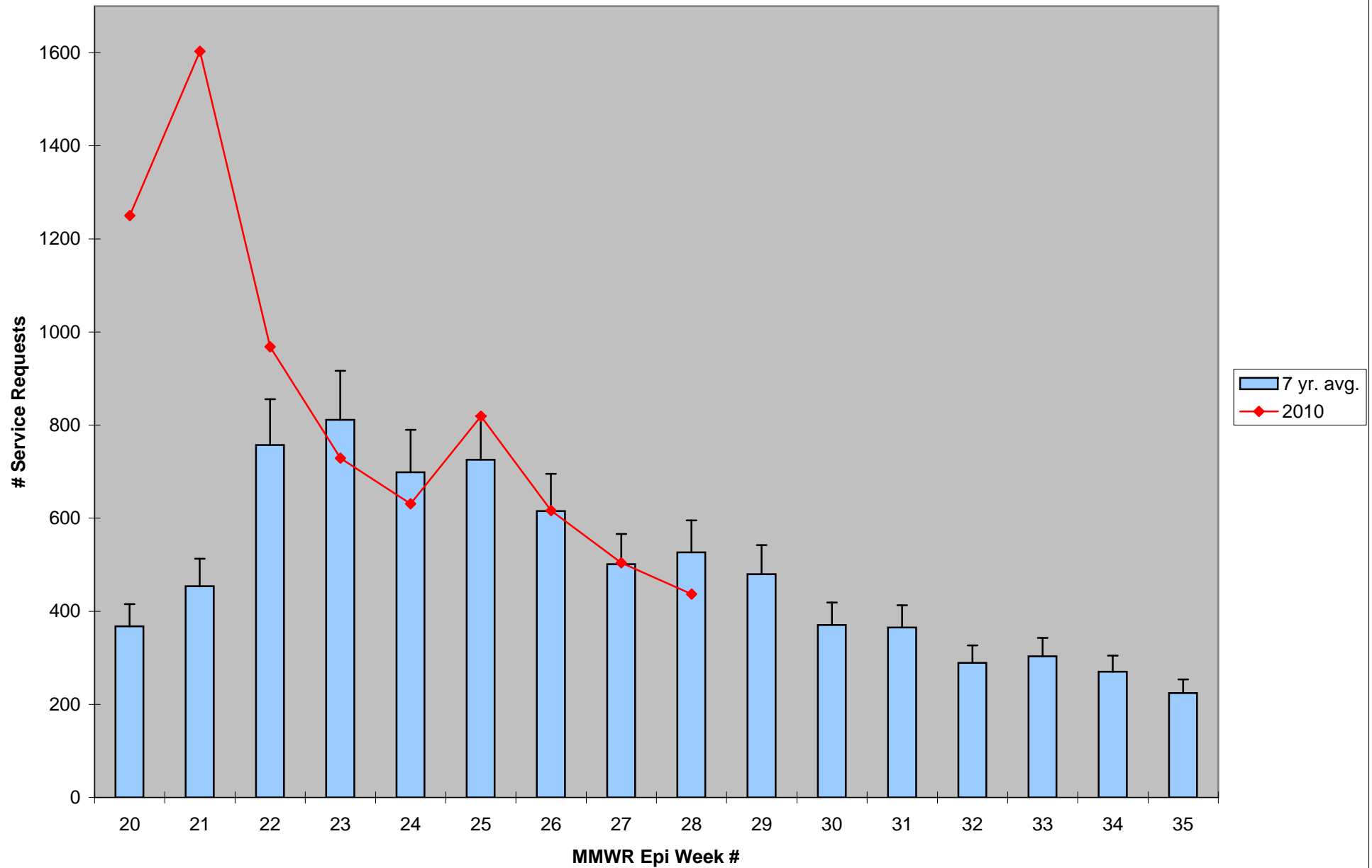


\*Source: CMMCP Weather Station - Northborough, MA

2010 Rainfall vs. Requests



### ULV Service Request History Comparison 2003-2010



Error bars show approx. number of requests if we had 38 cities and towns over the 7 year average