

CMMCP WEEKLY SURVEILLANCE REPORT



EPI week #29
Jul. 18 – 24, 2010

Frank Cornine, *Field Biologist*
Curtis Best, *Staff Entomologist*
Tim McGlinchy, *Director of Operations*
Tim Deschamps, *Executive Director*

Central Mass. Mosquito Control Project
Weekly Report- 7/18/10-7/24/10
EPI Week #29

Cumulative Surveillance Summary

Target Species	<i>Ae. vex</i>	<i>Cq. per</i>	<i>Cs. mel</i>	<i>Oc. can</i>	<i>Culex</i>	All Species
No. Pools	11	148	127	68	395	1341
Total Specimens	27	6303	575	390	4353	13767
No. Pools WNV +	0	0	0	0	0	0
No. Pools EEE +	0	0	0	0	0	0

Weather Summary (Northborough, MA): The weather for this particular week averaged 74.94°F with a recorded high temperature of 90.4°F and a recorded low temperature of only 60.1°F. For this week there was a total of 0.87 inches of rain observed. Compared to the previous week, it was approximately 1.96°F cooler on average, and rained 0.45 inches more. July has accumulated only 1.46 inches of rain, while the total rainfall for the month of June was 3.54 inches. Requests for spraying totaled 355 this week, 35% less than the 7 year average of 480 for EPI week #29. This is a 23% decrease from EPI week #28. For the year we have received 33% more requests; 7,912 requests to date compared to the 7 year average of 5,936.

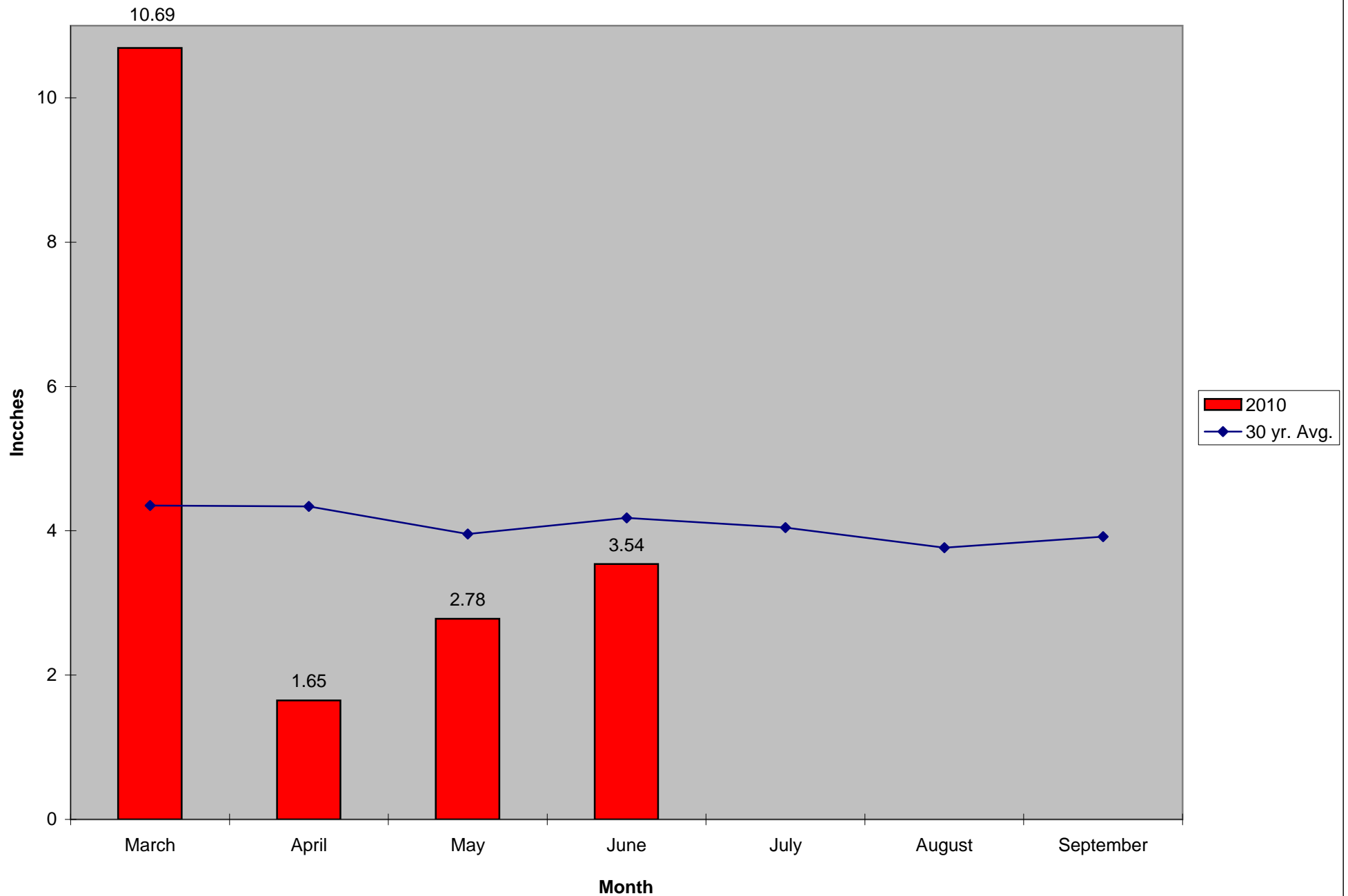
CMMCP Mosquito Summary*-

Target Species Δ From Δ From Predominant Trap Site(s)
Last Week Last Year

<i>Aedes vexans</i>	-100.0%	-100.0%	N/A
<i>Coquillettidia perturbans</i>	-21.85%	-63.88%	Acton
<i>Culiseta melanura</i>	-65.52%	-93.15%	Holliston
<i>Ochlerotatus canadensis</i>	-50.00%	-96.15%	Stow
<i>Culex</i> Species	+146.1%	+4.640%	Auburn, Westborough
All Species	+22.19%	-50.92%	Acton, Holliston, Auburn

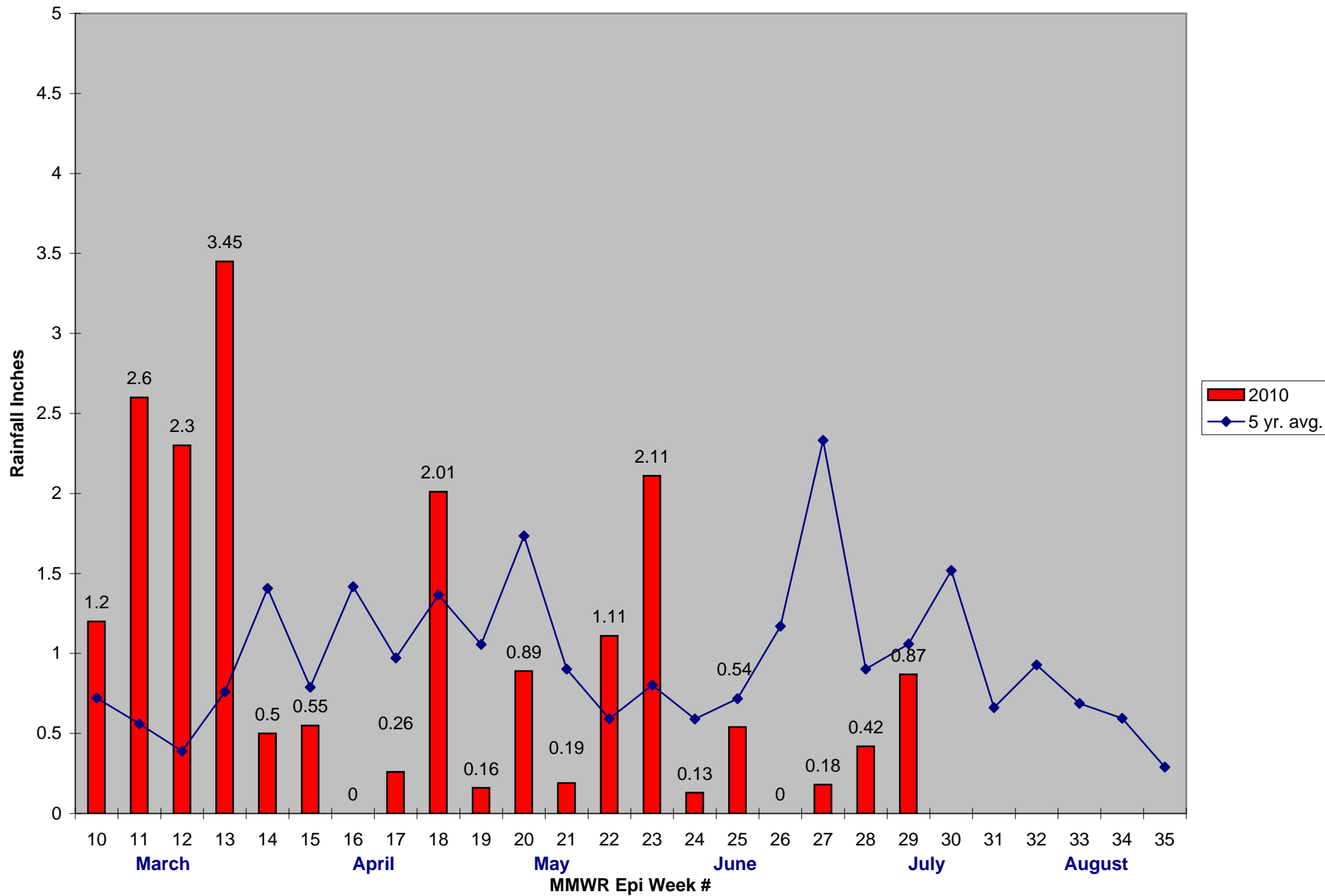
The predominant mosquito for the week was *Culex* species,
followed closely by *Coquillettidia perturbans*.

2010 Mass. Rainfall Data vs. 30 Year Average*



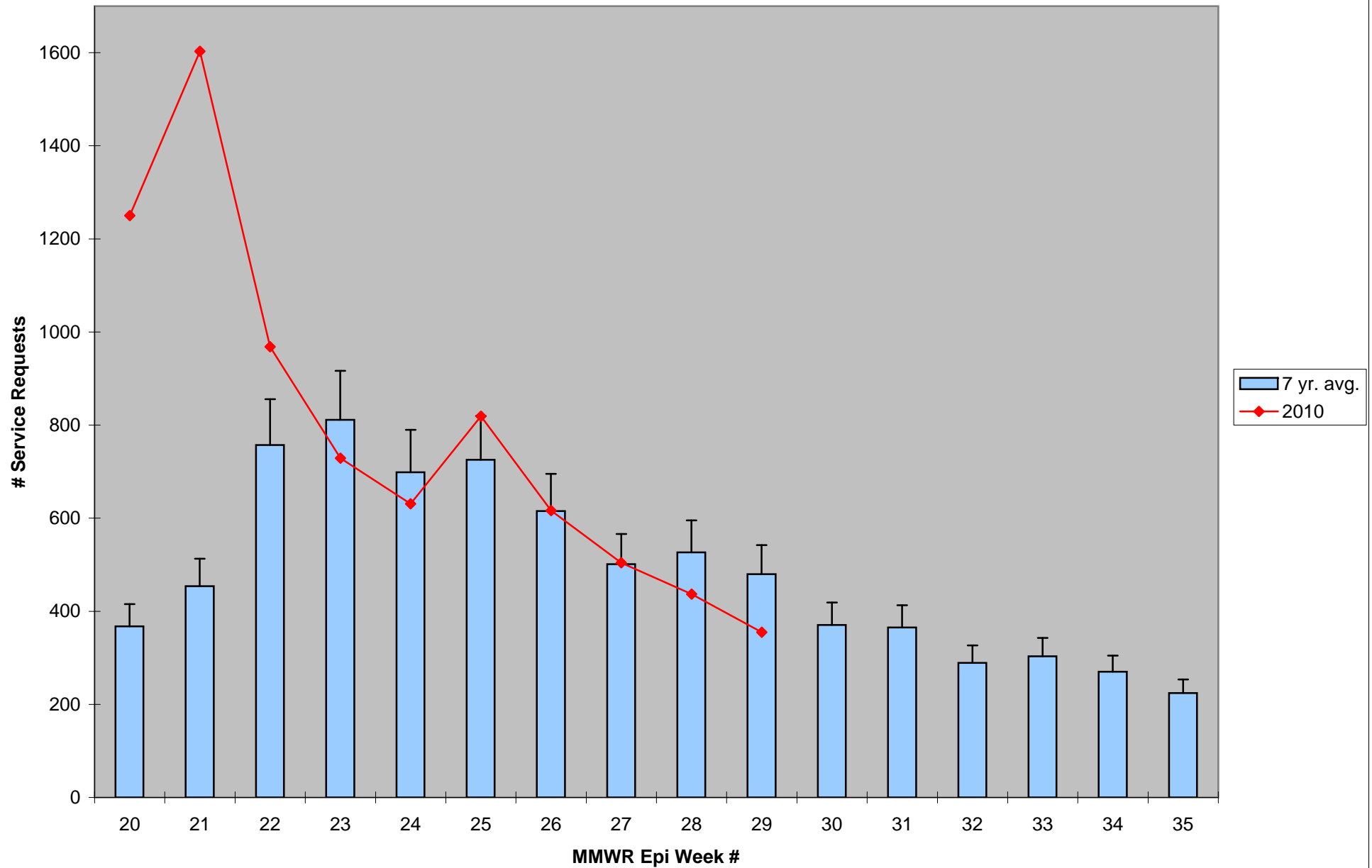
*Source: Northeast Regional Climate Center: http://www.nrcc.cornell.edu/page_summaries.html

2010 CMMCP Weekly Rainfall vs. 5 Year Average*



*Source: CMMCP Weather Station - Northborough, MA

ULV Service Request History Comparison 2003-2010



Error bars show approx. number of requests if we had 38 cities and towns over the 7 year average

2010 Rainfall vs. Requests

