

CMMCP WEEKLY SURVEILLANCE REPORT



EPI week #30
Jul. 25 – 31, 2010

Frank Cornine, *Field Biologist*
Curtis Best, *Staff Entomologist*
Tim McGlinchy, *Director of Operations*
Tim Deschamps, *Executive Director*

Central Mass. Mosquito Control Project
Weekly Report- 7/25/10-7/31/10
EPI Week #30

Cumulative Surveillance Summary

Target Species	<i>Ae. vex</i>	<i>Cq. per</i>	<i>Cs. mel</i>	<i>Oc. can</i>	<i>Culex</i>	All Species
No. Pools	16	166	134	69	448	1533
Total Specimens	50	6601	583	391	4802	14852
No. Pools WNV +	0	0	0	0	0	0
No. Pools EEE +	0	0	0	0	0	0

Weather Summary (Northborough, MA): The weather for this particular week averaged 73.63°F with a recorded high temperature of 90.7°F and a recorded low temperature of only 54.6°F. For this week there was a total of 0.02 inches of rain observed. Compared to the previous week, it was approximately 1.31°F cooler on average, and rained 0.85 inches less. July finished with 1.48 inches of rain, while the total rainfall for the month of June was 3.54 inches. Requests for spraying totaled 497 this week, 34% more than the 7 year average of 371 for EPI week #30. This is a 40% increase from EPI week #29. For the year we have received 34% more requests; 8,409 requests to date compared to the 7 year average of 6,307.

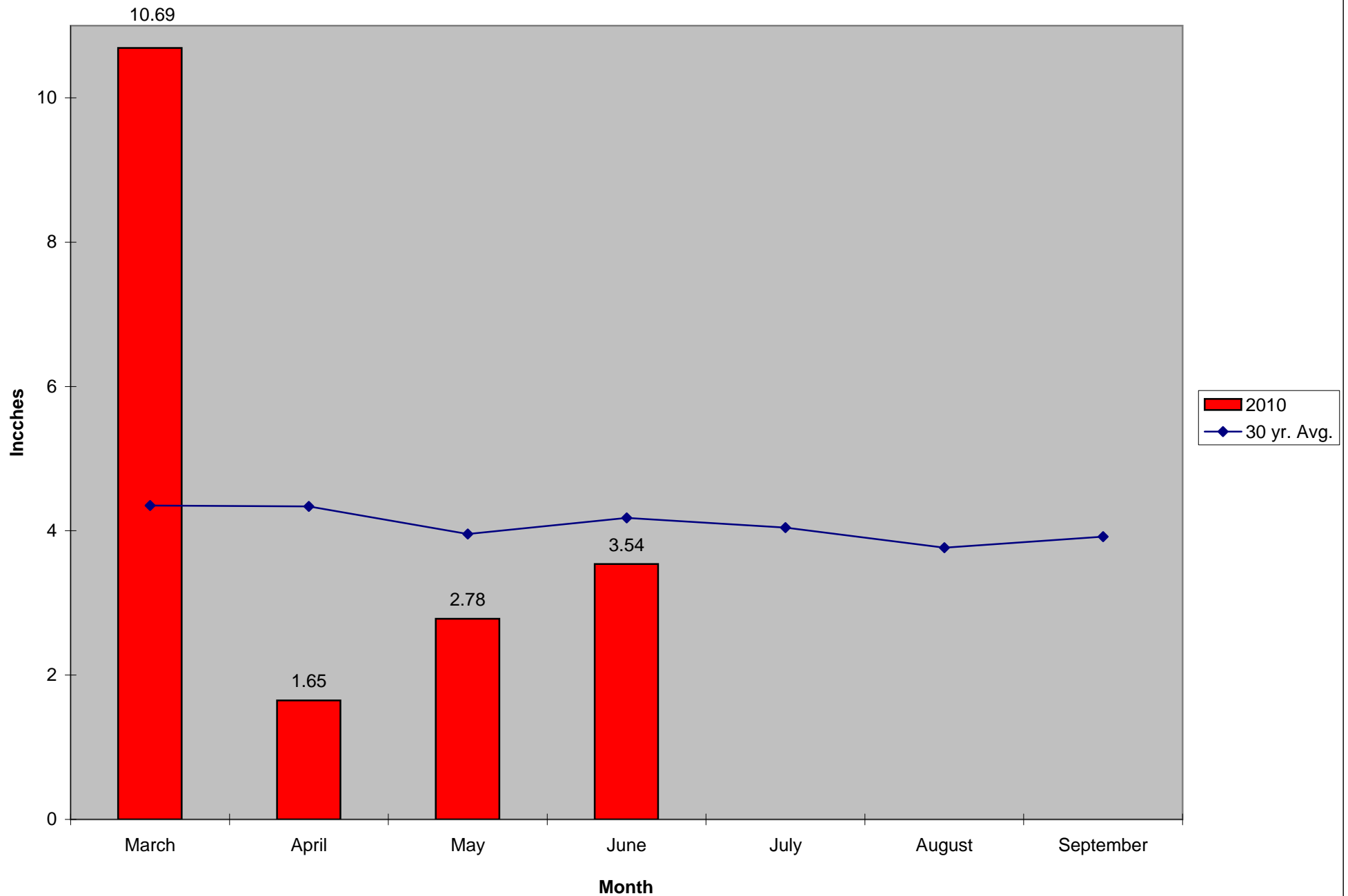
CMMCP Mosquito Summary*-

Target Species	Δ From Last Week	Δ From Last Year	Predominant Trap Site(s)
<i>Aedes vexans</i>	+300%*	-92.86%	Stow
<i>Coquillettidia perturbans</i>	-65.18%	-72.05%	Stow, Billerica, Lancaster
<i>Culiseta melanura</i>	-100.0%	-100.0%	Westford
<i>Ochlerotatus canadensis</i>	+00.00%	-96.67%	Chelmsford
<i>Culex</i> Species	-74.20%	-76.15%	Auburn, Ashland, Westborough
All Species	-63.15%	-72.58%	Stow, Lancaster

The predominant mosquito for the week was *Coquillettidia perturbans*, followed by *Culex* Species.

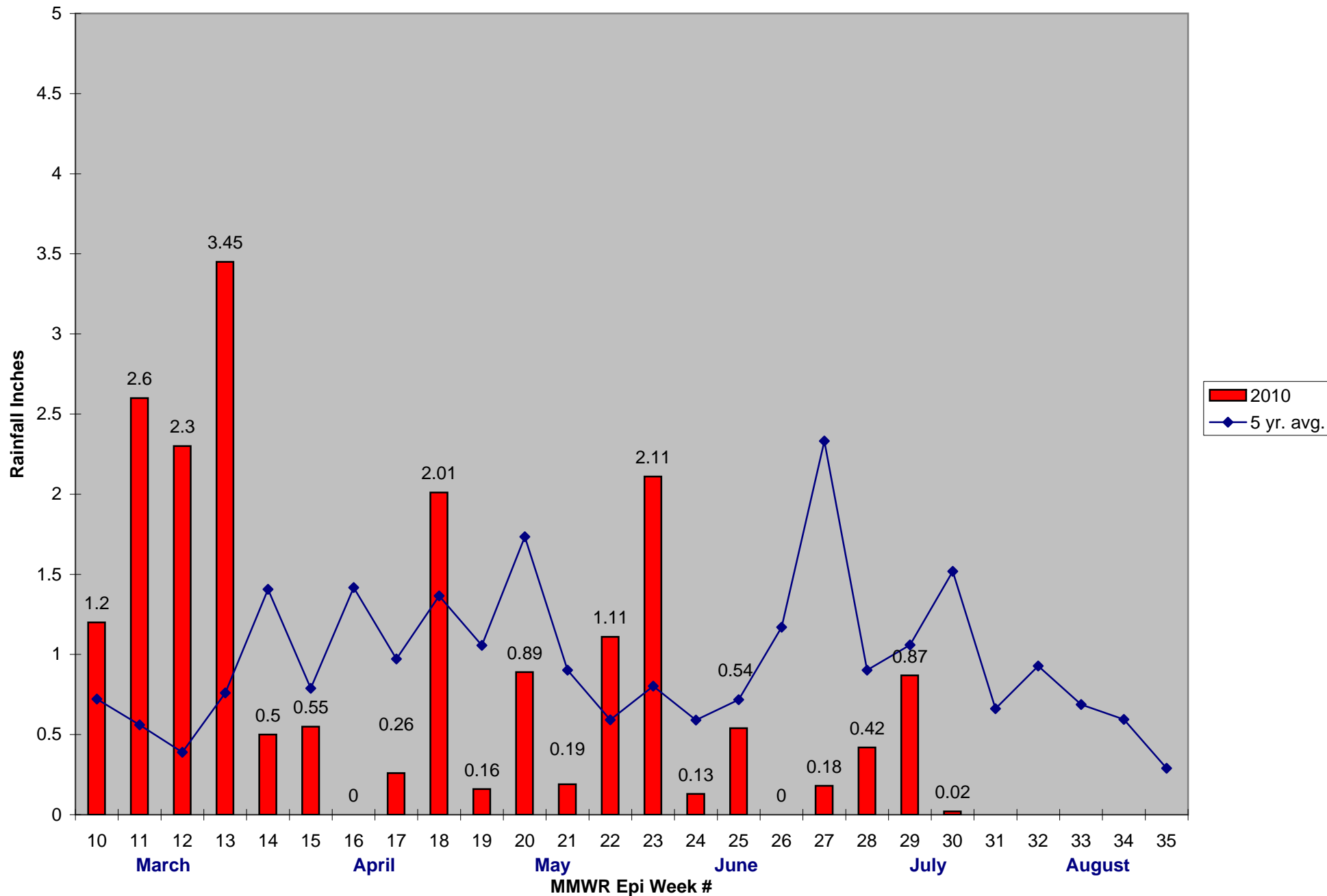
*Single digit specimens collected

2010 Mass. Rainfall Data vs. 30 Year Average*



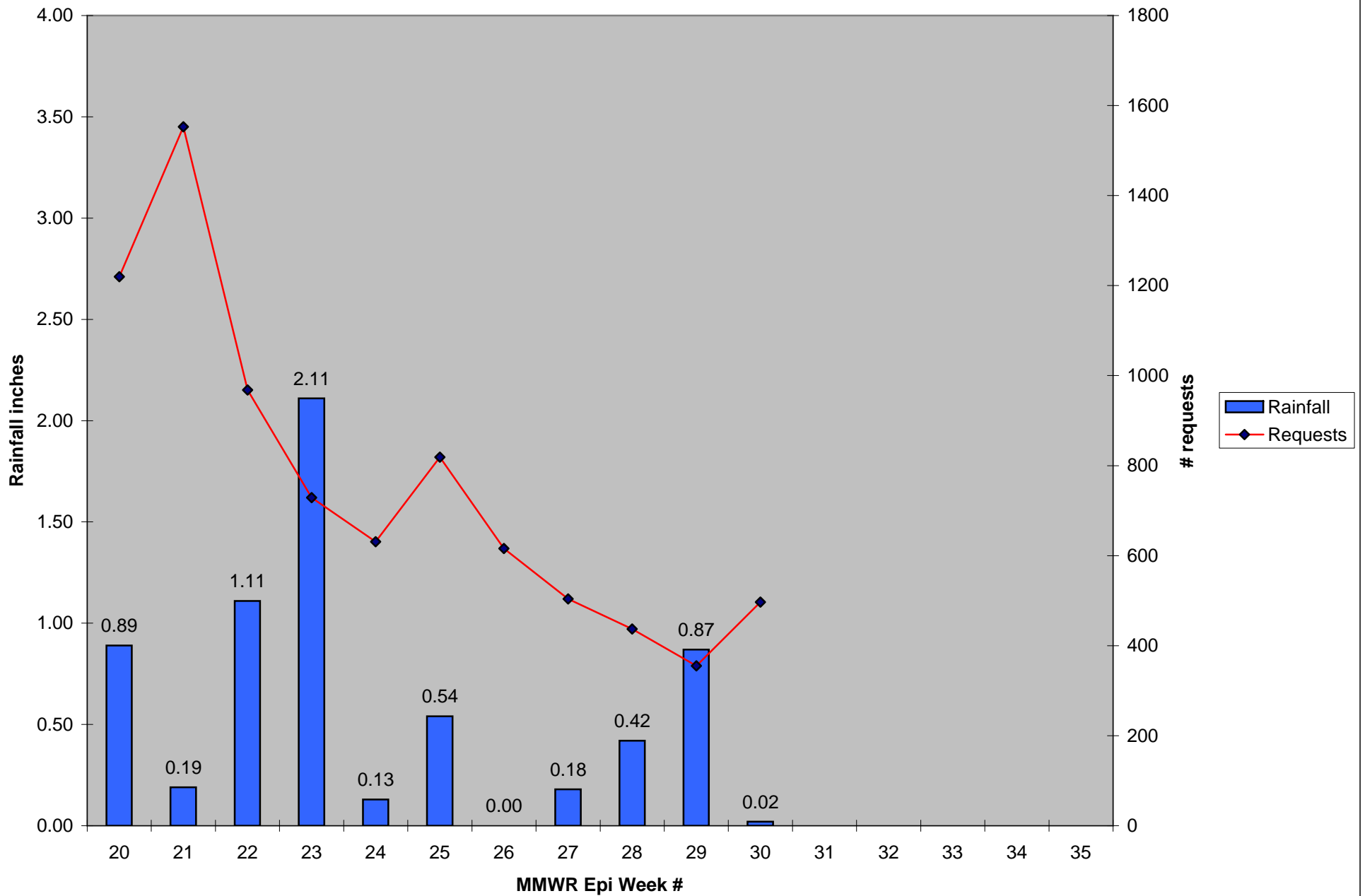
*Source: Northeast Regional Climate Center: http://www.nrcc.cornell.edu/page_summaries.html

2010 CMMCP Weekly Rainfall vs. 5 Year Average*

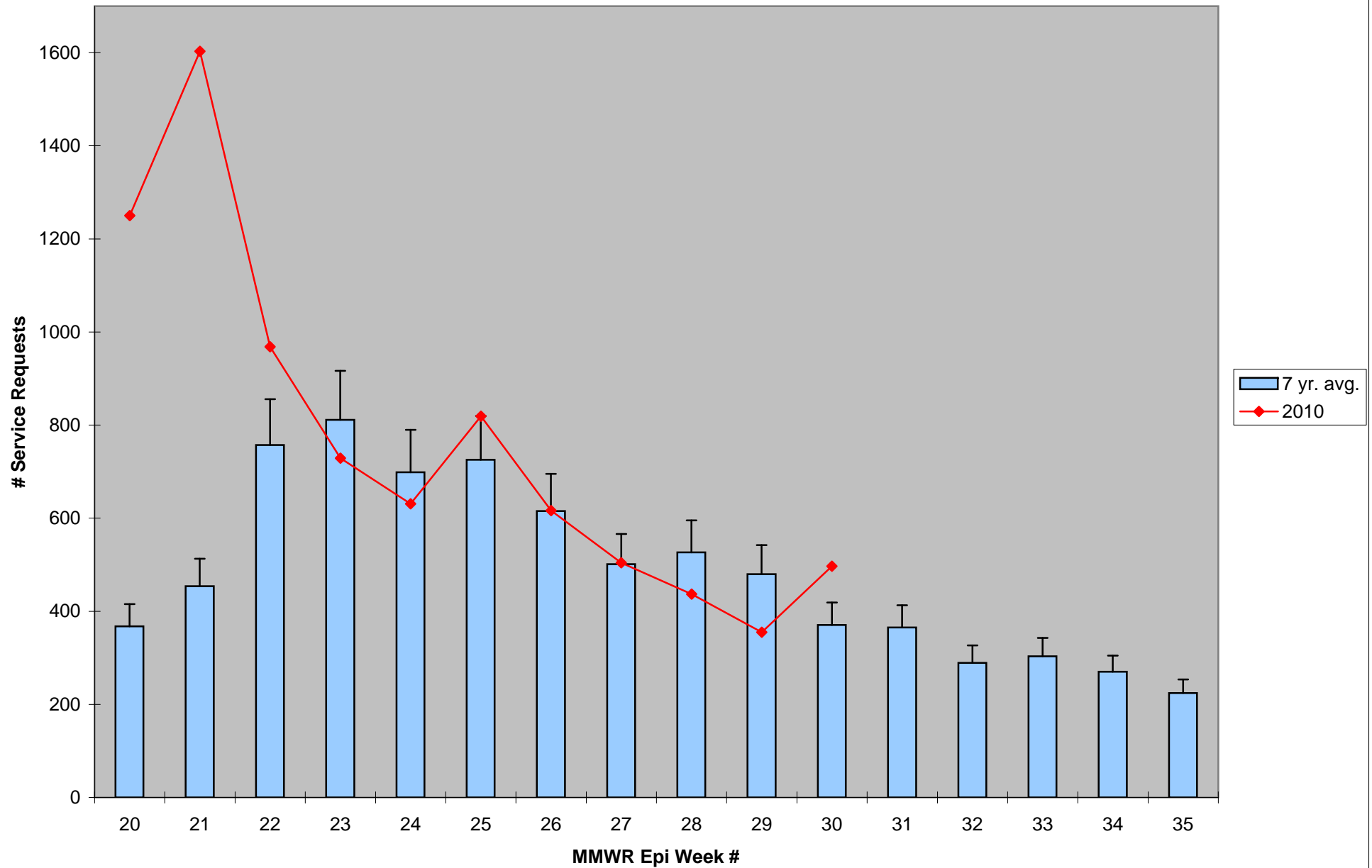


*Source: CMMCP Weather Station - Northborough, MA

2010 Rainfall vs. Requests



ULV Service Request History Comparison 2003-2010



Error bars show approx. number of requests if we had 38 cities and towns over the 7 year average