

CMMCP WEEKLY SURVEILLANCE REPORT



EPI week #34
Aug. 22 – 28, 2010

Frank Cornine, *Field Biologist*
Curtis Best, *Staff Entomologist*
Tim McGlinchy, *Director of Operations*
Tim Deschamps, *Executive Director*

Central Mass. Mosquito Control Project
Weekly Report- 8/22/10-8/28/10
EPI Week #34

Cumulative Surveillance Summary

Target Species	<i>Ae. vex</i>	<i>Cq. per</i>	<i>Cs. mel</i>	<i>Oc. can</i>	<i>Culex</i>	All Species
No. Pools	35	243	166	73	671	2298
Total Specimens	178	8329	660	421	8412	22587
No. Pools WNV +	0	0	0	0	6*	6*
No. Pools EEE +	0	0	0	0	0	0

*Pool of WNV+ *Culex* Species collected in Berlin on 7/29/10

*Pool of WNV+ *Culex* Species collected in Auburn on 8/4/10

*Pool of WNV+ *Culex* Species collected in Auburn on 8/4/10

*Pool of WNV+ *Culex* Species collected in Auburn on 8/4/10

*Pool of WNV+ *Culex* Species collected in Chelmsford on 8/11/10

*Pool of WNV+ *Culex* Species collected in Auburn on 8/13/10

*Horse in Lancaster tested positive for EEE, onset date of 8/12/10

Weather Summary (Northborough, MA): The weather for this particular week averaged 64.87°F with a recorded high temperature of 82.9°F and a recorded low temperature of only 49.1°F. For this week there was a total of 2.09 inches of rain observed. Compared to the previous week, it was approximately 7.43°F cooler on average, and rained 1.98 inches more. There has been 2.50 inches of rain accumulated in August. July finished with 1.48 inches of rain, while the total rainfall for the month of June was 3.54 inches. Requests for spraying totaled 173 this week, 56% less than the 7 year average of 270 for EPI week #34. This is 74% less than EPI week #33. For the year we have received 27% more requests than average; 9,601 requests to date compared to the 7 year average of 7,534.

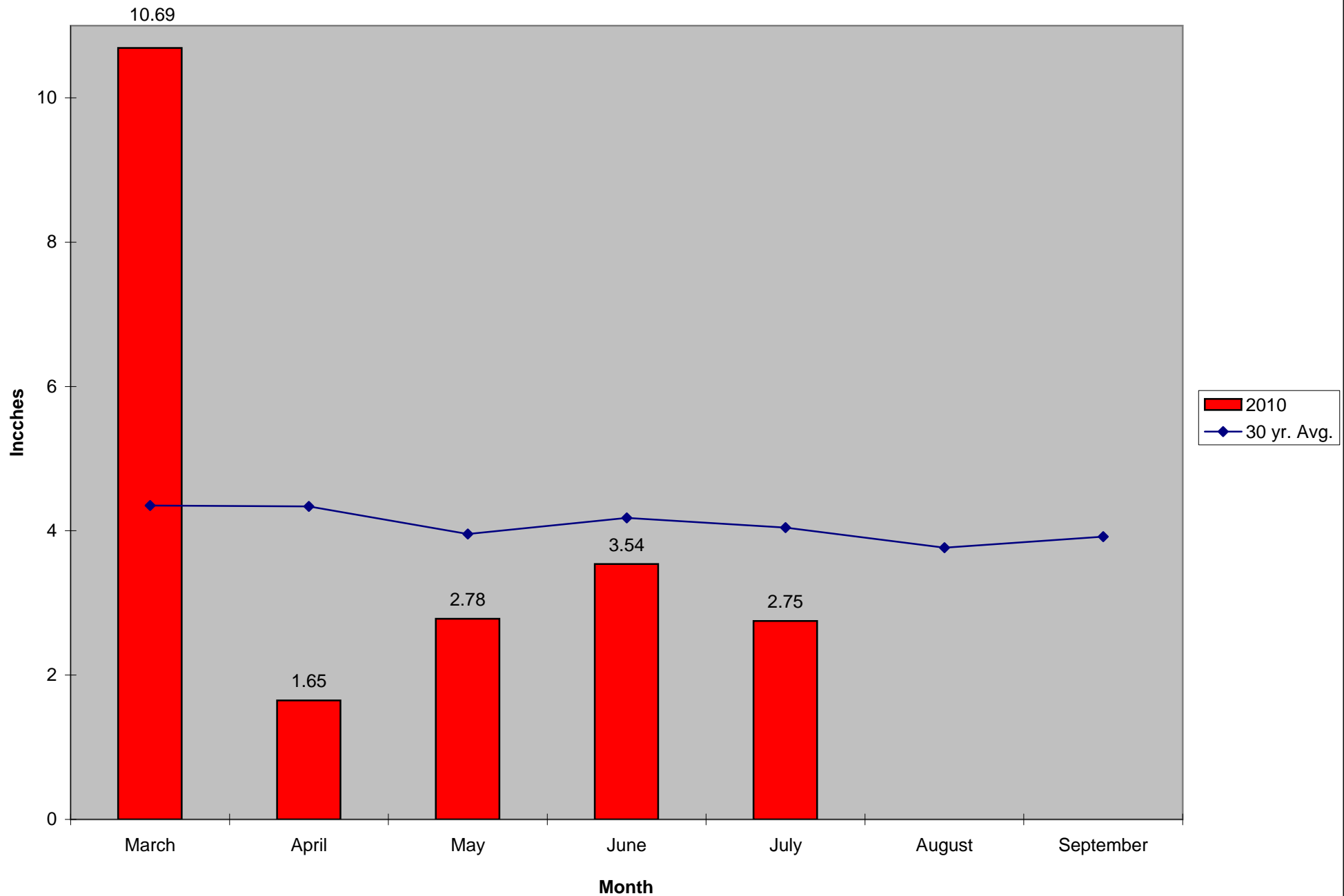
CMMCP Mosquito Summary*-

Target Species	Δ From Last Week	Δ From Last Year	Predominant Trap Site(s)
<i>Aedes vexans</i> *	+550.0%	-70.45%	Clinton, Chelmsford
<i>Coquillettidia perturbans</i>	-16.54%	-33.75%	Clinton, Tewksbury
<i>Culiseta melanura</i> *	+1700%	-70.00%	Billerica, Tewksbury
<i>Ochlerotatus canadensis</i>	+00.00%	-100.0%	N/A
<i>Culex</i> Species	-37.30%	-60.94%	Auburn, Shrewsbury
All Species	-22.00%	-58.02%	Auburn, Clinton

The predominant mosquito for the week was *Culex* Species,
followed by *Coquillettidia perturbans*.

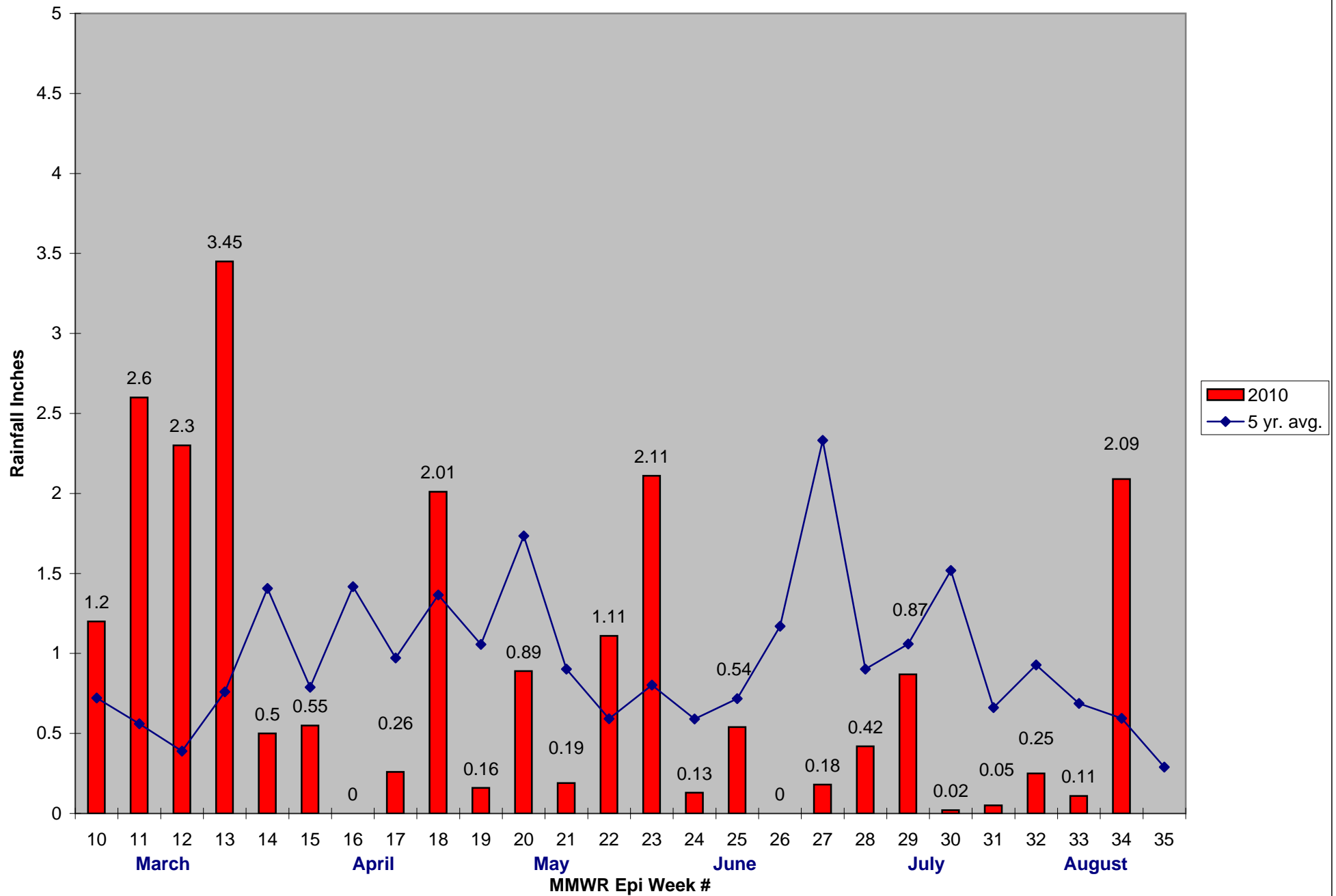
*Based on single digit specimens collected

2010 Mass. Rainfall Data vs. 30 Year Average*



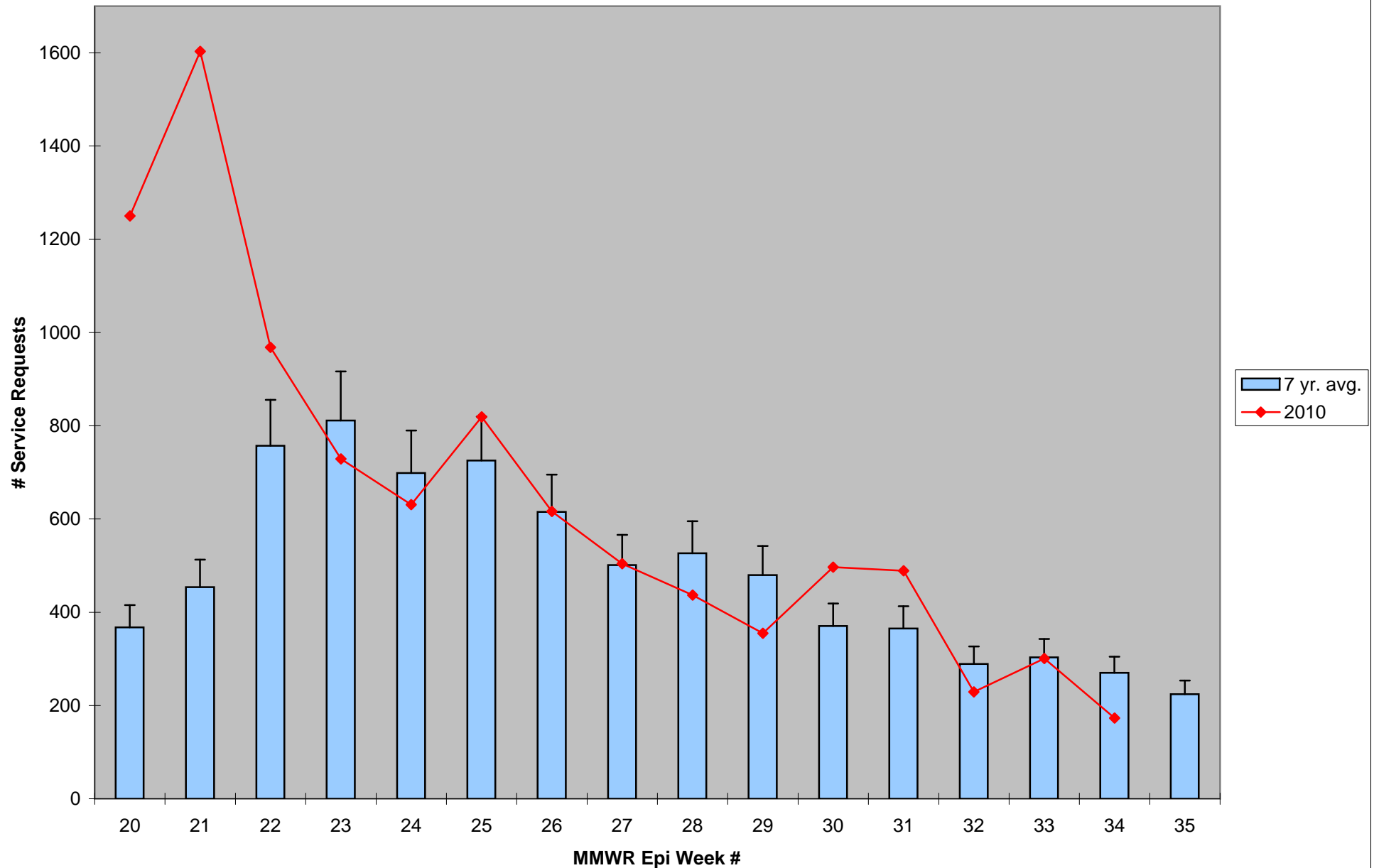
*Source: Northeast Regional Climate Center: http://www.nrcc.cornell.edu/page_summaries.html

2010 CMMCP Weekly Rainfall vs. 5 Year Average*



*Source: CMMCP Weather Station - Northborough, MA

ULV Service Request History Comparison 2003-2010



Error bars show approx. number of requests if we had 38 cities and towns over the 7 year average

2010 Rainfall vs. Requests

