

CMMCP WEEKLY SURVEILLANCE REPORT



EPI week #35
Aug. 29 – Sep. 4, 2010

Frank Cornine, *Field Biologist*
Curtis Best, *Staff Entomologist*
Tim McGlinchy, *Director of Operations*
Tim Deschamps, *Executive Director*

Central Mass. Mosquito Control Project
Weekly Report- 8/29/10-9/4/10
EPI Week #35

Cumulative Surveillance Summary

Target Species	<i>Ae. vex</i>	<i>Cq. per</i>	<i>Cs. mel</i>	<i>Oc. can</i>	<i>Culex</i>	All Species
No. Pools	40	258	174	73	707	2419
Total Specimens	199	8543	671	421	8837	23674
No. Pools WNV +	0	0	0	0	8*	8*
No. Pools EEE +	0	0	0	0	0	0

*Pool of WNV+ *Culex* Species collected in Berlin on 7/29/10

*Pool of WNV+ *Culex* Species collected in Auburn on 8/4/10

*Pool of WNV+ *Culex* Species collected in Auburn on 8/4/10

*Pool of WNV+ *Culex* Species collected in Auburn on 8/4/10

*Pool of WNV+ *Culex* Species collected in Chelmsford on 8/11/10

*Pool of WNV+ *Culex* Species collected in Auburn on 8/13/10

Pool of EEE+ *Coquillettidia perturbans* collected in Bolton on 8/20/10 (DPH collection)

Pool of WNV+ *Culex* Species collected in Worcester on 8/20/10 (DPH collection)

Pool of WNV+ *Culex* Species collected in Worcester on 8/20/10 (DPH collection)

*Pool of WNV+ *Culex* Species collected in Natick on 8/25/10

*Pool of WNV+ *Culex* Species collected in Auburn on 8/26/10

Horse in Warren tested positive for EEE, onset date of 7/31/10

Horse in Lancaster tested positive for EEE, onset date of 8/12/10

Weather Summary (Northborough, MA): The weather for this particular week averaged 77.66°F with a recorded high temperature of 95.8°F and a recorded low temperature of only 57.5°F. For this week there was a total of 0.38 inches of rain observed. Compared to the previous week, it was approximately 12.79°F warmer on average, and rained 1.71 inches less. There has been 0.38 inches of rain accumulated in September. August finished with 2.50 inches of rain in the CMMCP area (4.25 statewide), while July and June finished with 1.48 inches and 3.89 inches respectively. Requests for spraying totaled 176 this week, 27% less than the 7 year average of 224 for EPI week #35. This is even with EPI week #34. For the year we have received 26% more requests than average; 9,777 requests to date compared to the 7 year average of 7,758.

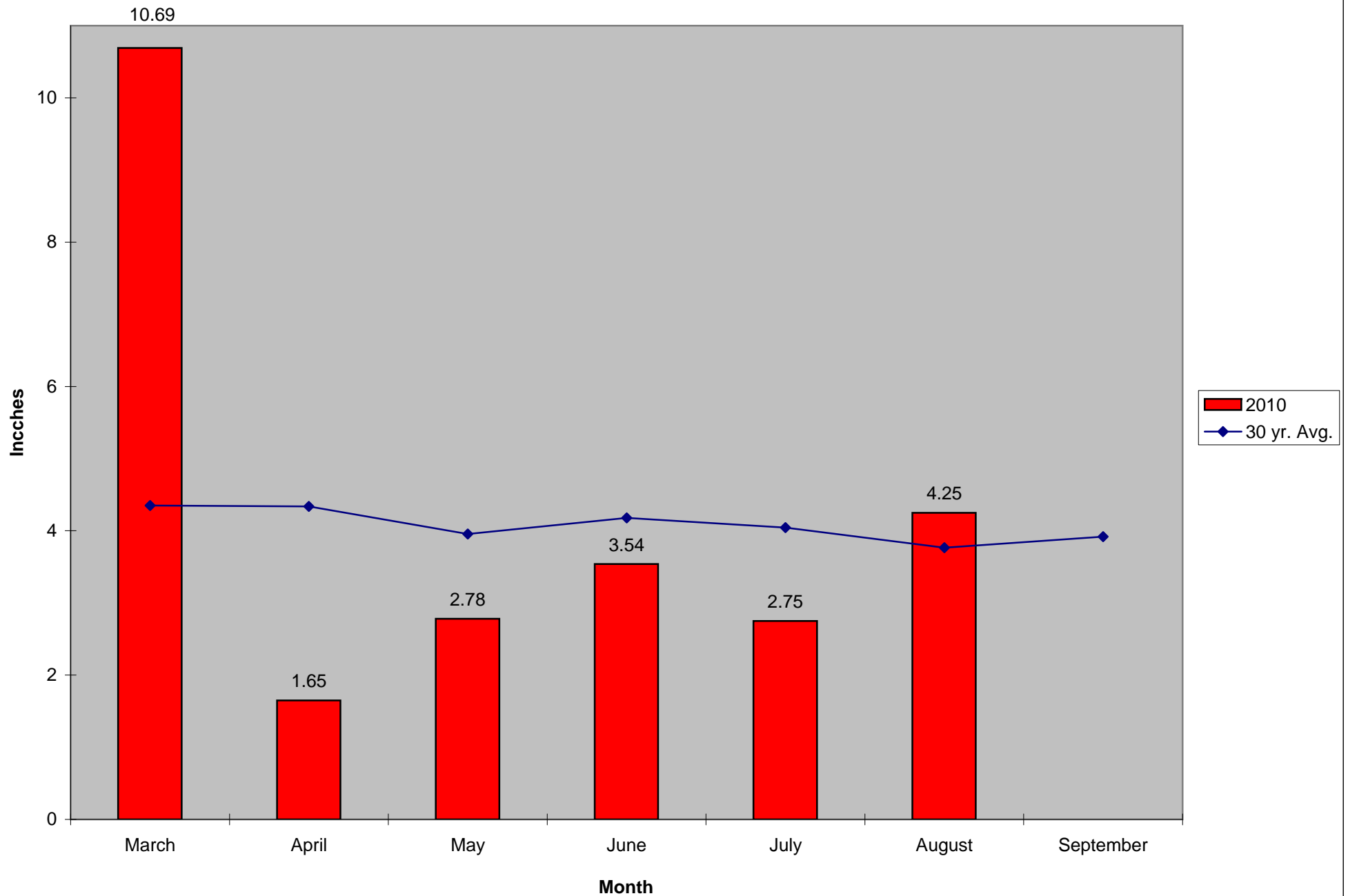
CMMCP Mosquito Summary*-

Target Species	Δ From Last Week	Δ From Last Year	Predominant Trap Site(s)
<i>Aedes vexans</i> *	-30.77%	-18.18%	Natick, Northborough
<i>Coquillettidia perturbans</i> *	+17.92%	+861.5%	Northborough, Shrewsbury
<i>Culiseta melanura</i> *	-72.22%	-88.89%	Stow
<i>Ochlerotatus canadensis</i>	+00.00%	-100.0%	N/A
<i>Culex</i> Species	-8.000%	-55.66%	Leominster, Westford
All Species	+2.230%	-41.26%	Hopkinton, Shrewsbury

The predominant mosquito for the week was *Culex* Species,
followed by *Coquillettidia perturbans*.

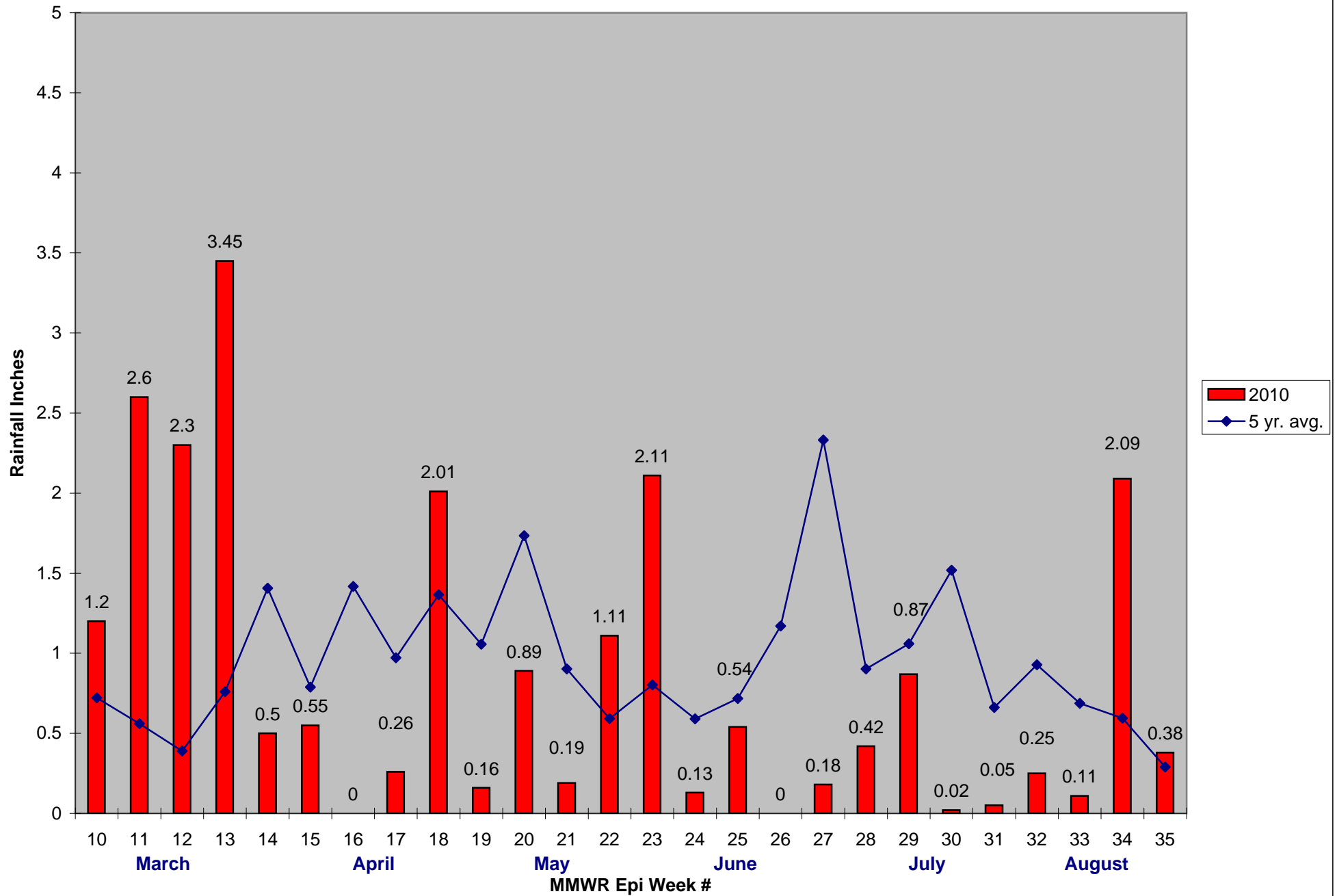
*Based on single digit specimens

2010 Mass. Rainfall Data vs. 30 Year Average*



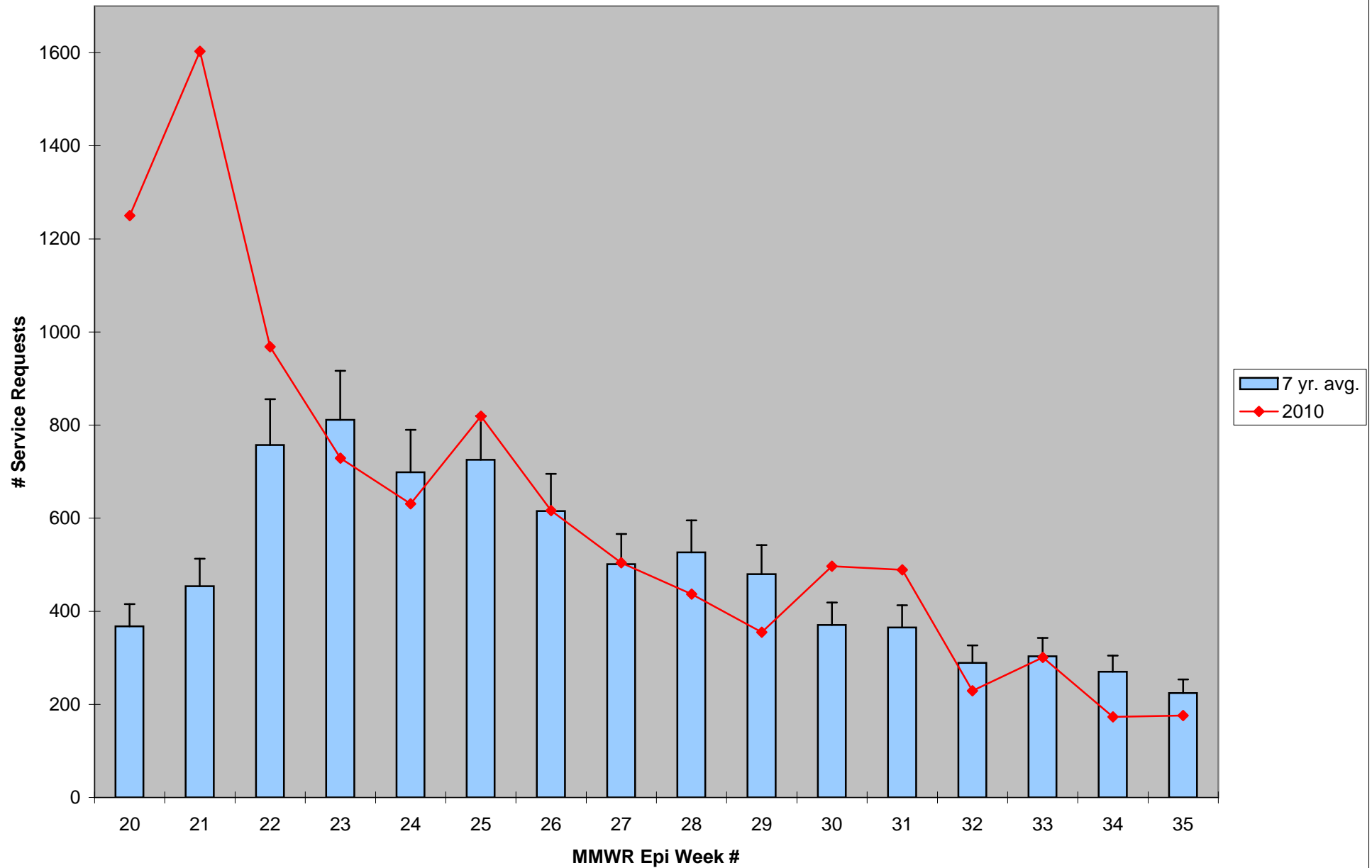
*Source: Northeast Regional Climate Center: http://www.nrcc.cornell.edu/page_summaries.html

2010 CMMCP Weekly Rainfall vs. 5 Year Average*



*Source: CMMCP Weather Station - Northborough, MA

ULV Service Request History Comparison 2003-2010



Error bars show approx. number of requests if we had 38 cities and towns over the 7 year average

2010 Rainfall vs. Requests

