

# CMMCP WEEKLY SURVEILLANCE REPORT



**EPI week #22**  
**May 27 – Jun. 2, 2012**

**Frank Cornine**, *Field Biologist*  
**Curtis Best**, *Staff Entomologist*  
**Juliana Miller**, *Entomologist*  
**Tim McGlinchy**, *Director of Operations*  
**Tim Deschamps**, *Executive Director*

**Central Mass. Mosquito Control Project**  
**Weekly Report- 5/27/12-6/2/12**  
**EPI Week #22**

**Cumulative Surveillance Summary**

Target Species	<i>Ae. vex</i>	<i>Cq. per</i>	<i>Cs. mel</i>	<i>Oc. can</i>	<i>Culex</i>	All Species
<b>No. Pools</b>	5	7	31	10	43	155
<b>Total Specimens</b>	7	12	536	28	169	898
<b>No. Pools WNV +</b>	0	0	0	0	0	0
<b>No. Pools EEE +</b>	0	0	0	0	0	0

**Weather Summary (Northborough, MA):** The weather for this particular week averaged 67.9°F with a recorded high temperature of 85.0°F and a recorded low temperature of only 52.0°F. For this week there was also a total of 1.31 inches of rain observed. Compared to the previous week, it was approximately 1.41°F warmer on average, and rained about .60 inches more. There has been 0.83 inches of rain accumulated in June, while the total rainfall for the month of May was 4.01 inches. For the year we have received 31% more requests than average; 2,173 requests to date compared to the 9 year average of 1,657. Requests were 96% less than the 2011 totals, 2,037 in 2011 against 1,036 in 2012. Service requests **decreased 9%** from EPI week 21 to Epi week 22 for 2012 (1,137 vs. 1,036).

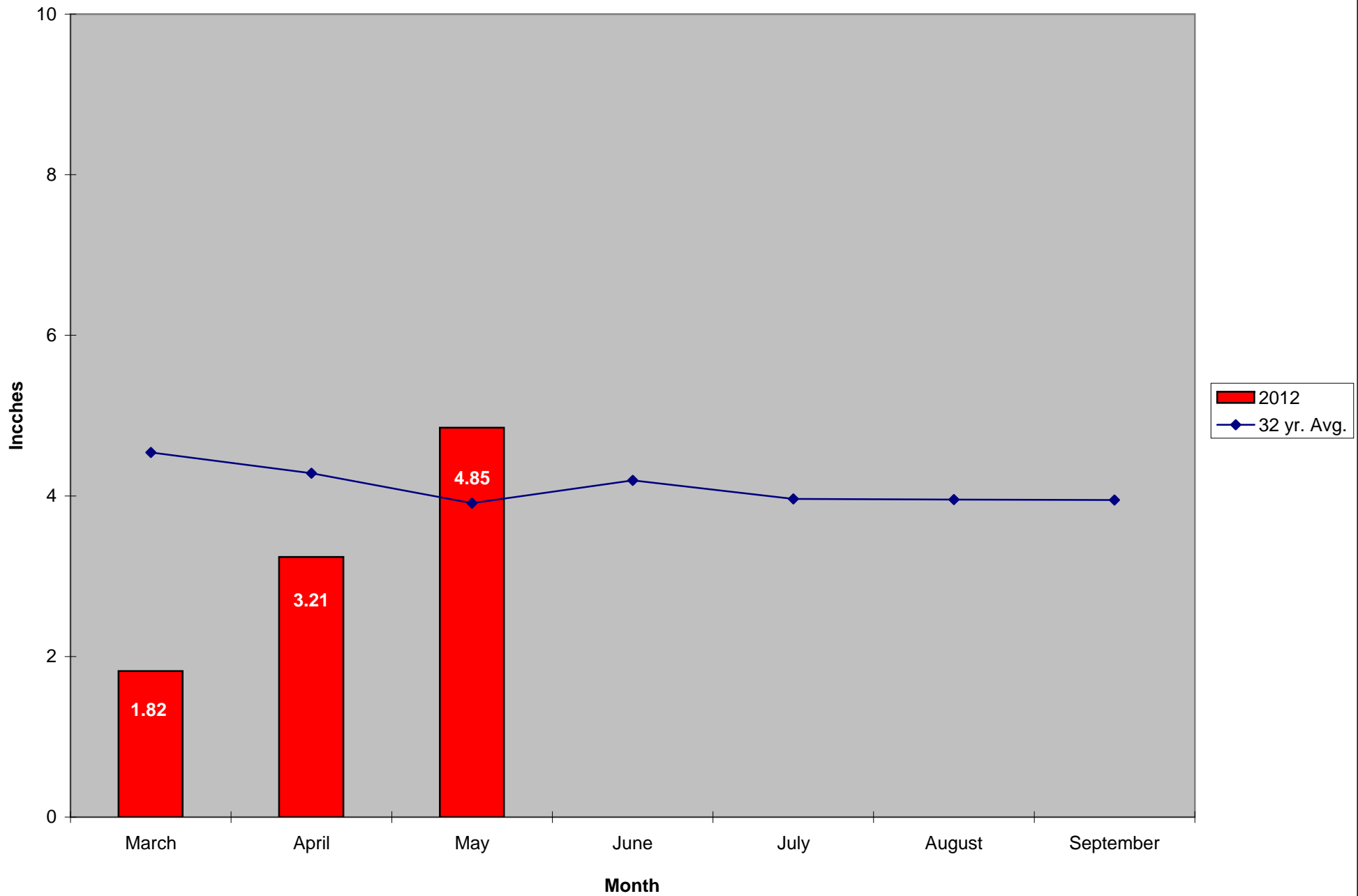
**CMMCP Mosquito Summary\*-**

Target Species	Δ From Last Week	Δ From Last Year	Predominant Trap Site(s)
<i>Aedes vexans</i>	+50.00%	+50.00%	Northbridge, Blackstone
<i>Coquillettidia perturbans</i>	+800.0%	+800.0%	Clinton, Lancaster
<i>Culiseta melanura</i>	-10.48%	+683.3%	Hopkinton, Westford
<i>Ochlerotatus canadensis</i>	+2200%	+187.5%	Westford
<i>Culex</i> Species	+231.4%	-47.51%	Hopkinton
All Species	+59.80%	+8.530%	Hopkinton, Westford

The predominant mosquito for the week was *Culex* Species followed by *Culiseta melanura*.

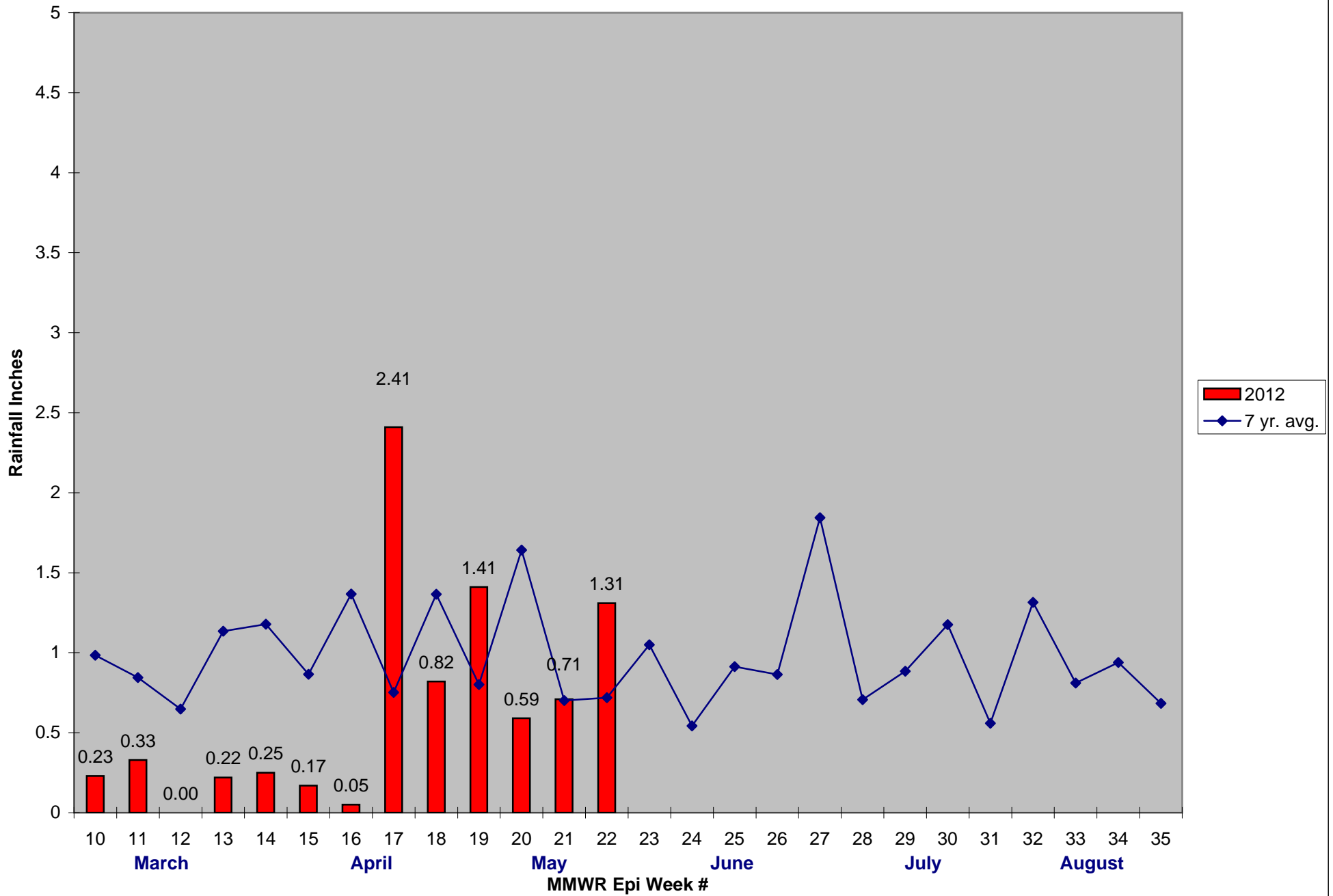
\*Low early season numbers may contribute to these comparisons being not as significant as they appear

### 2012 Mass. Rainfall Data vs. 32 Year Average\*



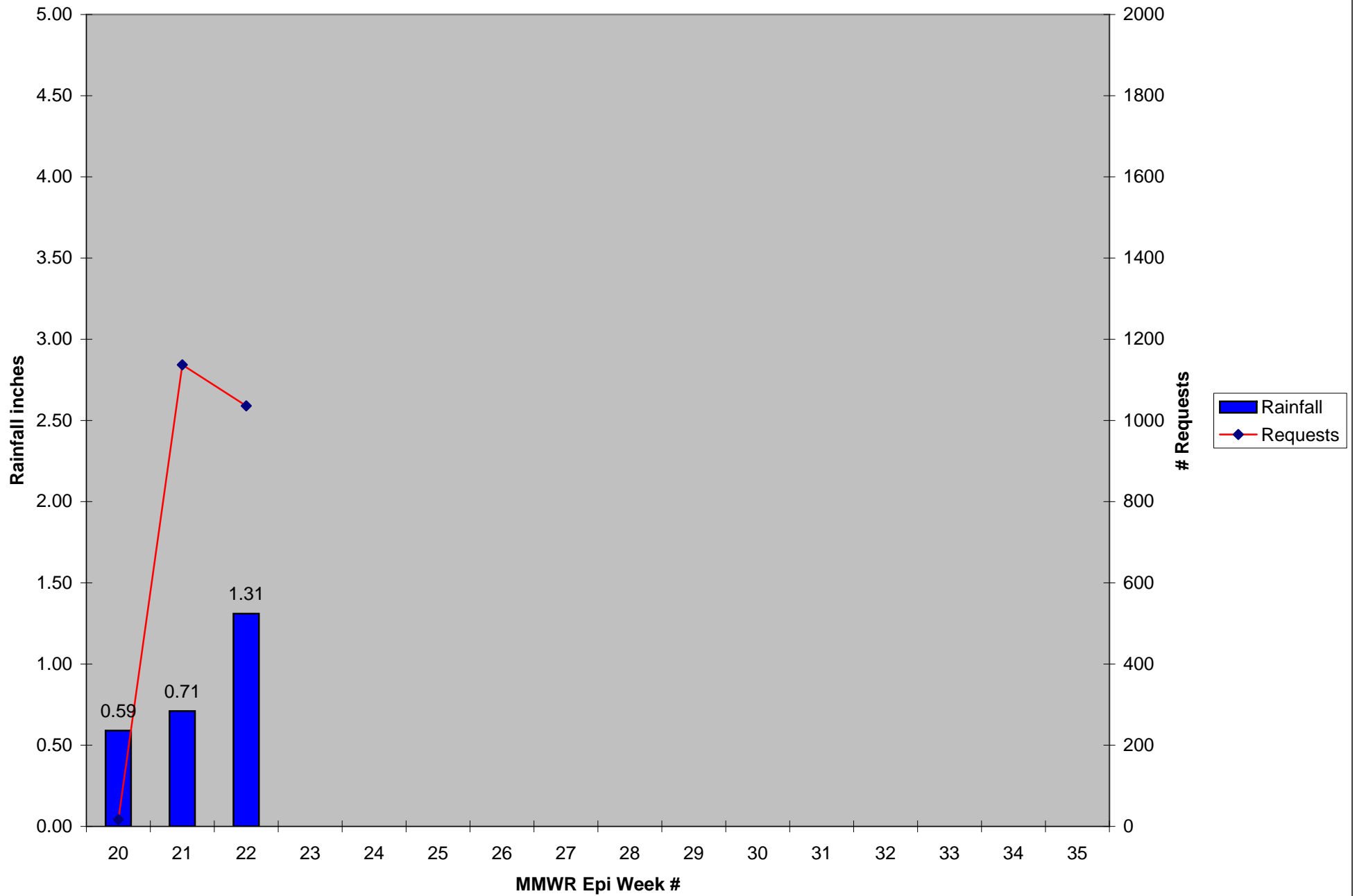
\*Source: Northeast Regional Climate Center: [http://www.nrcc.cornell.edu/page\\_summaries.html](http://www.nrcc.cornell.edu/page_summaries.html)

2012 CMMCP Weekly Rainfall vs. 7 Year Average\*

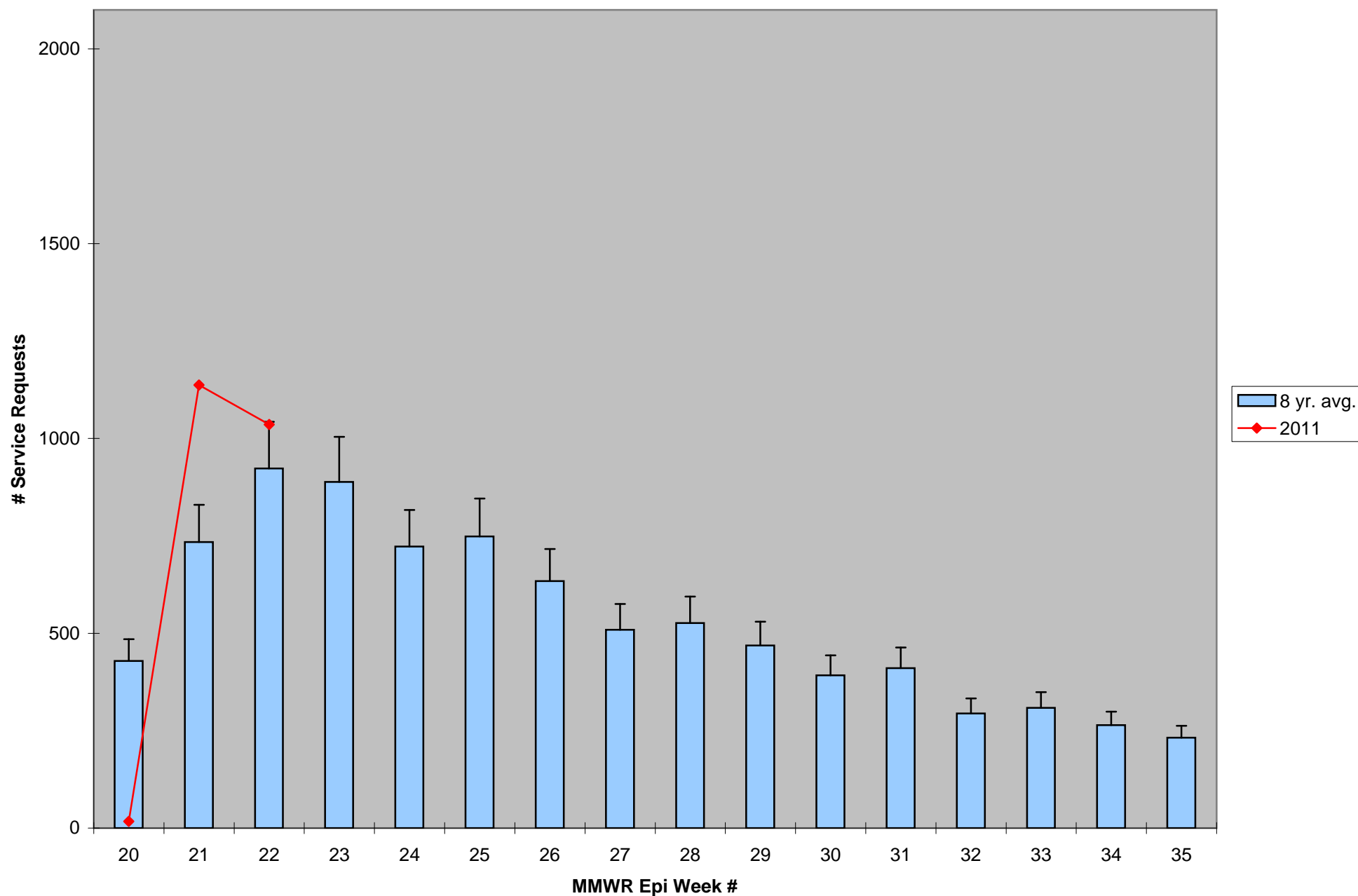


\*Source: CMMCP Weather Station - Northborough, MA

2012 Rainfall vs. Requests



## ULV Service Request History Comparison 2003-2012



error bars show the approx. number of requests if we had 40 cities and towns over the 9 year average