

CMMCP WEEKLY SURVEILLANCE REPORT



EPI week #23
Jun. 3 – 9, 2012

Frank Cornine, *Field Biologist*
Curtis Best, *Staff Entomologist*
Juliana Miller, *Entomologist*
Tim McGlinchy, *Director of Operations*
Tim Deschamps, *Executive Director*

Central Mass. Mosquito Control Project
Weekly Report- 6/3/12-6/9/12
EPI Week #23

Cumulative Surveillance Summary

Target Species	<i>Ae. vex</i>	<i>Cq. per</i>	<i>Cs. mel</i>	<i>Oc. can</i>	<i>Culex</i>	All Species
No. Pools	9	13	50	18	71	243
Total Specimens	18	38	829	87	259	1468
No. Pools WNV +	0	0	0	0	0	0
No. Pools EEE +	0	0	0	0	0	0

Weather Summary (Northborough, MA): The weather for this particular week averaged 58.76°F with a recorded high temperature of 80.3°F and a recorded low temperature of 56.6°F. For this week there was a total of 0.66 inches of rain observed. Compared to the previous week, it was approximately 9.15°F cooler on average, and rained about .65 inches less. There has been 1.49 inches of rain accumulated in June, while the total rainfall for the month of May was 4.01 inches at the CMMCP weather station (4.85" statewide). For the year we have received 11% more requests than average; 2,804 requests to date compared to the 9 year average of 2,546. Requests were 94% less than the 2011 totals for the same time frame, 5,455 in 2011 against 2,804 in 2012. Service requests decreased 64% from EPI week 22 to Epi week 23 for 2012 (1,036 vs. 631) likely due to low temperatures and frequent rain events minimizing residents exposure to the existing mosquito population.

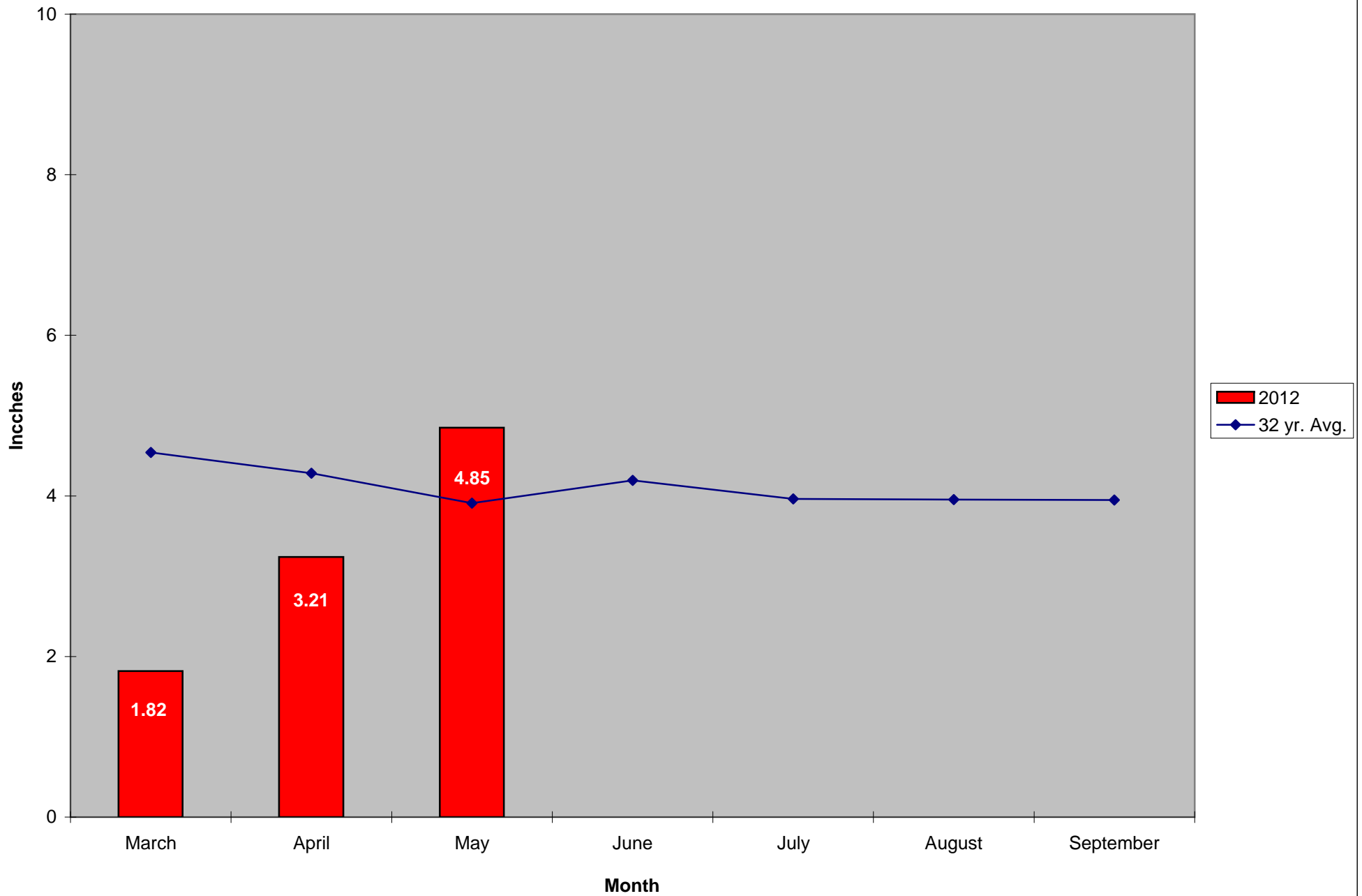
CMMCP Mosquito Summary*-

Target Species	Δ From Last Week	Δ From Last Year	Predominant Trap Site(s)
<i>Aedes vexans</i>	+266.7%	+175.0%	Hopedale
<i>Coquillettidia perturbans</i>	+177.8%	-24.24%	Westborough
<i>Culiseta melanura</i>	+209.6%	+561.4%	Hopkinton, Westborough
<i>Ochlerotatus canadensis</i>	+152.2%	-43.14%	Southborough, Hopkinton
<i>Culex</i> Species	-50.00%	-92.67%	Hopedale
All Species	+61.01%	-54.33%	Hopkinton, Westborough, Holliston

The predominant mosquito for the week was *Culiseta melanura*.

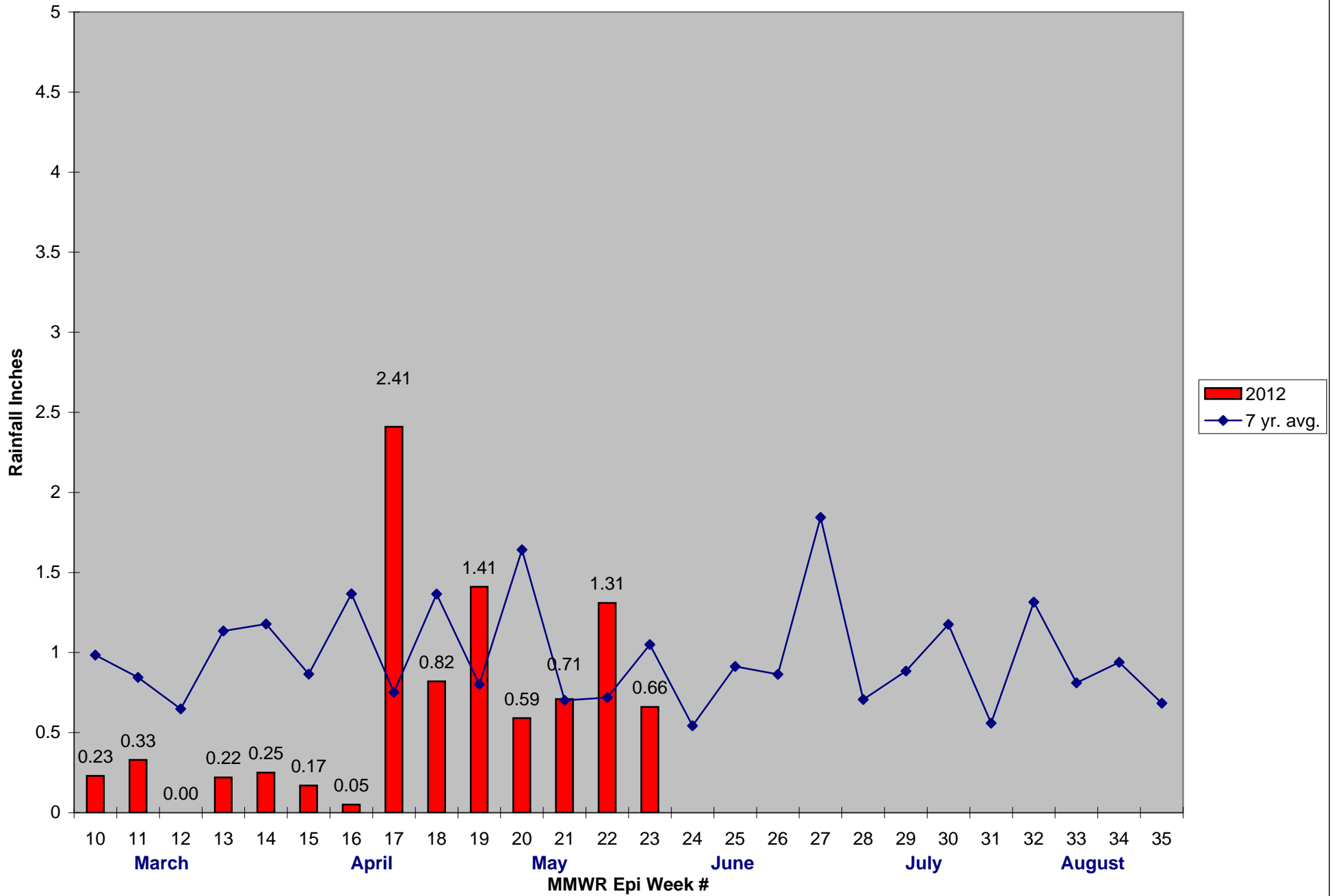
*Low early season numbers may contribute to these comparisons being not as significant as they appear

2012 Mass. Rainfall Data vs. 32 Year Average*



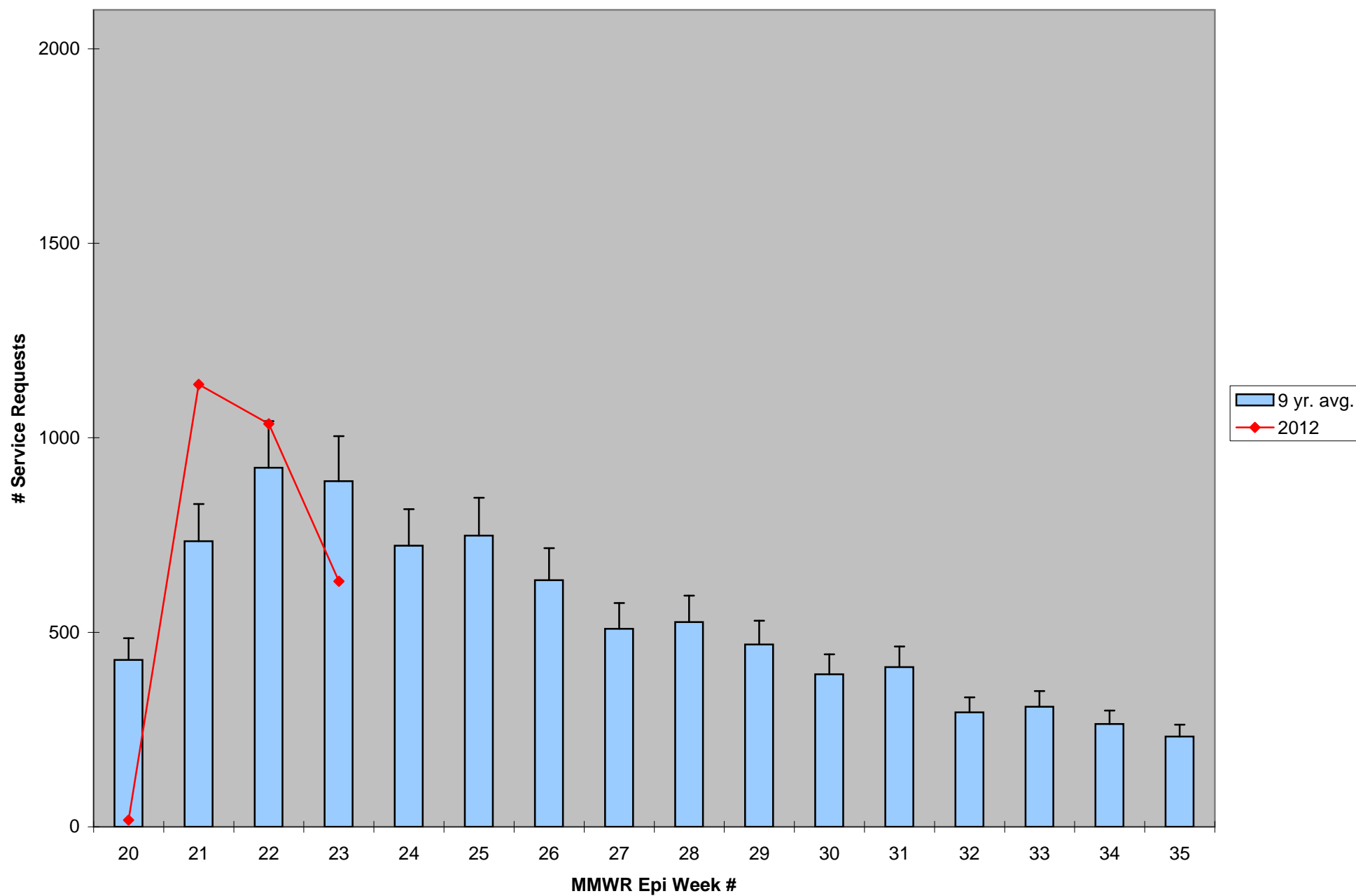
*Source: Northeast Regional Climate Center: http://www.nrcc.cornell.edu/page_summaries.html

2012 CMMCP Weekly Rainfall vs. 7 Year Average*



*Source: CMMCP Weather Station - Northborough, MA

ULV Service Request History Comparison 2003-2012



2012 Rainfall vs. Requests

