

# CMMCP WEEKLY SURVEILLANCE REPORT



**EPI week #24**  
**Jun. 10 – 16, 2012**

**Frank Cornine**, *Field Biologist*  
**Curtis Best**, *Staff Entomologist*  
**Juliana Miller**, *Entomologist*  
**Tim McGlinchy**, *Director of Operations*  
**Tim Deschamps**, *Executive Director*

**Central Mass. Mosquito Control Project**  
**Weekly Report- 6/10/12-6/16/12**  
**EPI Week #24**

**Cumulative Surveillance Summary**

<b>Target Species</b>	<b><i>Ae. vex</i></b>	<b><i>Cq. per</i></b>	<b><i>Cs. mel</i></b>	<b><i>Oc. can</i></b>	<b><i>Culex</i></b>	<b>All Species</b>
<b>No. Pools</b>	10	39	69	30	119	400
<b>Total Specimens</b>	19	771	967	116	805	3095
<b>No. Pools WNV +</b>	0	0	0	0	0	0
<b>No. Pools EEE +</b>	0	0	0	0	0	0

**Weather Summary (Northborough, MA):** The weather for this particular week averaged 65.0°F with a recorded high temperature of 84.3°F and a recorded low temperature of only 48.9°F. For this week there was also a total of 0.02 inches of rain observed. Compared to the previous week, it was approximately 6.24°F warmer on average, and rained about .64 inches less. There has been 1.51 inches of rain accumulated in June, while the total rainfall for the month of May was 4.01 inches at the CMMCP weather station (4.85" statewide). For the year we have received 11% more requests than average; 3,641 requests to date compared to the 9 year average of 3,269. Requests were 77% less than the 2011 totals for the same time frame, 6,436 in 2011 against 3,641 in 2012. Service requests increased 33% from EPI week 23 to Epi week 24 for 2012 (631 vs. 837) likely due to increasing temperatures and no rain events to minimize residents exposure to the existing mosquito population.

**CMMCP Mosquito Summary\*-**

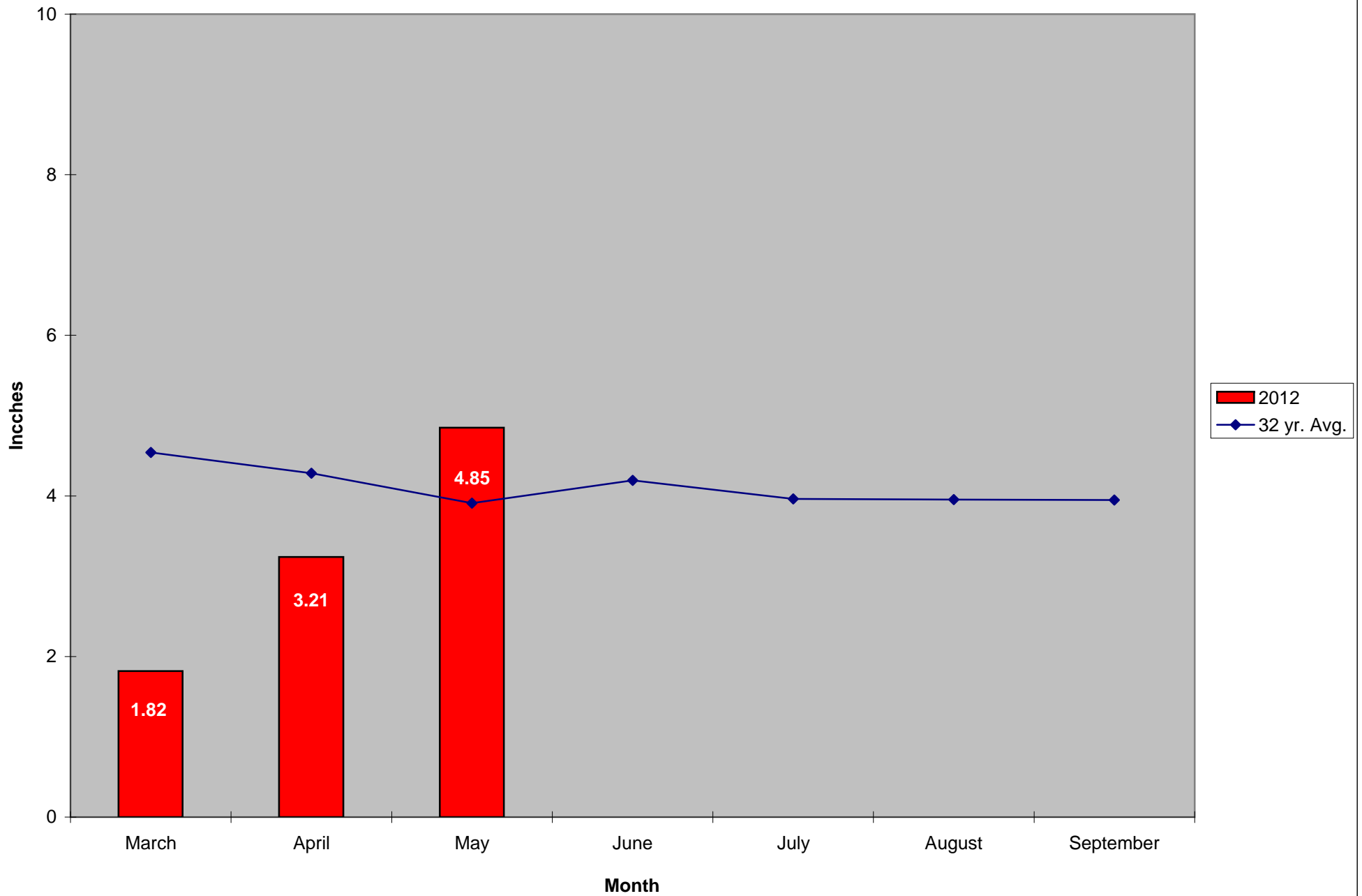
**Target Species                      Δ From                      Δ From                      Predominant Trap Site(s)**  
**Last Week                      Last Year**

<i>Aedes vexans</i>	-90.91%	-50.00%	Ayer
<i>Coquillettidia perturbans</i>	+2816%	+428.3%	Ayer, Leominster, Lancaster
<i>Culiseta melanura</i>	-53.26%	+3.820%	Billerica, Westford, Millville
<i>Ochlerotatus canadensis</i>	-65.52%	-77.78%	Marlborough
<i>Culex</i> Species	+503.5%	+42.86%	Uxbridge, Shrewsbury
All Species	+162.89%	+83.38%	Uxbridge, Ayer, Billerica

The predominant mosquito for the week was *Coquillettidia perturbans*.

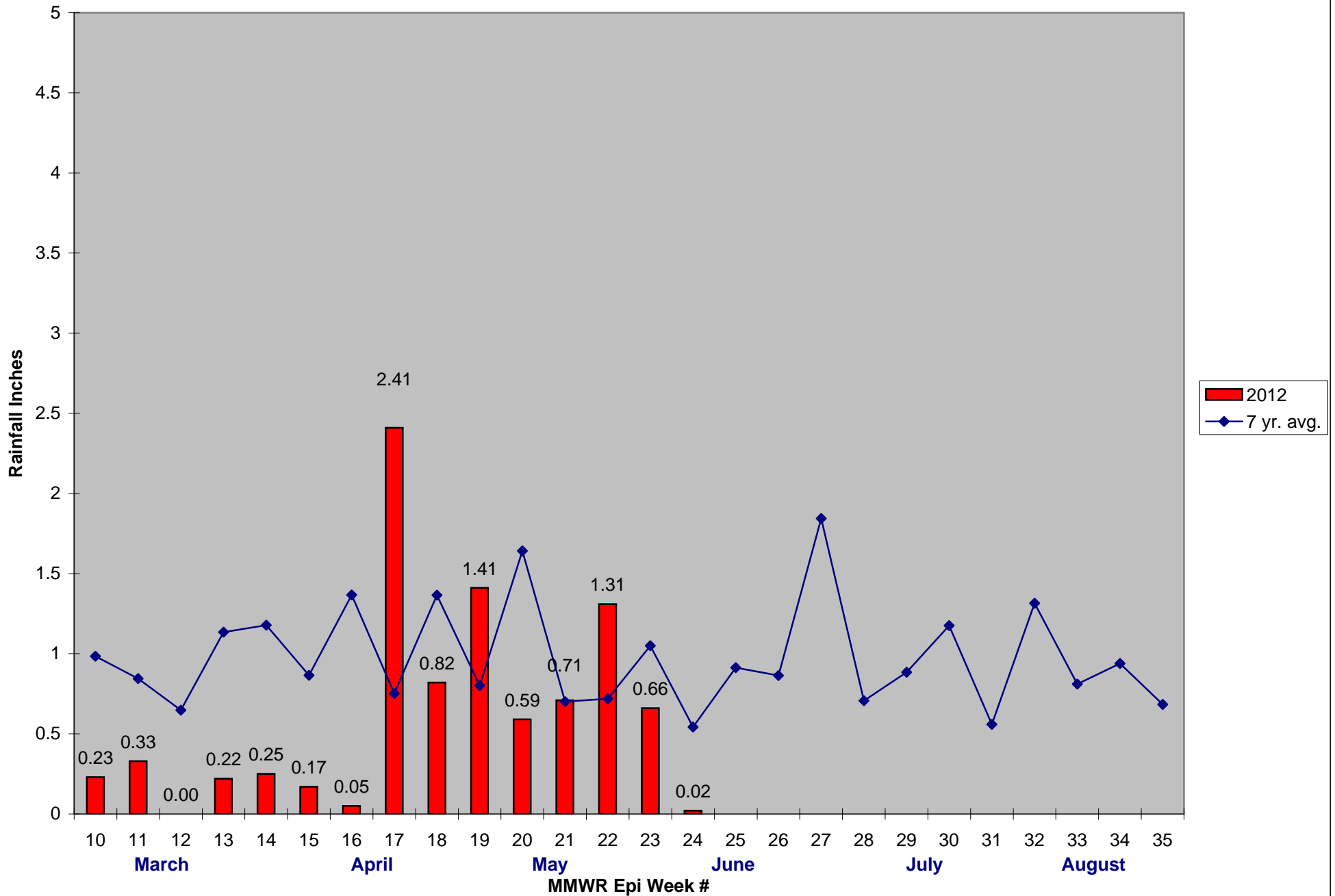
\*Low early season numbers may contribute to these comparisons being not as significant as they appear

### 2012 Mass. Rainfall Data vs. 32 Year Average\*



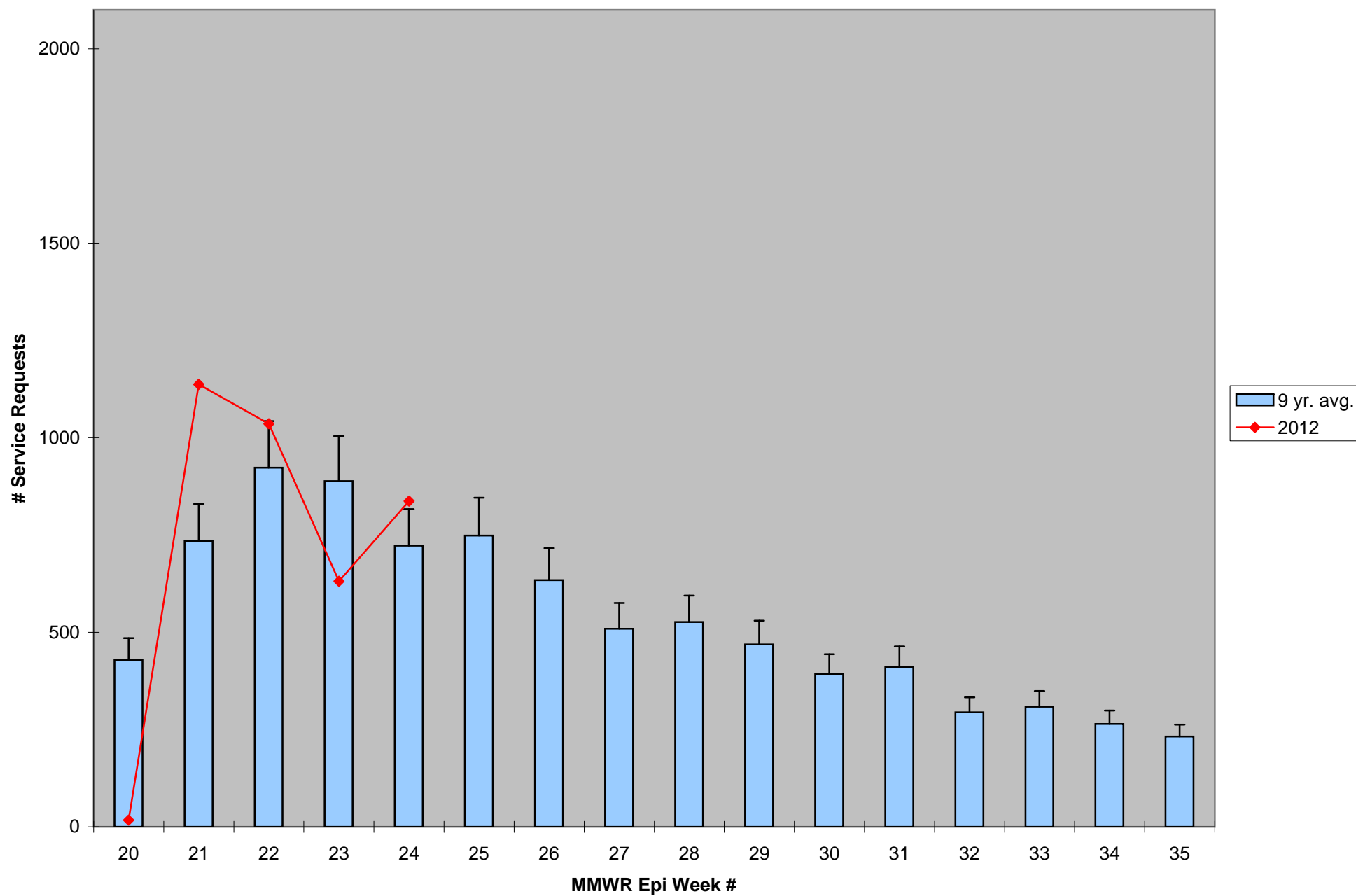
\*Source: Northeast Regional Climate Center: [http://www.nrcc.cornell.edu/page\\_summaries.html](http://www.nrcc.cornell.edu/page_summaries.html)

2012 CMMCP Weekly Rainfall vs. 7 Year Average\*



\*Source: CMMCP Weather Station - Northborough, MA

ULV Service Request History Comparison 2003-2012



2012 Rainfall vs. Requests

