

CMMCP WEEKLY SURVEILLANCE REPORT



EPI week #25
Jun. 17 – 23, 2012

Frank Cornine, *Field Biologist*
Curtis Best, *Staff Entomologist*
Juliana Miller, *Entomologist*
Tim McGlinchy, *Director of Operations*
Tim Deschamps, *Executive Director*

Central Mass. Mosquito Control Project
Weekly Report- 6/17/12-6/23/12
EPI Week #25

Cumulative Surveillance Summary

Target Species	<i>Ae. vex</i>	<i>Cq. per</i>	<i>Cs. mel</i>	<i>Oc. can</i>	<i>Culex</i>	All Species
No. Pools	13	61	83	40	180	564
Total Specimens	24	1268	1058	175	2507	5650
No. Pools WNV +	0	0	0	0	0	0
No. Pools EEE +	0	0	0	0	0	0

Weather Summary (Northborough, MA): The weather for this particular week averaged 72.16°F with a recorded high temperature of 95.8°F and a recorded low temperature of only 49.9°F. For this week there was also a total of 0.75 inches of rain observed. Compared to the previous week, it was approximately 7.16°F warmer on average, and rained about .73 inches more. There has been 2.26 inches of rain accumulated in June, while the total rainfall for the month of May was 4.01 inches at the CMMCP weather station (4.85" statewide). For the year we have received 10% more requests than average; 4,424 requests to date compared to the 9 year average of 4,017. Requests were 64% less than the 2011 totals for the same time frame, 7,275 in 2011 against 4,424 in 2012. Service requests decreased 7% from EPI week 24 to Epi week 25 for 2012 (837 vs. 783) likely due to rain events to minimizing residents exposure to the existing mosquito population.

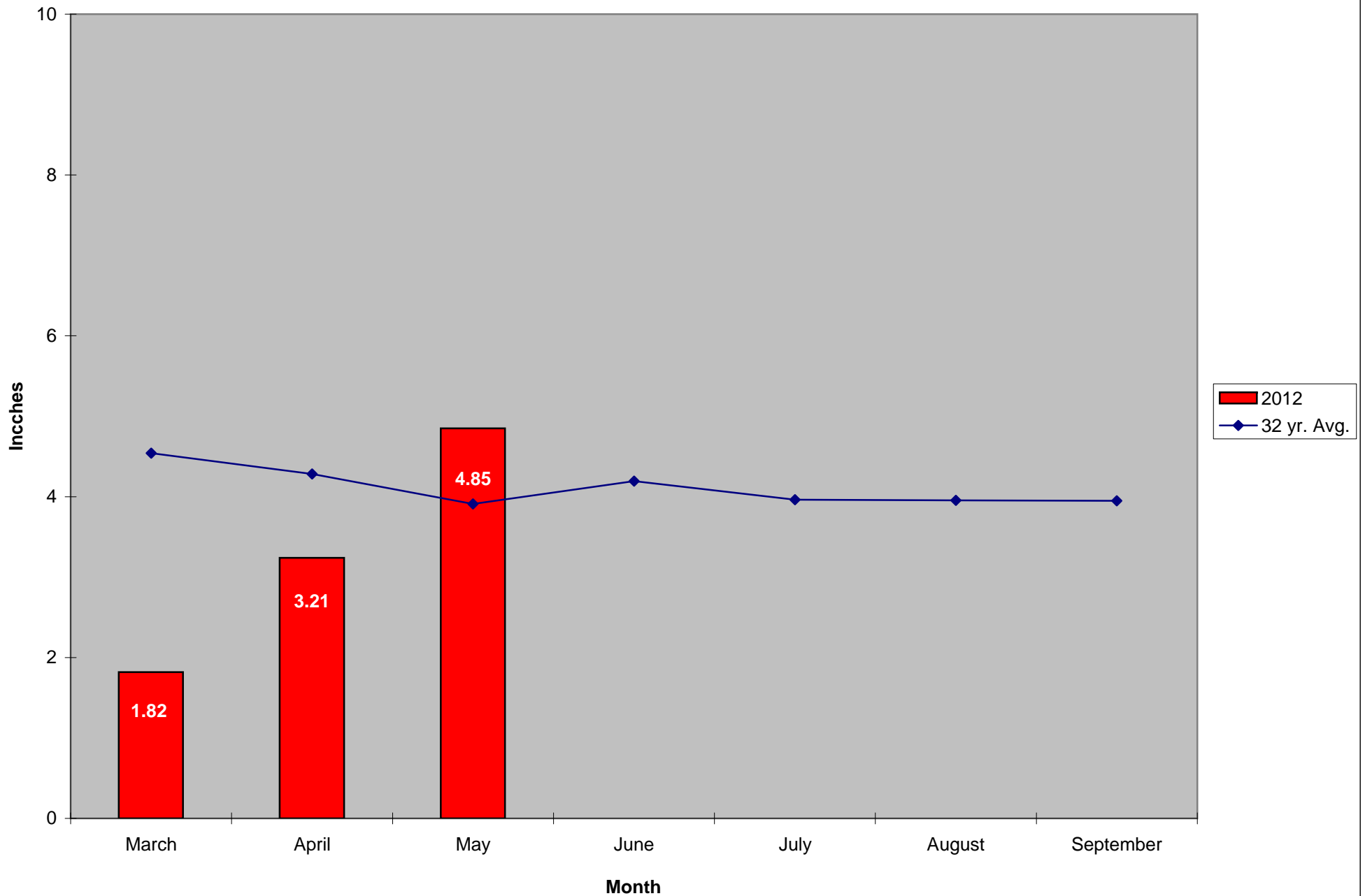
CMMCP Mosquito Summary-

Target Species Δ From Δ From Predominant Trap Site(s)
Last Week Last Year

<i>Aedes vexans</i>	+100.0%	+200.0%	Devens, Acton, Hudson
<i>Coquillettidia perturbans</i>	-33.33%	+315.4%	Hopkinton, Westborough
<i>Culiseta melanura</i>	-33.09%	+435.3%	Westborough, Holliston
<i>Ochlerotatus canadensis</i>	+195.0%	+180.9%	Marlborough
<i>Culex</i> Species	+168.3%	-35.20%	Shrewsbury, Acton
All Species	+27.86%	+0.290%	Shrewsbury, Hopkinton

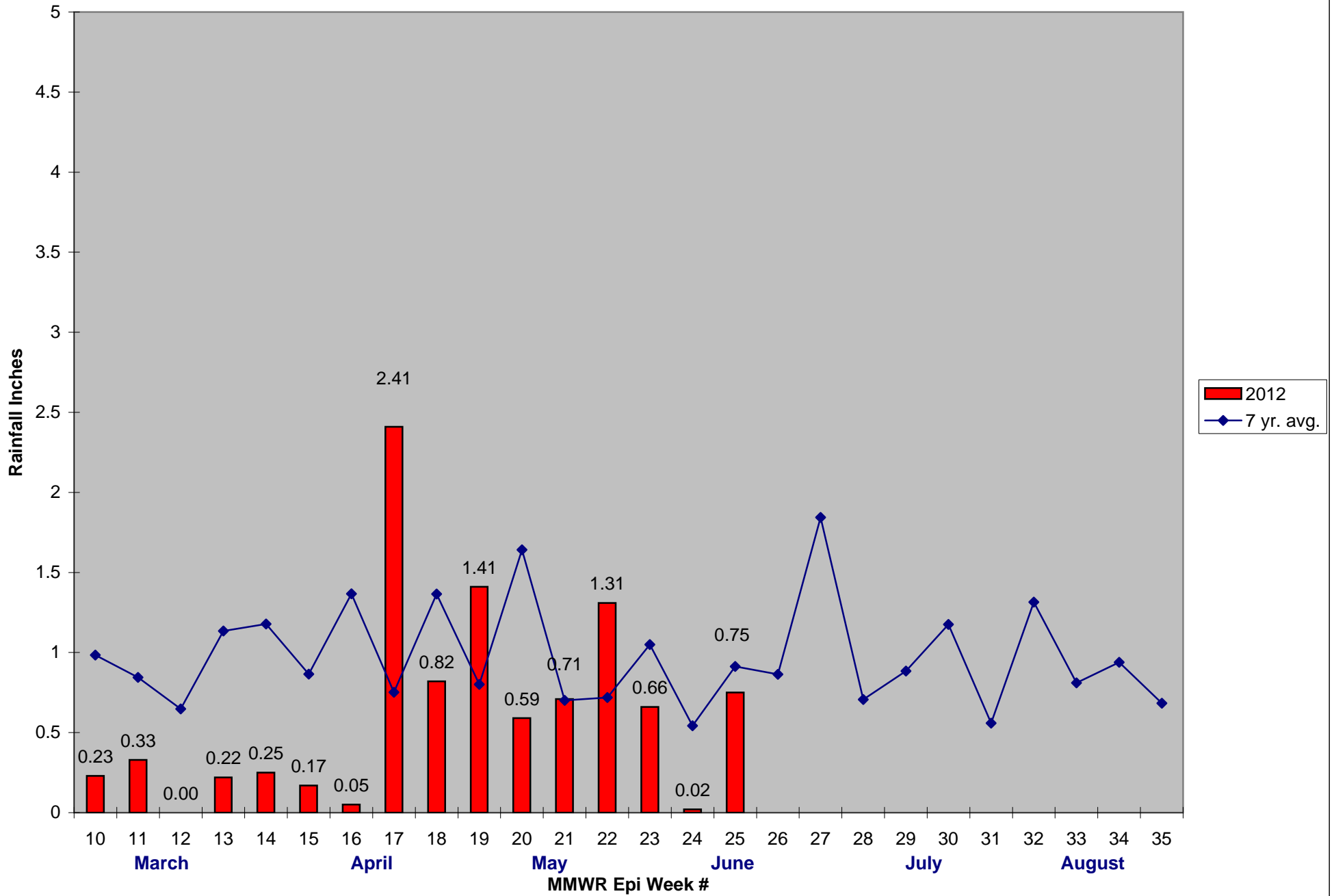
The predominant mosquito for the week was *Culex* Species,
followed by *Coquillettidia perturbans*.

2012 Mass. Rainfall Data vs. 32 Year Average*



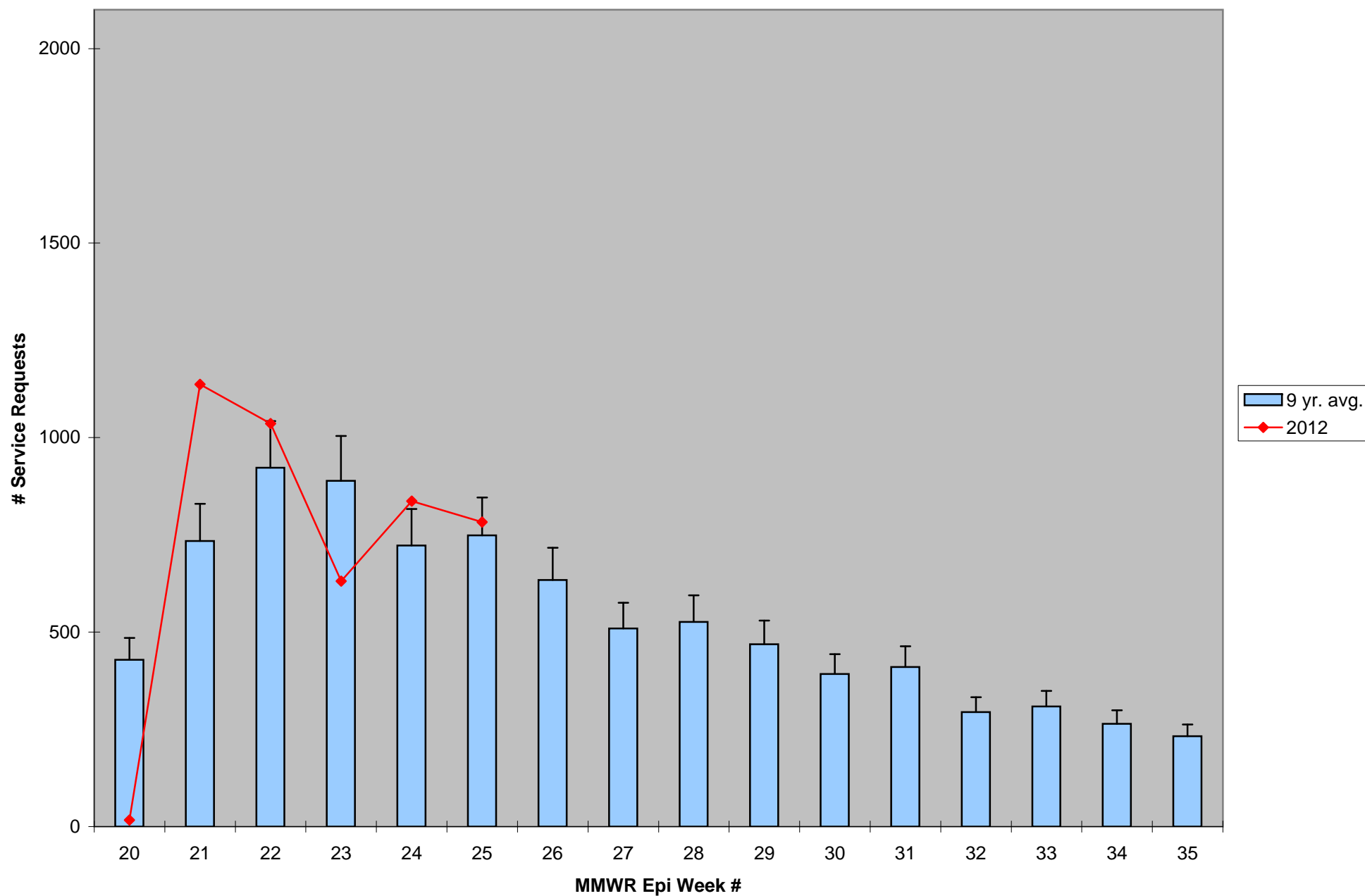
*Source: Northeast Regional Climate Center: http://www.nrcc.cornell.edu/page_summaries.html

2012 CMMCP Weekly Rainfall vs. 7 Year Average*



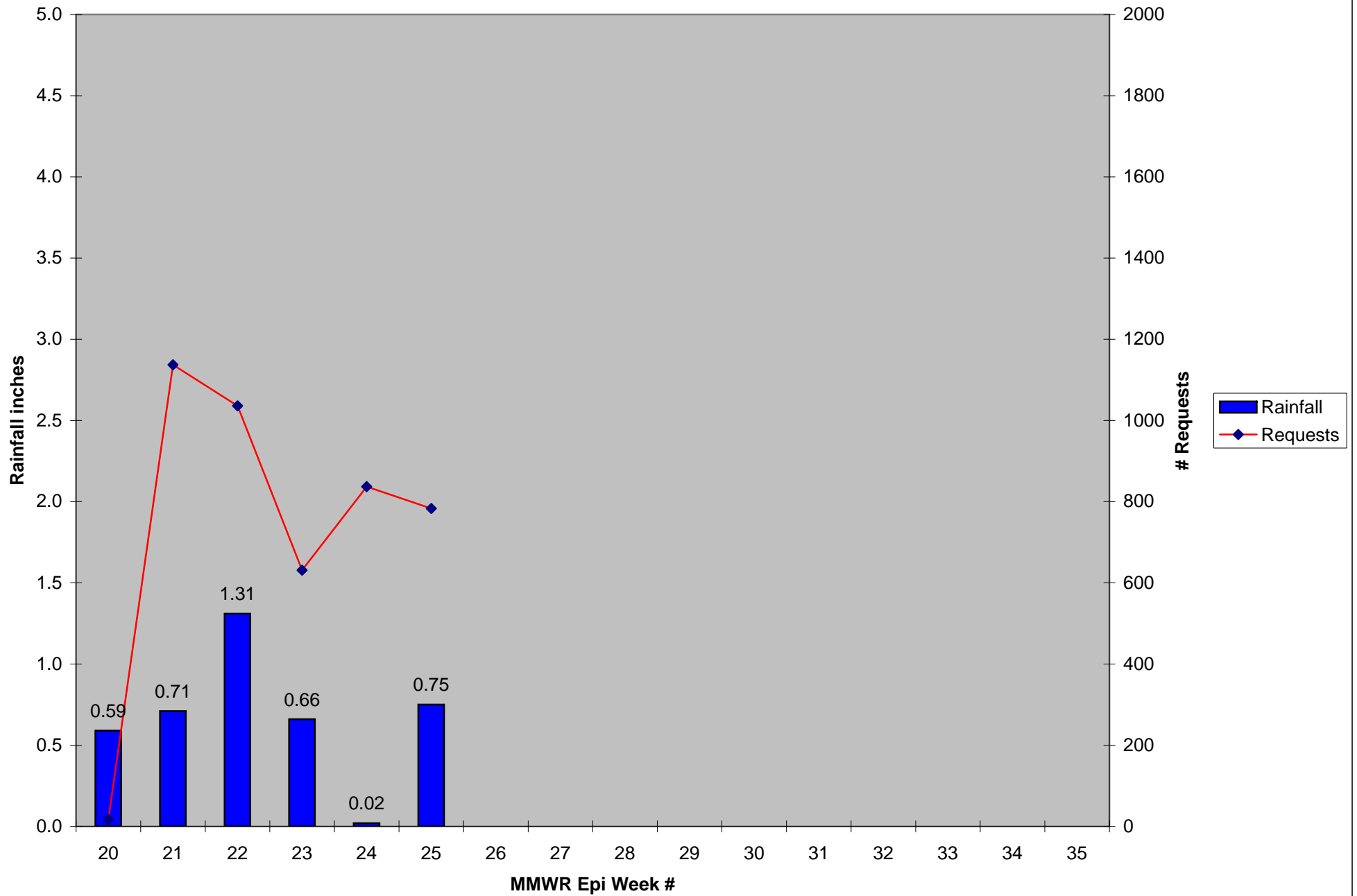
*Source: CMMCP Weather Station - Northborough, MA

ULV Service Request History Comparison 2003-2012



Error bars show approx. number of requests if we had 40 cities and towns over the 9 year average

2012 Rainfall vs. Requests



2012 Temp vs. Requests

