

CMMCP WEEKLY SURVEILLANCE REPORT



EPI week #25
Jun. 16 – 22, 2013

Frank Cornine, *Field Biologist*
Curtis Best, *Staff Entomologist*
Juliana Miller, *Entomologist*
Tim McGlinchy, *Director of Operations*
Tim Deschamps, *Executive Director*

Central Mass. Mosquito Control Project
Weekly Report- 6/16/13-6/22/13
EPI Week #25

Cumulative Surveillance Summary

Target Species	<i>Ae. vex</i>	<i>Cq. per</i>	<i>Cs. mel</i>	<i>Oc. can</i>	<i>Culex</i>	All Species
No. Pools	17	37	46	29	74	372
Total Specimens	139	780	469	316	229	2541
No. Pools WNV +	0	0	0	0	0	0
No. Pools EEE +	0	0	0	0	0	0

Weather Summary (Northborough, MA): The weather for this particular week averaged 67.61°F with a recorded high temperature of 85.9°F and a recorded low temperature of only 48.3°F. For this week there was also a total of 1.50 inches of rain observed. Compared to the previous week, it was approximately 5.65°F warmer on average, and rained about 1.71 inches less. There has been 7.97 inches of rain accumulated in June, while the total rainfall for the month of May was 2.87 inches at the CMMCP weather station (4.78" statewide avg.) For the year we have received 9% less requests than average; 3,731 requests to date compared to the 10 year average of 4,057. Requests were 18.5% less than the 2012 totals for the same time frame, 4,424 in 2012 against 3,731 in 2013. Service requests remained about the same from EPI week 24 to Epi week 25 for 2013 (673 vs. 627).

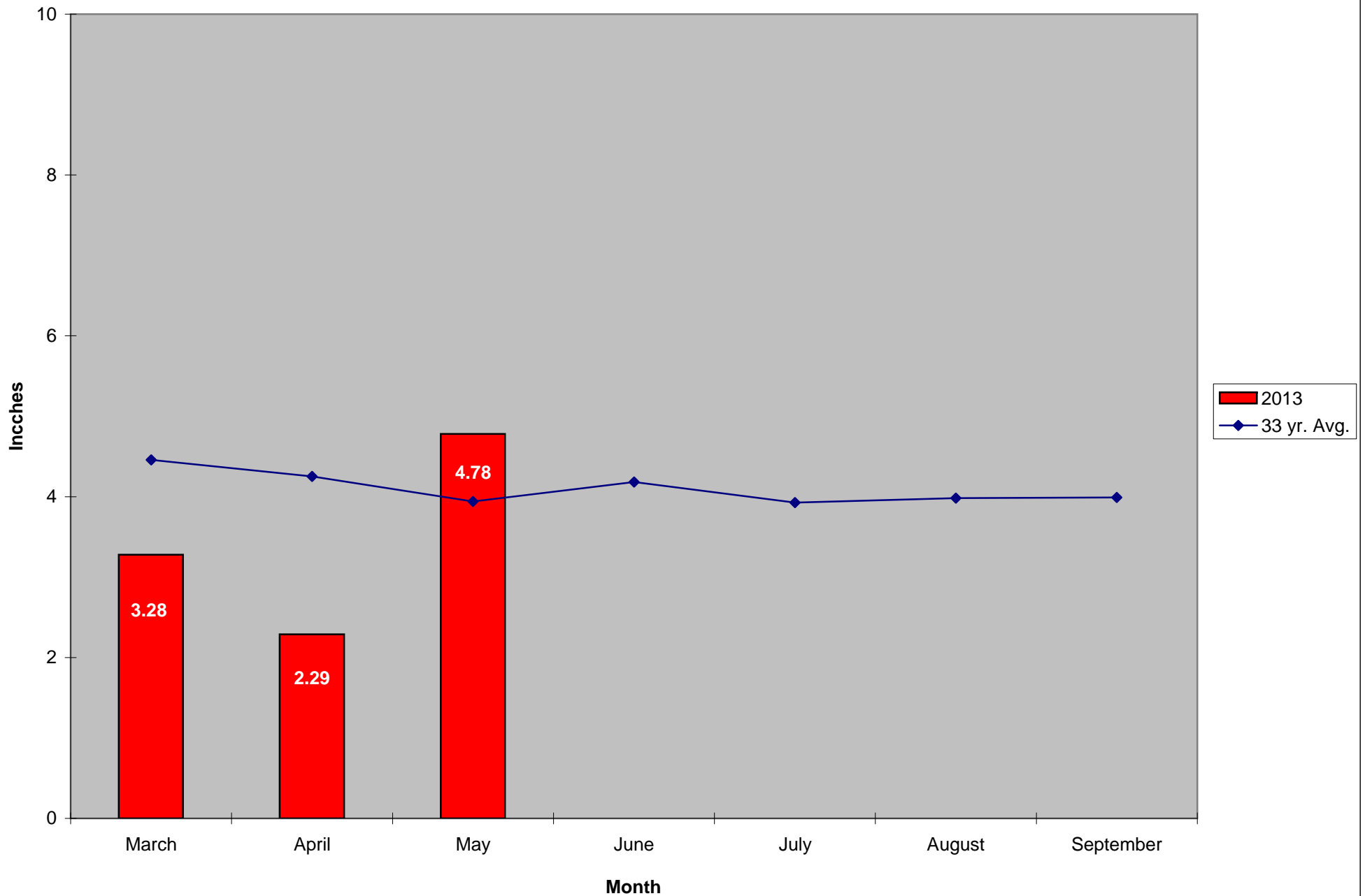
CMMCP Mosquito Summary*-

Target Species	Δ From Last Week	Δ From Last Year	Predominant Trap Site(s)
<i>Aedes vexans</i>	+00.00%	+00.00%	Westborough
<i>Coquillettidia perturbans</i>	-59.65%	-87.70%	Westborough, Westford
<i>Culiseta melanura</i>	-90.70%	-86.67%	Hudson, Ashland
<i>Ochlerotatus canadensis</i>	-100.0%	-100.00%	Westborough, Marlborough
<i>Culex</i> Species	-97.01%	-99.50%	Boylston
All Species	-77.00%	-92.62%	Westborough

The predominant mosquito for the week was *Coquillettidia perturbans* followed by *Ochlerotatus canadensis*.

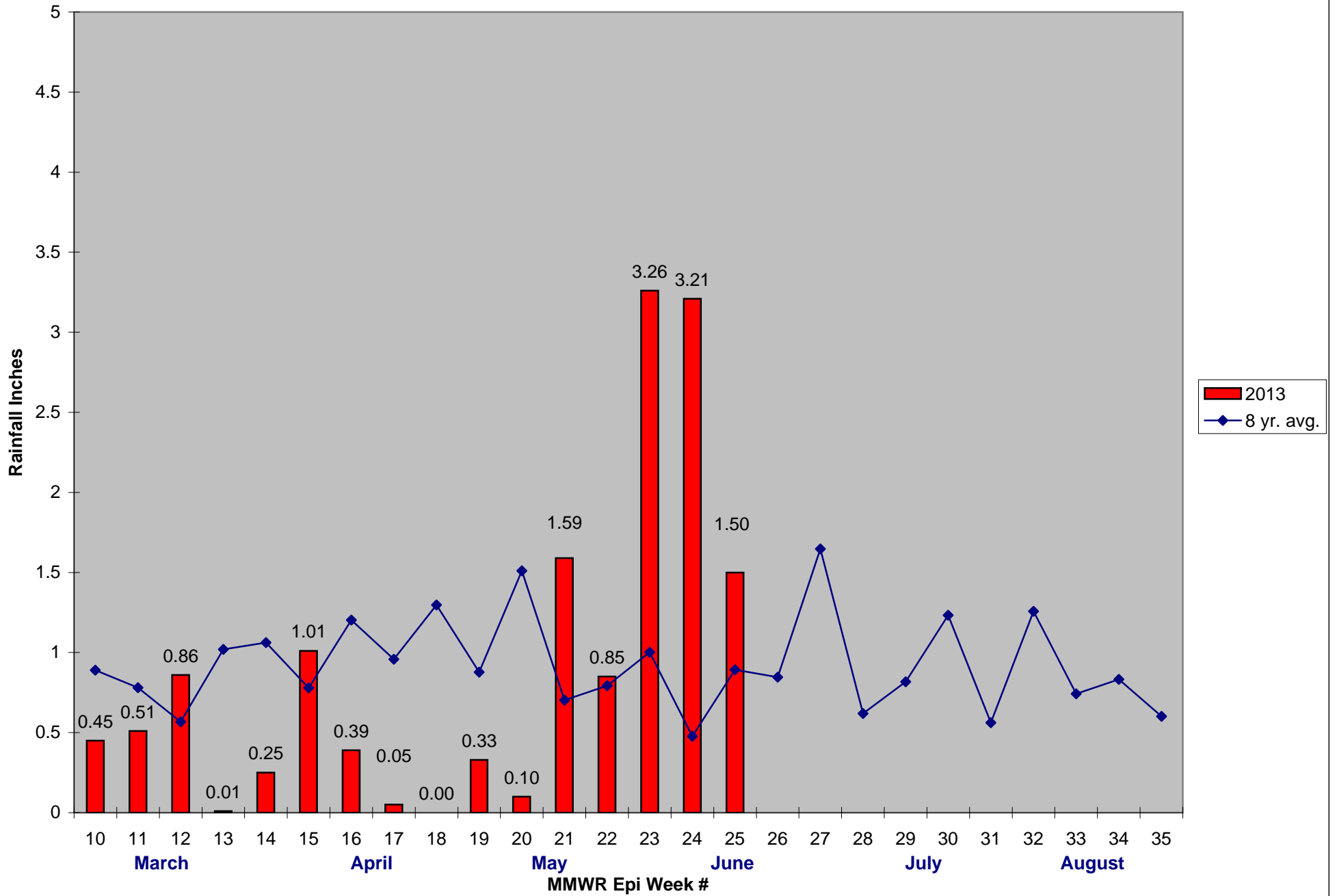
*Low early season numbers may contribute to these comparisons being not as significant as they appear

2013 Mass. Rainfall Data vs. 33 Year Average*



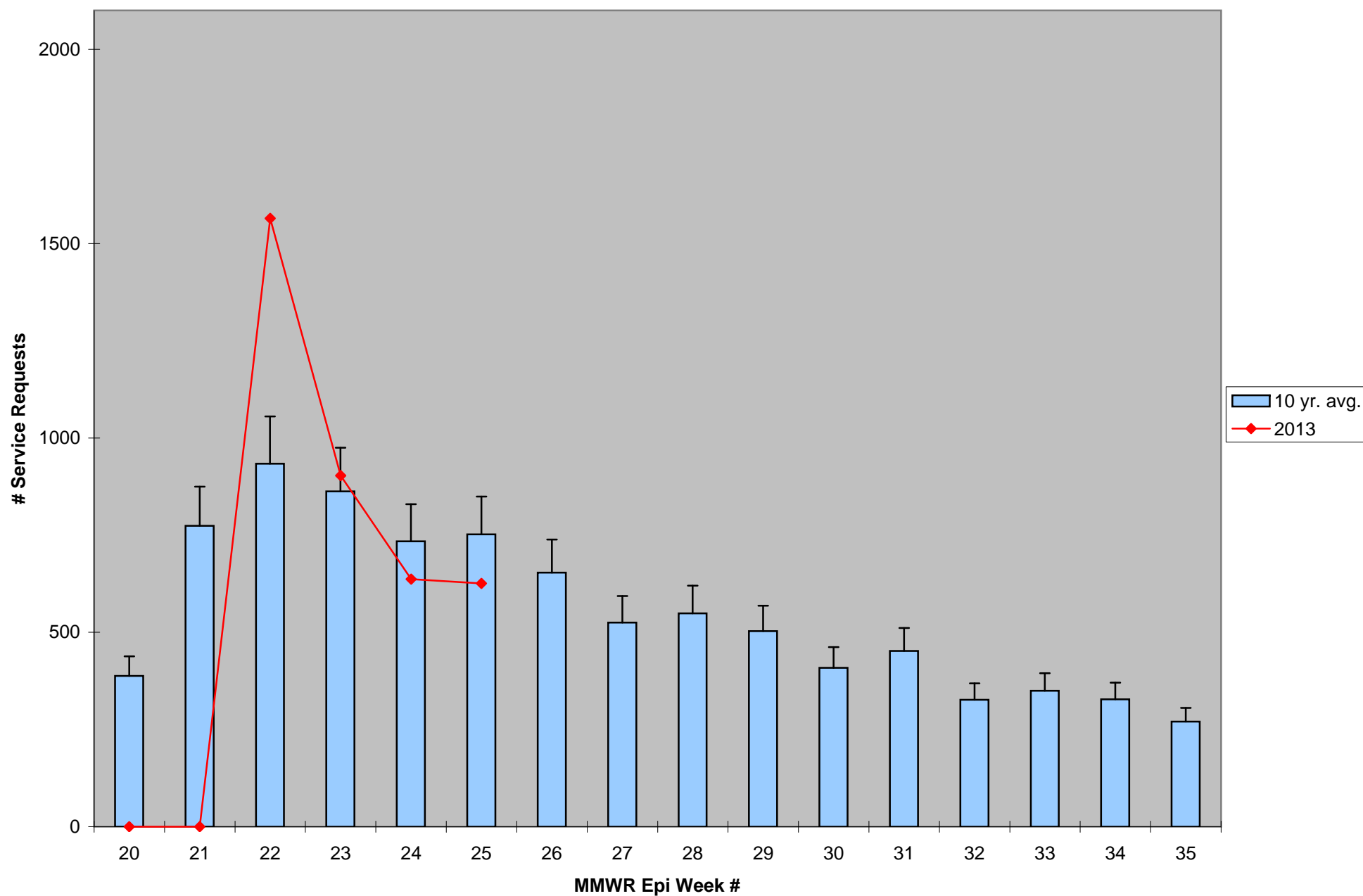
*Source: Northeast Regional Climate Center: http://www.nrcc.cornell.edu/page_summaries.html

2013 CMMCP Weekly Rainfall vs. 8 Year Average*



*Source: CMMCP Weather Station - Northborough, MA

ULV Service Request History Comparison 2003-2013



Error bars show approx. number of requests if we had 40 cities and towns over the 10 year average

2013 Rainfall vs. Requests

