

CMMCP WEEKLY SURVEILLANCE REPORT



EPI week #26
Jun. 26 – July. 2, 2011

Frank Cornine, *Field Biologist*
Curtis Best, *Staff Entomologist*
Tim McGlinchy, *Director of Operations*
Tim Deschamps, *Executive Director*

Central Mass. Mosquito Control Project
Weekly Report- 6/26/11-7/2/11
EPI Week #26

Cumulative Surveillance Summary

Target Species	<i>Ae. vex</i>	<i>Cq. per</i>	<i>Cs. mel</i>	<i>Oc. can</i>	<i>Culex</i>	All Species
No. Pools	4	65	38	39	261	634
Total Specimens	8	1338	247	292	6264	9012
No. Pools WNV +	0	0	0	0	0	0
No. Pools EEE +	0	0	0	0	0	0

Weather Summary (Northborough, MA): The weather for this particular week averaged 71.13°F with a recorded high temperature of 85.50°F and a recorded low temperature of only 54.6°F. For this week there was also a total of 0.12 inches of rain observed. Compared to the previous week, it was approximately 6.17°F warmer on average, and rained about 2.14 inches less. There was 5.26 inches of rain accumulated in June, while the total rainfall for the month of May was 3.06 inches. For the year we have received 76% more requests than average; 8,099 requests to date compared to the 8 year average of 4,588. Requests were 22% more than the 2010 totals; 8,099 in 2011 against 6,616 in 2010.

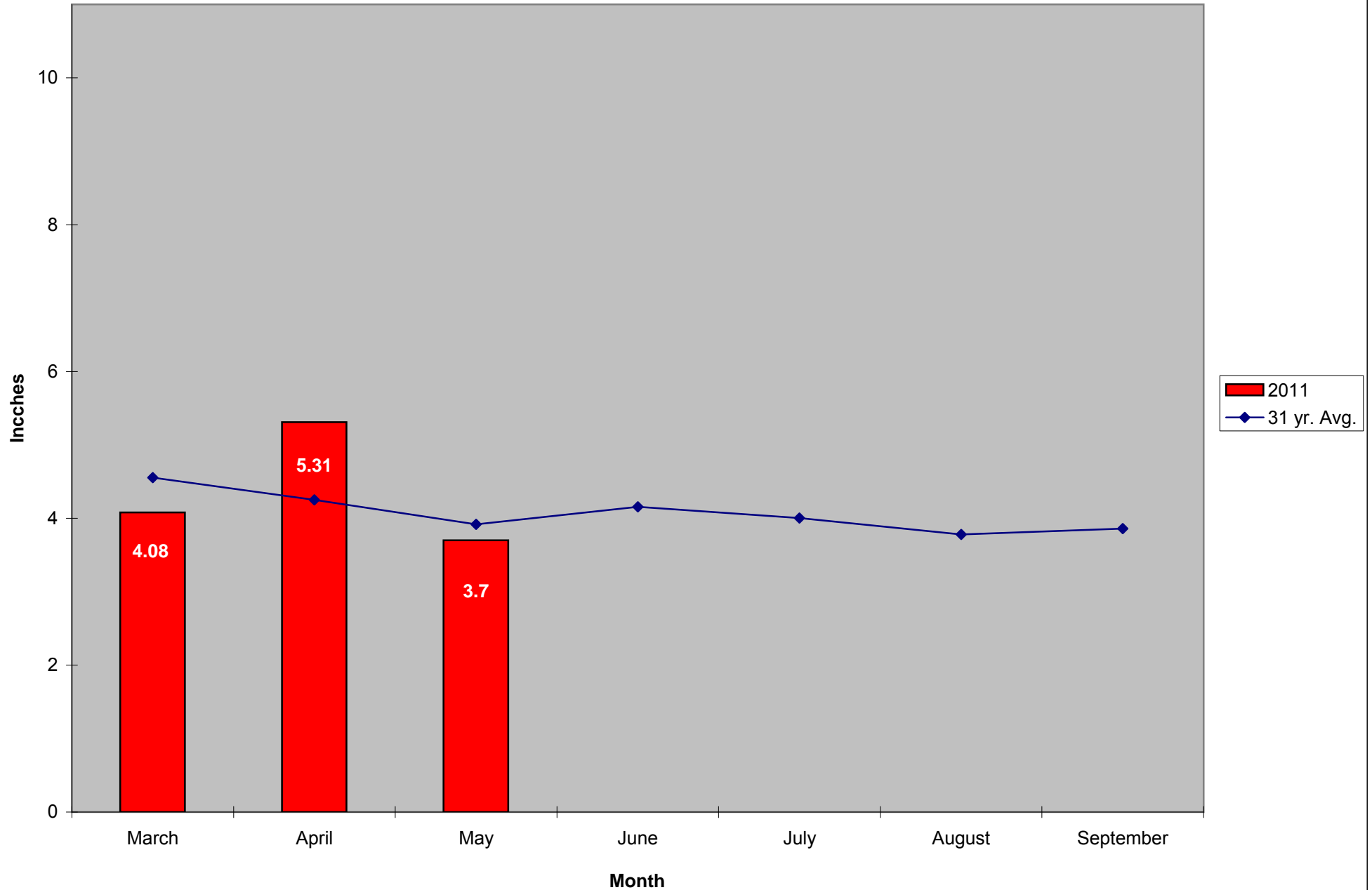
CMMCP Mosquito Summary*-

Target Species	Δ From Last Week	Δ From Last Year	Predominant Trap Site(s)
-----------------------	-----------------------------	-----------------------------	---------------------------------

<i>Aedes vexans</i>	+0.00%	-100.0%	N/A
<i>Coquillettidia perturbans</i>	+796.6%	-1.50%	Sturbridge, Leominster
<i>Culiseta melanura</i>	+29.41%	-15.38%	Tewksbury, Wilmington
<i>Ochlerotatus canadensis</i>	+228.6%	+331.3%	Webster, Wilmington
<i>Culex</i> Species	-39.82%	+125.3%	Westford, Ashland
All Species	+24.94%	+32.84%	Leominster, Sturbridge

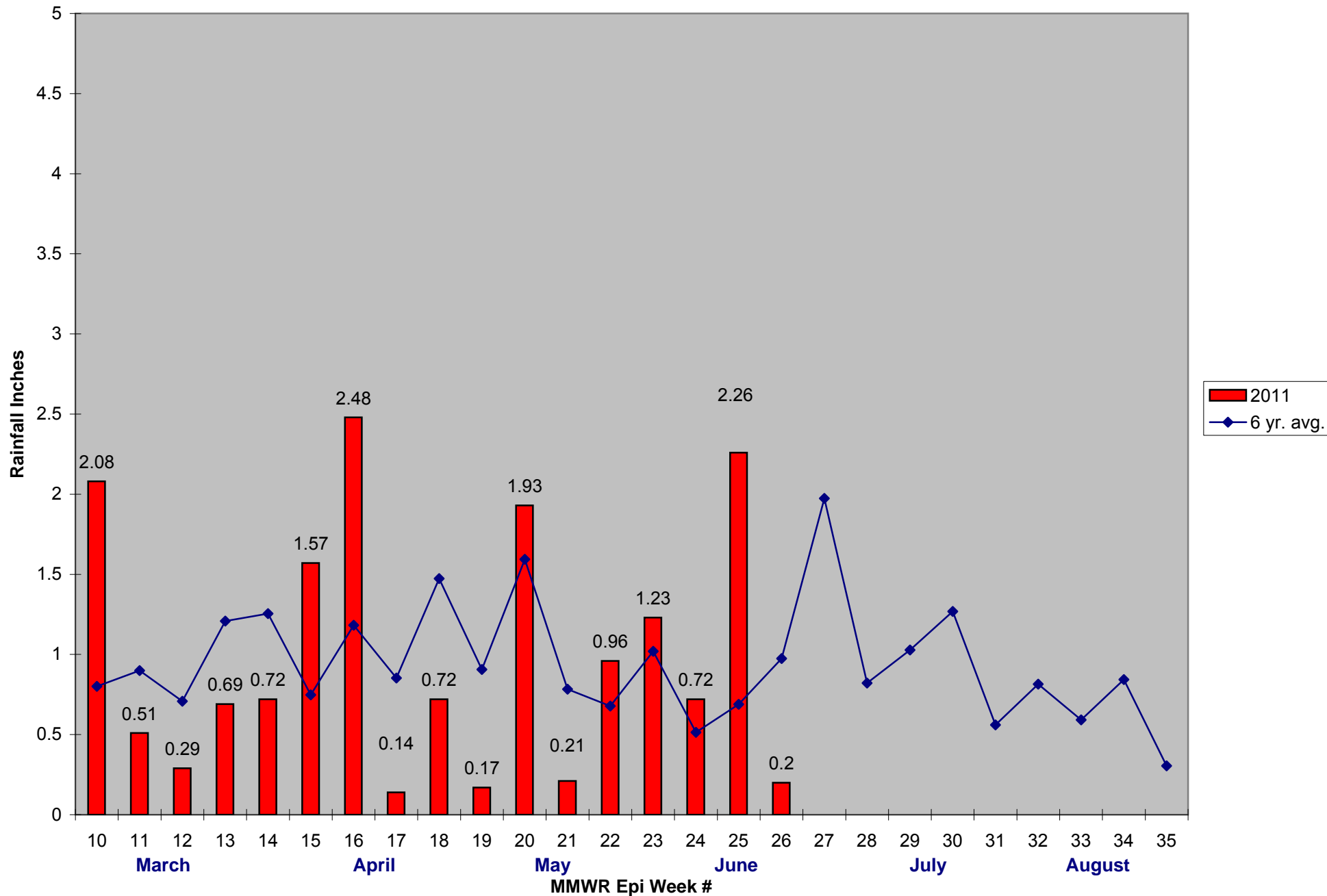
The predominant mosquito for the week was *Coquillettidia perturbans*
followed by *Culex* spp.

2011 Mass. Rainfall Data vs. 31 Year Average*



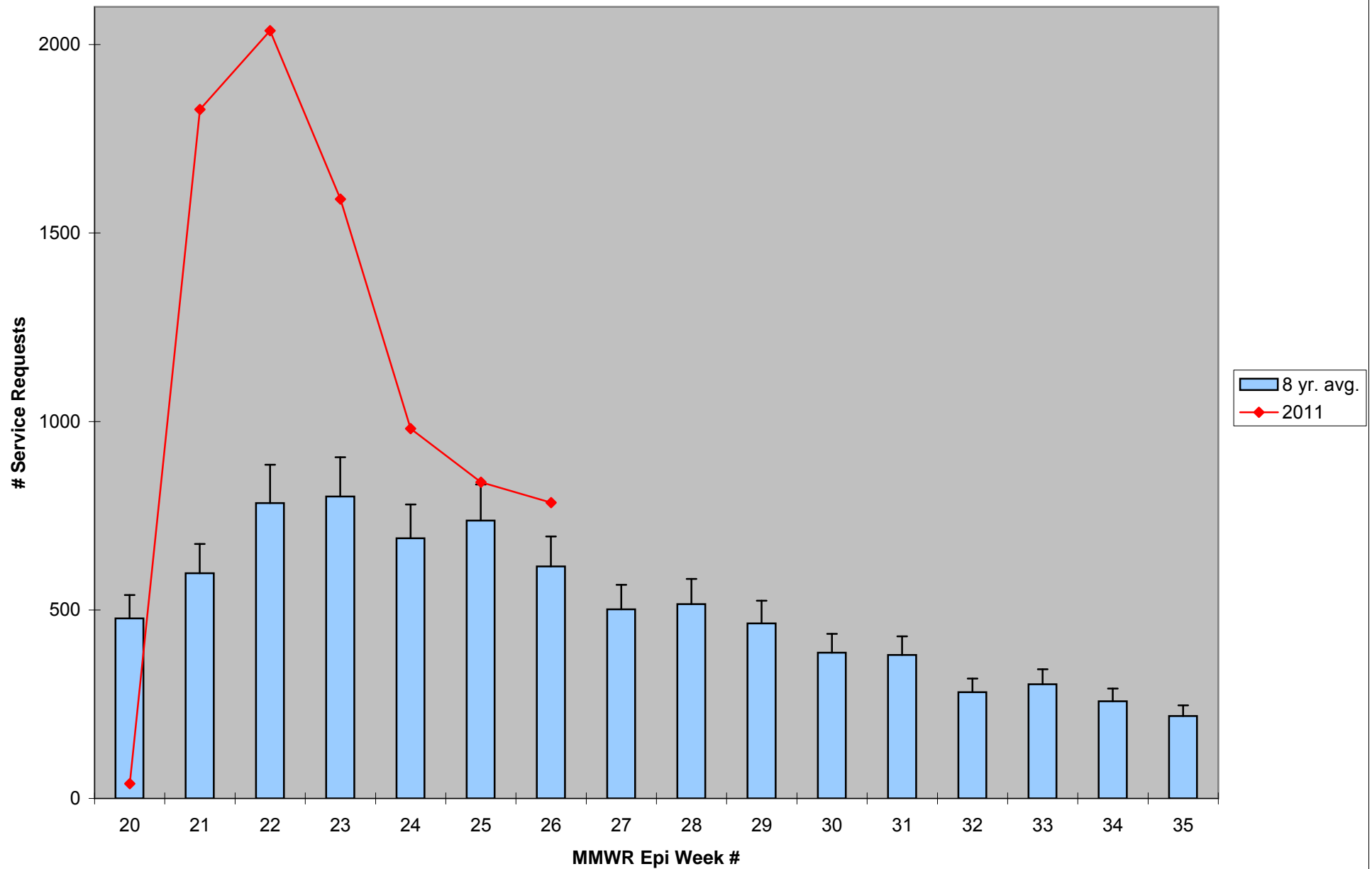
*Source: Northeast Regional Climate Center: http://www.nrcc.cornell.edu/page_summaries.html

2011 CMMCP Weekly Rainfall vs. 6 Year Average*



*Source: CMMCP Weather Station - Northborough, MA

ULV Service Request History Comparison 2003-2011



Error bars show approx. number of requests if we had 38 cities and towns over the 7 year average

2011 Rainfall vs. Requests

2011 Rainfall vs. Requests

