

CMMCP WEEKLY SURVEILLANCE REPORT



EPI week #26
Jun. 24 – 30, 2012

Frank Cornine, *Field Biologist*
Curtis Best, *Staff Entomologist*
Juliana Miller, *Entomologist*
Tim McGlinchy, *Director of Operations*
Tim Deschamps, *Executive Director*

Central Mass. Mosquito Control Project
Weekly Report- 6/24/12-6/30/12
EPI Week #26

Cumulative Surveillance Summary

Target Species	<i>Ae. vex</i>	<i>Cq. per</i>	<i>Cs. mel</i>	<i>Oc. can</i>	<i>Culex</i>	All Species
No. Pools	15	85	98	51	239	720
Total Specimens	27	2302	1204	242	3747	8365
No. Pools WNV +	0	0	0	0	0	0
No. Pools EEE +	0	0	0	0	0	0

Weather Summary (Northborough, MA): The weather for this particular week averaged 70.84°F with a recorded high temperature of 91.7°F and a recorded low temperature of only 56.2°F. For this week there was also a total of 0.72 inches of rain observed. Compared to the previous week, it was approximately 1.32°F cooler on average, and rained about .03 inches less. There has been 2.26 inches of rain accumulated in June, while the total rainfall for the month of May was 4.01 inches at the CMMCP weather station (4.85" statewide). For the year we have received 13% more requests than average; 5,255 requests to date compared to the 9 year average of 4,651. Requests were 53% less than the 2011 totals for the same time frame, 8,060 in 2011 against 5,255 in 2012. Service requests increased 6% from EPI week 25 to Epi week 26 for 2012 (783 vs. 831) likely due to no/low rain events minimizing residents exposure to the existing mosquito population as well as a hatch of *Cq. perturbans*.

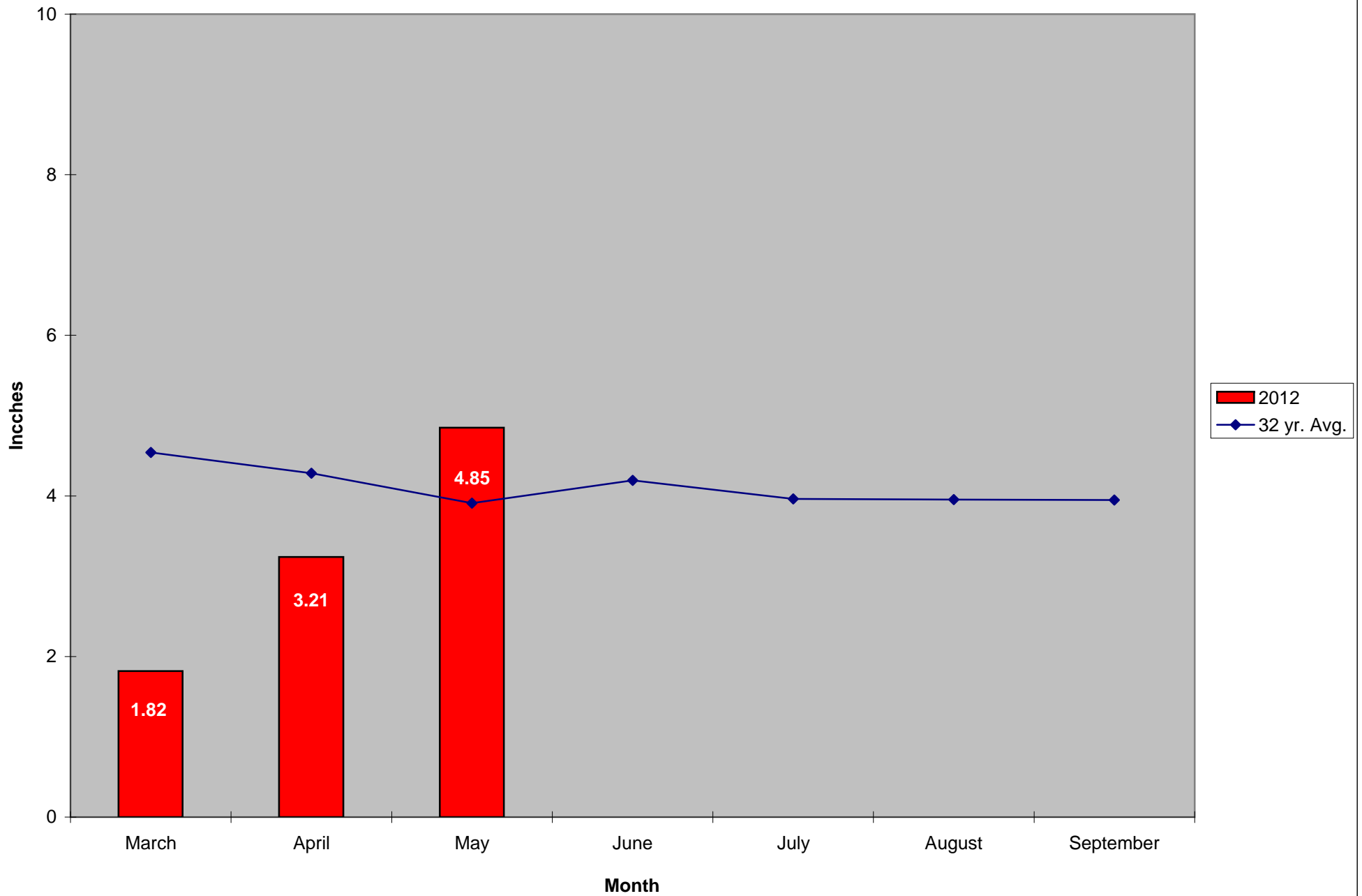
CMMCP Mosquito Summary-

Target Species	Δ From Last Week	Δ From Last Year	Predominant Trap Site(s)
----------------	---------------------	---------------------	--------------------------

<i>Aedes vexans</i>	+50.00%	+300.0%	Millville, Billerica
<i>Coquillettidia perturbans</i>	+112.8%	-1.430%	Tewksbury, Lunenburg
<i>Culiseta melanura</i>	+60.44%	+563.6%	Tewksbury, Millbury
<i>Ochlerotatus canadensis</i>	+11.86%	-4.350%	Millville, Wilmington
<i>Culex</i> Species	-30.14%	-24.77%	Ashland, Natick, Sherborn
All Species	+22.25%	-1.870%	Tewksbury, Lunenburg

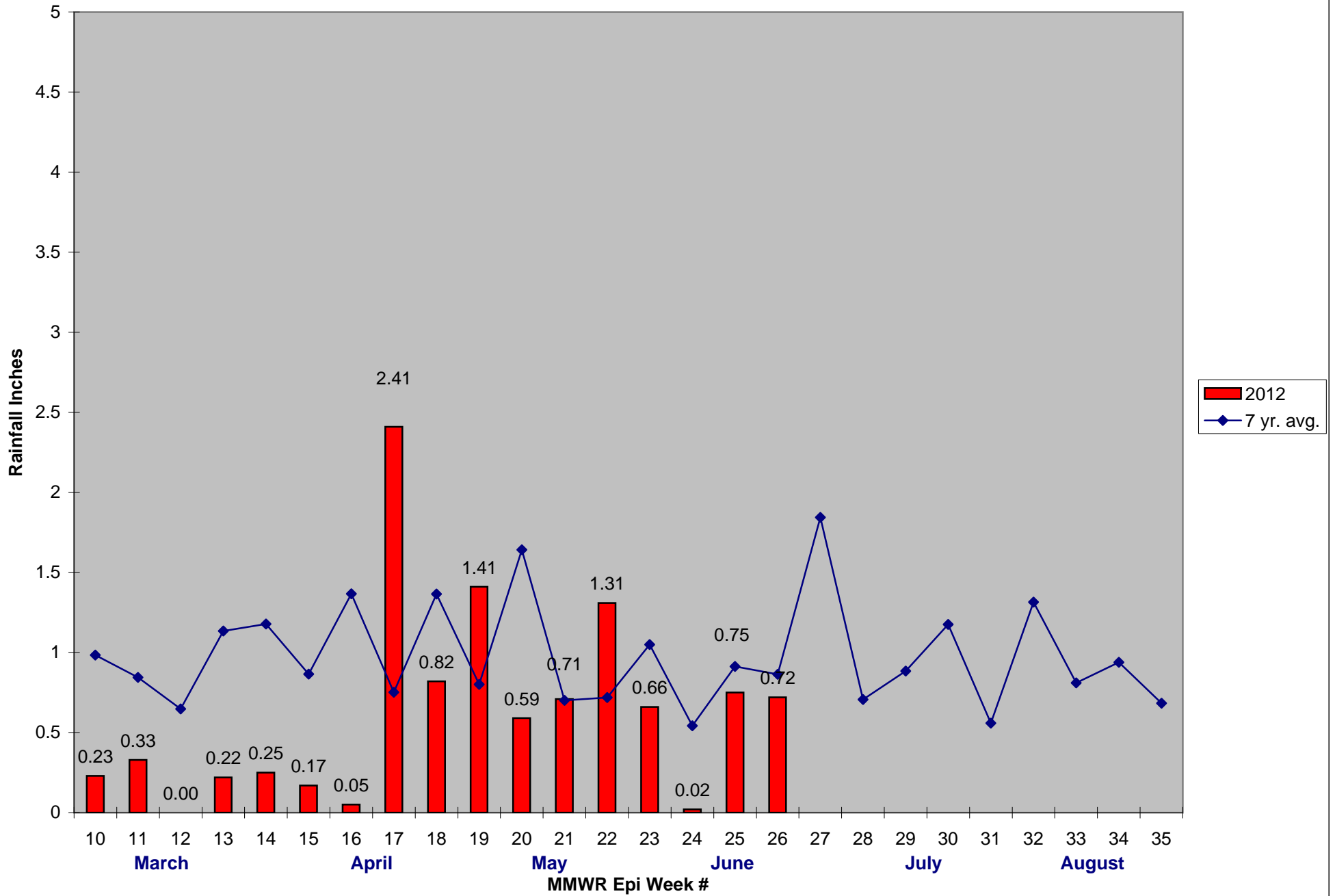
The predominant mosquito for the week was *Coquillettidia perturbans*, followed by *Culex* Species.

2012 Mass. Rainfall Data vs. 32 Year Average*



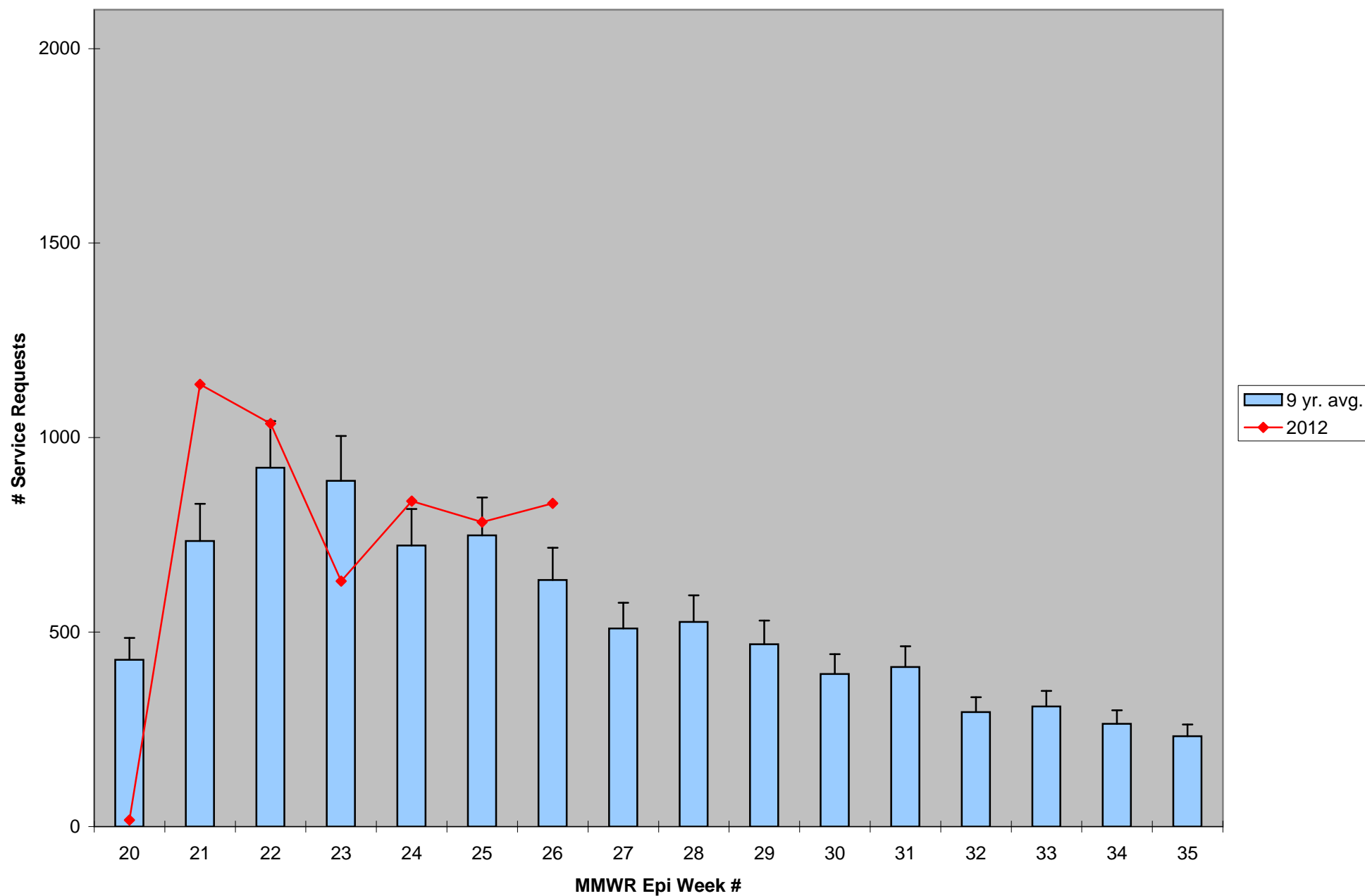
*Source: Northeast Regional Climate Center: http://www.nrcc.cornell.edu/page_summaries.html

2012 CMMCP Weekly Rainfall vs. 7 Year Average*



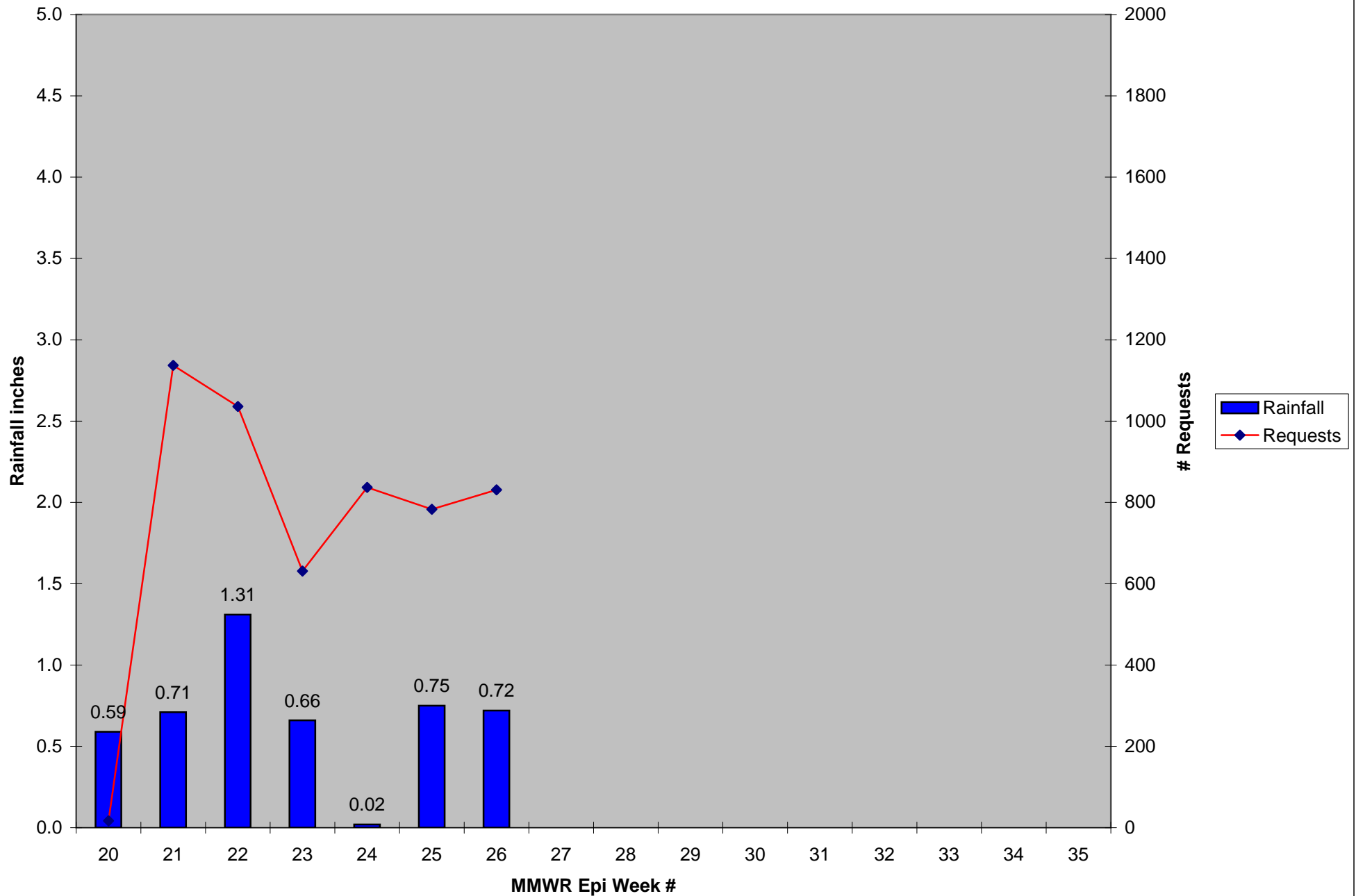
*Source: CMMCP Weather Station - Northborough, MA

ULV Service Request History Comparison 2003-2012



Error bars show approx. number of requests if we had 40 cities and towns over the 9 year average

2012 Rainfall vs. Requests



2012 Temp vs. Requests

