

CMMCP WEEKLY SURVEILLANCE REPORT



EPI week #27
July 3 – 9, 2011

Frank Cornine, *Field Biologist*
Curtis Best, *Staff Entomologist*
Tim McGlinchy, *Director of Operations*
Tim Deschamps, *Executive Director*

Central Mass. Mosquito Control Project
Weekly Report- 7/3/11-7/9/11
EPI Week #27

Cumulative Surveillance Summary

Target Species	<i>Ae. vex</i>	<i>Cq. per</i>	<i>Cs. mel</i>	<i>Oc. can</i>	<i>Culex</i>	All Species
No. Pools	5	73	44	39	303	740
Total Specimens	9	1478	267	292	7166	10208
No. Pools WNV +	0	0	0	0	0	0
No. Pools EEE +	0	0	0	0	0	0

Weather Summary (Northborough, MA): The weather for this particular week averaged 74.33°F with a recorded high temperature of 91.0°F and a recorded low temperature of only 61.9°F. For this week there was also a total of 1.07 inches of rain observed. Compared to the previous week, it was approximately 3.2°F warmer on average, and rained about 0.95 inches more. There has been 1.07 inches of rain accumulated in July, while the total rainfall for the month of June was 5.26 inches. For the year we have received 70% more requests than average; 8,671 requests to date compared to the 8 year average of 5,104. Requests were 14% more than the 2010 totals; 8,099 in 2011 against 7,102 in 2010.

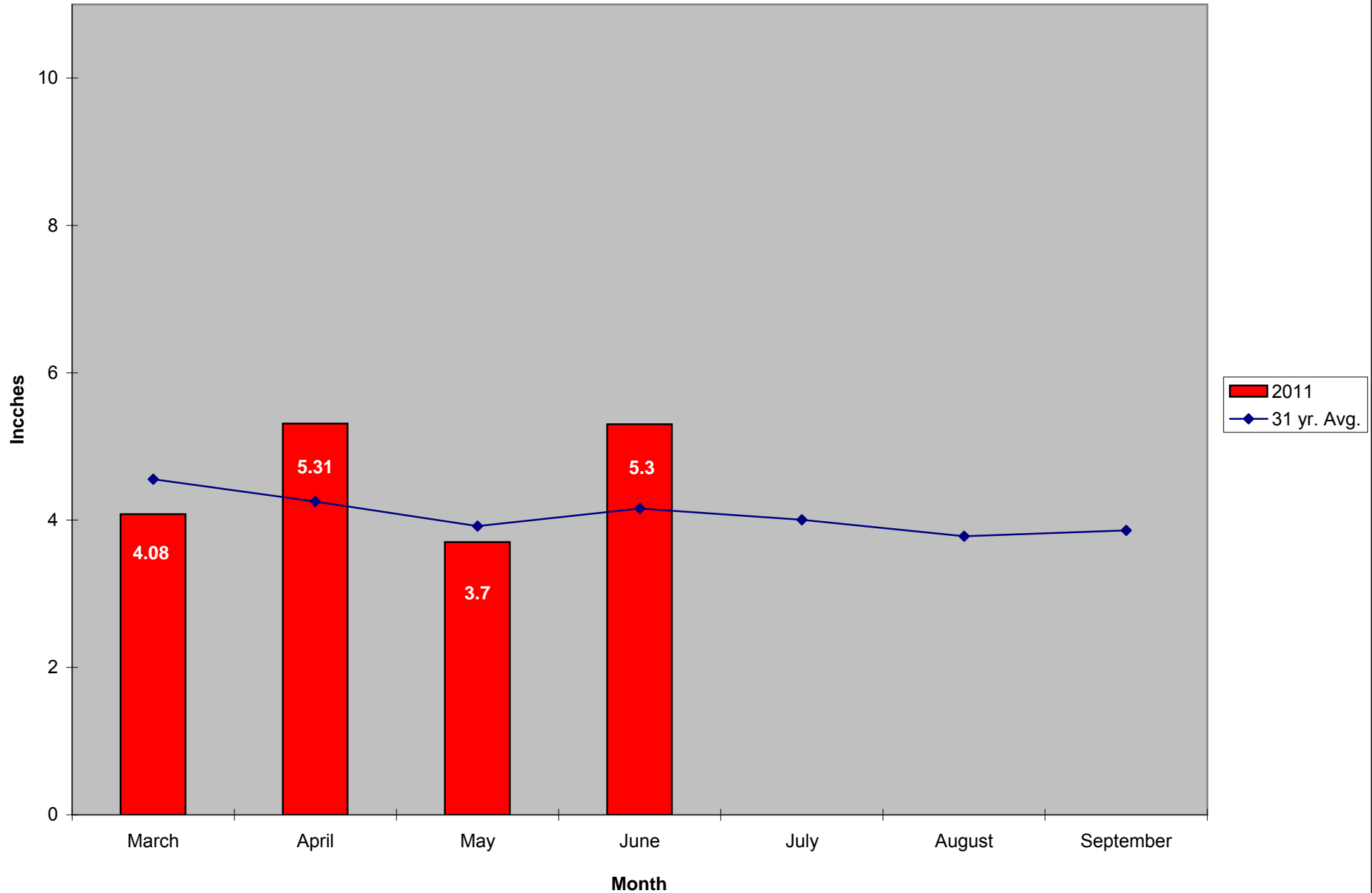
CMMCP Mosquito Summary*-

Target Species Δ From Δ From Predominant Trap Site(s)
Last Week Last Year

<i>Aedes vexans</i>	+100.0%	-83.33%	Auburn
<i>Coquillettidia perturbans</i>	-56.66%	-61.11%	Shrewsbury, Boxborough
<i>Culiseta melanura</i>	+300.0%	+400.0%	Shrewsbury, Holliston
<i>Ochlerotatus canadensis</i>	-100.0%	-100.0%	N/A
<i>Culex</i> Species	-21.11%	+273.8%	Shrewsbury, Acton
All Species	-34.09%	+25.70%	Shrewsbury

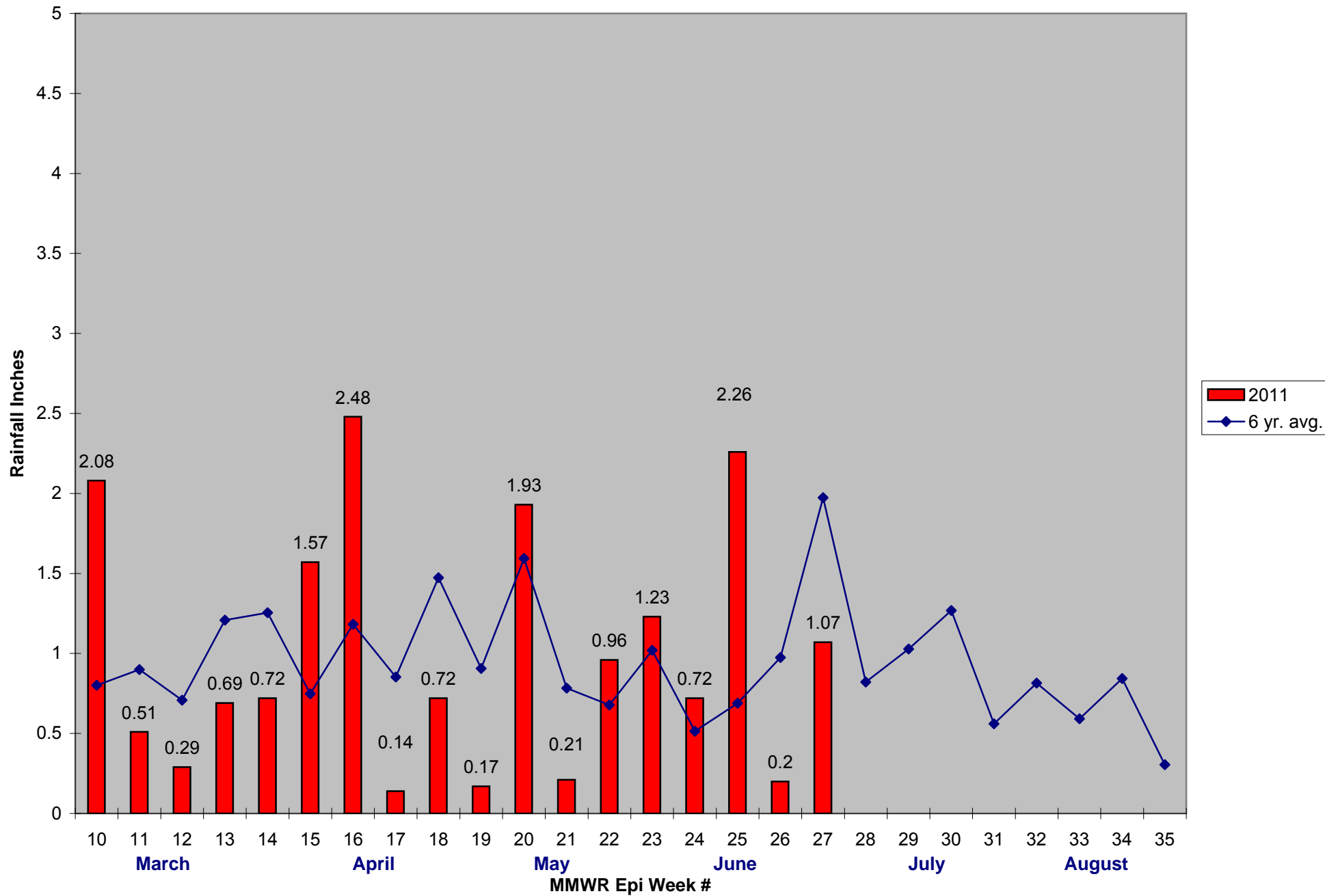
The predominant mosquito for the week was *Culex* spp.
followed by *Coquillettidia perturbans*.

2011 Mass. Rainfall Data vs. 31 Year Average*



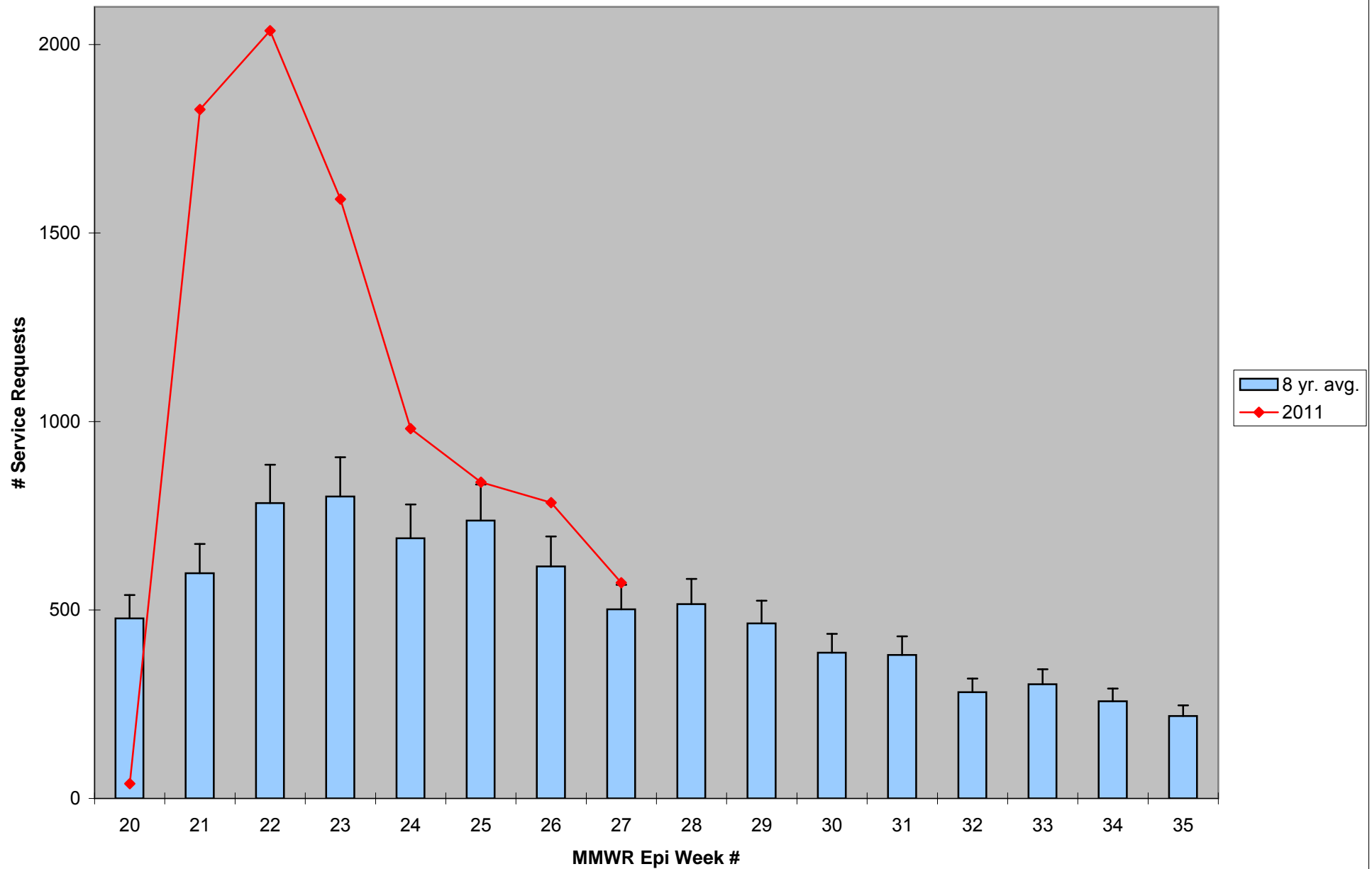
*Source: Northeast Regional Climate Center: http://www.nrcc.cornell.edu/page_summaries.html

2011 CMMCP Weekly Rainfall vs. 6 Year Average*



*Source: CMMCP Weather Station - Northborough, MA

ULV Service Request History Comparison 2003-2011



Error bars show approx. number of requests if we had 38 cities and towns over the 7 year average

2011 Rainfall vs. Requests

2011 Rainfall vs. Requests

