

# CMMCP WEEKLY SURVEILLANCE REPORT



**EPI week #27**  
**Jun. 30 – July. 6, 2013**

**Frank Cornine**, *Field Biologist*  
**Curtis Best**, *Staff Entomologist*  
**Juliana Miller**, *Entomologist*  
**Tim McGlinchy**, *Director of Operations*  
**Tim Deschamps**, *Executive Director*

**Central Mass. Mosquito Control Project**  
**Weekly Report- 6/30/13-7/6/13**  
**EPI Week #27**

**Cumulative Surveillance Summary**

<b>Target Species</b>	<b><i>Ae. vex</i></b>	<b><i>Cq. per</i></b>	<b><i>Cs. mel</i></b>	<b><i>Oc. can</i></b>	<b><i>Culex</i></b>	<b>All Species</b>
<b>No. Pools</b>	40	89	72	49	170	811
<b>Total Specimens</b>	440	4284	701	614	1524	8706
<b>No. Pools WNV +</b>	0	0	0	0	0	0
<b>No. Pools EEE +</b>	0	0	0	0	0	0

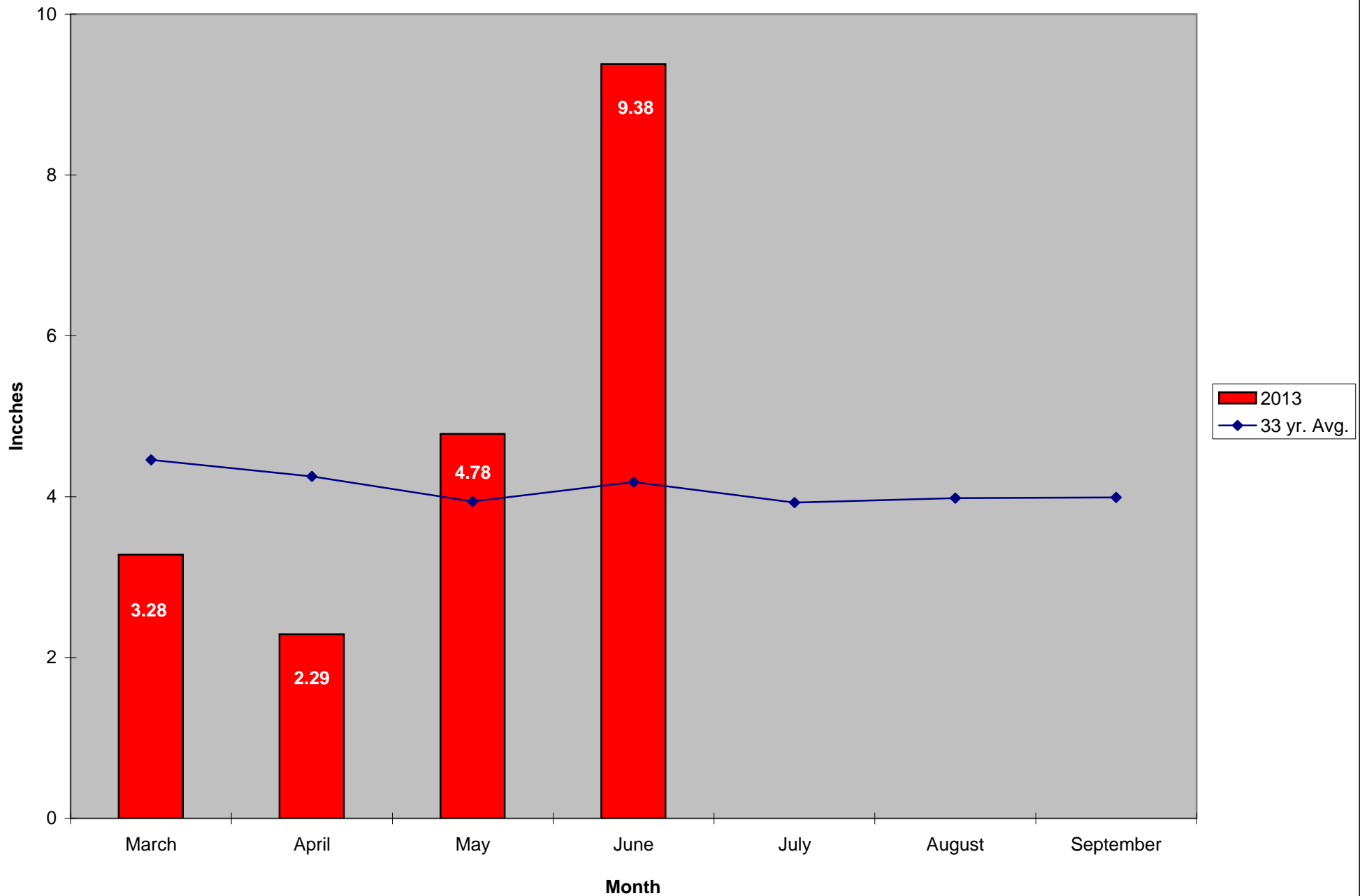
**Weather Summary (Northborough, MA):** The weather for this particular week averaged 78.84°F with a recorded high temperature of 93.5°F and a recorded low temperature of only 63.9°F. For this week there was also a total of 0.05 inches of rain observed. Compared to the previous week, it was approximately 4.10°F warmer on average, and rained about .47 inches less. There has been 0.05 inches of rain accumulated in July, while the total rainfall for the month of June was 8.49 inches. For the year we have received 3% more requests than average; 4,086 requests to date compared to the 10 year average of 3,960. Requests were 9.4% less than the 2012 totals for the same time frame, 4,472 in 2012 against 4,086 in 2013. Service requests increased 49% from EPI week 26 to Epi week 27 for 2013 (981 vs. 1,469).

**CMMCP Mosquito Summary\*-**

<b>Target Species</b>	<b>Δ From Last Week</b>	<b>Δ From Last Year</b>	<b>Predominant Trap Site(s)</b>
<i>Aedes vexans</i>	-72.41%	+700.0%	Northborough, Auburn
<i>Coquillettidia perturbans</i>	-76.50%	+139.6%	Shrewsbury, Hopkinton
<i>Culiseta melanura</i>	-83.75%	-43.48%	Hopkinton, Boxborough
<i>Ochlerotatus canadensis</i>	-40.79%	+309.1%	Hopkinton, Stow
<i>Culex</i> Species	+76.92%	-36.11%	Marlborough, Shrewsbury
All Species	-64.02%	+47.64%	Hopkinton, Shrewsbury

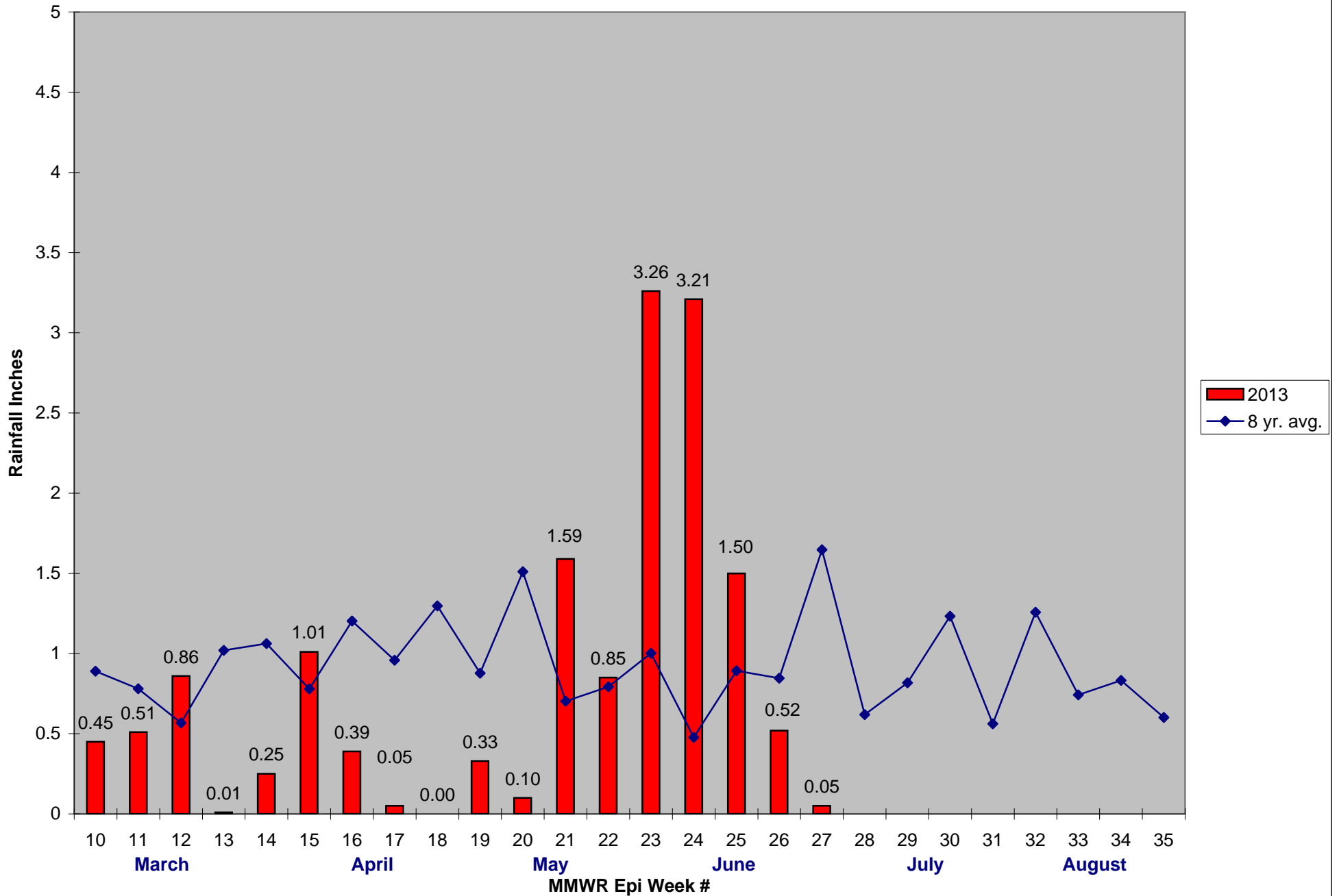
The predominant mosquito for the week was *Coquillettidia perturbans*, followed by *Culex* Species.

### 2013 Mass. Rainfall Data vs. 33 Year Average\*



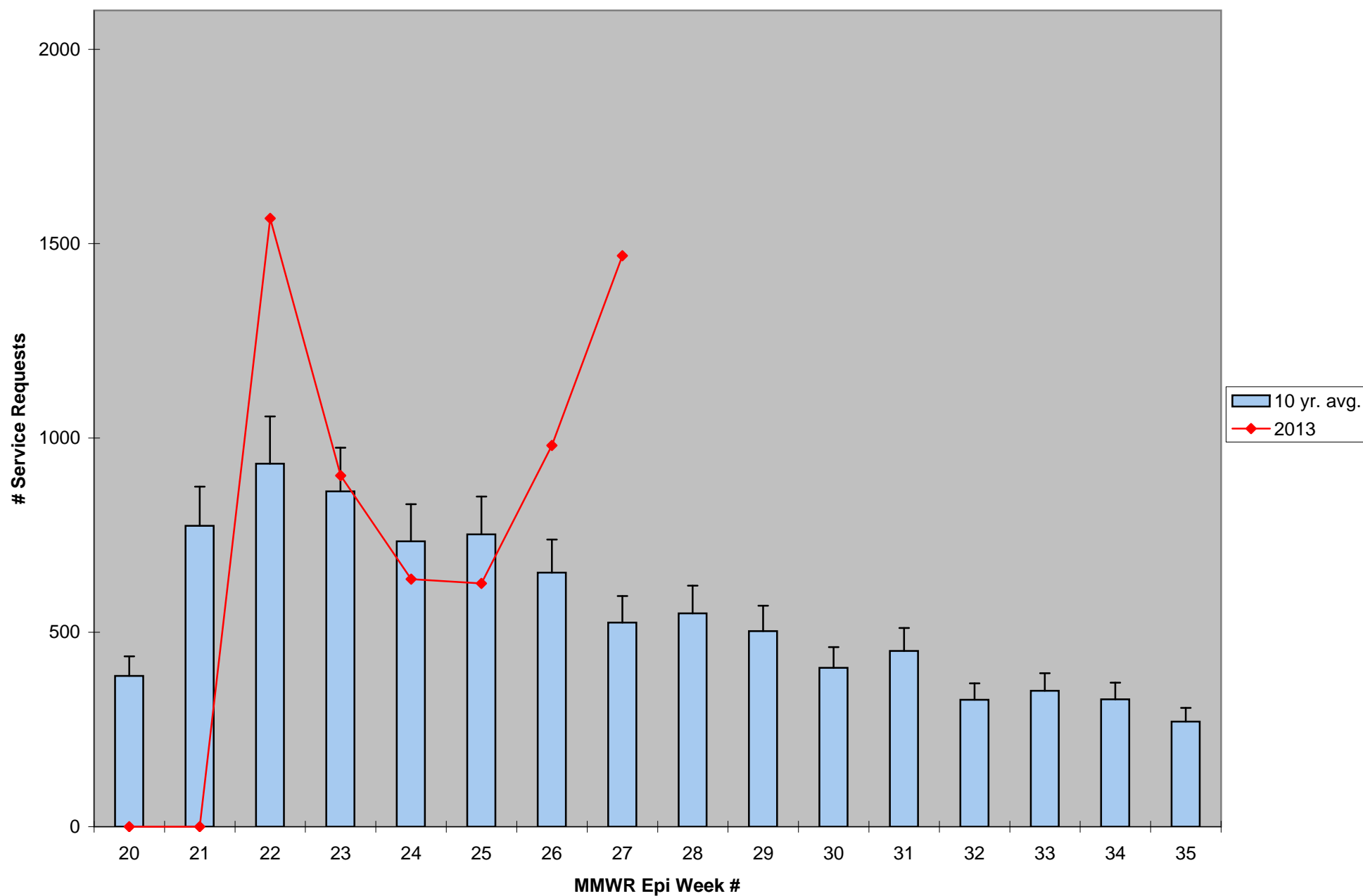
\*Source: Northeast Regional Climate Center: [http://www.nrcc.cornell.edu/page\\_summaries.html](http://www.nrcc.cornell.edu/page_summaries.html)

### 2013 CMMCP Weekly Rainfall vs. 8 Year Average\*



\*Source: CMMCP Weather Station - Northborough, MA

### ULV Service Request History Comparison 2003-2013



Error bars show approx. number of requests if we had 40 cities and towns over the 10 year average

2013 Rainfall vs. Requests

