

CMMCP WEEKLY SURVEILLANCE REPORT



EPI week #28
July 10 – 16, 2011

Frank Cornine, *Field Biologist*
Curtis Best, *Staff Entomologist*
Tim McGlinchy, *Director of Operations*
Tim Deschamps, *Executive Director*

Central Mass. Mosquito Control Project
Weekly Report- 7/10/11-7/16/11
EPI Week #28

Cumulative Surveillance Summary

Target Species	<i>Ae. vex</i>	<i>Cq. per</i>	<i>Cs. mel</i>	<i>Oc. can</i>	<i>Culex</i>	All Species
No. Pools	6	95	52	39	380	896
Total Specimens	10	2257	288	292	10746	14781
No. Pools WNV +	0	0	0	0	0	0
No. Pools EEE +	0	0	0	0	0	0

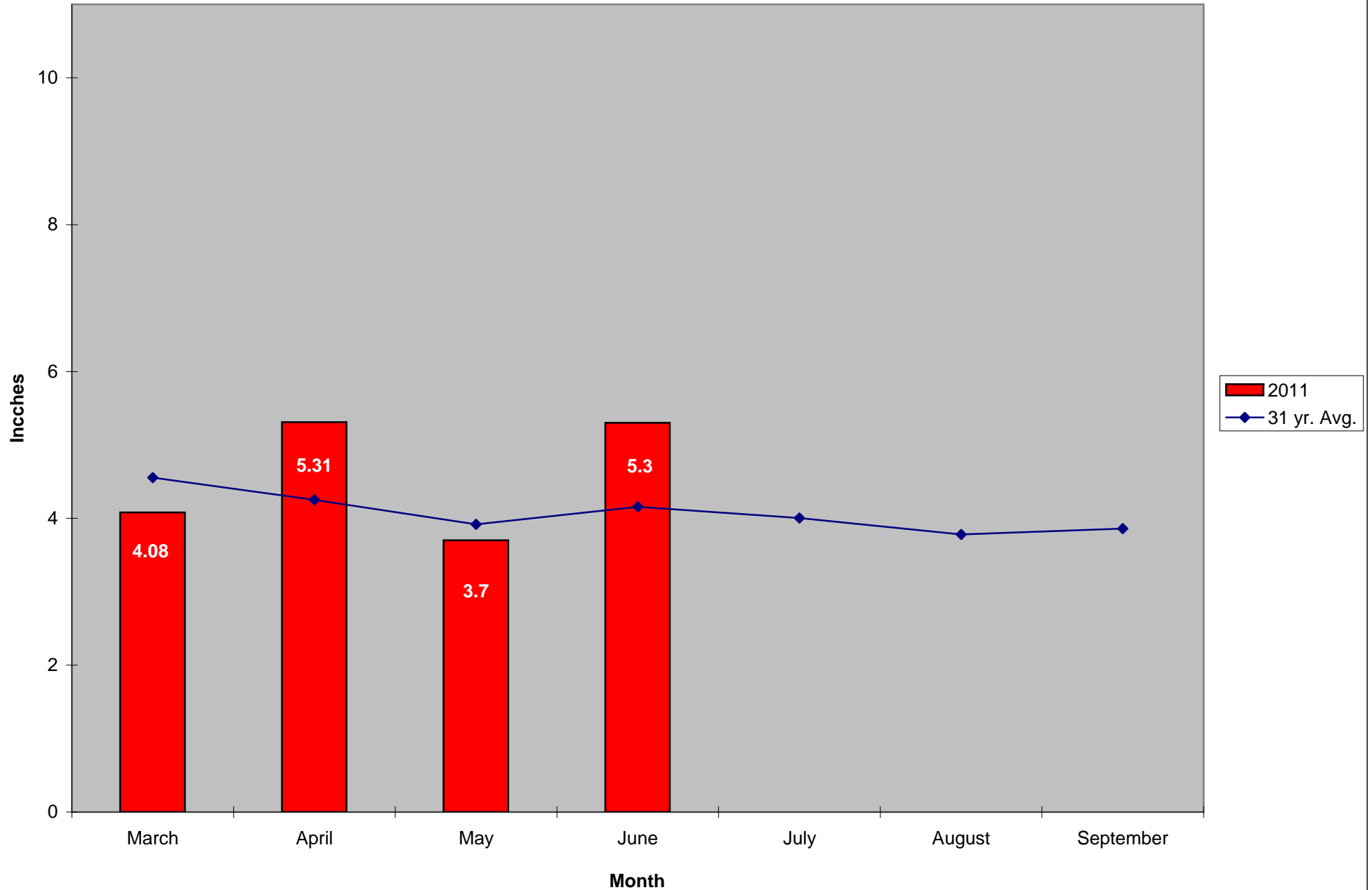
Weather Summary (Northborough, MA): The weather for this particular week averaged 74.46°F with a recorded high temperature of 92.3°F and a recorded low temperature of only 55.1°F. For this week there was also a total of only 0.02 inches of rain observed. Compared to the previous week, it was approximately 0.13°F warmer on average, and rained about 1.05 inches less. There has been 1.09 inches of rain accumulated in July, while the total rainfall for the month of June was 5.26 inches. For the year we have received 62% more requests than average; 9,282 requests to date compared to the 8 year average of 5,719. Requests were 23% more than the 2010 totals; 9,282 in 2011 against 7,557 in 2010. Service requests **increased** 6% from EPI week 27 to Epi week 28 for 2011.

CMMCP Mosquito Summary-

Target Species	Δ From Last Week	Δ From Last Year	Predominant Trap Site(s)
<i>Aedes vexans</i>	+0.000%	+0.000%	Clinton
<i>Coquillettidia perturbans</i>	-2.140%	-2.750%	Lunenburg, Leominster, Millbury
<i>Culiseta melanura</i>	-70.00%	-27.59%	Wilmington, Berlin
<i>Ochlerotatus canadensis</i>	+0.000%	-100.0%	N/A
<i>Culex</i> Species	+197.4%	+575.1%	Auburn, Westford
All Species	+128.6%	+133.3%	Auburn, Westford

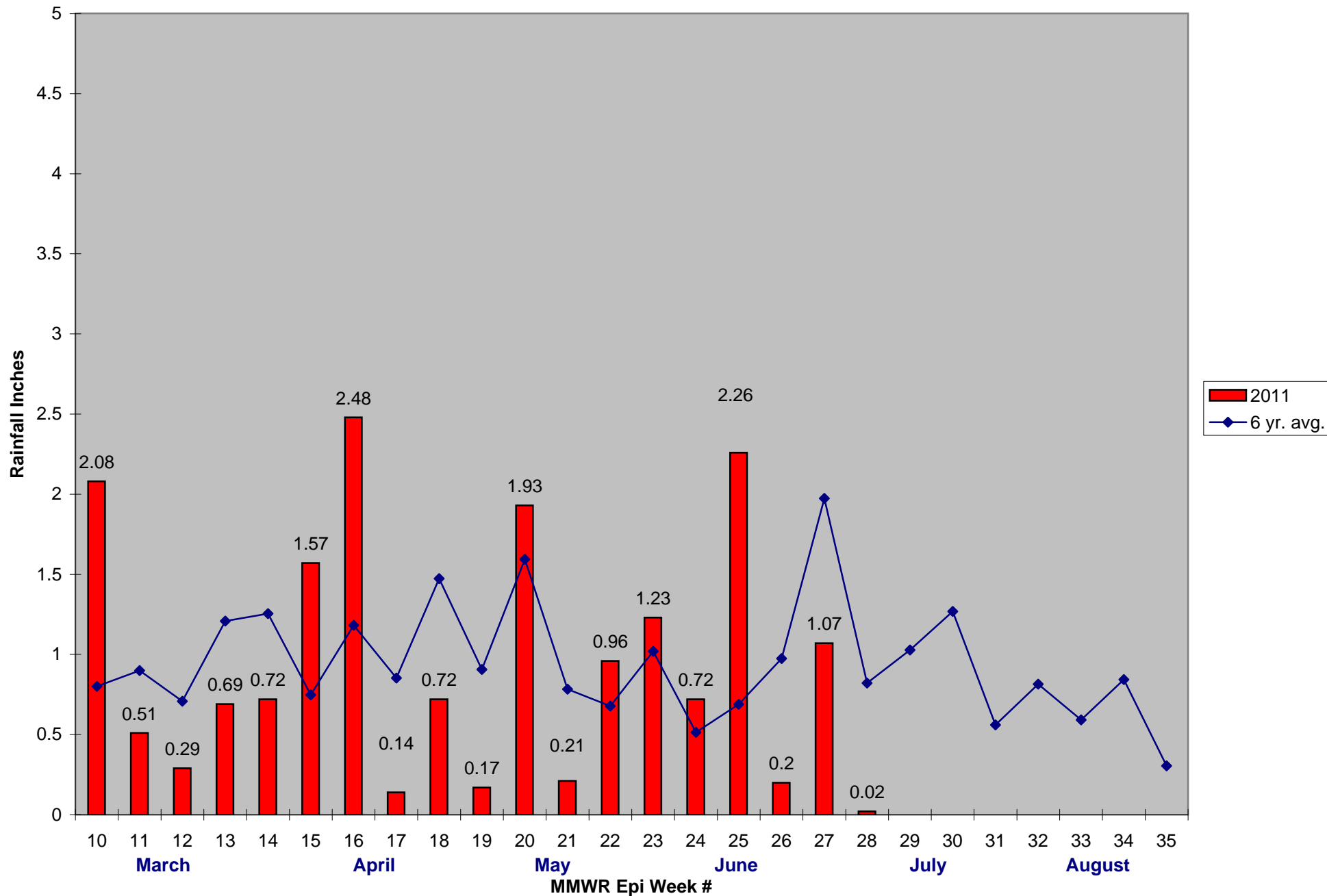
The predominant mosquito for the week was *Culex* spp.
followed by *Coquillettidia perturbans*.

2011 Mass. Rainfall Data vs. 31 Year Average*



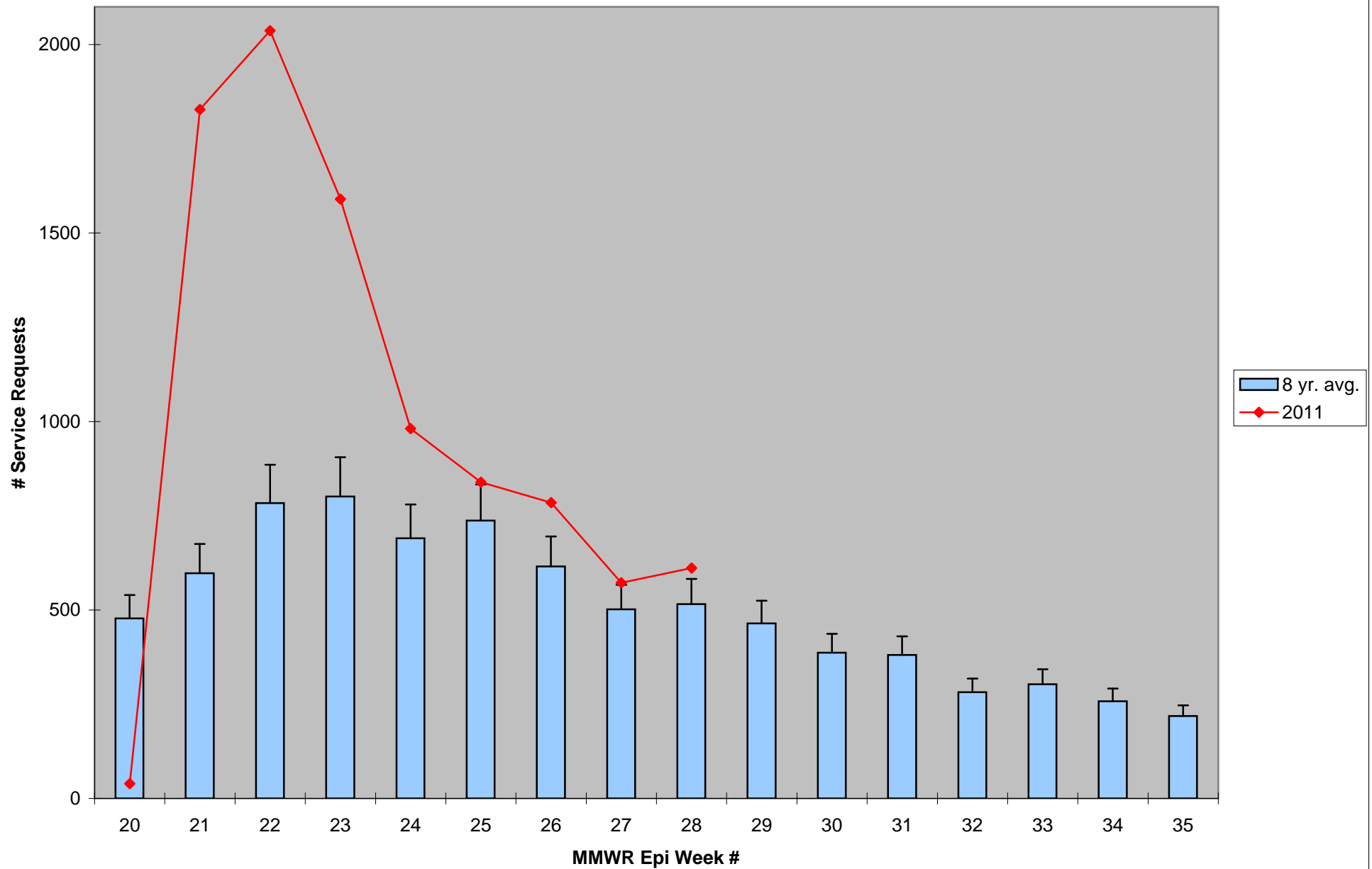
*Source: Northeast Regional Climate Center: http://www.nrcc.cornell.edu/page_summaries.html

2011 CMMCP Weekly Rainfall vs. 6 Year Average*



*Source: CMMCP Weather Station - Northborough, MA

ULV Service Request History Comparison 2003-2011



Error bars show approx. number of requests if we had 38 cities and towns over the 7 year average

2011 Rainfall vs. Requests

