

# CMMCP WEEKLY SURVEILLANCE REPORT



**EPI week #28**  
**Jul. 8 – 14, 2012**

**Frank Cornine**, *Field Biologist*  
**Curtis Best**, *Staff Entomologist*  
**Juliana Miller**, *Entomologist*  
**Tim McGlinchy**, *Director of Operations*  
**Tim Deschamps**, *Executive Director*

**Central Mass. Mosquito Control Project**  
**Weekly Report- 7/8/12-7/14/12**  
**EPI Week #28**

**Cumulative Surveillance Summary**

Target Species	<i>Ae. vex</i>	<i>Cq. per</i>	<i>Cs. mel</i>	<i>Oc. can</i>	<i>Culex</i>	All Species
<b>No. Pools</b>	21	119	121	63	360	1055
<b>Total Specimens</b>	37	3322	1316	283	7036	13228
<b>No. Pools WNV +</b>	0	0	0	0	0	0
<b>No. Pools EEE +</b>	0	0	0	0	0	0

**Weather Summary (Northborough, MA):** The weather for this particular week averaged 75.01°F with a recorded high temperature of 90.7°F and a recorded low temperature of only 54.9°F. For this week there was also a total of 0.00 inches of rain observed. Compared to the previous week, it was approximately 0.48°F cooler on average, and rained about 0.27 inches less. There has been 0.27 inches of rain accumulated in July, while the total rainfall for the month of June was 2.98 inches at the CMMCP weather station (3.86 statewide). For the year we have received 17% more requests than average; 6,677 requests to date compared to the 9 year average of 5,686. Requests were 38% less than the 2011 totals for the same time frame, 9,243 in 2011 against 6,677 in 2012. Service requests increased 12% from EPI week 27 to Epi week 28 for 2012 (671 vs. 751) likely due to media attention on EEE in Southeastern Mass.

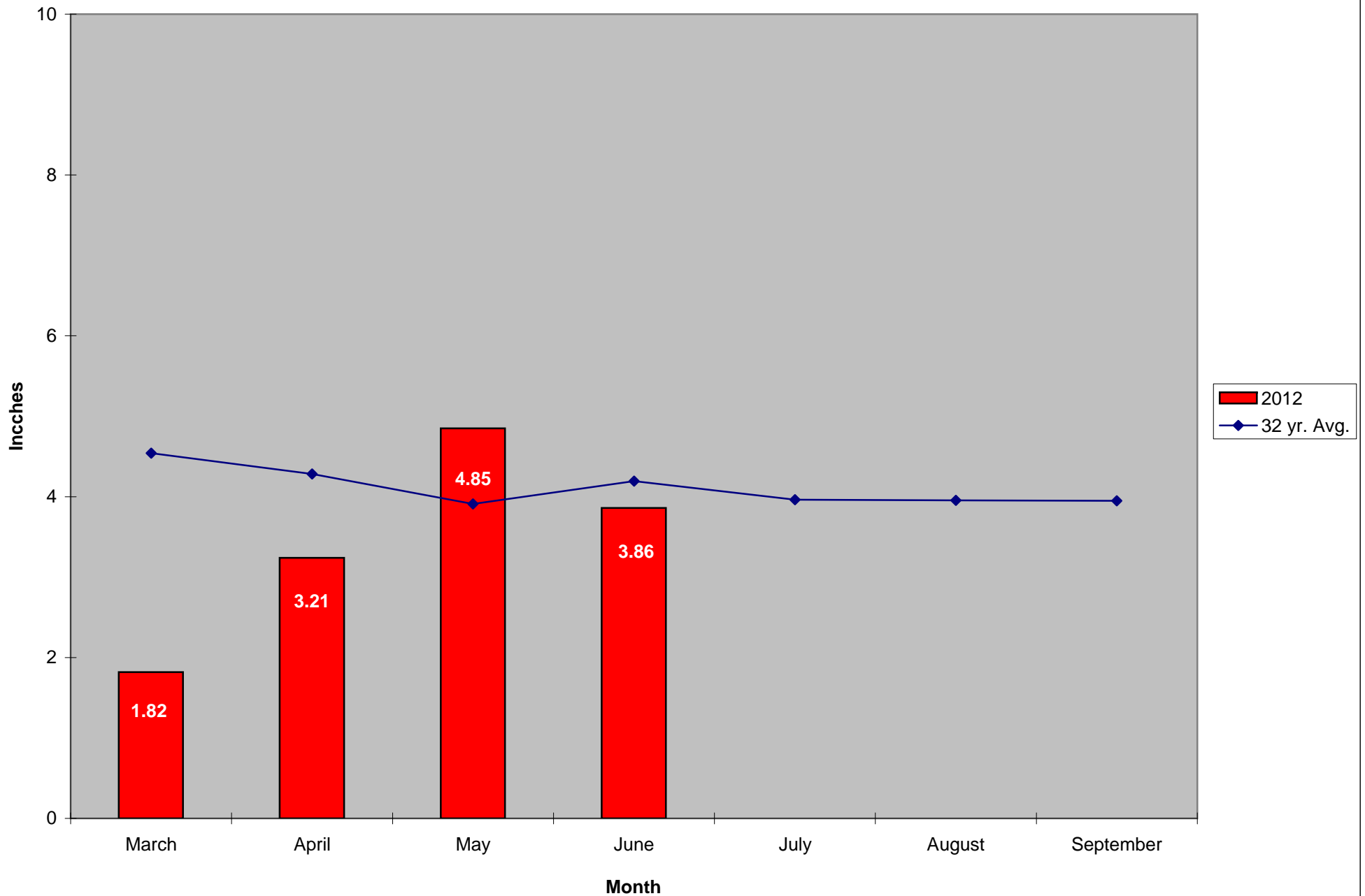
**CMMCP Mosquito Summary-**

**Target Species                      Δ From              Δ From              Predominant Trap Site(s)**  
**Last Week              Last Year**

<i>Aedes vexans</i>	+100.0%	+700.0%	Lancaster, Chelmsford
<i>Coquillettidia perturbans</i>	-22.41%	-21.69%	Lancaster, Hopkinton
<i>Culiseta melanura</i>	+35.14%	+247.6%	Westford, Tewksbury
<i>Ochlerotatus canadensis</i>	-85.19%	+1200%	Lancaster, Wilmington
<i>Culex</i> Species	+101.3%	-39.69%	Leominster, Westford
All Species	+29.81%	-27.52%	Leominster, Westford

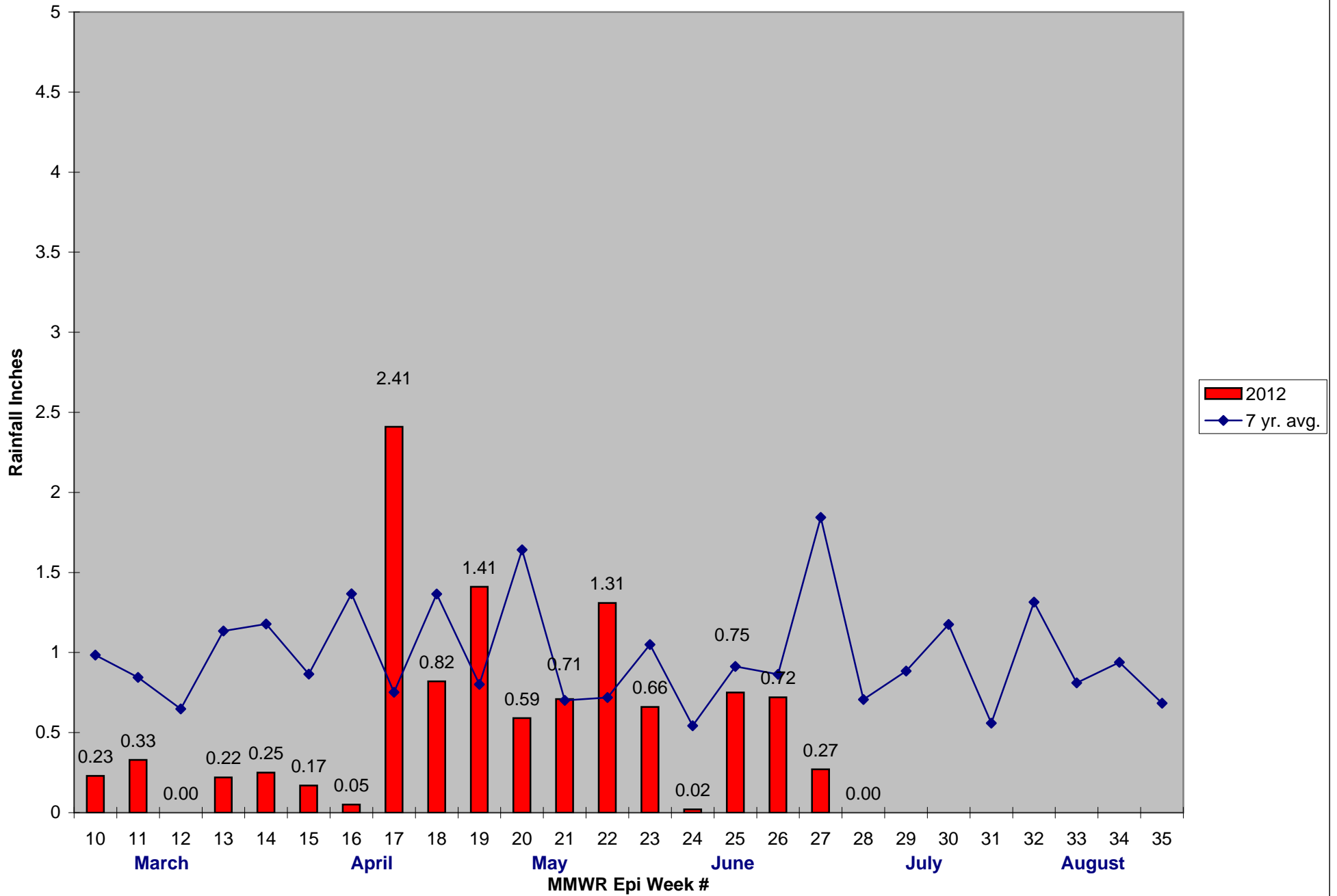
The predominant mosquito for the week was *Culex* Species,  
followed by *Coquillettidia perturbans*.

### 2012 Mass. Rainfall Data vs. 32 Year Average\*



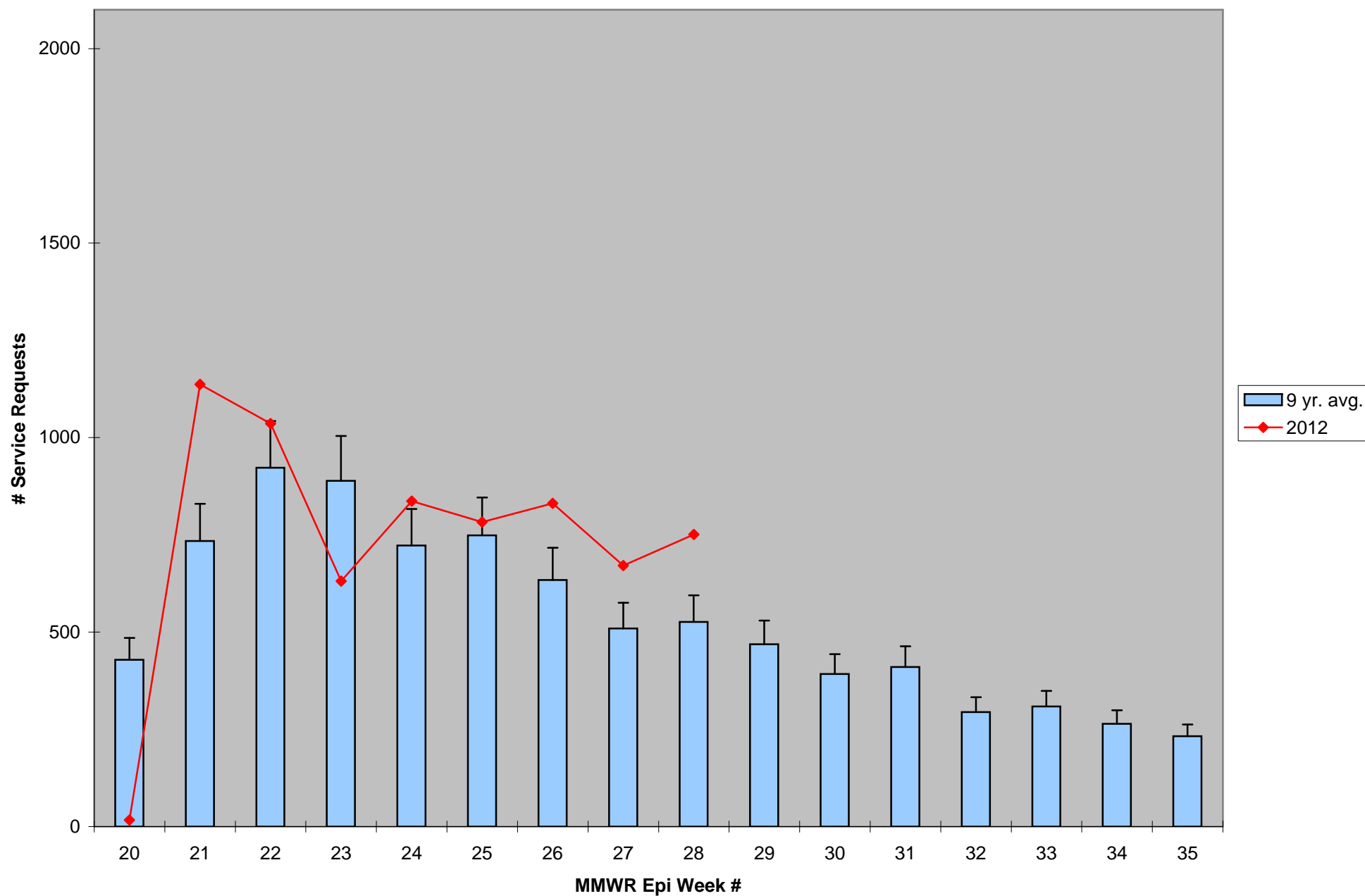
\*Source: Northeast Regional Climate Center: [http://www.nrcc.cornell.edu/page\\_summaries.html](http://www.nrcc.cornell.edu/page_summaries.html)

2012 CMMCP Weekly Rainfall vs. 7 Year Average\*



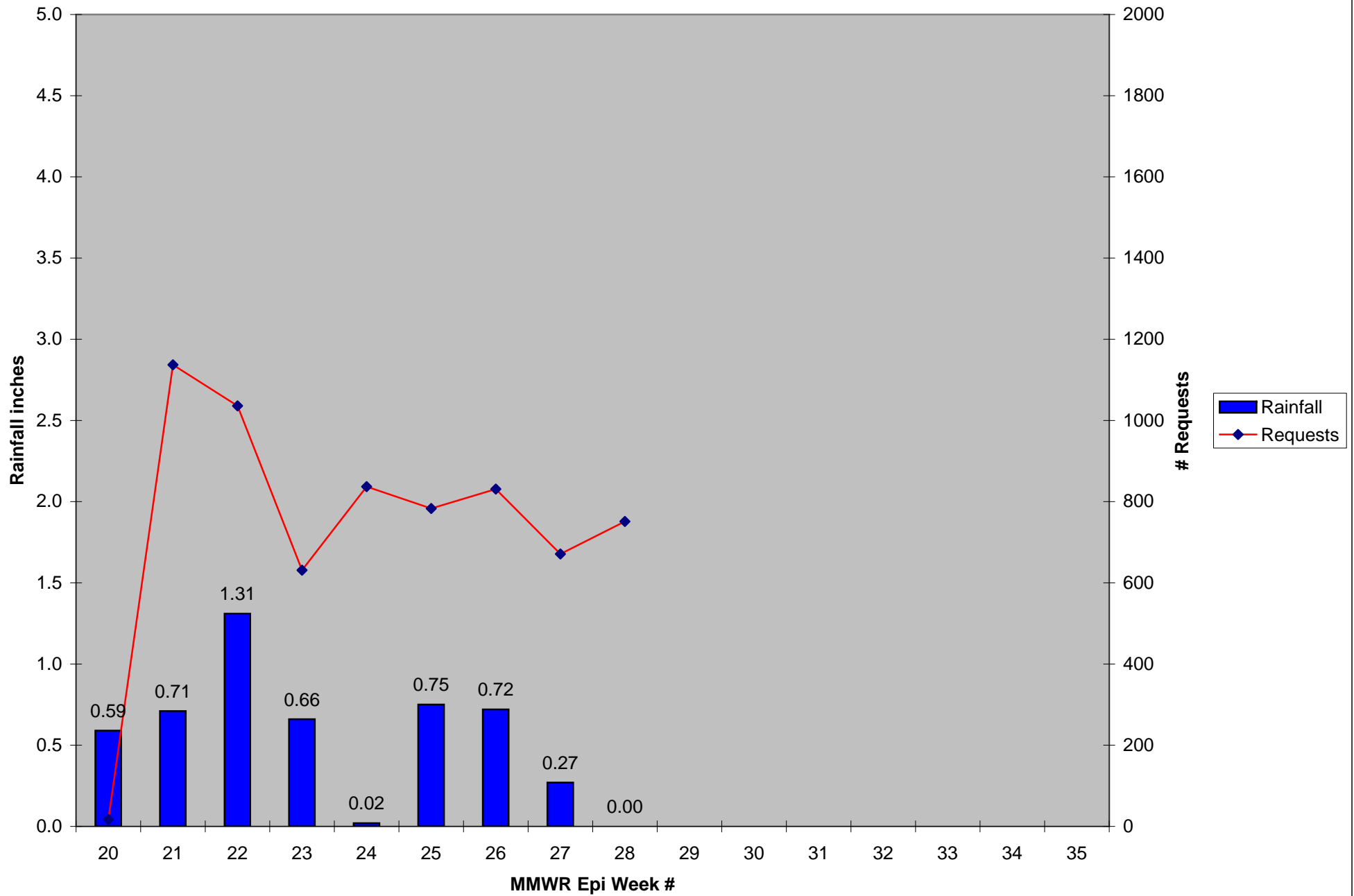
\*Source: CMMCP Weather Station - Northborough, MA

## ULV Service Request History Comparison 2003-2012



Error bars show approx. number of requests if we had 40 cities and towns over the 9 year average

2012 Rainfall vs. Requests



2012 Temp vs. Requests

