

CMMCP WEEKLY SURVEILLANCE REPORT



EPI week #28
July 7 - 13, 2013

Frank Cornine, *Field Biologist*
Curtis Best, *Staff Entomologist*
Juliana Miller, *Entomologist*
Tim McGlinchy, *Director of Operations*
Tim Deschamps, *Executive Director*

Central Mass. Mosquito Control Project
Weekly Report- 7/7/13-7/13/13
EPI Week #28

Cumulative Surveillance Summary

Target Species	<i>Ae. vex</i>	<i>Cq. per</i>	<i>Cs. mel</i>	<i>Oc. can</i>	<i>Culex</i>	All Species
No. Pools	53	114	89	61	254	996
Total Specimens	679	5565	794	684	3197	12286
No. Pools WNV +	0	0	0	0	0	0
No. Pools EEE +	0	0	0	0	0	0

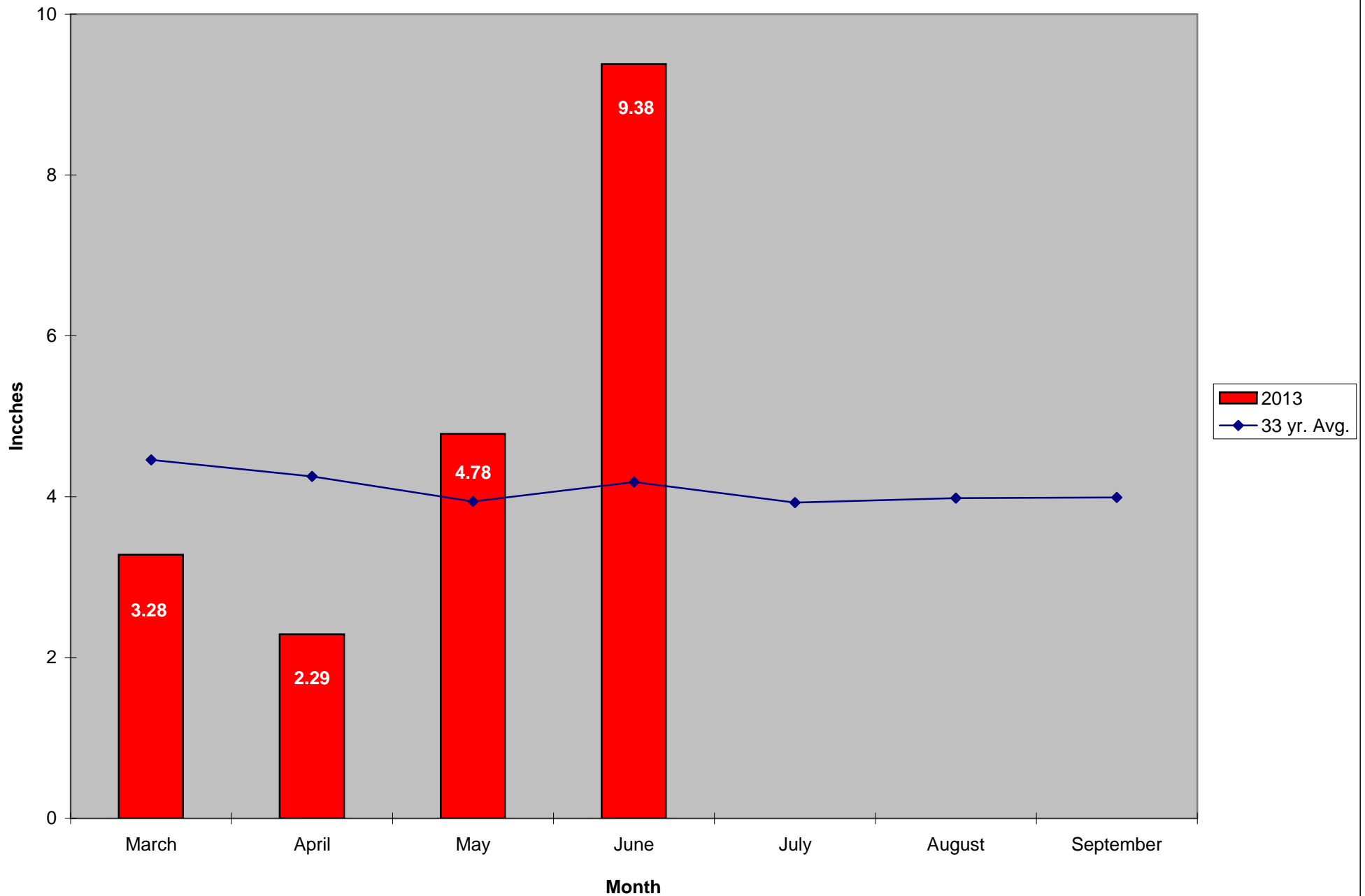
Weather Summary (Northborough, MA): The weather for this particular week averaged 74.27°F with a recorded high temperature of 91.9°F and a recorded low temperature of only 64.1°F. For this week there was also a total of 0.24 inches of rain observed. Compared to the previous week, it was approximately 4.57°F cooler on average, and rained about .19 inches more. There has been 0.29 inches of rain accumulated in July, while the total rainfall for the month of June was 8.49 inches. For the year we have received 32% more requests than average; 7,628 requests to date compared to the 10 year average of 5,785. Requests were 14.2% more than the 2012 totals for the same time frame, 6,677 in 2012 against 7,628 in 2013. Service requests remained constant (high) from EPI week 27 to Epi week 28 for 2013 (1,469 vs. 1,447).

CMMCP Mosquito Summary*-

Target Species	Δ From Last Week	Δ From Last Year	Predominant Trap Site(s)
<i>Aedes vexans</i>	+75.00%	+1300%	Chelmsford, Lancaster
<i>Coquillettidia perturbans</i>	+161.5%	+474.5%	Leominster, Tewksbury
<i>Culiseta melanura</i>	+269.2%	+128.6%	Tewksbury, Wilmington
<i>Ochlerotatus canadensis</i>	+44.44%	+2400%	Chelmsford, Billerica
<i>Culex</i> Species	+94.20%	-34.79%	Webster, Chelmsford
All Species	+107.6%	+106.4%	Chelmsford, Tewksbury, Leominster

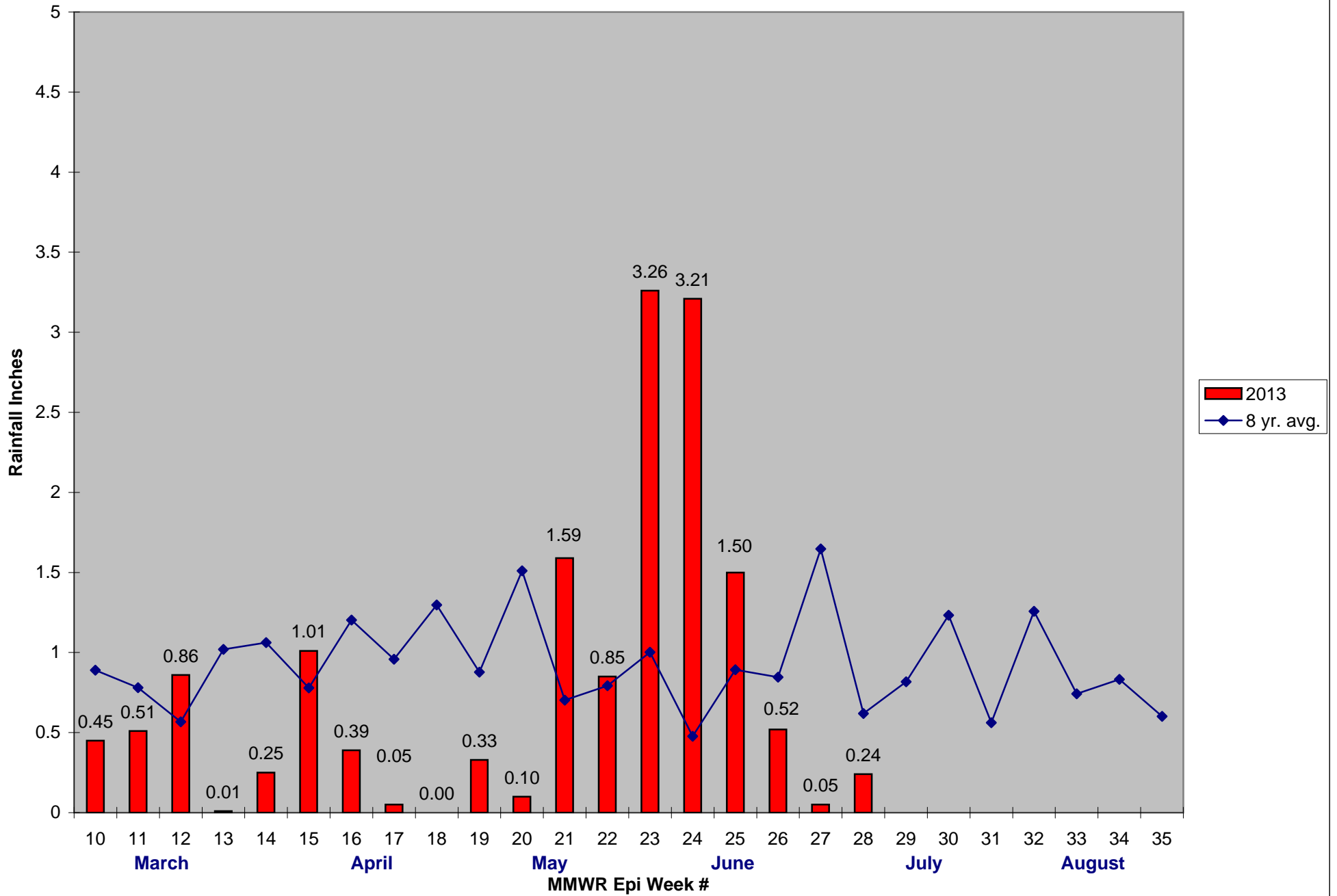
The predominant mosquito for the week was *Coquillettidia perturbans*, followed by *Culex* Species.

2013 Mass. Rainfall Data vs. 33 Year Average*



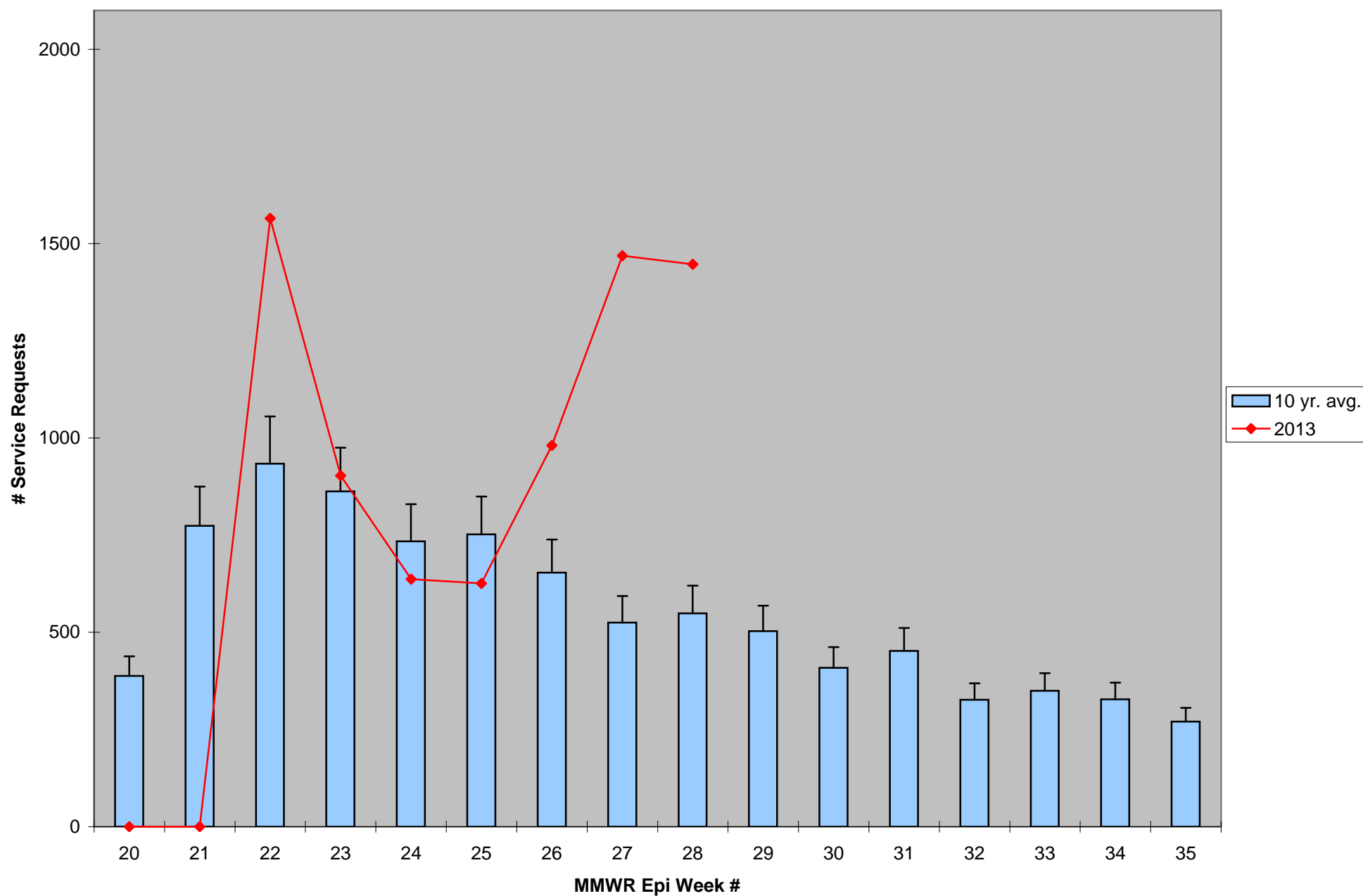
*Source: Northeast Regional Climate Center: http://www.nrcc.cornell.edu/page_summaries.html

2013 CMMCP Weekly Rainfall vs. 8 Year Average*



*Source: CMMCP Weather Station - Northborough, MA

ULV Service Request History Comparison 2003-2013



Error bars show approx. number of requests if we had 40 cities and towns over the 10 year average

2013 Rainfall vs. Requests

