

CMMCP WEEKLY SURVEILLANCE REPORT



EPI week #29
July 17 – 23, 2011

Frank Cornine, *Field Biologist*
Curtis Best, *Staff Entomologist*
Tim McGlinchy, *Director of Operations*
Tim Deschamps, *Executive Director*

Central Mass. Mosquito Control Project
Weekly Report- 7/17/11-7/23/11
EPI Week #29

Cumulative Surveillance Summary

Target Species	<i>Ae. vex</i>	<i>Cq. per</i>	<i>Cs. mel</i>	<i>Oc. can</i>	<i>Culex</i>	All Species
No. Pools	6	113	63	41	462	1069
Total Specimens	10	2899	356	299	13797	18712
No. Pools WNV +	0	0	0	0	0	0
No. Pools EEE +	0	0	0	0	0	0

Weather Summary (Northborough, MA): The weather for this particular week averaged 79.36°F with a recorded high temperature of 100.8°F and a recorded low temperature of only 60.1°F. For this week there was also a total of only 0.02 inches of rain observed. Compared to the previous week, it was approximately 4.90°F warmer on average, and rained the same amount. There has been 1.11 inches of rain accumulated in July, while the total rainfall for the month of June was 5.26 inches. For the year we have received 58% more requests than average; 9,787 requests to date compared to the 8 year average of 6,183. Requests were 23% more than the 2010 totals; 9,787 in 2011 against 7,912 in 2010. Service requests **decreased** 20% from EPI week 28 to Epi week 29 for 2011.

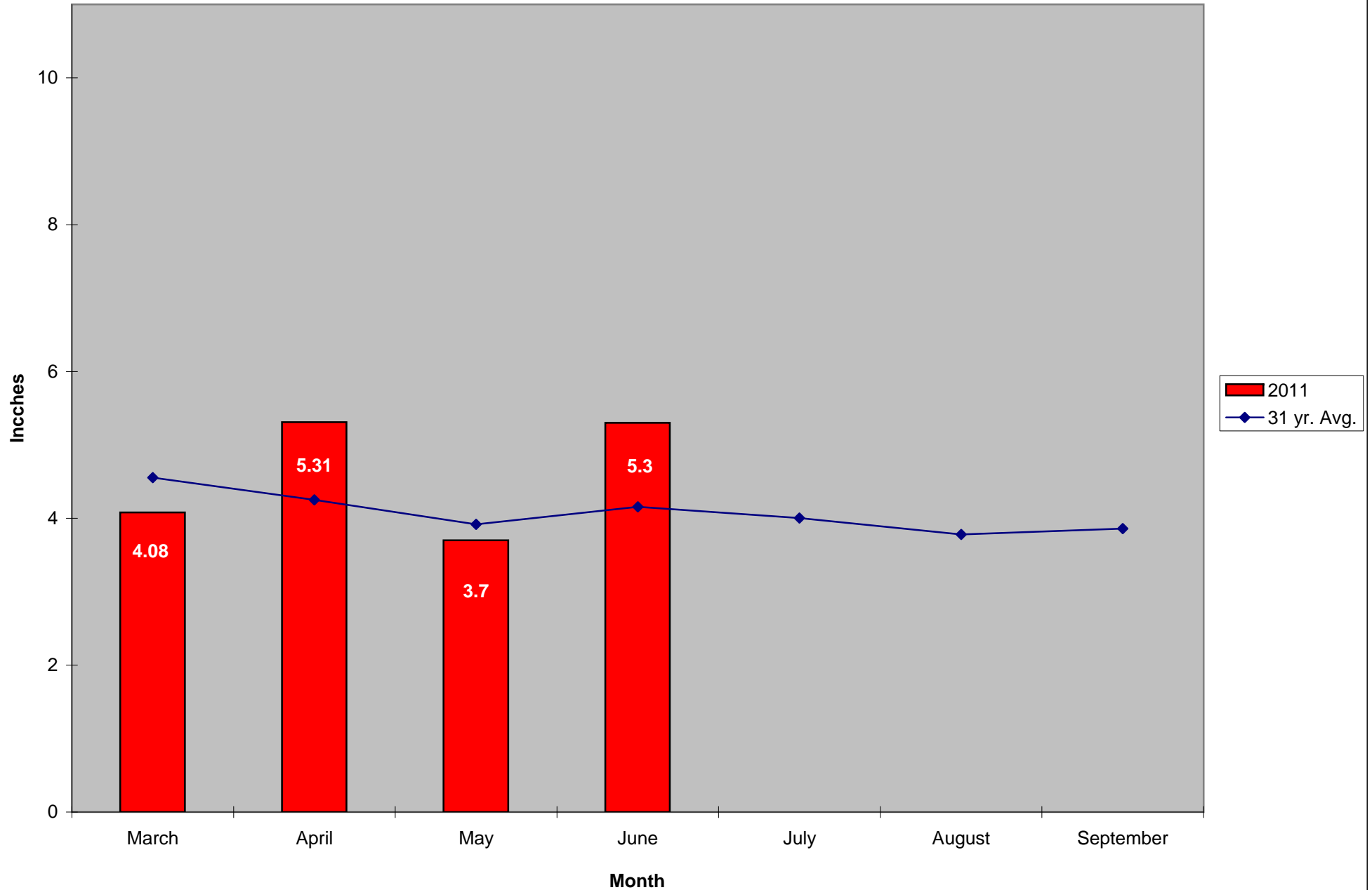
CMMCP Mosquito Summary-

Target Species	Δ From Last Week	Δ From Last Year	Predominant Trap Site(s)
----------------	---------------------	---------------------	--------------------------

<i>Aedes vexans</i>	-100.0%	0.000%	N/A
<i>Coquillettidia perturbans</i>	-17.59%	+2.560%	Natick
<i>Culiseta melanura</i>	+214.3%	+560.0%	Westborough, Hopkinton
<i>Ochlerotatus canadensis</i>	+700.0%	+600.0%	Sherborn, Stow
<i>Culex</i> Species	-3.990%	+163.4%	Southborough, Acton
All Species	-5.910%	+79.64%	Southborough, Natick

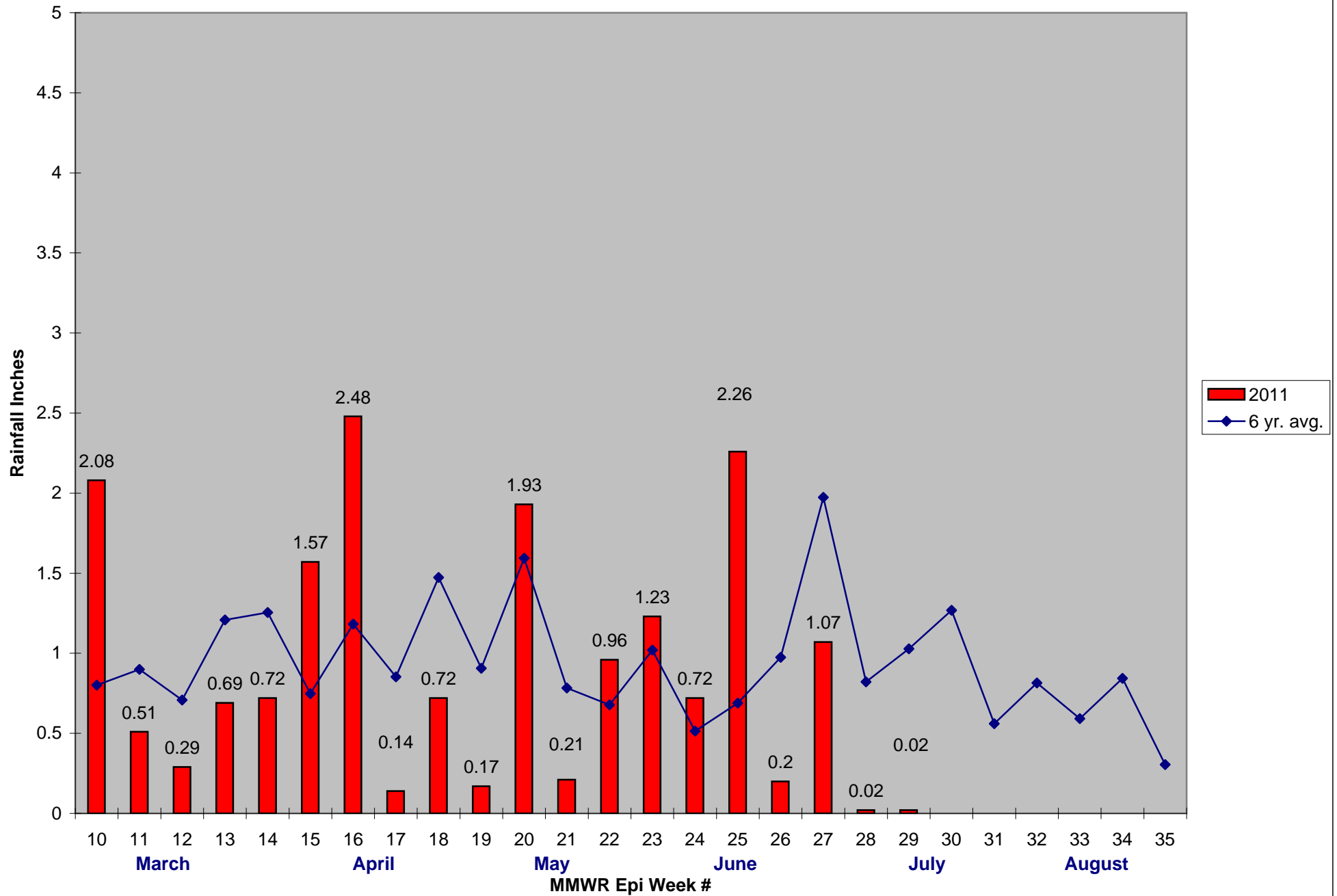
The predominant mosquito for the week was *Culex* spp.
followed by *Coquillettidia perturbans*.

2011 Mass. Rainfall Data vs. 31 Year Average*



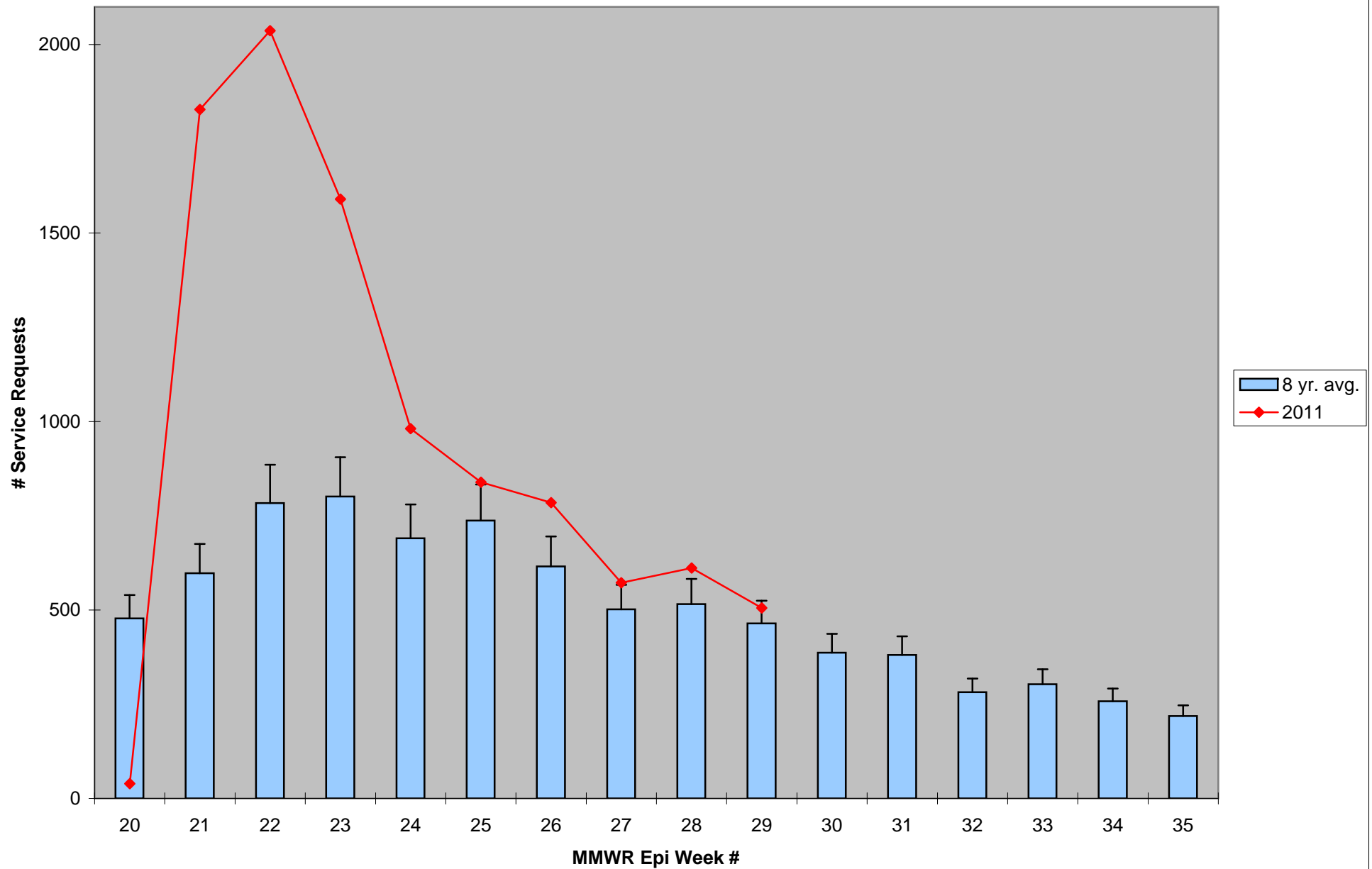
*Source: Northeast Regional Climate Center: http://www.nrcc.cornell.edu/page_summaries.html

2011 CMMCP Weekly Rainfall vs. 6 Year Average*



*Source: CMMCP Weather Station - Northborough, MA

ULV Service Request History Comparison 2003-2011



Error bars show approx. number of requests if we had 38 cities and towns over the 7 year average

2011 Rainfall vs. Requests

