

# CMMCP WEEKLY SURVEILLANCE REPORT



**EPI week #29**  
**Jul. 15 – 21, 2012**

**Frank Cornine**, *Field Biologist*  
**Curtis Best**, *Staff Entomologist*  
**Juliana Miller**, *Entomologist*  
**Tim McGlinchy**, *Director of Operations*  
**Tim Deschamps**, *Executive Director*

**Central Mass. Mosquito Control Project**  
**Weekly Report- 7/15/12-7/21/12**  
**EPI Week #29**

**Cumulative Surveillance Summary**

Target Species	<i>Ae. vex</i>	<i>Cq. per</i>	<i>Cs. mel</i>	<i>Oc. can</i>	<i>Culex</i>	All Species
<b>No. Pools</b>	22	142	133	65	438	1244
<b>Total Specimens</b>	39	4273	1345	287	9468	16926
<b>No. Pools WNV +</b>	0	0	0	0	0	0
<b>No. Pools EEE +</b>	0	0	0	0	0	0

**Weather Summary (Northborough, MA):** The weather for this particular week averaged 75.83°F with a recorded high temperature of 94.9°F and a recorded low temperature of only 51.3°F. For this week there was also a total of 0.35 inches of rain observed. Compared to the previous week, it was approximately 0.82°F warmer on average, and rained about 0.35 inches more. There has been 0.62 inches of rain accumulated in July, while the total rainfall for the month of June was 2.98 inches at the CMMCP weather station (3.86 statewide). For the year we have received 22% more requests than average; 7,490 requests to date compared to the 9 year average of 6,155. Requests were 30% less than the 2011 totals for the same time frame, 9,748 in 2011 against 7,490 in 2012. Service requests increased 8% from EPI week 28 to Epi week 29 for 2012 (751 vs. 813) likely due to media attention on EEE in Southeastern Mass.

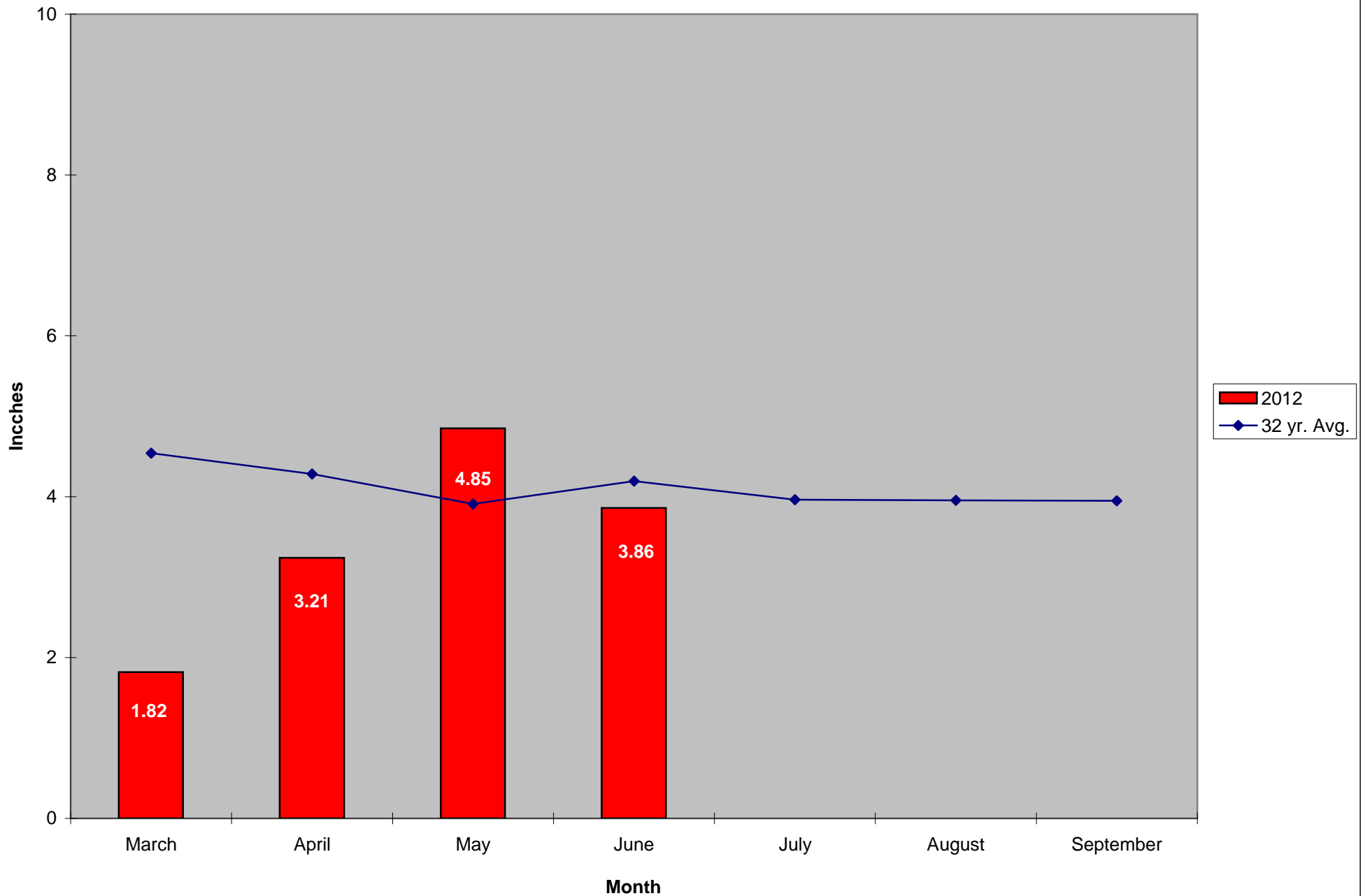
**CMMCP Mosquito Summary-**

Target Species	Δ From Last Week	Δ From Last Year	Predominant Trap Site(s)
----------------	---------------------	---------------------	--------------------------

<i>Aedes vexans</i>	-75.00%	+200.0%	Auburn
<i>Coquillettidia perturbans</i>	+55.57%	+47.82%	Hopkinton, Boylston
<i>Culiseta melanura</i>	-60.27%	-56.06%	Stow, Westborough
<i>Ochlerotatus canadensis</i>	-69.23%	-42.86%	Ashland, Stow
<i>Culex</i> Species	+53.23%	-3.740%	Shrewsbury, Marlborough
All Species	+43.90%	+10.85%	Shrewsbury, Hopkinton

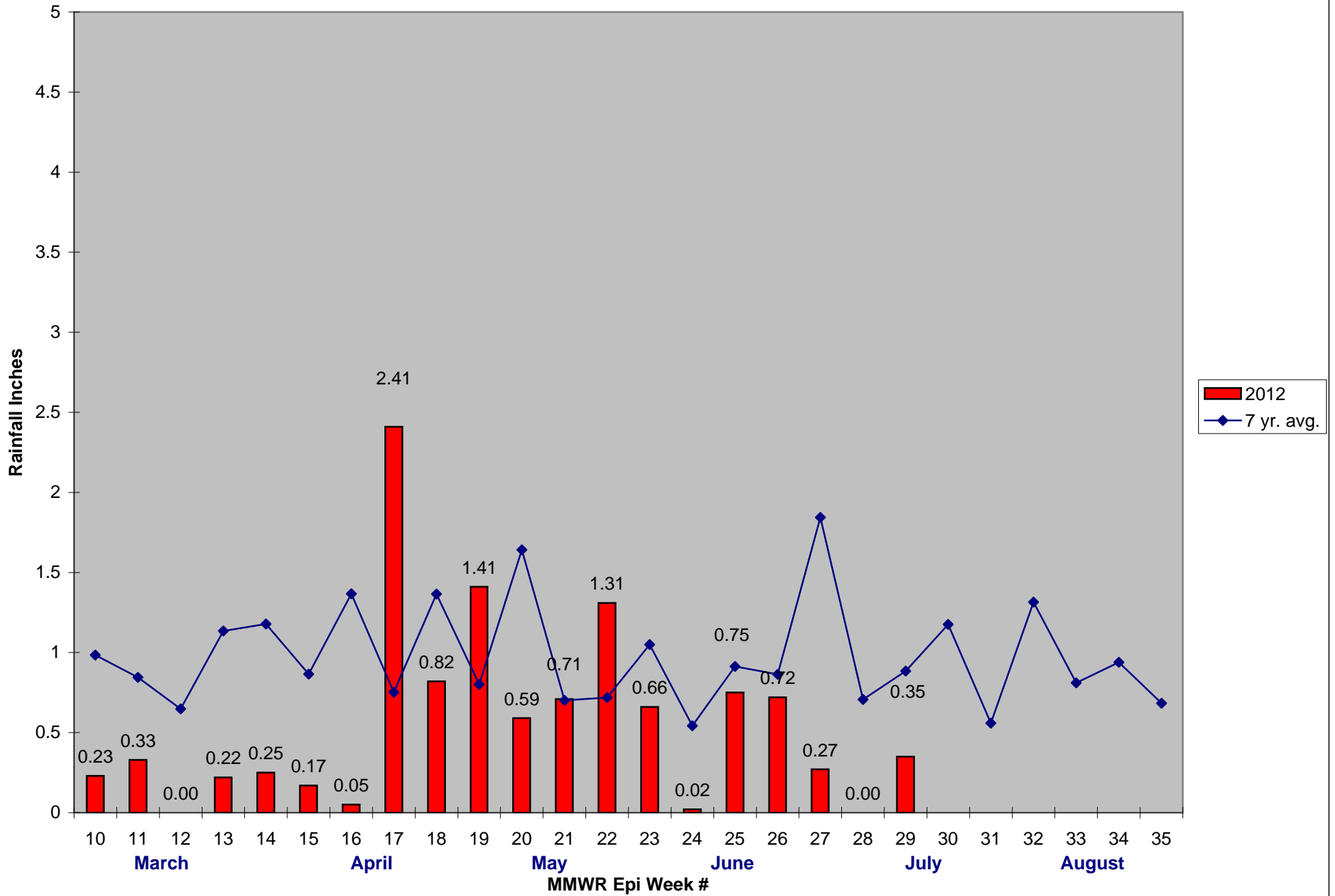
The predominant mosquito for the week was *Culex* Species,  
followed by *Coquillettidia perturbans*.

### 2012 Mass. Rainfall Data vs. 32 Year Average\*



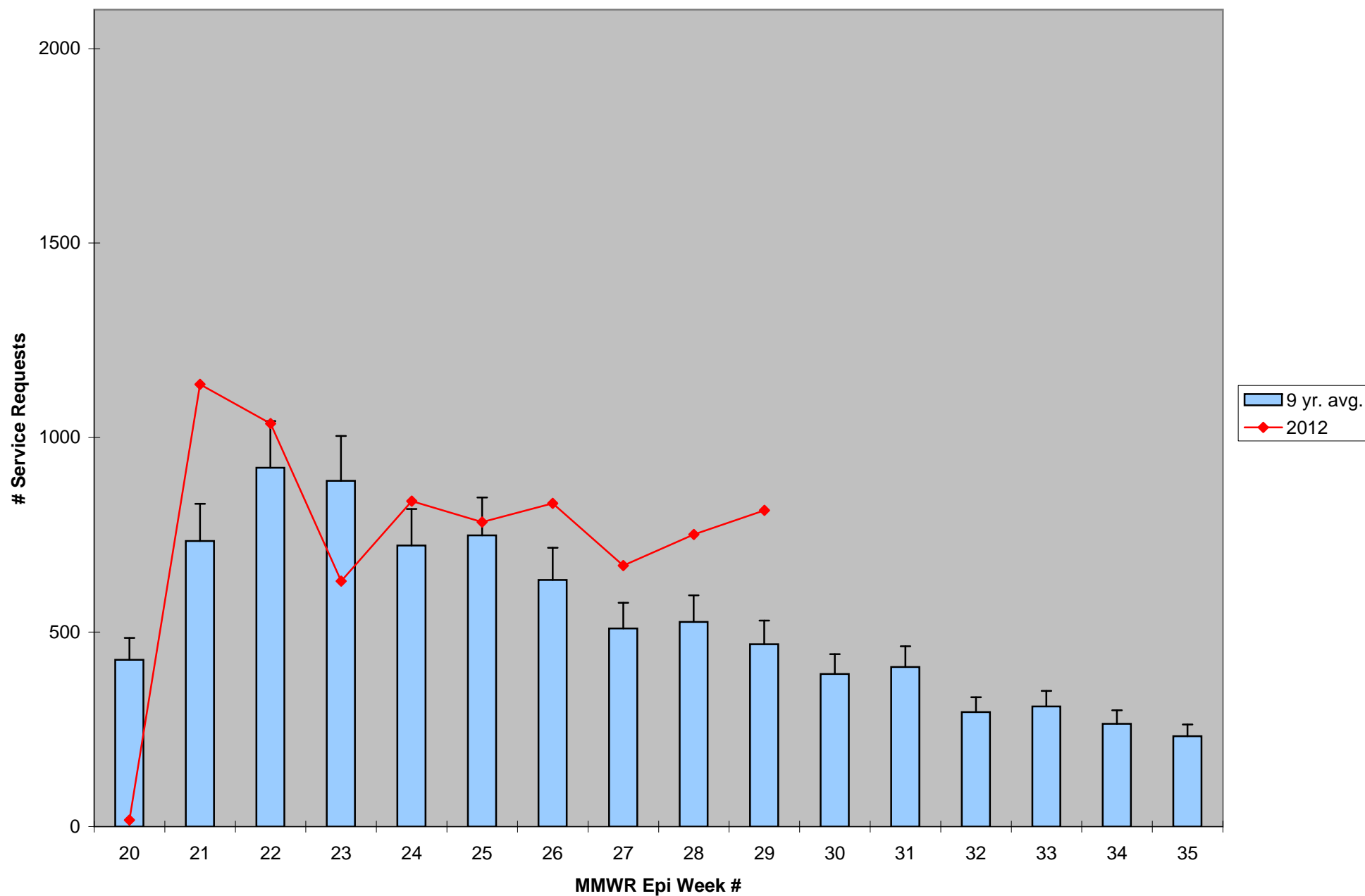
\*Source: Northeast Regional Climate Center: [http://www.nrcc.cornell.edu/page\\_summaries.html](http://www.nrcc.cornell.edu/page_summaries.html)

### 2012 CMMCP Weekly Rainfall vs. 7 Year Average\*



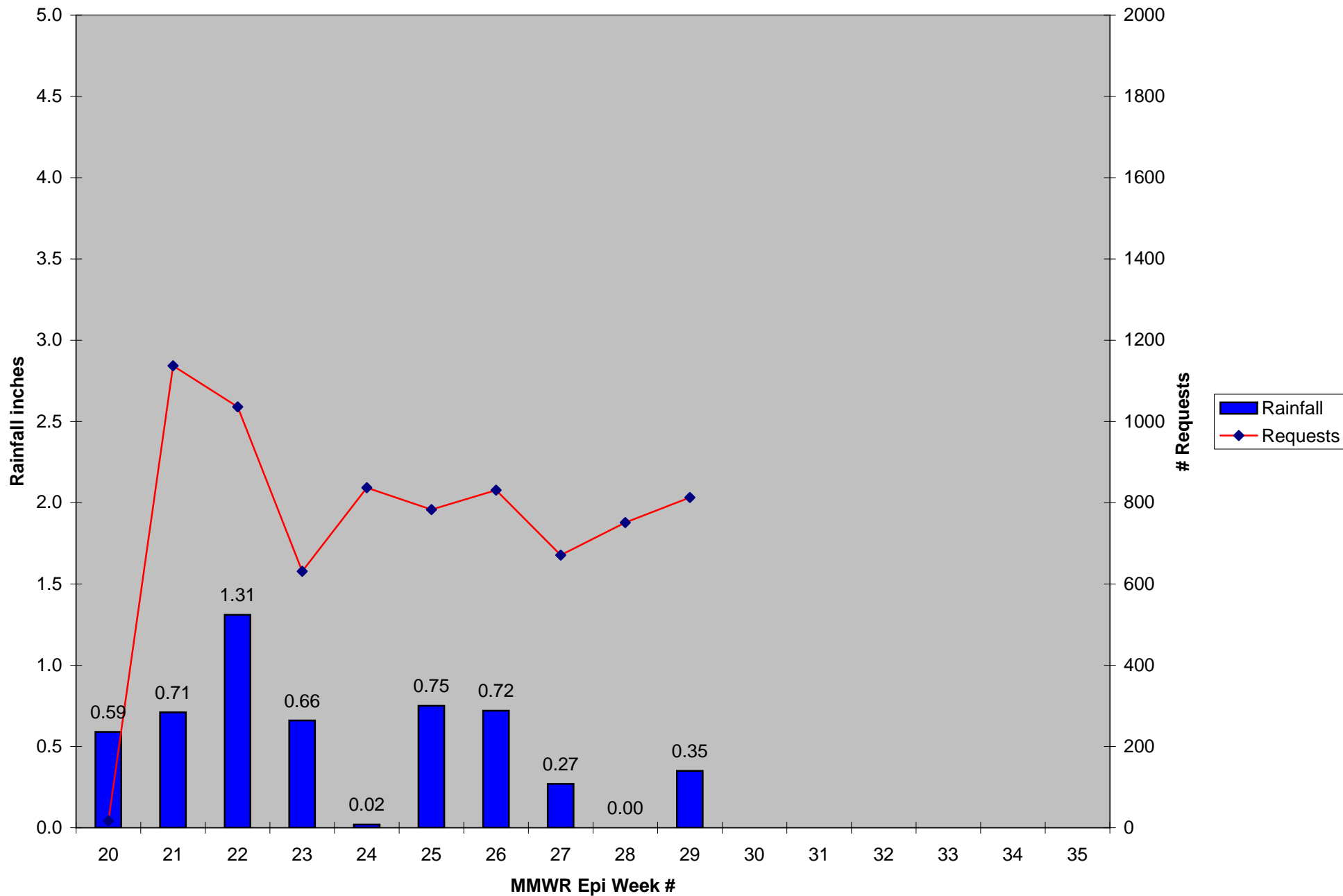
\*Source: CMMCP Weather Station - Northborough, MA

## ULV Service Request History Comparison 2003-2012



Error bars show approx. number of requests if we had 40 cities and towns over the 9 year average

2012 Rainfall vs. Requests



2012 Temp vs. Requests

