

# CMMCP WEEKLY SURVEILLANCE REPORT



**EPI week #29**  
**July 14 - 20, 2013**

**Frank Cornine**, *Field Biologist*  
**Curtis Best**, *Staff Entomologist*  
**Juliana Miller**, *Entomologist*  
**Tim McGlinchy**, *Director of Operations*  
**Tim Deschamps**, *Executive Director*

**Central Mass. Mosquito Control Project**  
**Weekly Report- 7/14/13-7/20/13**  
**EPI Week #29**

**Cumulative Surveillance Summary**

<b>Target Species</b>	<b><i>Ae. vex</i></b>	<b><i>Cq. per</i></b>	<b><i>Cs. mel</i></b>	<b><i>Oc. can</i></b>	<b><i>Culex</i></b>	<b>All Species</b>
<b>No. Pools</b>	60	130	103	74	324	1222
<b>Total Specimens</b>	712	6640	817	811	3835	14500
<b>No. Pools WNV +</b>	0	0	0	0	0	0
<b>No. Pools EEE +</b>	0	0	0	0	0	0

**Weather Summary (Northborough, MA):** The weather for this particular week averaged 82.71°F with a recorded high temperature of 96.6°F and a recorded low temperature of only 67.7°F. For this week there was also a total of 0.08 inches of rain observed. Compared to the previous week, it was approximately 8.44°F warmer on average, and rained about 0.16 inches less. There has been 0.37 inches of rain accumulated in July, while the total rainfall for the month of June was 8.49 inches. For the year we have received 40% more requests than average; 8,785 requests to date compared to the 10 year average of 6,288. Requests were 17.2% more than the 2012 totals for the same time frame, 7,490 in 2012 against 8,785 in 2013. Service requests dropped 25% from EPI week 28 to Epi week 29 in 2013 (1,447 vs. 1,157).

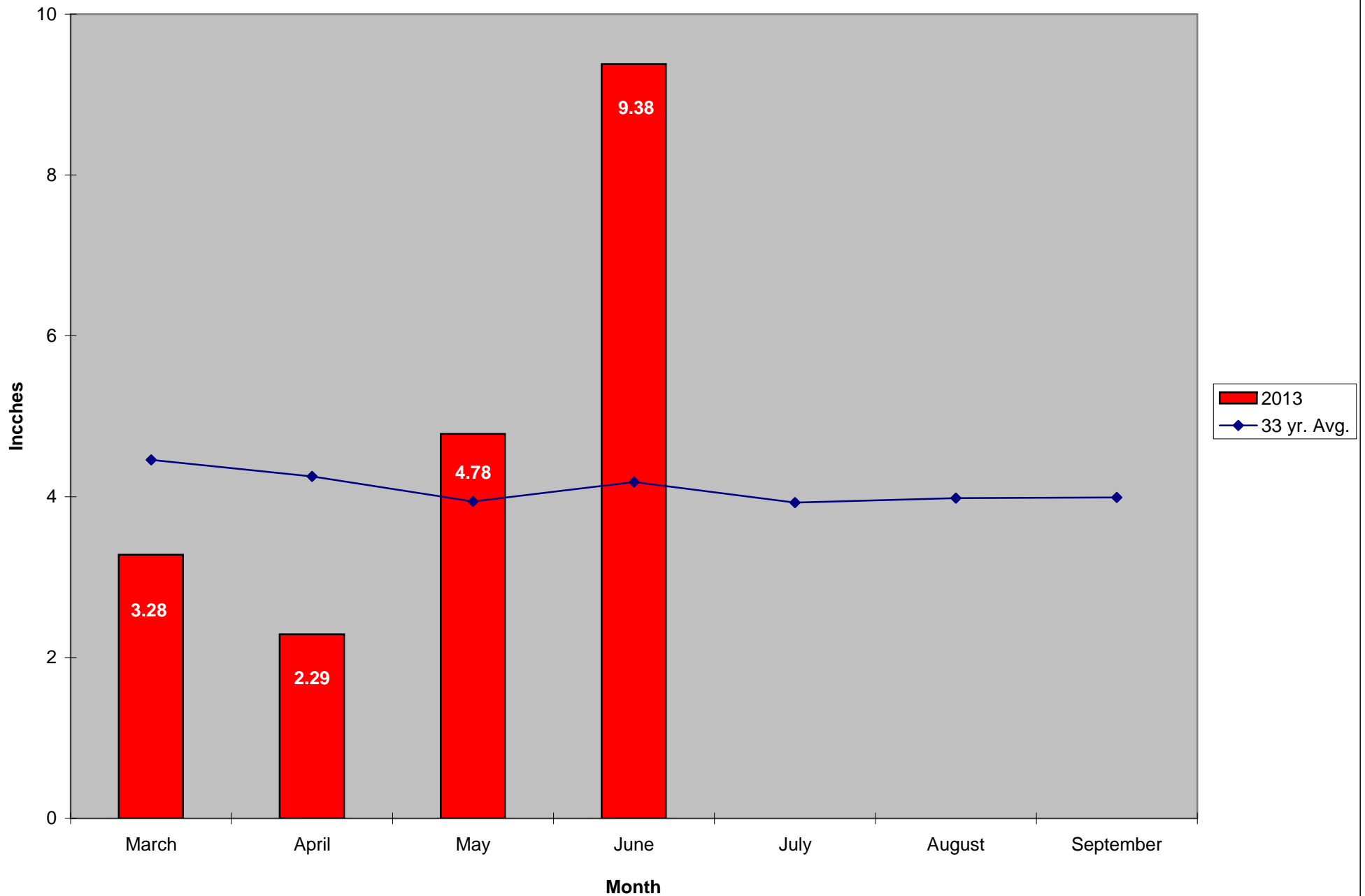
**CMMCP Mosquito Summary\*-**

**Target Species                      Δ From                      Δ From                      Predominant Trap Site(s)**

	<b>Last Week</b>	<b>Last Year</b>	
<i>Aedes vexans</i>	-50.00%	+700.0%	Westford, Shrewsbury
<i>Coquillettidia perturbans</i>	-18.85%	+74.70%	Shrewsbury
<i>Culiseta melanura</i>	-79.17%	-16.67%	Milford, Shrewsbury
<i>Ochlerotatus canadensis</i>	+12.00%	+1300%	Hudson, Westford
<i>Culex</i> Species	-75.00%	-88.61%	Holliston, Lowell
All Species	-32.04%	-14.56%	Shrewsbury

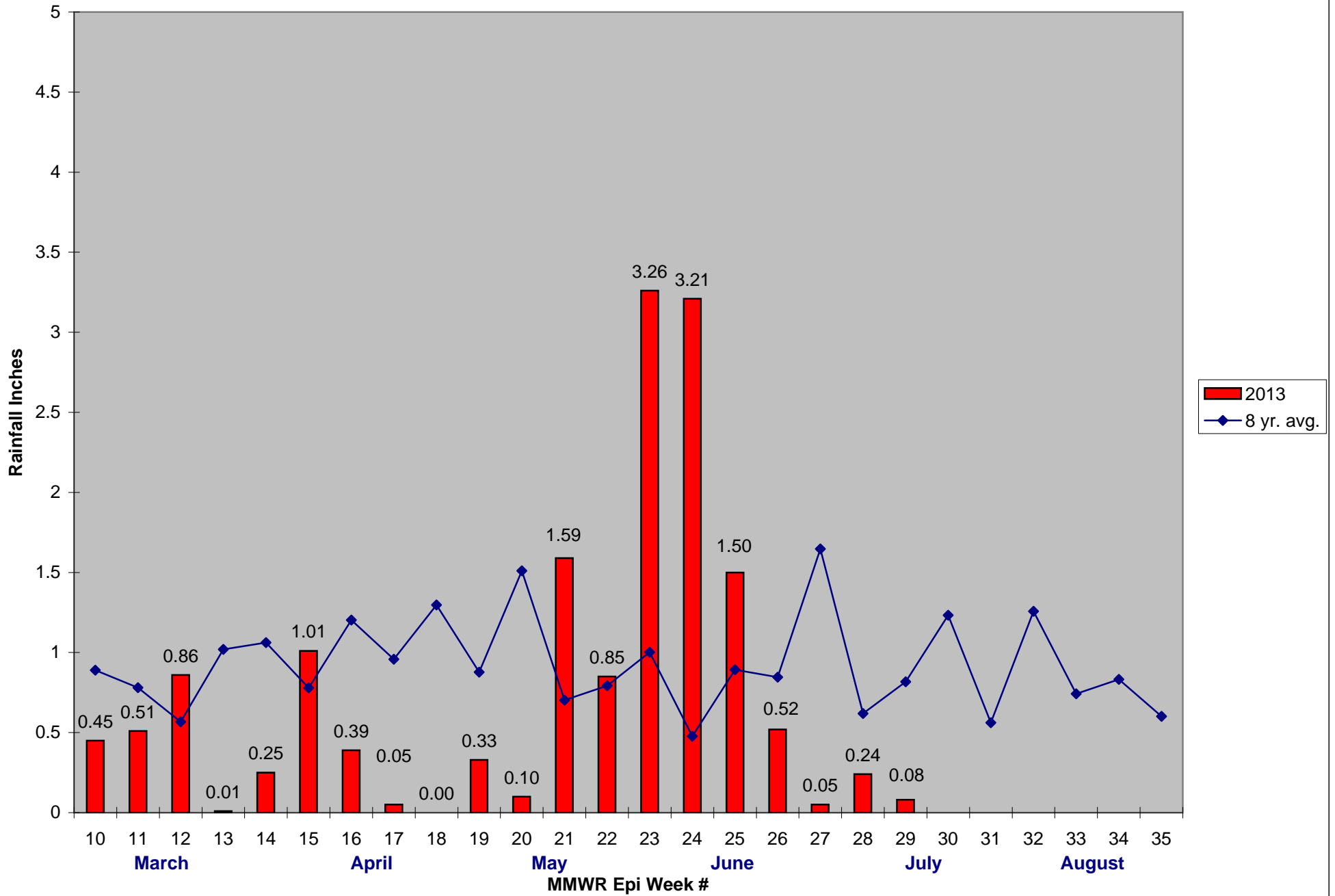
The predominant mosquito for the week was *Coquillettidia perturbans*, followed by *Culex* Species.

**2013 Mass. Rainfall Data vs. 33 Year Average\***



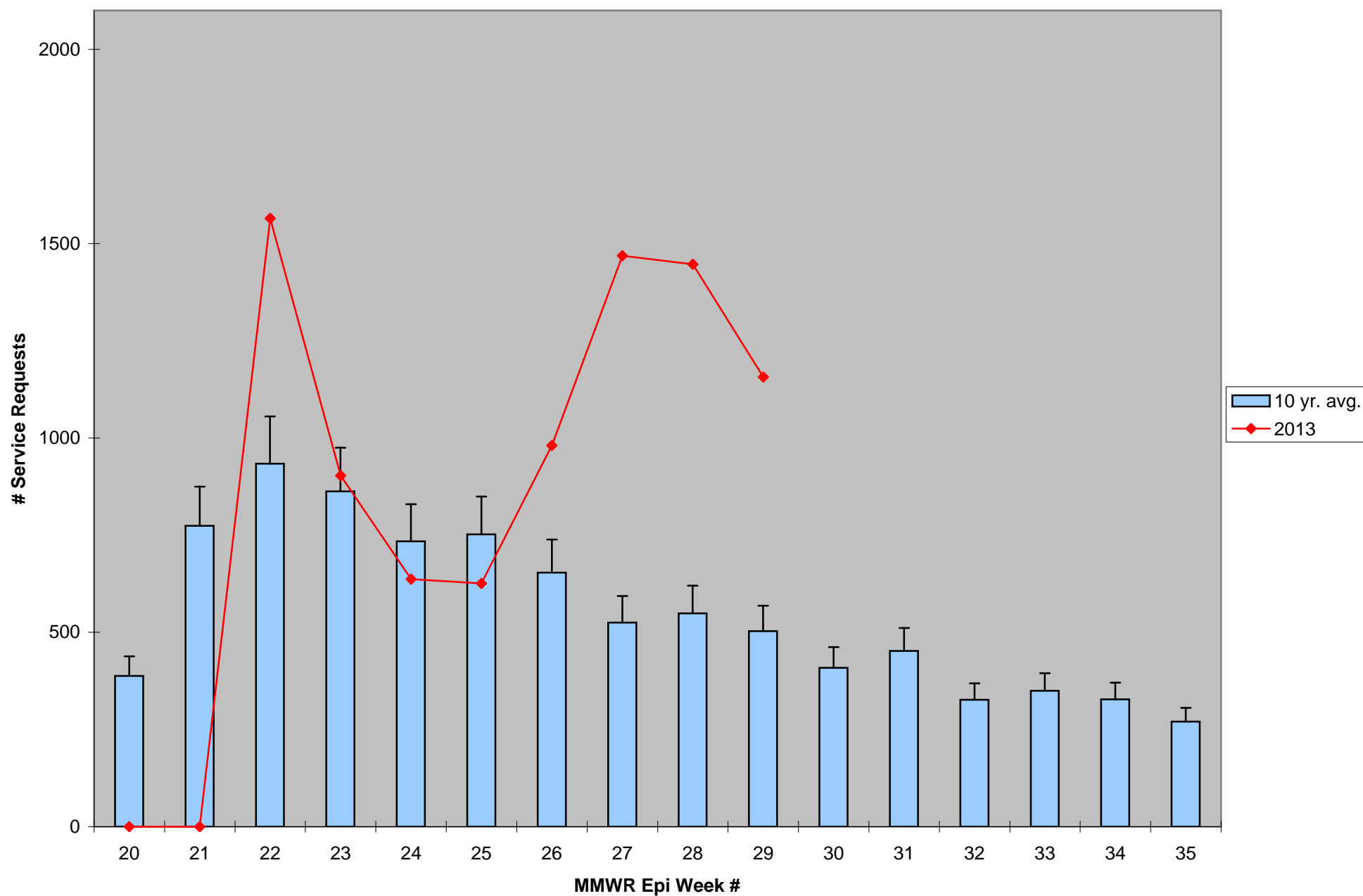
\*Source: Northeast Regional Climate Center: [http://www.nrcc.cornell.edu/page\\_summaries.html](http://www.nrcc.cornell.edu/page_summaries.html)

### 2013 CMMCP Weekly Rainfall vs. 8 Year Average\*



\*Source: CMMCP Weather Station - Northborough, MA

### ULV Service Request History Comparison 2003-2013



Error bars show approx. number of requests if we had 40 cities and towns over the 10 year average

2013 Rainfall vs. Requests

