

CMMCP WEEKLY SURVEILLANCE REPORT



EPI week #30
July 24 – 30, 2011

Frank Cornine, *Field Biologist*
Curtis Best, *Staff Entomologist*
Tim McGlinchy, *Director of Operations*
Tim Deschamps, *Executive Director*

Central Mass. Mosquito Control Project
Weekly Report- 7/24/11-7/30/11
EPI Week #30

Cumulative Surveillance Summary

Target Species	<i>Ae. vex</i>	<i>Cq. per</i>	<i>Cs. mel</i>	<i>Oc. can</i>	<i>Culex</i>	All Species
No. Pools	11	144	76	48	538	1283
Total Specimens	22	4174	487	326	15913	22717
No. Pools WNV +	0	0	0	0	1	1
No. Pools EEE +	0	0	0	0	0	0

Pool of WNV+ *Culex* Species collected in Sturbridge on 7/22/11

Weather Summary (Northborough, MA): The weather for this particular week averaged 71.97°F with a recorded high temperature of 87.8°F and a recorded low temperature of only 58.6°F. For this week there was also a total of 0.62 inches of rain observed. Compared to the previous week, it was approximately 7.39°F cooler on average, and rained about 0.60 inches more. There has been 1.73 inches of rain accumulated in July, while the total rainfall for the month of June was 5.26 inches. For the year we have received 56% more requests than average; 10,284 requests to date compared to the 8 year average of 6,570. Requests were 23% more than the 2010 totals, 10,284 in 2011 against 8,351 in 2010. Service requests **decreased <1%** from EPI week 29 to Epi week 30 for 2011 (497 vs. 505).

CMMCP Mosquito Summary-

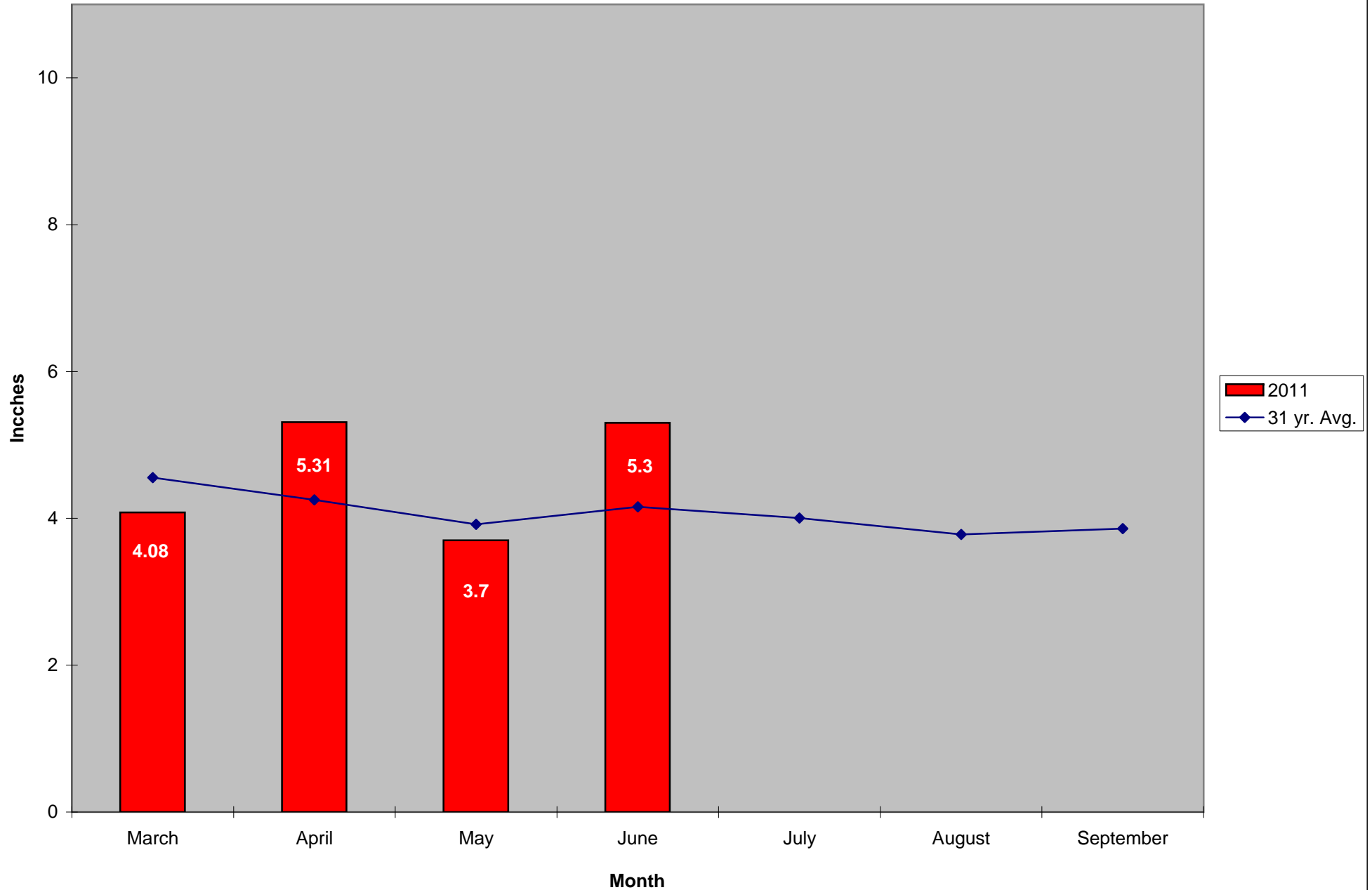
Target Species	Δ From Last Week	Δ From Last Year*	Predominant Trap Site(s)
----------------	---------------------	----------------------	--------------------------

<i>Aedes vexans</i>	+100.0%	-66.67%	Fitchburg
<i>Coquillettidia perturbans</i>	+25.39%	+269.3%	Sturbridge, Millbury
<i>Culiseta melanura</i>	+98.48%	+ ∞	Millbury
<i>Ochlerotatus canadensis</i>	+14.29%	+700.0%	Westford
<i>Culex</i> Species	-48.08%	+430.1%	Auburn, Dracut
All Species	-20.36%	+288.2%	Auburn, Sturbridge, Dracut

The predominant mosquito for the week was *Culex* spp.
followed by *Coquillettidia perturbans*.

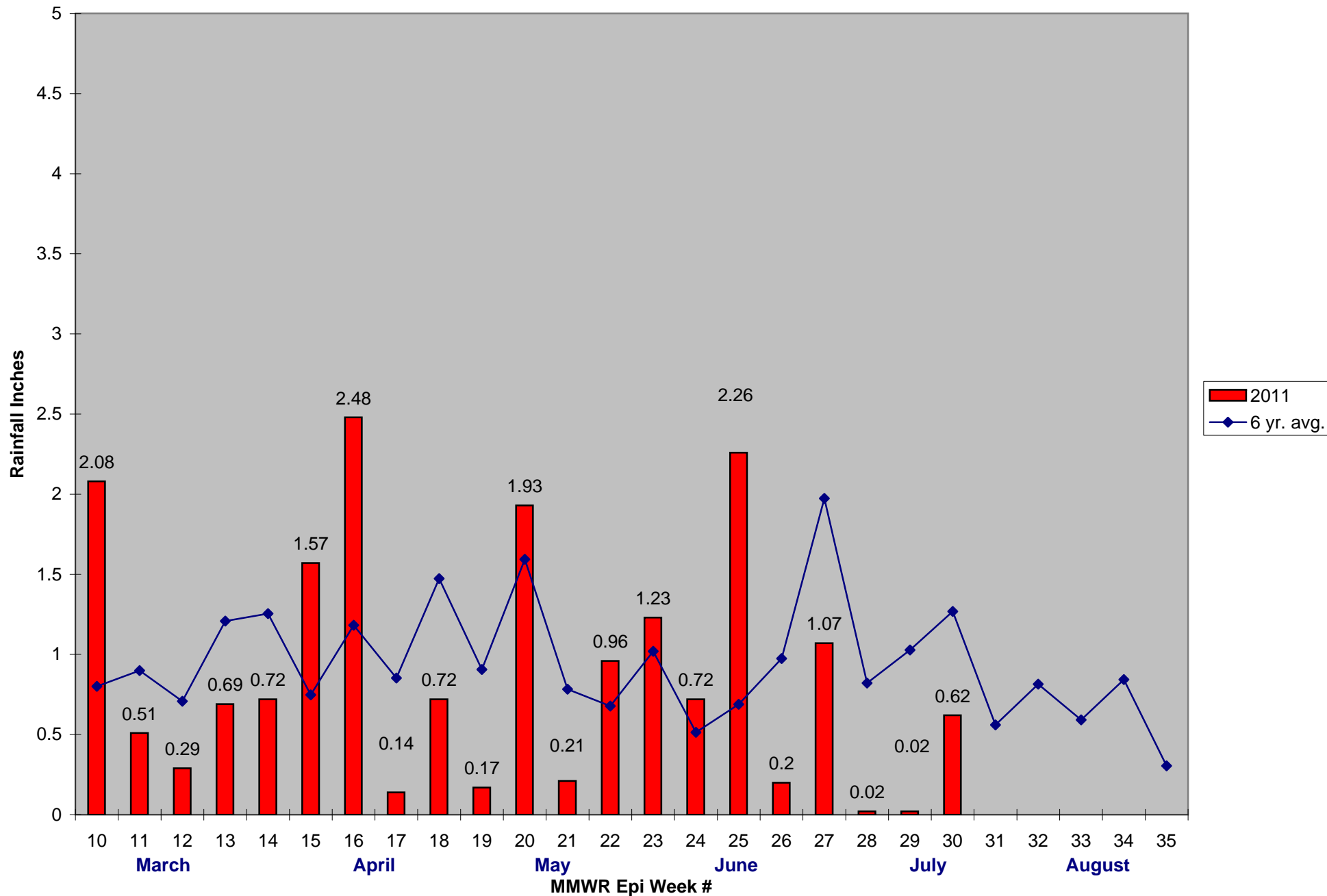
*Low 2010 season numbers may contribute to these comparisons being not as significant as they appear

2011 Mass. Rainfall Data vs. 31 Year Average*



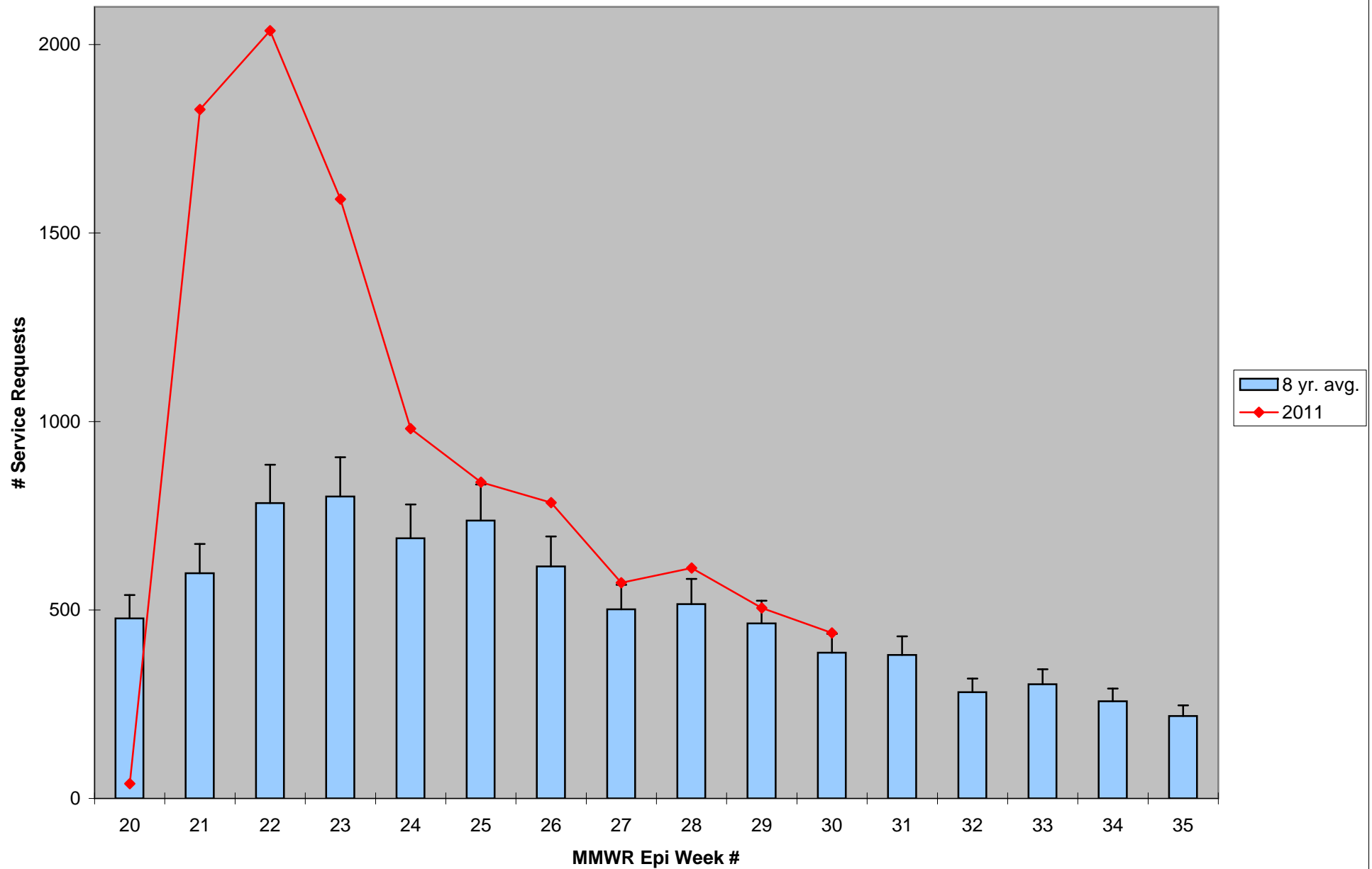
*Source: Northeast Regional Climate Center: http://www.nrcc.cornell.edu/page_summaries.html

2011 CMMCP Weekly Rainfall vs. 6 Year Average*



*Source: CMMCP Weather Station - Northborough, MA

ULV Service Request History Comparison 2003-2011



Error bars show approx. number of requests if we had 39 cities and towns over the 8 year average

2011 Rainfall vs. Requests

