

CMMCP WEEKLY SURVEILLANCE REPORT



EPI week #30
Jul. 22 – 28, 2012

Frank Cornine, *Field Biologist*
Curtis Best, *Staff Entomologist*
Juliana Miller, *Entomologist*
Tim McGlinchy, *Director of Operations*
Tim Deschamps, *Executive Director*

Central Mass. Mosquito Control Project
Weekly Report- 7/22/12-7/28/12
EPI Week #30

Cumulative Surveillance Summary

Target Species	<i>Ae. vex</i>	<i>Cq. per</i>	<i>Cs. mel</i>	<i>Oc. can</i>	<i>Culex</i>	All Species
No. Pools	22	169	148	68	511	1435
Total Specimens	39	5307	1395	307	12054	21001
No. Pools WNV +	0	0	0	0	2 [†]	2 [†]
No. Pools EEE +	0	0	0	0	1 [†]	1 [†]

[†]Pool of EEE+ *Culex* Species collected in Westborough on 7/17/12

[†]Pool of WNV+ *Culex* Species collected in Shrewsbury on 7/18/12

[†]Pool of WNV+ *Culex* Species collected in Tewksbury on 7/20/12

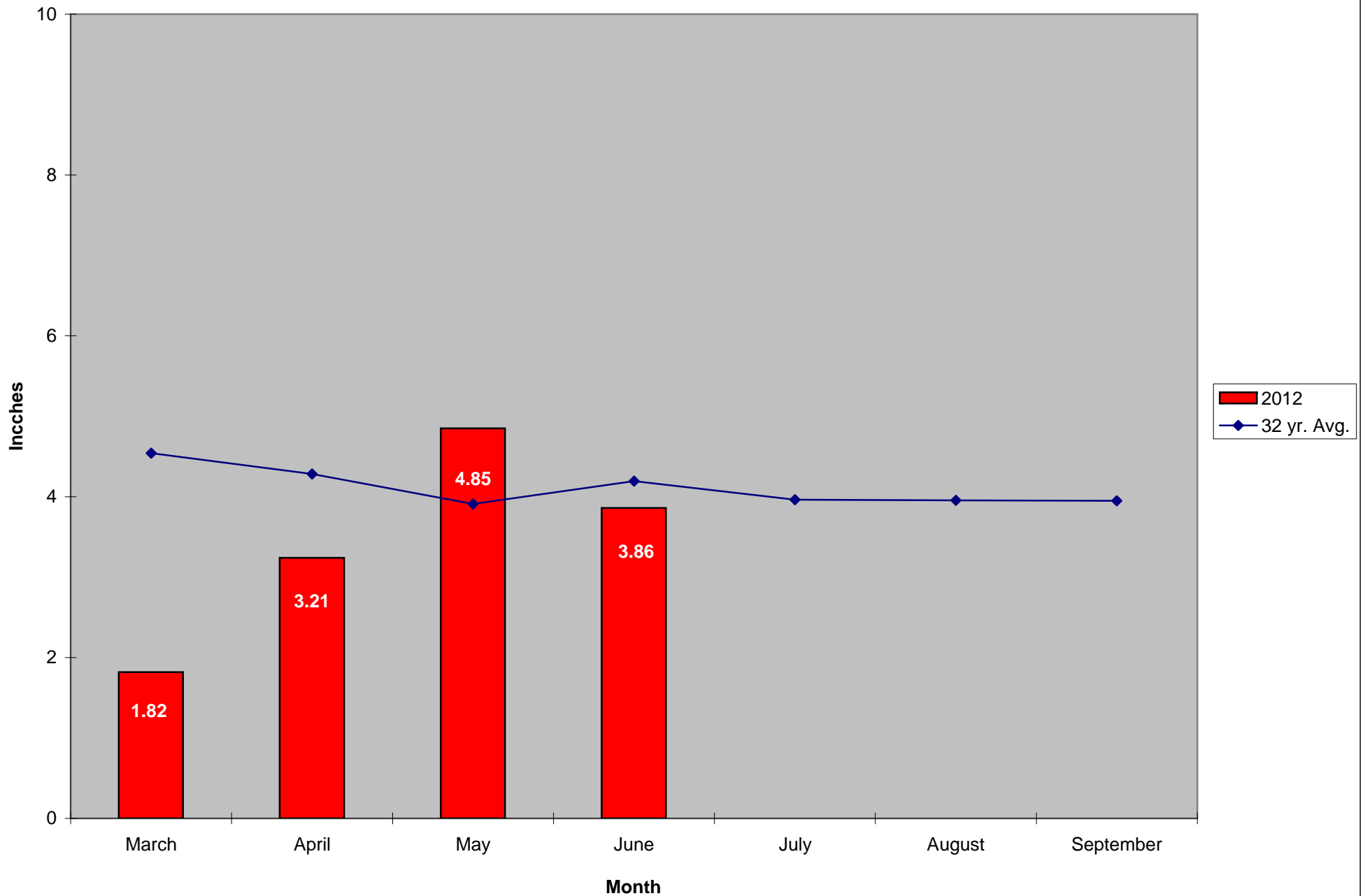
Weather Summary (Northborough, MA): The weather for this particular week averaged 73.06°F with a recorded high temperature of 88.9°F and a recorded low temperature of only 58.0°F. For this week there was also a total of 1.63 inches of rain observed. Compared to the previous week, it was approximately 2.77°F cooler on average, and rained about 1.28 inches less. There has been 2.25 inches of rain accumulated in July, while the total rainfall for the month of June was 2.98 inches at the CMMCP weather station (3.86 statewide). For the year we have received 23% more requests than average; 8,048 requests to date compared to the 9 year average of 6,547. Requests were 26% less than the 2011 totals for the same time frame, 10,187 in 2011 against 8,048 in 2012. Service requests increased 46% from EPI week 29 to Epi week 30 for 2012 (813 vs. 558).

CMMCP Mosquito Summary-

Target Species	Δ From Last Week	Δ From Last Year	Predominant Trap Site(s)
<i>Aedes vexans</i>	-100.0%	-100.0%	N/A
<i>Coquillettidia perturbans</i>	-16.12%	-1.120%	Sturbridge, Lunenburg
<i>Culiseta melanura</i>	+51.72%	-66.41%	Tewksbury, Sturbridge
<i>Ochlerotatus canadensis</i>	-75.00%	-87.50%	Blackstone
<i>Culex</i> Species	-21.01%	+46.45%	Auburn, Shrewsbury
All Species	-19.18%	+12.51%	Auburn, Sturbridge

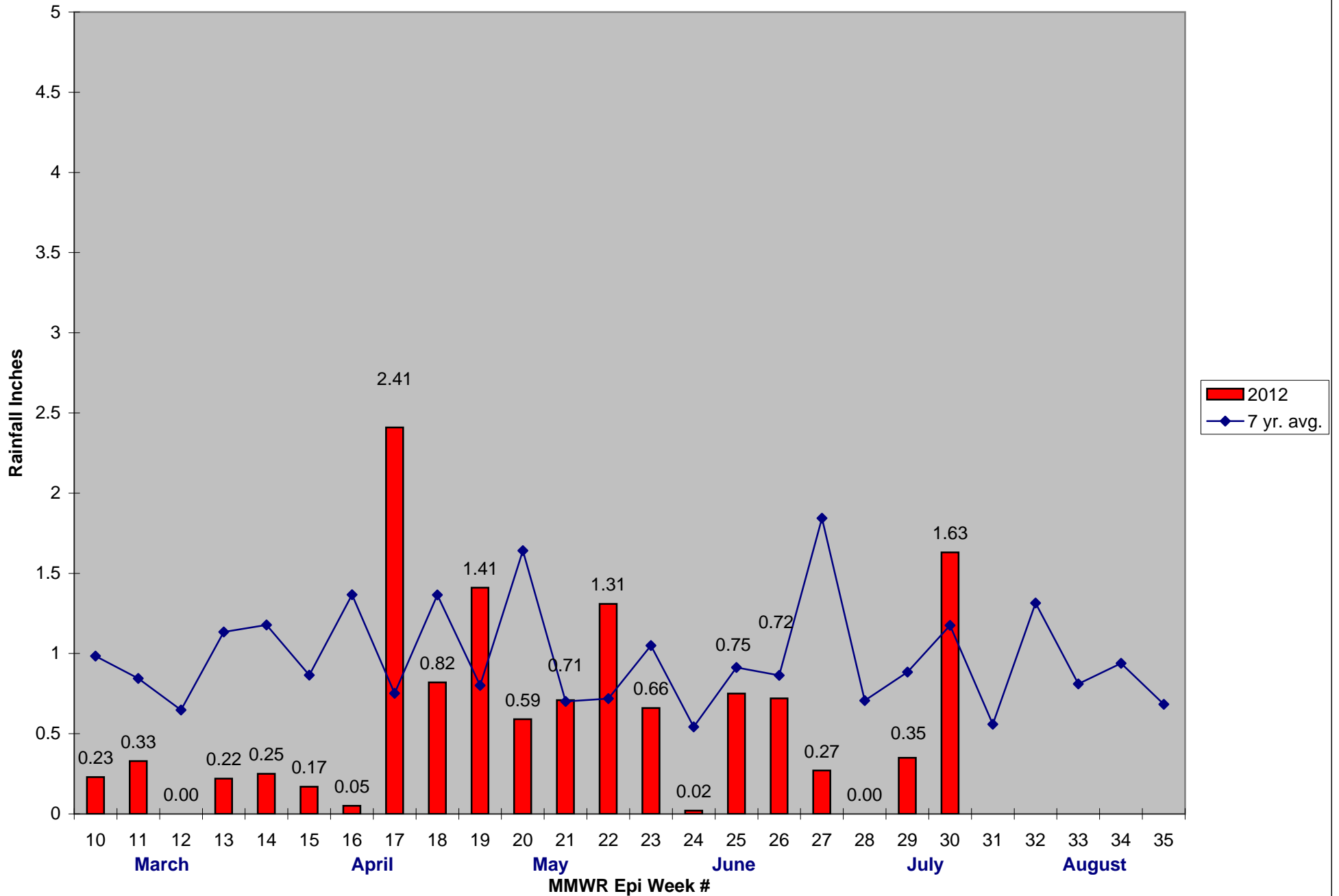
The predominant mosquito for the week was *Culex* Species,
followed by *Coquillettidia perturbans*.

2012 Mass. Rainfall Data vs. 32 Year Average*



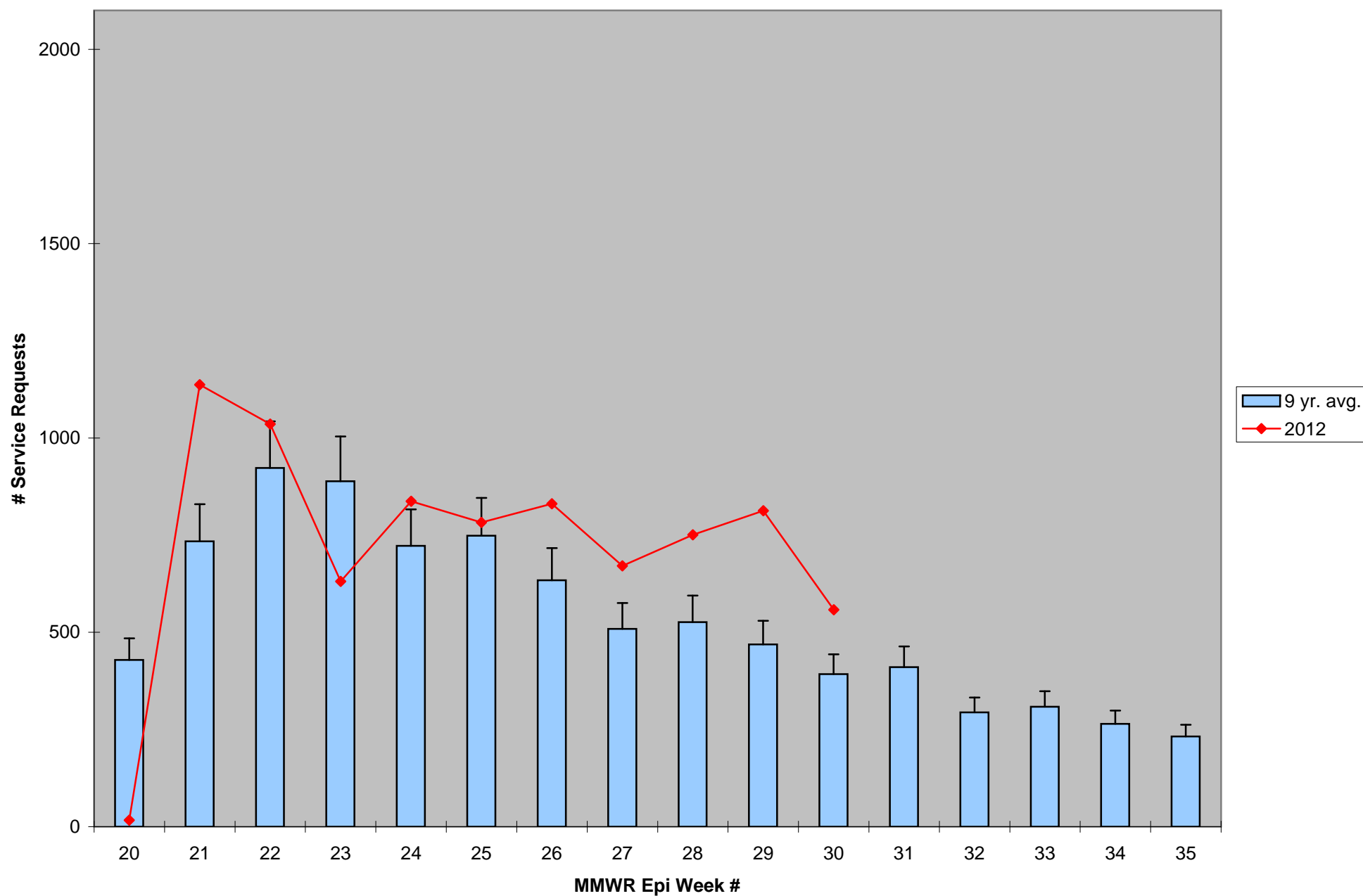
*Source: Northeast Regional Climate Center: http://www.nrcc.cornell.edu/page_summaries.html

2012 CMMCP Weekly Rainfall vs. 7 Year Average*



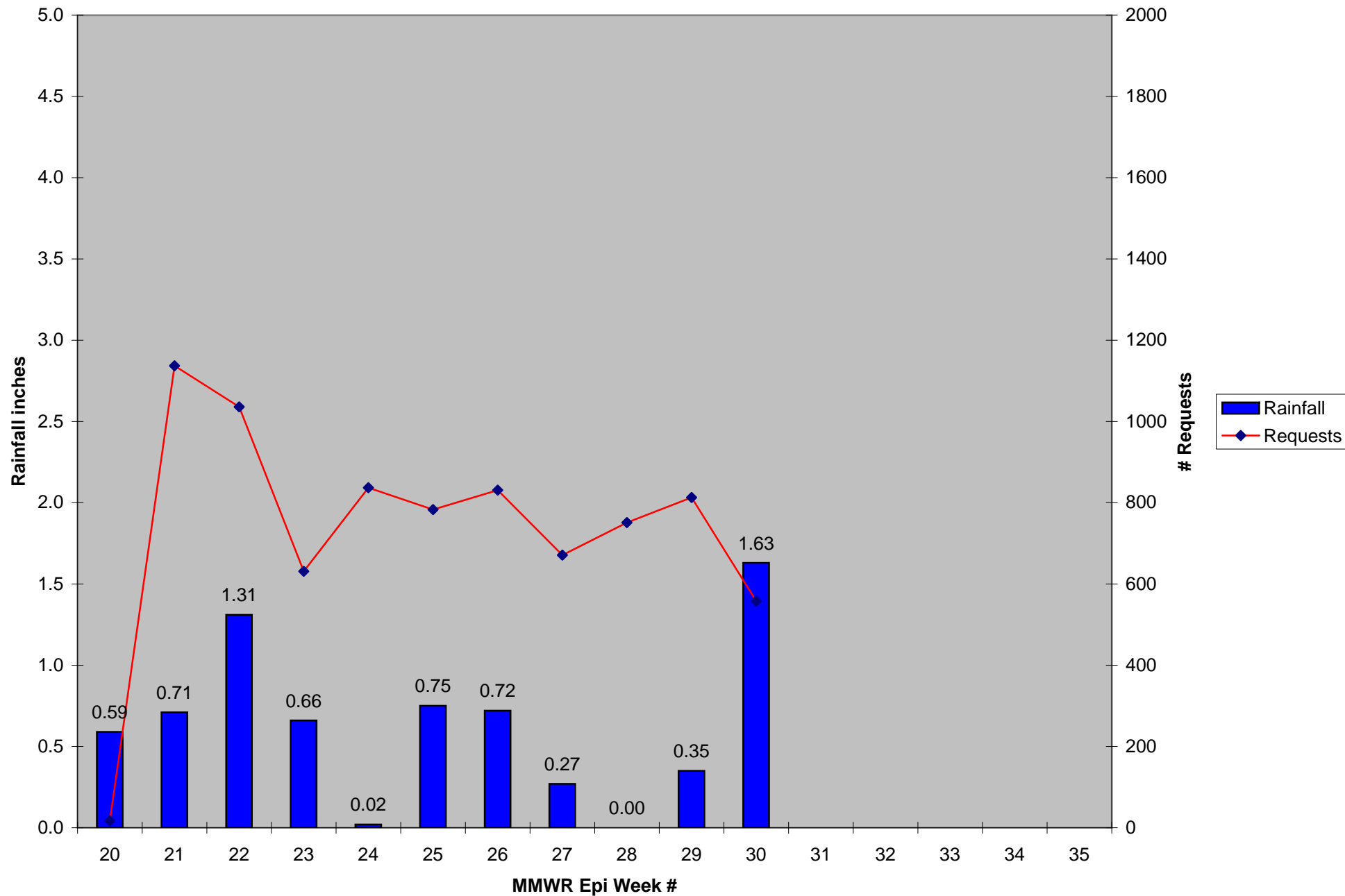
*Source: CMMCP Weather Station - Northborough, MA

ULV Service Request History Comparison 2003-2012



Error bars show approx. number of requests if we had 40 cities and towns over the 9 year average

2012 Rainfall vs. Requests



2012 Temp vs. Requests

