

# CMMCP WEEKLY SURVEILLANCE REPORT



**EPI week #30**  
**July 21 - 27, 2013**

**Frank Cornine**, *Field Biologist*  
**Curtis Best**, *Staff Entomologist*  
**Juliana Miller**, *Entomologist*  
**Tim McGlinchy**, *Director of Operations*  
**Tim Deschamps**, *Executive Director*

**Central Mass. Mosquito Control Project**  
**Weekly Report- 7/21/13-7/27/13**  
**EPI Week #30**

**Cumulative Surveillance Summary**

<b>Target Species</b>	<b><i>Ae. vex</i></b>	<b><i>Cq. per</i></b>	<b><i>Cs. mel</i></b>	<b><i>Oc. can</i></b>	<b><i>Culex</i></b>	<b>All Species</b>
<b>No. Pools</b>	62	147	114	80	392	1410
<b>Total Specimens</b>	714	7396	851	835	4709	16474
<b>No. Pools WNV +</b>	0	0	0	0	0	0
<b>No. Pools EEE +</b>	0	0	0	0	0	0

**Weather Summary (Northborough, MA):** The weather for this particular week averaged 70.40°F with a recorded high temperature of 86.80°F and a recorded low temperature of only 58.40°F. For this week there was also a total of 2.47 inches of rain observed. Compared to the previous week, it was approximately 12.31°F cooler on average, and rained about 2.39 inches more. There has been 2.84 inches of rain accumulated in July, while the total rainfall for the month of June was 8.49 inches. For the year we have received 41% more requests than average; 9,432 requests to date compared to the 10 year average of 6,697. Requests were 17.2% more than the 2012 totals for the same time frame, 8,048 in 2012 against 9,432 in 2013. Service requests dropped 78% from EPI week 29 to Epi week 30 in 2013 (1,157 vs. 647).

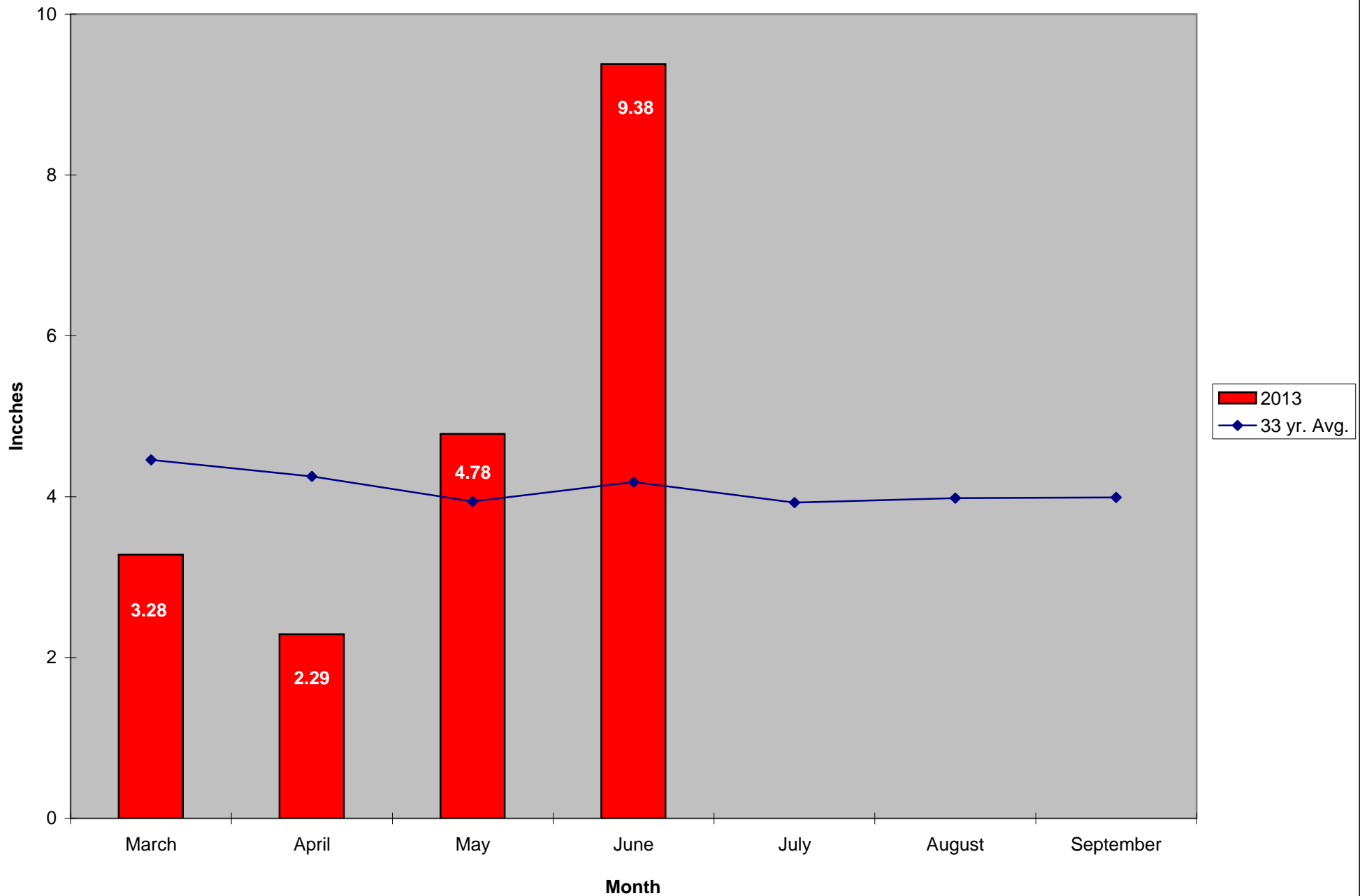
**CMMCP Mosquito Summary\*-**

<b>Target Species</b>	<b>Δ From Last Week</b>	<b>Δ From Last Year</b>	<b>Predominant Trap Site(s)</b>
-----------------------	-------------------------	-------------------------	---------------------------------

<i>Aedes vexans</i>	-71.43%	+200.0%	Webster, Holliston
<i>Coquillettidia perturbans</i>	-22.81%	+300.7%	Leominster, Holliston
<i>Culiseta melanura</i>	-10.00%	-57.14%	Lunenburg
<i>Ochlerotatus canadensis</i>	-64.29%	+900.0%	Blackstone
<i>Culex</i> Species	+114.9%	-27.27%	Lunenburg, Ayer
All Species	-11.65%	+108.4%	Leominster, Holliston

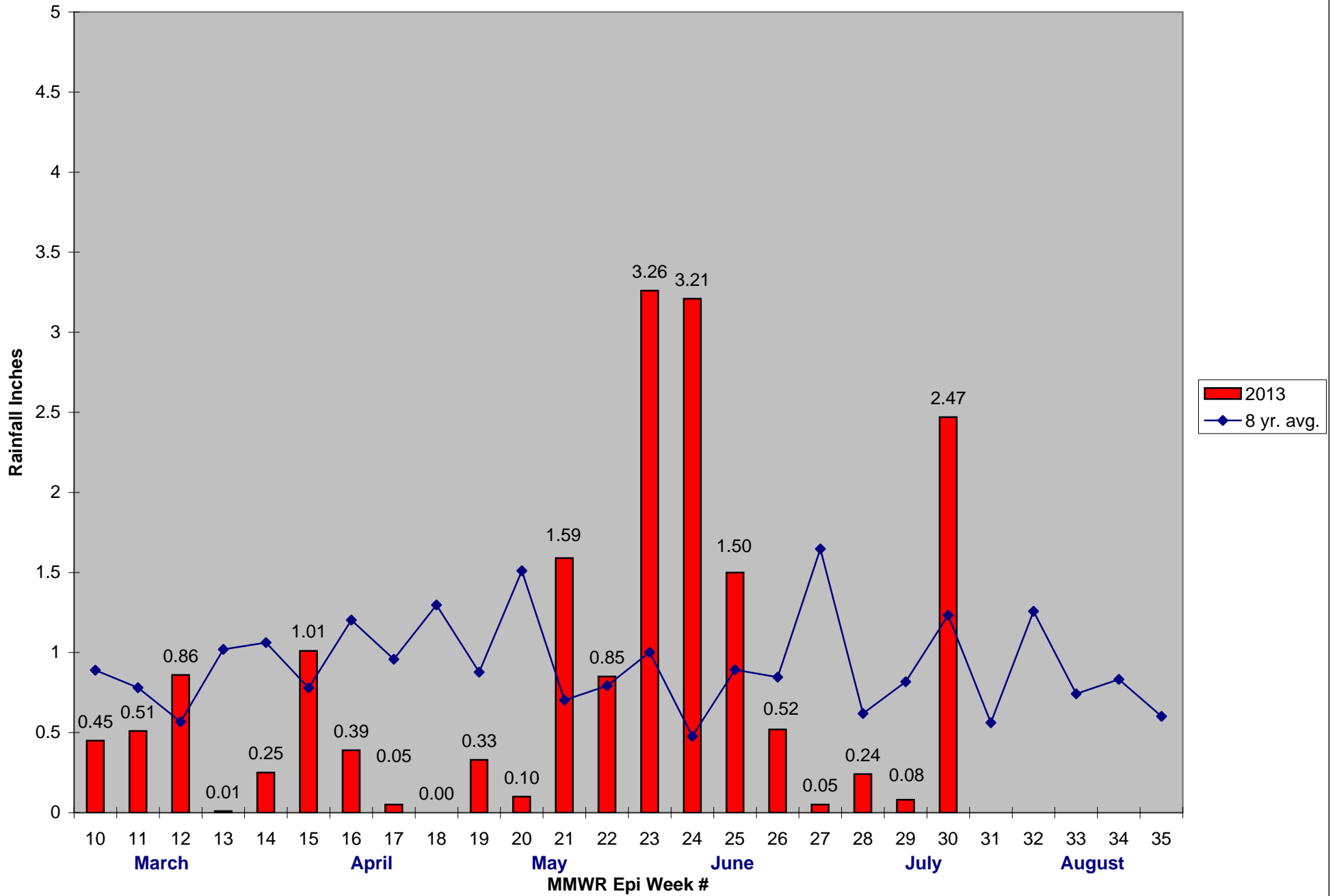
The predominant mosquito for the week was *Culex* Species,  
followed by *Coquillettidia perturbans*.

### 2013 Mass. Rainfall Data vs. 33 Year Average\*



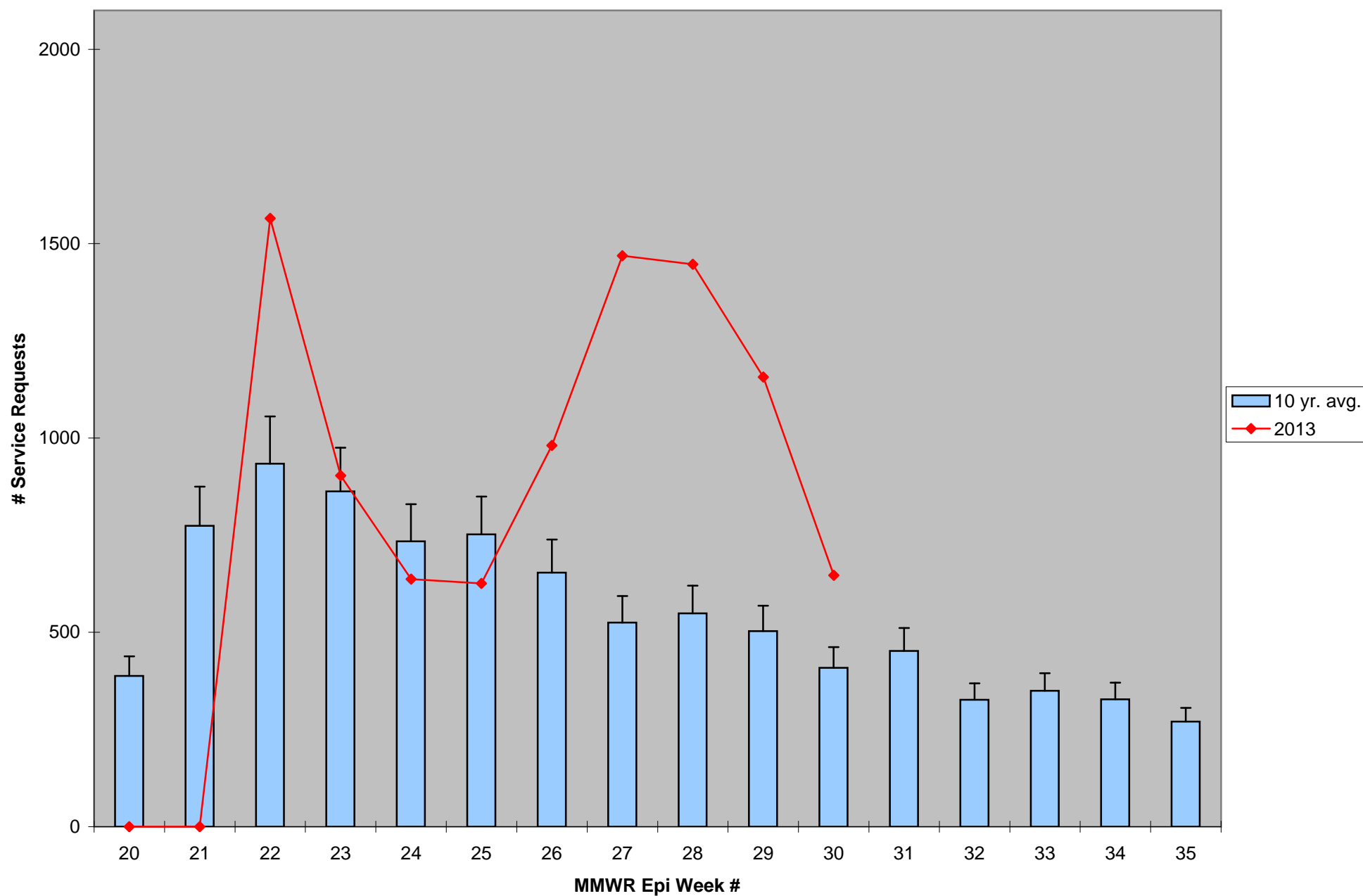
\*Source: Northeast Regional Climate Center: [http://www.nrcc.cornell.edu/page\\_summaries.html](http://www.nrcc.cornell.edu/page_summaries.html)

2013 CMMCP Weekly Rainfall vs. 8 Year Average\*



\*Source: CMMCP Weather Station - Northborough, MA

## ULV Service Request History Comparison 2003-2013



Error bars show approx. number of requests if we had 40 cities and towns over the 10 year average

2013 Rainfall vs. Requests

