

# CMMCP WEEKLY SURVEILLANCE REPORT



**EPI week #31**  
**July 31 – Aug. 6, 2011**

**Frank Cornine, *Field Biologist***  
**Curtis Best, *Staff Entomologist***  
**Tim McGlinchy, *Director of Operations***  
**Tim Deschamps, *Executive Director***

**Central Mass. Mosquito Control Project**  
**Weekly Report- 7/31/11-8/6/11**  
**EPI Week #31**

**Cumulative Surveillance Summary**

Target Species	<i>Ae. vex</i>	<i>Cq. per</i>	<i>Cs. mel</i>	<i>Oc. can</i>	<i>Culex</i>	All Species
<b>No. Pools</b>	13	165	83	52	607	1464
<b>Total Specimens</b>	24	5905	534	330	17541	26540
<b>No. Pools WNV +</b>	0	0	0	0	2	2
<b>No. Pools EEE +</b>	0	0	0	0	0	0

Pool of WNV+ *Culex* Species collected in Sturbridge on 7/22/11

Pool of WNV+ *Culex* Species collected in Acton on 7/28/11

**Weather Summary (Northborough, MA):** The weather for this particular week averaged 73.29°F with a recorded high temperature of 91.3°F and a recorded low temperature of only 57.8°F. For this week there was also a total of 0.55 inches of rain observed. Compared to the previous week, it was approximately 1.32°F warmer on average, and rained about 0.07 inches less. There has been 0.55 inches of rain accumulated in August, while the total rainfall for the month of July was 1.73 inches. For the year we have received 57% more requests than average; 10,931 requests to date compared to the 8 year average of 6,951. Requests were 23% more than the 2010 totals, 10,931 in 2011 against 8,840 in 2010. Service requests **increased 30%** from EPI week 30 to Epi week 31 for 2011 (647 vs. 489) due to increased service calls in the WNV towns of Sturbridge & Acton..

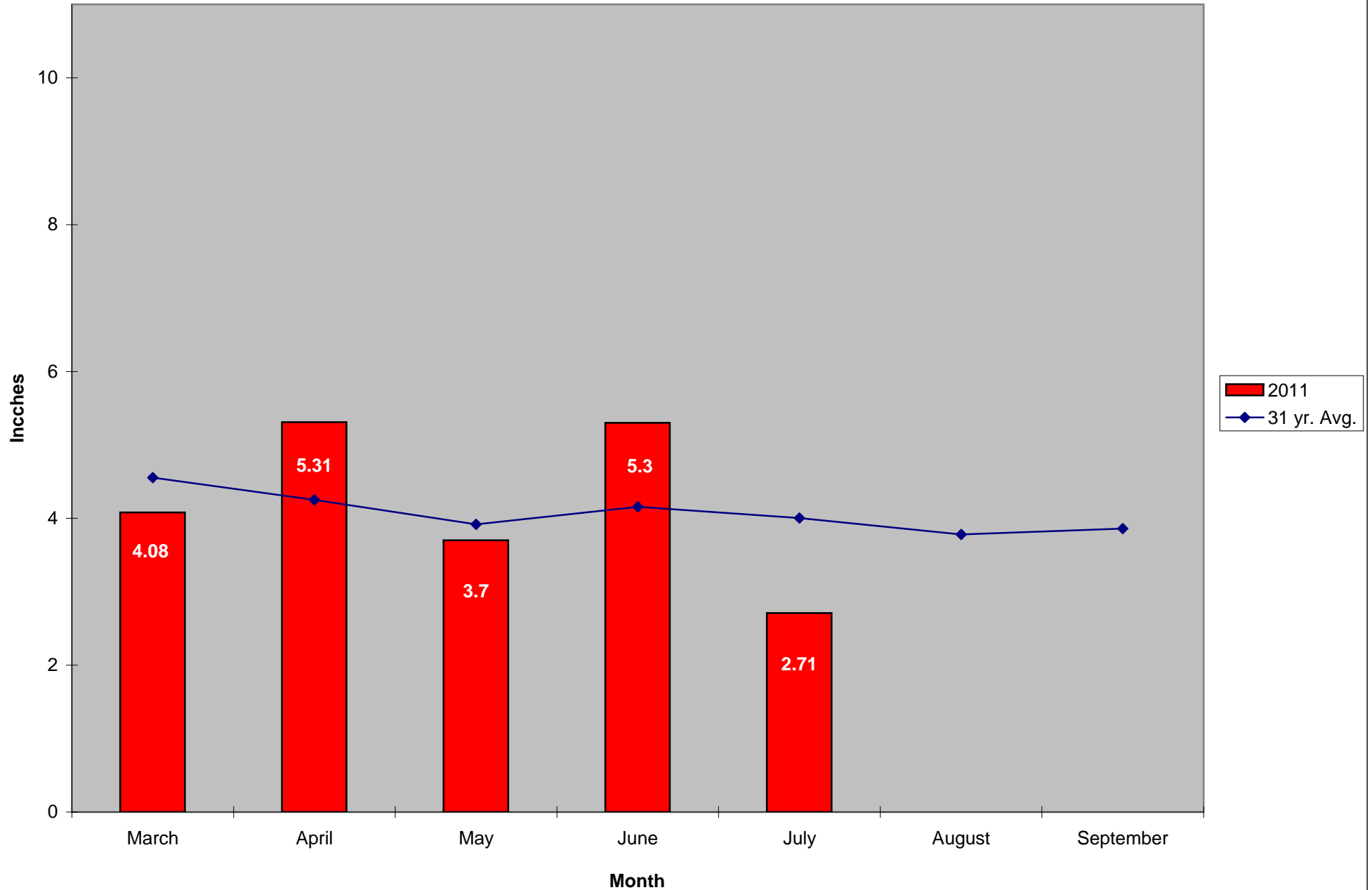
**CMMCP Mosquito Summary-**

Target Species	Δ From Last Week	Δ From Last Year*	Predominant Trap Site(s)
<i>Aedes vexans</i>	+00.00%	+00.00%	Westborough
<i>Coquillettidia perturbans</i>	-42.48%	+210.7%	Shrewsbury, Westborough
<i>Culiseta melanura</i>	-65.65%	+1025%	Westborough
<i>Ochlerotatus canadensis</i>	-62.50%	+300.0%	Natick, Sherborn
<i>Culex</i> Species	-11.87%	+96.61%	Hudson, Southborough
All Species	-27.06%	+115.6%	Hudson, Westborough, Southborough

The predominant mosquito for the week was *Culex* spp.  
followed by *Coquillettidia perturbans*.

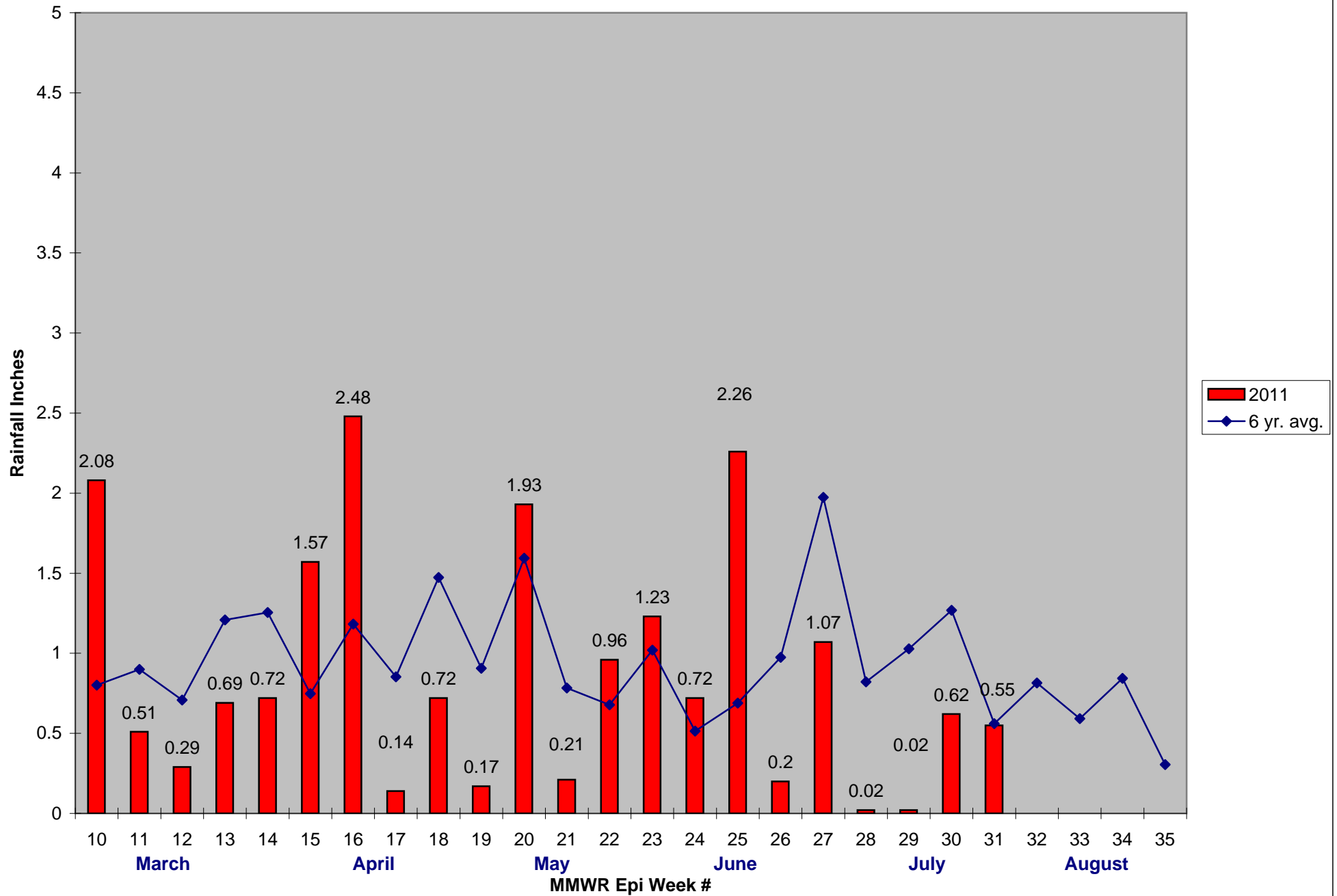
\*Low 2010 season numbers may contribute to these comparisons being not as significant as they appear

### 2011 Mass. Rainfall Data vs. 31 Year Average\*



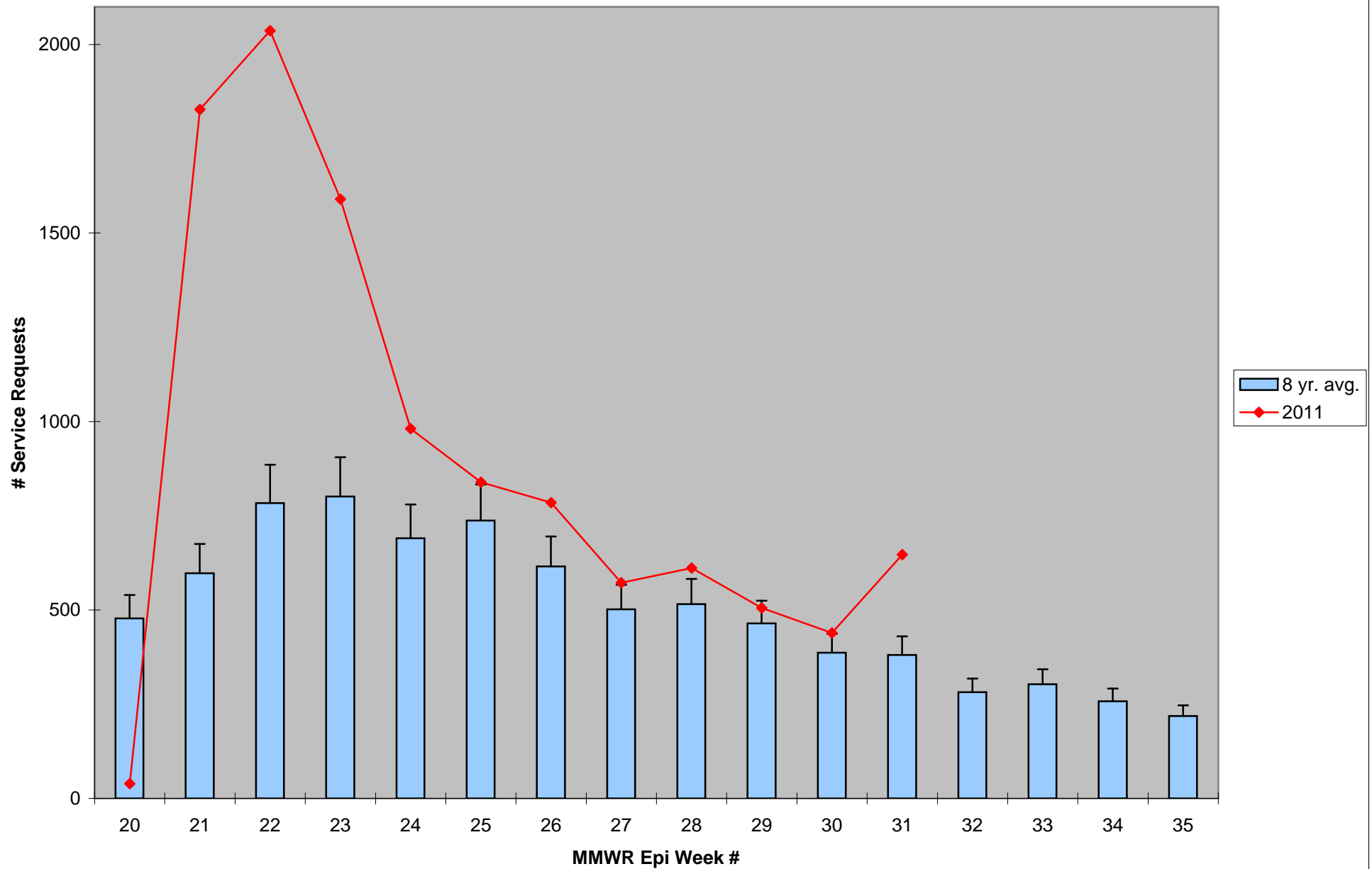
\*Source: Northeast Regional Climate Center: [http://www.nrcc.cornell.edu/page\\_summaries.html](http://www.nrcc.cornell.edu/page_summaries.html)

2011 CMMCP Weekly Rainfall vs. 6 Year Average\*



\*Source: CMMCP Weather Station - Northborough, MA

### ULV Service Request History Comparison 2003-2011



Error bars show approx. number of requests if we had 39 cities and towns over the 8 year average

2011 Rainfall vs. Requests

