

CMMCP WEEKLY SURVEILLANCE REPORT



EPI week #31
July 28 – Aug. 3, 2013

Frank Cornine, *Field Biologist*
Curtis Best, *Staff Entomologist*
Juliana Miller, *Entomologist*
Tim McGlinchy, *Director of Operations*
Tim Deschamps, *Executive Director*

Central Mass. Mosquito Control Project
Weekly Report- 7/28/13-8/3/13
EPI Week #31

Cumulative Surveillance Summary

Target Species	<i>Ae. vex</i>	<i>Cq. per</i>	<i>Cs. mel</i>	<i>Oc. can</i>	<i>Culex</i>	All Species
No. Pools	69	166	129	90	455	1600
Total Specimens	769	7985	907	929	5423	18174
No. Pools WNV +	0	0	0	0	0	0
No. Pools EEE +	0	0	0	0	0	0

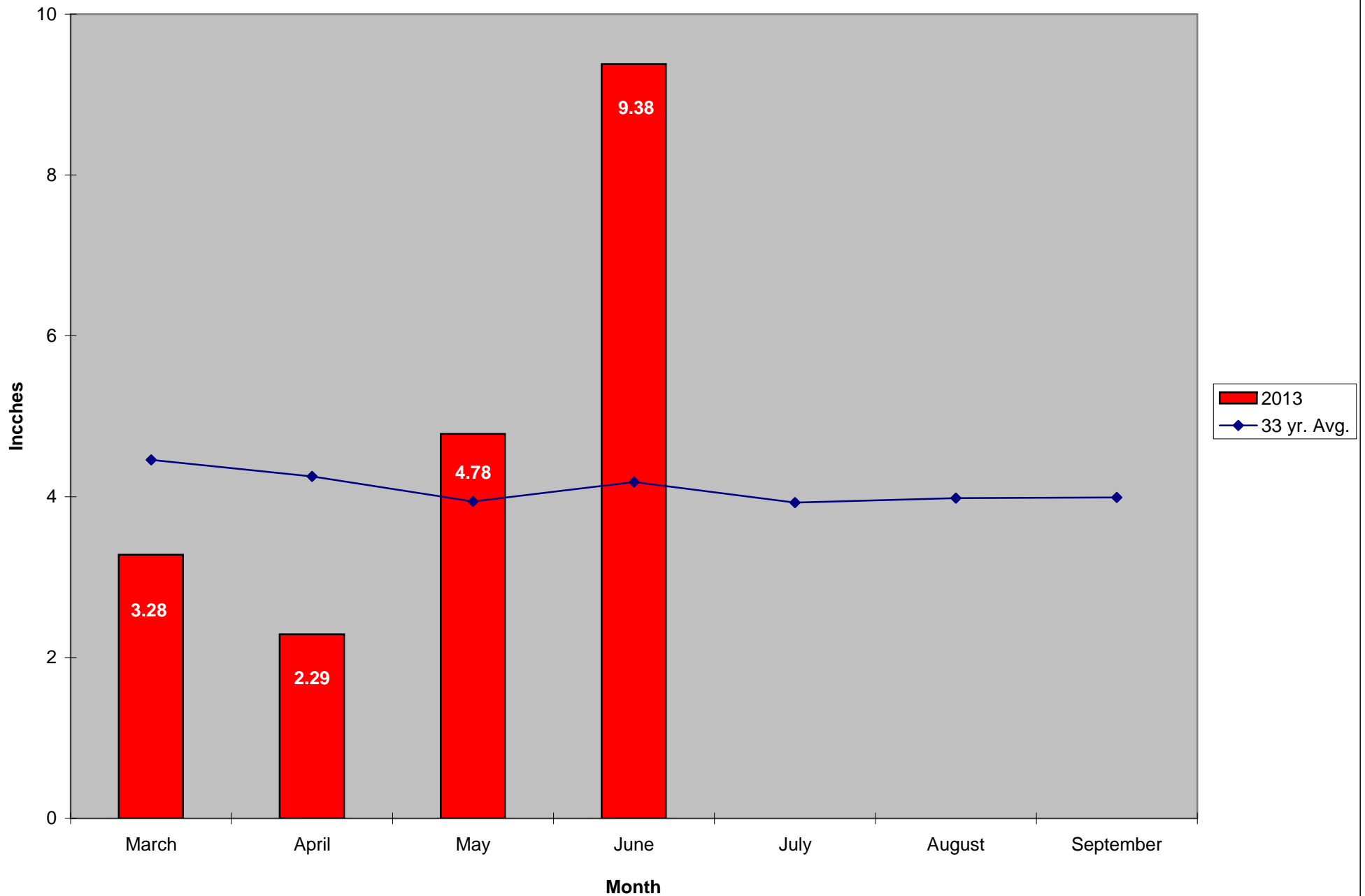
Weather Summary (Northborough, MA): The weather for this particular week averaged 71.57°F with a recorded high temperature of 86.10°F and a recorded low temperature of only 59.00°F. For this week there was also a total of 0.54 inches of rain observed. Compared to the previous week, it was approximately 1.17°F warmer on average, and rained about 1.93 inches less. There has been 0.53 inches of rain accumulated in August, while the total rainfall for the month of July was 2.85 inches. For the year we have received 42% more requests than average; 10,164 requests to date compared to the 10 year average of 7,149. Requests were 14.4% more than the 2012 totals for the same time frame, 8,878 in 2012 against 10,164 in 2013. Service requests increased 13% from EPI week 30 to Epi week 31 in 2013 (647 vs. 732).

CMMCP Mosquito Summary*-

Target Species	Δ From Last Week	Δ From Last Year	Predominant Trap Site(s)
<i>Aedes vexans</i>	+00.00%	+200.0%	Marlborough
<i>Coquillettidia perturbans</i>	-53.81%	+07.41%	Marlborough, Westborough
<i>Culiseta melanura</i>	+66.67%	+25.00%	Westborough
<i>Ochlerotatus canadensis</i>	+110.0%	+425.0%	Westborough, Marlborough
<i>Culex</i> Species	-79.86%	-78.36%	Tewksbury
All Species	-54.33%	-14.42%	Marlborough, Westborough

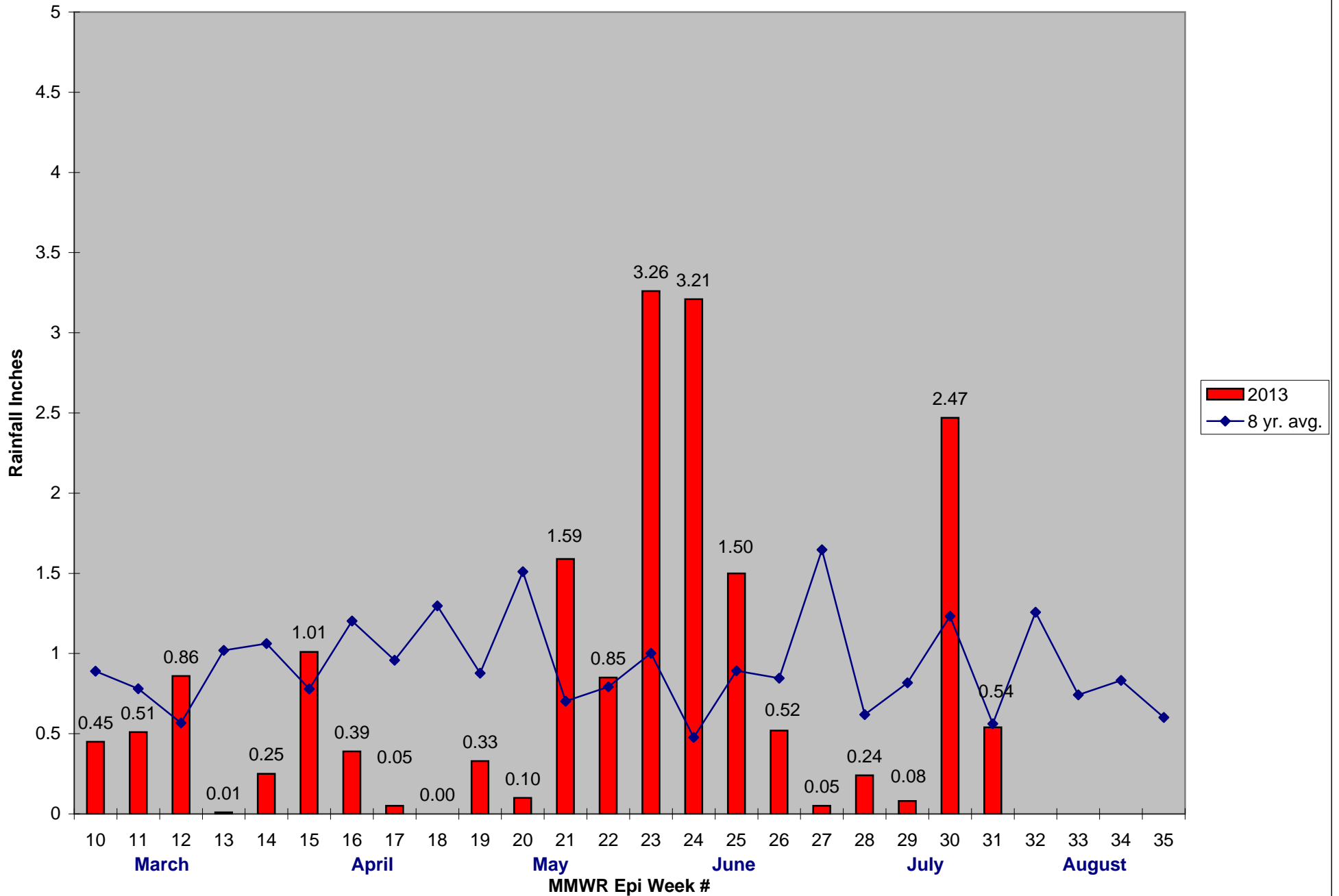
The predominant mosquito for the week was *Coquillettidia perturbans*, followed by *Culex* Species.

2013 Mass. Rainfall Data vs. 33 Year Average*



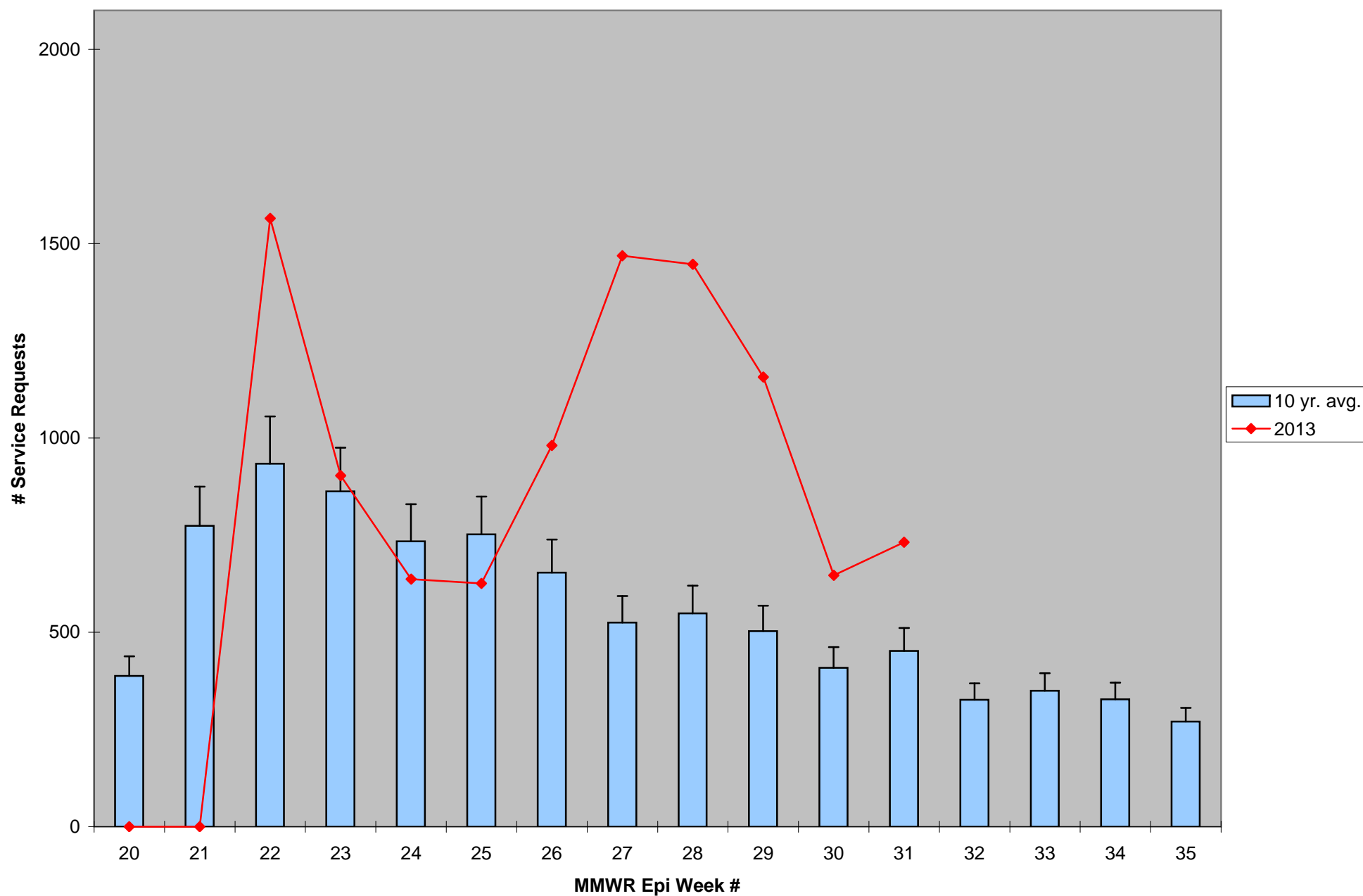
*Source: Northeast Regional Climate Center: http://www.nrcc.cornell.edu/page_summaries.html

2013 CMMCP Weekly Rainfall vs. 8 Year Average*



*Source: CMMCP Weather Station - Northborough, MA

ULV Service Request History Comparison 2003-2013



Error bars show approx. number of requests if we had 40 cities and towns over the 10 year average

2013 Rainfall vs. Requests

